

ISSN 0022-3727

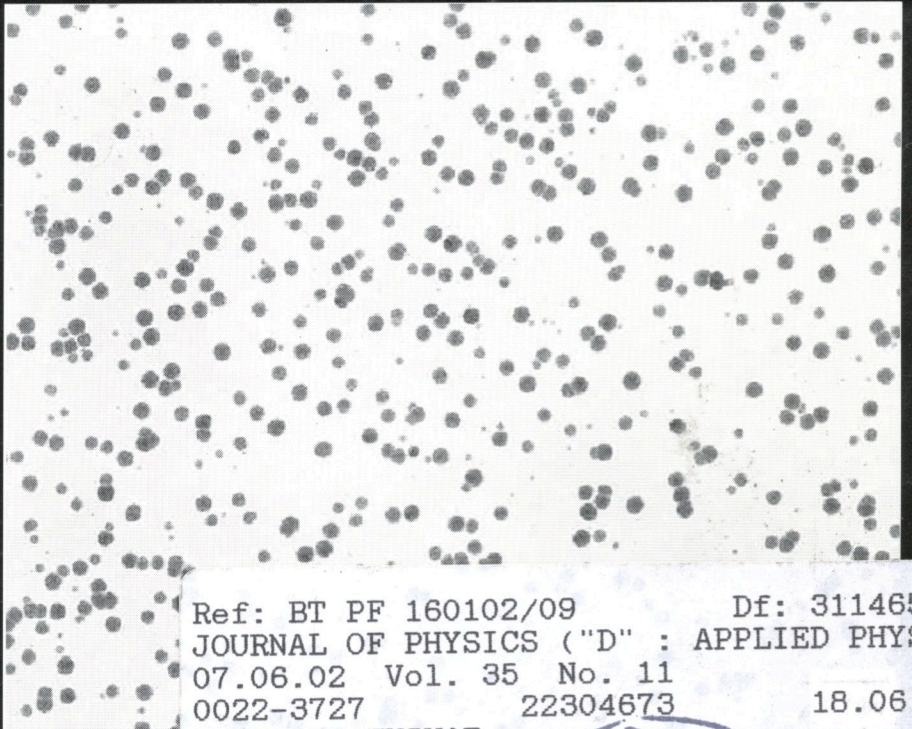
IOP

Journal of Physics D

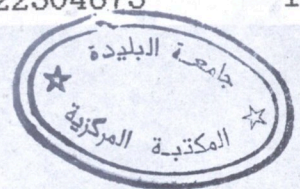
Applied Physics

Volume 35 Number 11 7 June 2002

Online: www.iop.org/journals/jphysd



Ref: BT PF 160102/09 Df: 31146538
JOURNAL OF PHYSICS ("D" : APPLIED PHYSIC
07.06.02 Vol. 35 No. 11
0022-3727 22304673 18.06.02
EDITIONS CHIHAB
ZI. LOT B5
B.P.744 REGHAIA
GG ALGER
ALGERIE



Institute of Physics PUBLISHING

Journal of Physics D: Applied Physics

Volume 35

Number 11

7 June 2002

RAPID COMMUNICATIONS

- L37** Fine structures of photoluminescence spectra of TiO_2 thin films with the addition of ZnFe_2O_4
Yunxia Jin, Guanghai Li, Yong Zhang, Yunxia Zhang and Lide Zhang
- L41** RAS—a new process control tool in liquid crystal device fabrication
B F Macdonald, W Zheng, R J Cole and I Underwood
- L44** Electronic structure of carbon-free silicon oxynitride films grown using an organic precursor hexamethyl-disilazane
A Chainani, S K Nema, P Kikani and P I John
- L48** Epitaxial growth of $\text{La}_{1/3}\text{Sr}_{2/3}\text{FeO}_3$ thin films by laser ablation
W Prellier and B Mercey

PAPERS

APPLIED MAGNETISM, MAGNETIC MATERIALS AND SUPERCONDUCTIVITY

- 1095** Temperature dependence of saturation magnetostriction measured for $\text{Fe}_{81}\text{Si}_{3.5}\text{B}_{13.5}\text{C}_2$ amorphous films by a bending method based on the Villari effect
B Kundys, Yu Bukhantsev, H Szymczak, M R J Gibbs and R Zuberek

PHOTONICS AND SEMICONDUCTOR DEVICE PHYSICS

- 1099** Blue emission from light-emitting diodes based on lithium complex
Zhijian Chen, Junsheng Yu and Kenji Ogino Seizo Miyata
- 1103** Failure of polymeric light emitting diodes by controlled exposure of the polymer–cathode interface to oxygen
G G Andersson, M P de Jong, G J J Winands, A W Denier van der Gon, L J van IJzendoorn, H H Brongersma and M J A de Voigt

EXPERIMENTAL, COMPUTATIONAL AND THEORETICAL PARTICLE BEAM AND PLASMA SCIENCE

- 1109** Influence of N–O chemistry on the radiative emission from a direct current nitrogen plasma jet
R Oikari, V Häyrynen and R Hernberg
- 1117** Efficiency of 1.5–4.5 keV x-ray production from 2 ps duration KrF laser pulses incident onto solid targets
S J Pestehe, G J Tallents, I C E Turcu, Y Abou Ali, G Hirst, M Powers and W Shaikh
- 1123** Modelling the effect of ferrite on an inductively coupled plasma torch: I. Infinite ferrite permeability
S Xue, P Proulx and M I Boulos
- 1131** Modelling the effect of ferrite on an inductively coupled plasma torch: II. Finite ferrite permeability
S Xue, P Proulx and M I Boulos
- 1141** Balancing incident heat and ion flow for process optimization in plasma based ion implantation
S Mändl, D Manova and B Rauschenbach
- 1149** Analysis of phase-resolved partial discharge patterns of voids based on a stochastic process approach
R Altenburger, C Heitz and J Timmer
- 1164** Interpretation of capillary discharge EUV pinhole images using a ray-tracing code
F Girard, J G Lunney, J Larour and R Dussart
- 1171** Efficiency of ozone production by pulsed positive corona discharge in synthetic air
M Šimek and M Člupek

APPLIED SURFACES AND INTERFACES

- 1176** Room temperature diffusion of Cu in vanadium pentoxide thin films
A Irajizad, M M Ahadian and Z Vashaei

(Continued on inside back cover)