

ISSN 0022-3727

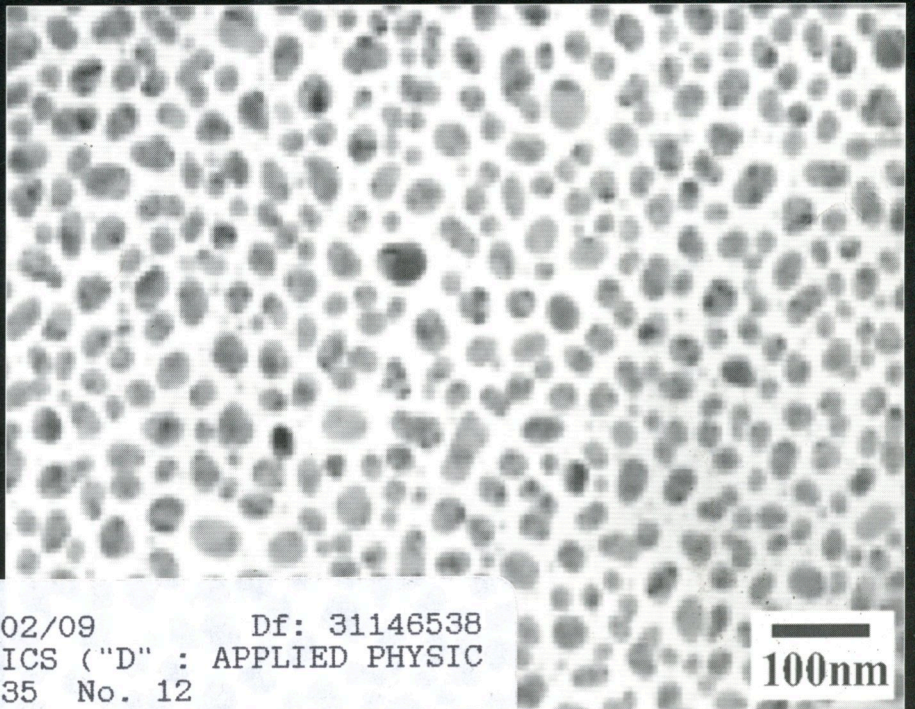
IOP

Journal of Physics D

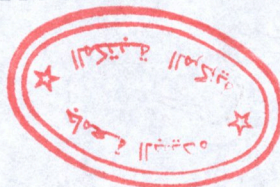
Applied Physics

Volume 35 Number 12 21 June 2002

Online: www.iop.org/journals/jphysd



Ref: BT PF 160102/09 Df: 31146538
JOURNAL OF PHYSICS ("D" : APPLIED PHYSIC
21.06.02 Vol. 35 No. 12
0022-3727 22304673 01.07.02
EDITIONS CHIHAB
ZI. LOT B5
B.P.744 REGHAIA
GG ALGER
ALGERIE



Institute of **Physics** PUBLISHING

Journal of Physics D: Applied Physics

Volume 35

Number 12

21 June 2002

RAPID COMMUNICATION

- L53 **Plasma generation in a gap around a sliding contact**
K Nakayama and R A Nevshupa

PAPERS

APPLIED MAGNETISM, MAGNETIC MATERIALS AND SUPERCONDUCTIVITY

- 1291 **Magneto-transport study of vortex dynamics in heavy ion irradiated $\text{YBa}_2\text{Cu}_3\text{O}_{7-\delta}$ polycrystalline films**
G L Bhalla, U Divakar and A Malik
- 1296 **Interaction effects on the anisotropy field in sputtered Co–Cr–Ta thin films and metal particle tapes**
M Vopsaroiu and P R Bissell
- 1301 **Film orientation effects on the structural, magnetic and transport properties of LaMnO_y thin films**
J H Zhang, X G Li and N B Ming
- 1305 **Determination of the radius of nano-particles in a magnetic fluid by means of a constant frequency measurement technique**
P C Fannin, B K P Scaife, A T Giannitsis and S W Charles

- 1311 **Theory of ‘crotchet’ impulse component generation**
A V Moldavanov

PHOTONICS AND SEMICONDUCTOR DEVICE PHYSICS

- 1319 **Ionization yield and isotopic selectivity of three-step photoionization of atoms by pulsed lasers**
G P Gupta and B M Suri
- 1326 **Investigation on transient relaxation in Ag–BaO composite thin film with pump supercontinuum-probe technique**
Qifeng Zhang, Danling Wang, Qihuang Gong and Jinlei Wu.
- 1330 **Thermoluminescence characteristics of $\text{K}_2\text{Ca}_2(\text{SO}_4)_3$ doped with rare earths Eu and Dy**
A Pandey, V K Sharma, D Mohan, R K Kale and P D Sahare
- 1334 **Blue organic light-emitting diode as the electro-optical conversion device for high-speed switching applications**
H Kajii, T Tsukagawa, T Taneda and Y Ohmori

EXPERIMENTAL, COMPUTATIONAL AND THEORETICAL PARTICLE BEAM AND PLASMA SCIENCE

- 1338 **Spectroscopic validation of the supersonic plasma jet model**
S E Selezneva, V Sember, D V Gravelle and M I Boulos
- 1350 **Spectroscopic study of a supersonic plasma jet generated by an ICP torch with a convergent–divergent nozzle**
V Sember, D V Gravelle and M I Boulos
- 1362 **Stationary supersonic plasma expansion: continuum fluid mechanics versus direct simulation Monte Carlo method**
S E Selezneva, M I Boulos, M C M van de Sanden, R Engeln and D C Schram
- 1373 **Numerical study of a medium pressure point-to-plane discharge**
S Potamianou, N Spyrou and J-F Loiseau
- 1381 **Thomson scattering on a low-pressure, inductively-coupled gas discharge lamp**
M J van de Sande and J J A M van der Mullen

APPLIED SURFACES AND INTERFACES

- 1392 **On the dynamics of liquid metal ion sources**
G L R Mair, C J Aidinis, L Bischoff and Th Ganetsos

(Continued on inside back cover)