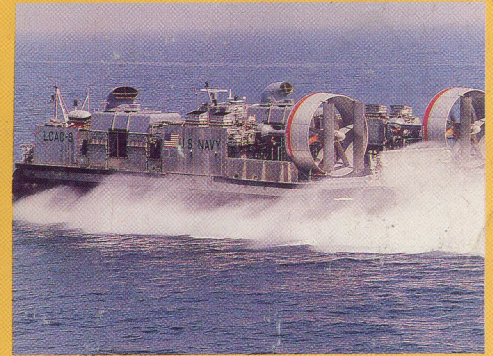
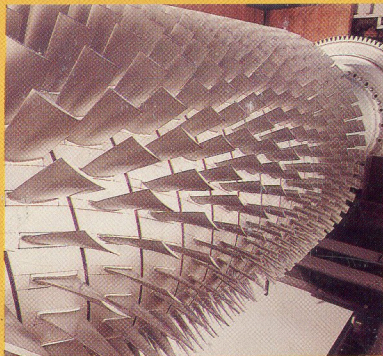
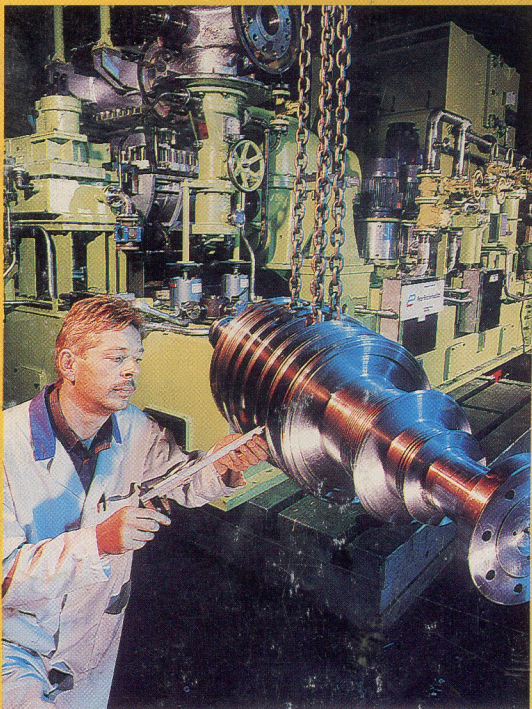
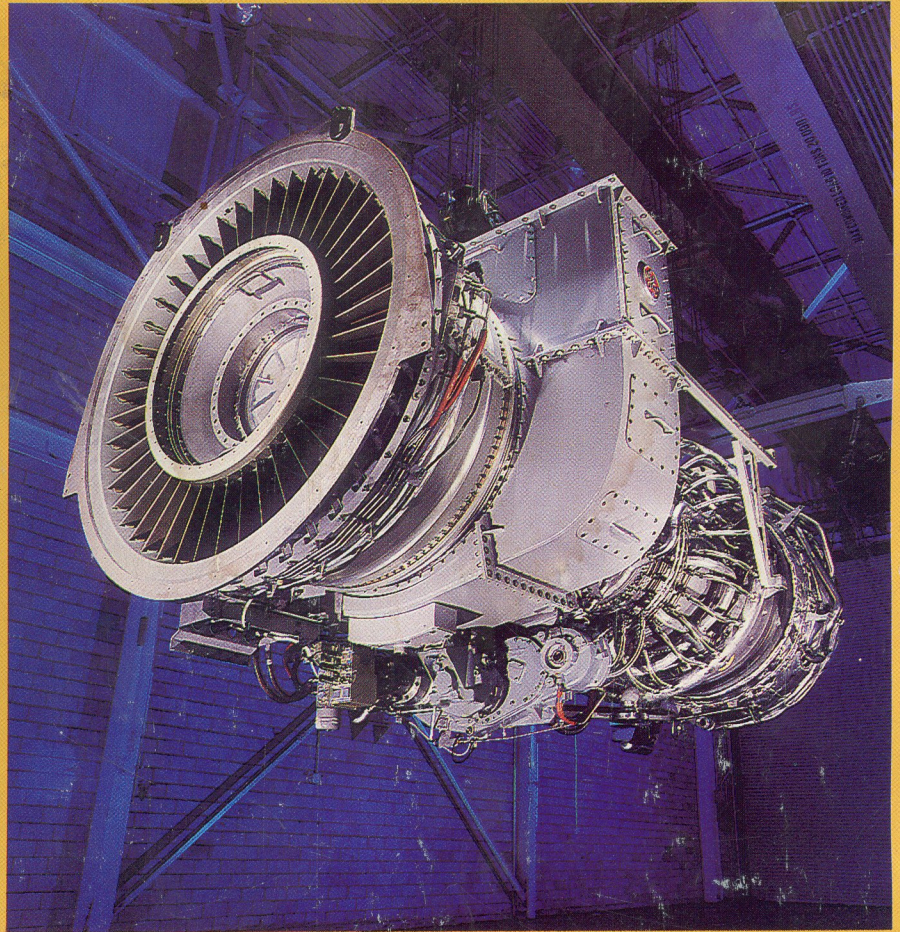


# Turbomachinery INTERNATIONAL HANDBOOK/1995



- Analysis of Turbomachinery Sales
- Market Forecast
- Focus on Independent Power Producers
- Marine Turbines

## Turbomachinery Publications

Established in 1959

### Founders

G. Renfrew Brighton  
R. Tom Sawyer

## Turbomachinery International

### Publisher

Skip Ruch, 114

### Editor

Thomas Barker, 115

### European Editor

Eric Jeffs

### Editorial Assistant

Becky Schaefer

### Handbook Listing Editors

Amanda West

Kathy Fera

### Contributing Editors

Walter R. May

William E. Forsthoffer

Diane Raflo

Robert S. Seeley

### Art Department Director

Hans Gschliesser, 146

### Assistant Art Director

Catherine Wakeman, 157

### President

James E. Jones

### Circulation Manager

Arthur Heilman, 136

### Director of Production

Frances Salamon, 109

### Production Manager

Peggy Eadie, 138

Telephone extensions are listed next to the names above

### Editorial Offices

50 Day Street, P.O. Box 5550

Norwalk, Connecticut, U.S.A. 06856-5550

Tel: (203) 853-6015

Fax: (203) 852-8175

Telex: 353706 BUSJOURNORWK

Cable: TURBOMACHI Norwalk, CT U.S.A.

### European Editor - Eric Jeffs

Tel: [44]1494-864-383 Fax: [44]1494-890-090

### Affiliated Research Firm

Forecast International

President: Ed Nebinger

Power Systems Analyst: David J. Franus

22 Commerce Road

Newtown, Connecticut, U.S.A. 06470

Tel: (203) 426-0800

Telex: 467615

### Subscription Rates

U.S.: 1 year \$49; 2 years \$75.

Canada: 1 year \$75 (Canadian);

2 years \$98 (Canadian).

Foreign (Sea Mail): 1 year \$60.

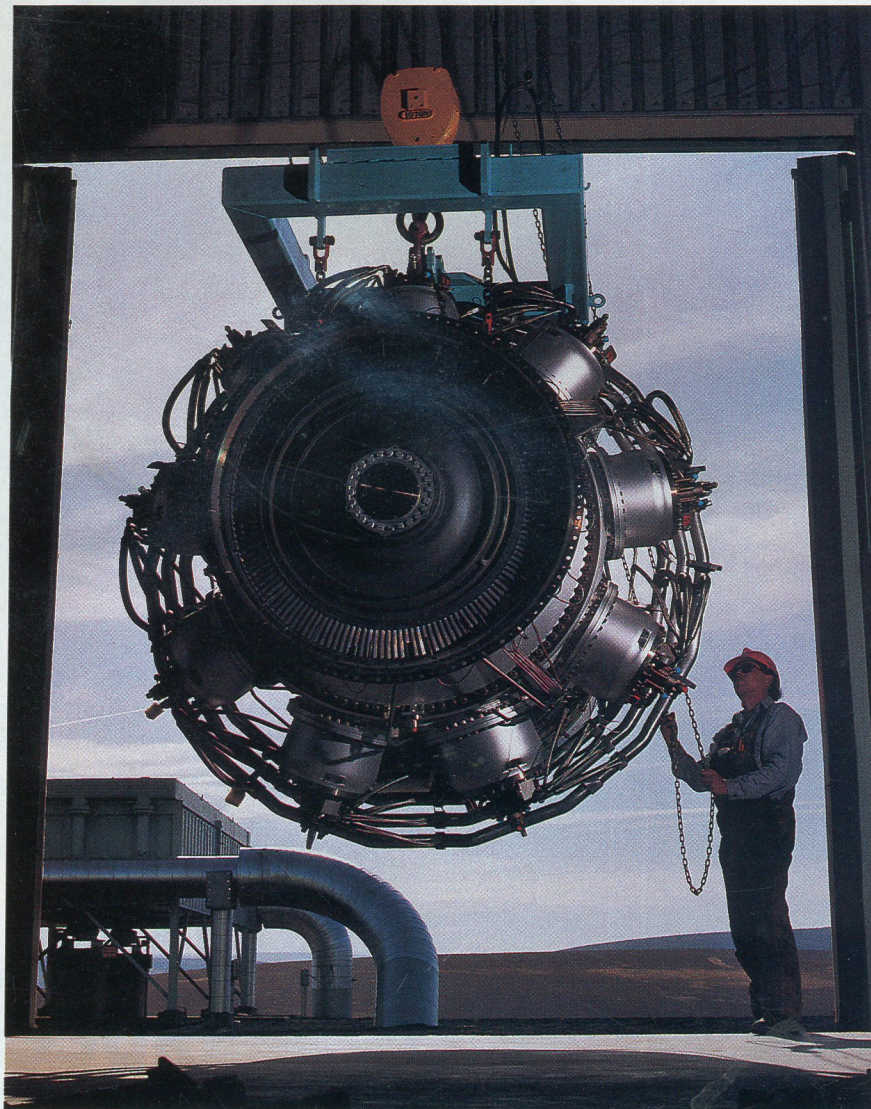
Foreign (Air Mail): 1 year \$100.

Claims for undelivered copies not honored after 30 days from publication (90 days for overseas).

# BPA

Turbomachinery International is published for key management and engineering personnel in turbomachinery-using industries. Our editorial content is aimed at keeping our readers informed of all important developments in the field. We provide concepts, technical details and business developments to enable our readers to share the experiences of others as to systems, approaches and equipment that have proven valuable, and to stimulate new approaches to energy conversion. Publisher makes no guarantees or recommendations concerning any process, procedure or device described herein. Turbomachinery International is published seven times a year (six magazine issues and one handbook) by Business Journals, Inc. Executive and Editorial offices, 50 Day Street, Norwalk, Connecticut, U.S.A. 06854. Volume 36, Number 5. Copyright 1995 by Business Journals, Inc. Second Class postage paid in Norwalk, Connecticut and at additional mailing offices. (USPS 871-500, ISSN 0149-4147). Turbomachinery International is available on microfilm from University Microfilms International, 300 North Zeeb Road, Ann Arbor, Michigan, U.S.A. 48106. Postmaster: Please send address changes to Circulation Manager, Turbomachinery International, P.O. Box 5550, Norwalk, CT 06856-5550 U.S.A.

# C O N T



## How to Use this Handbook ..... 3

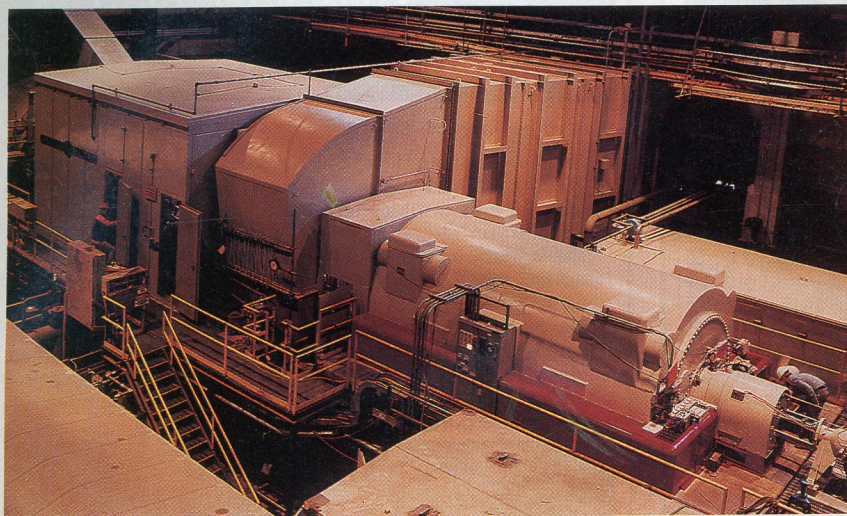
## Features

|   |    |
|---|----|
| The Global Gas Turbine Market in 1994 .....                   | 8  |
| Turbine Market Forecast, 1995 to 2004 .....                   | 16 |
| World's Independent Power Producer Market Whirls Faster ..... | 21 |
| Marine Propulsion: Gas Turbines Making Waves .....            | 26 |
| Wind Turbines: New Power From an Old Source .....             | 30 |

## Indexes

|                                      |    |
|--------------------------------------|----|
| Category Index .....                 | 34 |
| Company Index .....                  | 35 |
| Engineering & Consultant Guide ..... | 88 |

# E N T S



## How to Use the Handbook

Here is your 1995 edition of the **Turbomachinery International Handbook**.

- The **Features** section, beginning on page 8, provides analysis of the present and future of the turbine industry.

- The alphabetical **Company Index** or directory, beginning on page 35, provides complete information on every company listed in the handbook.

- **Section Directories** in Sections 1-5 provide lists of companies in specific segments of the turbomachinery market. (Full information on each of these companies is in the Company Index.) See the **Category Index** on page 34 to find the directory for a specific segment.

- The alphabetical **Engineering & Consultant Guide**, beginning on page 88, provides information on engineering and consulting companies.

- **Equipment Specifications** are in sections 1-3. Refer to the Table of Contents on this page to find the specifications in each section.

- Our popular **Maintenance, Overhaul & Repair Wall Chart**, which lists companies' maintenance, overhaul and repair services, begins on page 205. (Once again, full information on each company is in the Company Index.)

## Section 1

### Gas Turbines

|  |     |
|--|-----|
| Directory .....                            | 108 |
| Mechanical Drive Specifications .....      | 119 |
| Electrical Generation Specifications ..... | 126 |
| Combined Cycle Specifications .....        | 139 |
| Marine Propulsion Specifications .....     | 148 |

## Section 2

### Steam Turbines

|   |     |
|---|-----|
| Steam Turbine Directory .....                 | 154 |
| Cogeneration/Renewable Energy Directory ..... | 156 |
| Steam Turbine Specifications .....            | 157 |
| Hydro Turbine Specifications .....            | 165 |

## Section 3

### Compressors, Expanders & Pumps

|                                      |     |
|--------------------------------------|-----|
| Directory .....                      | 168 |
| Turbocompressor Specifications ..... | 173 |
| Turboexpander Specifications .....   | 184 |

## Section 4

### Maintenance, Overhaul & Repair

|                           |     |
|---------------------------|-----|
| Directory .....           | 191 |
| Pull-Out Wall Chart ..... | 205 |

## Section 5

### Aftermarket/Product Directory

|                 |     |
|-----------------|-----|
| Directory ..... | 214 |
|-----------------|-----|

## Advertising Sales Offices

### Turbomachinery International-Headquarters

50 Day St., P.O. Box 5550  
Norwalk, CT 06856-5550, USA  
Tel: (203) 853-6015 ext. 114  
Fax: (203) 852-8175

### Turbomachinery International-Europe

Sales Plus-MPI Group  
4 Hubbard Road  
Houndmills, Basingstoke RG21 2UH  
Hampshire, England  
Tel: +44 1256 840 444  
Fax: +44 1256 817 877

### Turbomachinery International-Aisa

Mr. Yoshinori Ikeda, Managing Director  
Pacific Business, Inc  
Room 606 Yanagi Homes Building  
3-18 Nihonbashi Koamicho  
Chuo-Ku, Tokyo 103, Japan  
Tel: +81-3-3661-6138  
Fax: +81-3-3661-6139