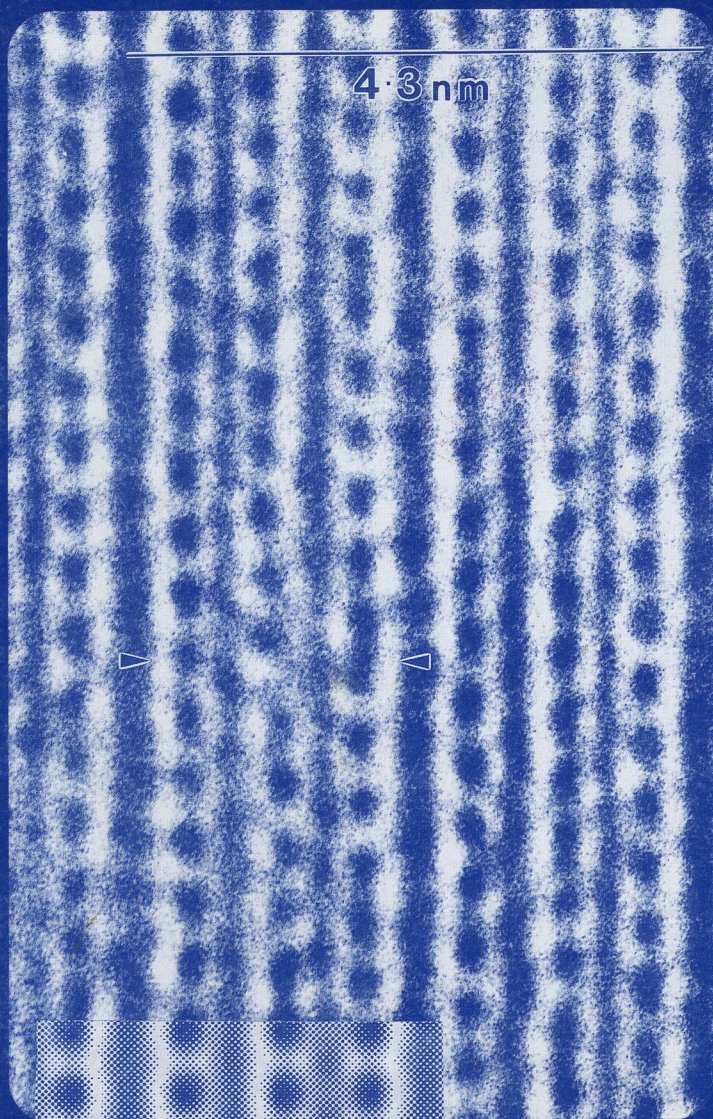


clays and clay minerals[®]



JOURNAL
OF THE
CLAY MINERALS
SOCIETY



Volume 42 Number 5 1994

Clays and Clay Minerals

Volume 42 Number 5 October 1994

Contents

Prograde Transitions of Corrensite and Chlorite in Low-Grade Pelitic Rocks from the Gaspé Peninsula, Quebec <i>Wei-Teh Jiang and Donald R. Peacor</i>	497
The Al Pillaring of Clays. Part II. Pillaring with $[Al_{13}O_4(OH)_{24}(H_2O)_{12}]^{7+}$ <i>Robert A. Schoonheydt, Hugo Leeman, Anita Scorpion, Ingrid Lenotte, and P. Grobet</i>	518
Formation of Hydrotalcite-Like Compounds During R7T7 Nuclear Waste Glass and Basaltic Glass Alteration <i>A. Abdelouas, J. L. Crovisier, W. Lutze, B. Fritz, A. Mosser, and R. Müller</i>	526
Surface Diffusion: Is It An Important Transport Mechanism in Compacted Clays? <i>Dennis W. Oscarson</i>	534
Refinement of the Crystal Structure of Cronstedtite-3T <i>Lubomír Smrčok, Slavomil Ďurovič, Václav Petříček, and Zdeněk Weiss</i>	544
Preparation and Characterization of Two Distinct Ethylene Glycol Derivatives of Kaolinite <i>James J. Tunney and Christian Detellier</i>	552
2H NMR Study of Hydrogen Bonding in Deuterated Kaolinite <i>Shigenobu Hayashi, Etsuo Akiba, Ritsuro Miyawaki, and Shinji Tomura</i>	561
Alteration of Ilmenite in the Manavalakurichi Deposit, India <i>D. S. Suresh Babu, K. A. Thomas, P. N. Mohan Das, and A. D. Damodaran</i>	567
Oxygen Isotopic Constraints on the Origin of Nodular Silica-Apatite from the Har Peres Pyroclastics, Golan Heights, Israel <i>C. Mizota and N. Yoshida</i>	572
Nacritic Clay Associated with the Jiangshan-Shaoxing Deep Fault in Zhejiang Province, China <i>Z. Y. Shen, M. J. Wilson, A. R. Fraser, and M. J. Pearson</i>	576
Palagonite Reconsidered: Paracrystalline Illite-Smectites from Regoliths on Basic Pyroclastics <i>Vadim Berggaut, Arie Singer, and Karl Stahr</i>	582
Chlorite Geothermometry?—Contamination and Apparent Octahedral Vacancies <i>Wei-Teh Jiang, Donald R. Peacor, and Peter R. Buseck</i>	593
Effect of the Presence of Aluminum Ions in Iron Solutions on the Formation of Iron Oxyhydroxides (FeOOH) at Room Temperature Under Acidic Environment <i>S. Shah Singh and Hideomi Kodama</i>	606
The Sol Concentration Effect in n-Butylammonium Vermiculite Swelling <i>G. D. Williams, K. R. Moody, M. V. Smalley, and S. M. King</i>	614
The Center Shift in Mössbauer Spectra of Maghemite and Aluminum Maghemites <i>G. M. Da Costa, E. De Grave, L. H. Bowen, R. E. Vandenberghe, and P. M. A. De Bakker</i>	628
Redox Treatment of an Fe/Al Pillared Montmorillonite. A Mössbauer Study <i>T. Bakas, A. Moukarika, V. Papaefthymiou, and A. Ladavos</i>	634
Kaolinite/Montmorillonite Resembles Beidellite <i>J. Cuadros, A. Delgado, A. Cardenete, E. Reyes, and J. Linares</i>	643
Notes	
Octahedral or Tetrahedral Isomorphous Substitution: How it Affects Water and Acetonitrile Interaction with a Clay, as Seen by NMR <i>Jean Grandjean and Pierre Laszlo</i>	652
Book Review	
Clay-Water Interface and its Rheological Applications <i>Peter L. Hall</i>	655

Annual Sustaining Members and Patrons of The Clay Minerals Society

Patrons

Chevron Petroleum Technology Company
Dry Branch Kaolin
Engelhard Corporation
Southern Clay Products
United Catalysts, Inc.
Unocal
J. L. White Inc.

Members

Alpha Earth Inc.
American Colloid Company
Anglo-American Clays

Aqualine Corporation
Burgess Pigment Company
Conoco, Inc.
Exxon Production Research Company
The Floridin Company
Golden Cat Corporation
W. R. Grace & Company
A. P. Green Refractories Co.
Halliburton Services
J. M. Huber Corporation, Clay Division
Kentucky-Tennessee Clay Company
Marathon Oil Company

Oil-Dri Corporation of America
Shell Development Company
Siemens Analytical X-Ray
H. C. Spinks Clay Company
Texaco EPTD
Thiele Kaolin Company
R. T. Vanderbilt Co. Inc.
Willamette Geological Service
Woodward-Clyde Consultants
Wyo-Ben Inc.

ISSN 0009-8604
CCM PA42(5)497-656(1994)