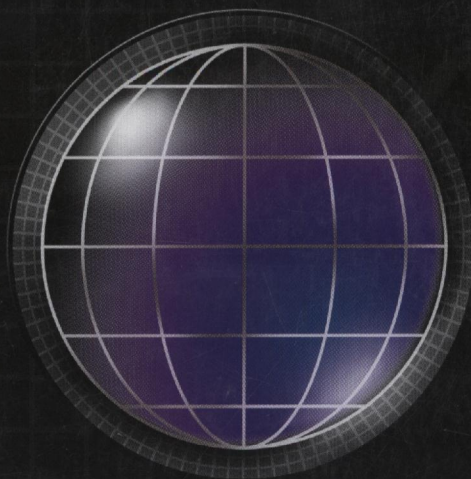
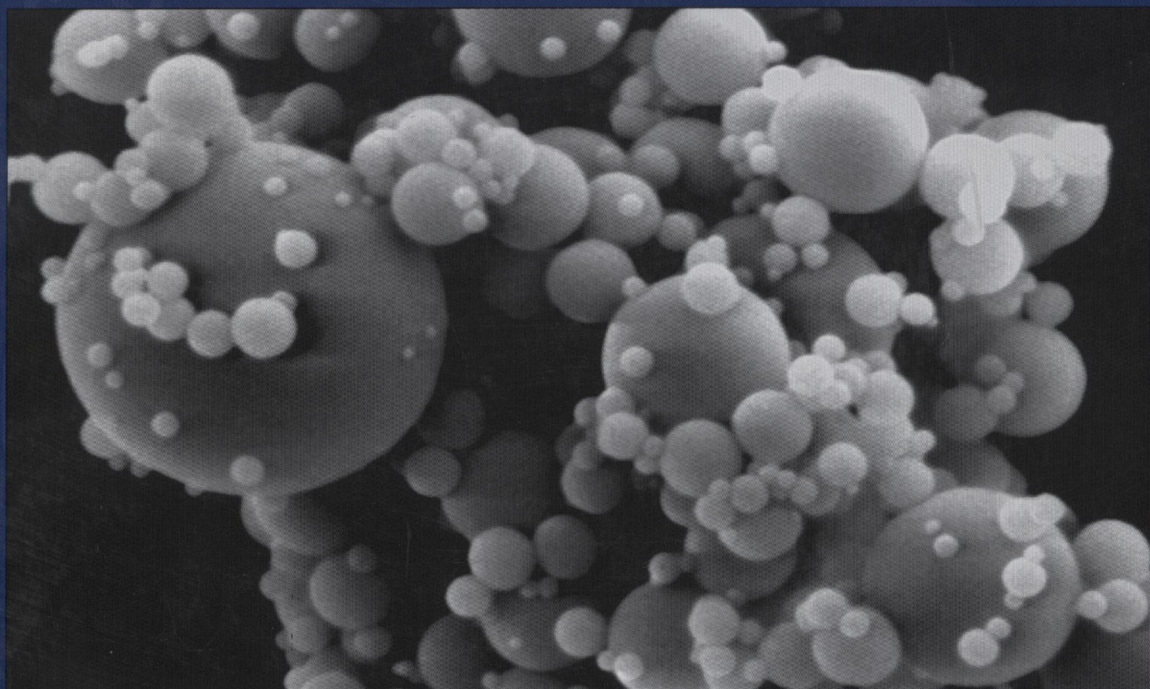
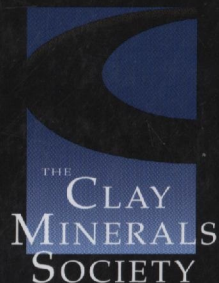


# CLAYS AND CLAY MINERALS<sup>®</sup>



[www.clays.org/journal/journal.html](http://www.clays.org/journal/journal.html)



Participating Publisher  
**GSW**  
[www.GeoScienceWorld.org](http://www.GeoScienceWorld.org)

VOLUME 57

2009



## Contents

Significance of phyllosilicate mineralogy and mineral chemistry in an epithermal environment. Insights from the Palai-Islica Au-Cu deposit (Almería, SE Spain) <i>Javier Carrillo-Rosúa, Salvador Morales-Ruano, Iñaki Esteban-Arispe, and Purificación Fenoll Hach-Ali</i>	1
X-ray diffraction line-broadening study on two vibrating, dry-milling procedures in kaolinites <i>Pablo Pardo, Joaquín Bastida, Francisco J. Serrano, Rafael Ibáñez, and Marek A. Kojdecki</i>	25
Rapid and direct synthesis of spherical organotalc <i>Maguy Jaber, Fabrice O. M. Gaslain, and Jocelyne Miehé-Brendlé</i>	35
Structural characterization of (Cu <sup>2+</sup> ,Na <sup>+</sup> )- and (Cu <sup>2+</sup> ,NH <sub>4</sub> <sup>+</sup> )-exchanged bentonites upon thermal treatment <i>Torsten Seiffarth and Christian Kaps</i>	40
Magnetic enhancement during the crystallization of ferrihydrite at 25 and 50°C <i>E. Cabello, M. P. Morales, C. J. Serna, V. Barrón, and J. Torrent</i>	46
Hydrogen bonding and vibrational spectra in kaolinite-dimethylsulfoxide and -dimethylselenoxide intercalates – a solid-state computational study <i>Eva Scholtzová and L'ubomír Smrčok</i>	54
A new massive deposit of allophane raw material in Ecuador <i>Stephan Kaufhold, Annette Kaufhold, Reinhold Jahn, Salomón Brito, Reiner Dohrmann, Rainer Hoffmann, Hartmut Gliemann, Peter Weidler, and Manfred Frechen</i>	72
Bromide-ion distribution in the interlayer of the layered double hydroxides of Zn and Al: observation of positional disorder <i>S. V. Prasanna, A. V. Radha, P. Vishnu Kamath, and S. Kannan</i>	82
Extraction of diagenetic and detrital ages and of the <sup>40</sup> K <sub>detrital</sub> / <sup>40</sup> K <sub>diagenetic</sub> ratio from K-Ar dates of clay fractions <i>Marek Szczerba and Jan Šrodoň</i>	93
Clay profiling: the classification of montmorillonites <i>Katja Emmerich, Felicitas Wolters, Guenter Kahr, and Gerhard Lagaly</i>	104
A comprehensive characterization of dioctahedral smectites <i>Felicitas Wolters, Gerhard Lagaly, Guenter Kahr, Rolf Nueesch, and Katja Emmerich</i>	115
Nomenclature for stacking in phyllosilicates: Report of the Association Internationale pour l'Etude des Argiles (AIPEA) Nomenclature Committee for 2008 <i>Stephen Guggenheim, John M. Adams, Faiza Bergaya, Maria F. Brigatti, Victor A. Drits, Milton L. L. Formoso, Emilio Galán, Toshihiro Kogure, Helge Stanjek, and Joseph Stucki</i>	134
Marilyn and Sturges W. Bailey Distinguished Member Award 2001 <i>James P. Quirk</i>	136
Forthcoming papers	138

## Annual Sustaining Members, Patrons, and Benefactors of The Clay Minerals Society

## Patrons

IMERYS  
The Sorptive Minerals Institute (SMI)  
Thiele Kaolin Company

## Members

Chevron ETC  
M-I Swaco  
Wyo-Ben, Inc.

## Individuals

Richard W. Berry  
David L. Bish

John D. Bloch  
Richard K. Brown  
Wen-An Chiou  
Michael L. Cummings  
Randall T. Cygan  
Ray E. Ferrell  
Allanah Fitch  
Will P. Gates  
J. Reed Glasmann  
Stephen Guggenheim  
Necip Güven  
Wayne Hudnall  
Warren D. Huff

William D. Johns  
Blair Jones  
George H. Kacandes  
David A. Laird  
Robert H. Lander  
Duane M. Moore  
Joseph W. Stucki  
James P. Talbot  
Kenneth M. Towe  
Don M. Triplehorn  
Michael A. Velbel