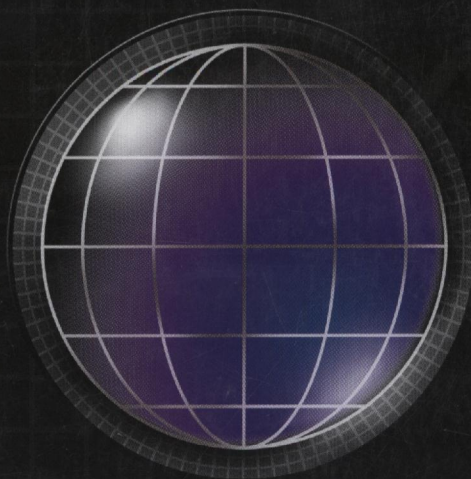
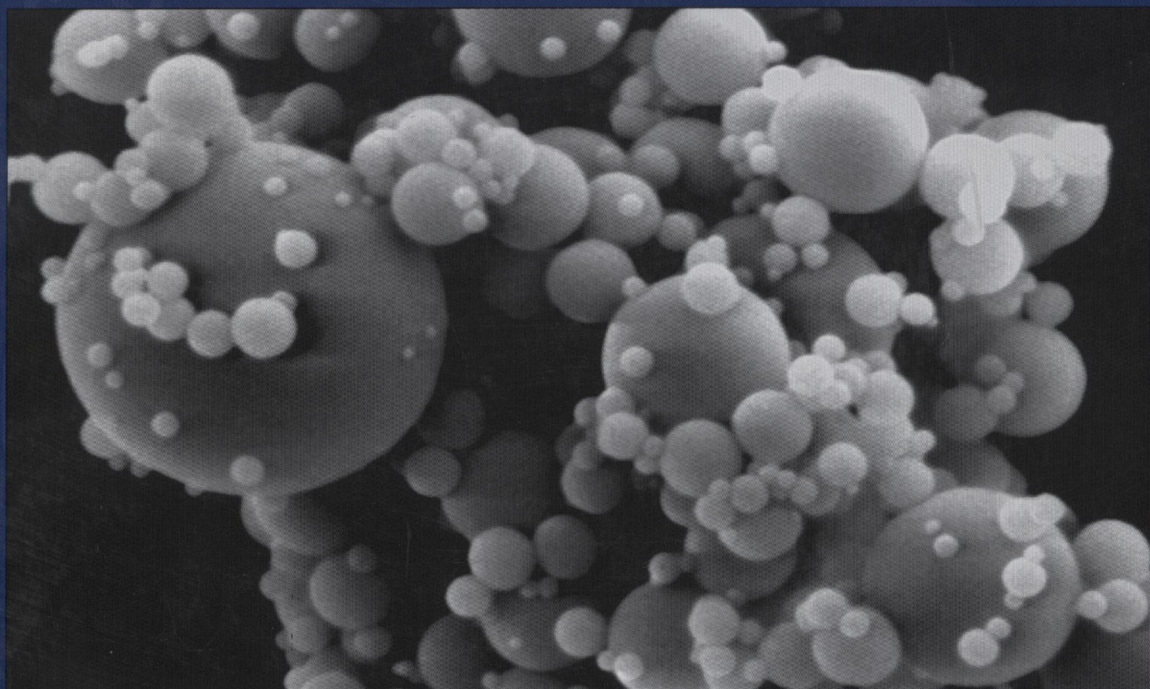
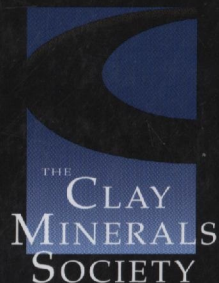


# CLAYS AND CLAY MINERALS<sup>®</sup>



[www.clays.org/journal/journal.html](http://www.clays.org/journal/journal.html)



Participating Publisher  
**GSW**  
[www.GeoScienceWorld.org](http://www.GeoScienceWorld.org)

VOLUME 57

2009

## Clays and Clay Minerals

Volume 57 Number 5 October 2009

### Contents

|   |     |
|---|-----|
| Relationship between Pb <sup>2+</sup> adsorption and average Mn oxidation state in synthetic birnessites<br><i>Wei Zhao, Haojie Cui, Fan Liu, Wenfeng Tan, and Xionghan Feng</i>  | 513 |
| Origin and mineralogy of sepiolite and palygorskite from the Tuluanshan Formation, Eastern Taiwan<br><i>Ming Kuang Wang, Pao Chung Tseng, Shyun Sheng Chang, Dah Tong Ray, Yen Hong Shau, Yun Wei Shen, Ruey Chyong Chen, and Po Neng Chiang</i>  | 521 |
| Partial dissolution of glauconitic samples: implications for the methodology of K-Ar and Rb-Sr dating<br><i>Arkadiusz Derkowski, Jan Srodoń, Wojciech Franus, Peter Uhlík, Michał Banaś, Grzegorz Zieliński, Maria Čaplovičová, and Małgorzata Franus</i>   | 531 |
| Evidence of degradation of triarylmethine dyes on Texas vermiculite<br><i>Giora Rytwo, Yotam Gonen, and Reuma Huterer-Shveky</i>  | 555 |
| Progressive formation of halloysite from the hydrothermal alteration of biotite and the formation mechanisms of anatase in altered volcanic rocks from Limnos Island, northeast Aegean Sea, Greece<br><i>Dimitrios Papoulis, Panagiota Tsohis-Katagas, Angelos G. Kalamounias, and Basilios Tsikouras</i> | 566 |
| Effect of silica polymerization on the oxalate-promoted dissolution of goethite<br><i>Matthew J. Eick, Todd P. Luxton, and Holly A. Welsh</i>   | 578 |
| Effect of the size of aggregates on pore characteristics of minerals measured by mercury intrusion and water-vapor desorption techniques<br><i>Grzegorz Jozefaciuk</i>  | 586 |
| Clay mineralogy along the laterite profile in Hubei, South China: mineral evolution and evidence for eolian origin<br><i>Hanlie Hong, Zhaohui Li, and Ping Xiao</i>   | 602 |
| Clayey cap-rock behavior in H <sub>2</sub> O-CO <sub>2</sub> media at low pressure and temperature conditions: an experimental approach<br><i>Eric Kohler, Teddy Parra, and Olivier Vidal</i>   | 616 |
| Functionalization of the interlayer surfaces of kaolinite by alkylammonium groups from ionic liquids<br><i>Sadok Letaief and Christian Detellier</i>  | 638 |
| The charge of component layers of illite-smectite in bentonites and the nature of end-member illite<br><i>Jan Srodoń, Edwin Zeelmaekers, and Arkadiusz Derkowski</i>  | 649 |
| Forthcoming papers  | 672 |

### Annual Sustaining Members, Patrons, and Benefactors of The Clay Minerals Society

#### Benefactors

Chevron ETC  
Exxon  
The Sorptive Minerals Institute  
Wyo-Ben, Inc.

#### Patrons

H.H. Murray & Associates  
IMERYS  
M-I Swaco  
Thiele Kaolin Company

#### Individuals

Christian Bender Koch

Richard W. Berry  
David L. Bish  
John D. Bloch  
Carl J. Bowser  
Richard K. Brown  
Wen-An Chiou  
Michael L. Cummings  
Randall T. Cygan  
Joe B. Dixon  
Ray E. Ferrell  
Alanah Fitch  
Will P. Gates  
J. Reed Glasmann  
Stephen Guggenheim

Necip Güven  
Wayne Hudnall  
Warren D. Huff  
William D. Johns  
Blair Jones  
George H. Kacandes  
David A. Laird  
Robert H. Lander  
Duane M. Moore  
Haydn H. Murray  
Joseph W. Stucki  
James P. Talbot  
Kenneth M. Towse  
Don M. Triplehorn

ISSN 0009-8604  
CCM PA57(5)513-672(October)