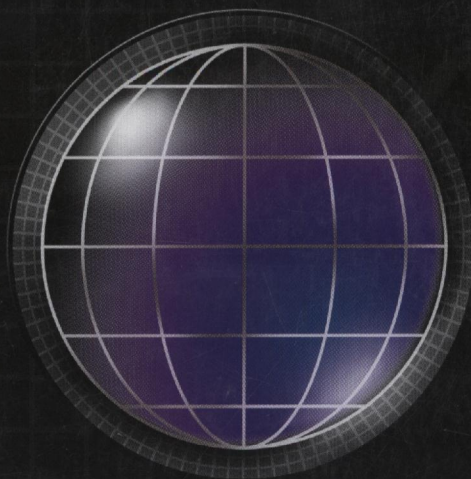
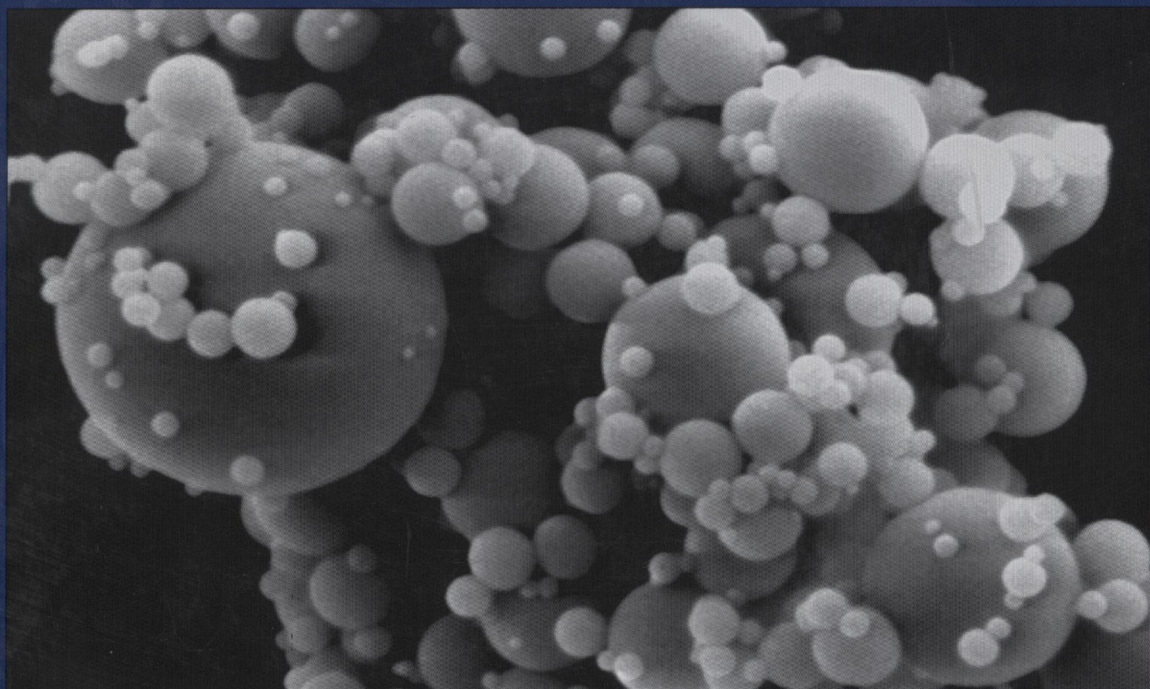
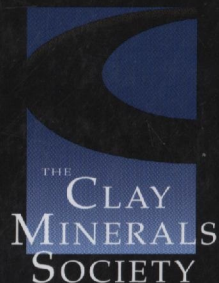


CLAYS AND CLAY MINERALS[®]



www.clays.org/journal/journal.html



Participating Publisher
GSW
www.GeoScienceWorld.org

VOLUME 57

2009

Clays and Clay Minerals

Volume 57 Number 6 December 2009

Contents

Al-saturated phlogopite: charge considerations and crystal chemistry <i>Thomas J. Bujnowski, Stephen Guggenheim, and Maria Franca Brigatti</i>	673
Variation of preferred orientation in oriented clay mounts as a result of sample preparation and composition <i>R. Dohrmann, K. B. Rüping, M. Kleber, K. Ufer, and R. Jahn</i>	686
Removal of a binary dye mixture of Congo Red and Malachite Green from aqueous solutions using a bentonite adsorbent <i>Abdil Özdemir and Can Serkan Keskin</i>	695
AFM study of smectites in hybrid Langmuir-Blodgett films: saponite, Wyoming bentonite, hectorite, and Laponite <i>Tamás Szabó, Jun Wang, Alexander Volodin, Chris van Haesendonck, Imre Dekany, and Robert A. Schoonheydt</i>	706
Birnessites with different average manganese oxidation states synthesized, characterized, and transformed to todorokite at atmospheric pressure <i>Haojie Cui, Guohong Qiu, Xionghan Feng, Wenfeng Tan, and Fan Liu</i>	715
Low-temperature hydrothermal alteration of trachybasalt at Conical Seamount, Papua New Guinea: formation of smectite and metastable precursor phases <i>Giovanna Giorgetti, Thomas Monecke, Reinhard Kleeberg, and Mark D. Hannington</i>	725
Crystal-chemical changes of mixed-layer kaolinite-smectite with progressive kaolinization, as investigated by TEM-AEM and HRTEM <i>Javier Cuadros, Fernando Nieto, and Teresa Wing-Dudek</i>	742
Rapid dehydroxylation of nickeliferous goethite in lateritic nickel ore: X-ray diffraction and TEM investigation <i>Matthew Landers, Robert J. Gilkes, and Martin A. Wells</i>	751
Crystallographic site distribution and redox activity of Fe in nontronites determined by optical spectroscopy <i>Rose B. Merola and Molly M. McGuire</i>	771
Kaolinite intercalation precursors <i>Yanfeng Li, Dewen Sun, Xiaobing Pan, and Bo Zhang</i>	779
Removal of Fe from kaolin by chemical leaching and bioleaching <i>Volkan Arslan and Oktay Bayat</i>	787
Carbonate-induced structural perturbation of Al hydroxides <i>G. Y. Zhang, Y. F. Hu, R. K. Xu, J. J. Dynes, R. I. R. Blyth, L. M. Kozak, and P. M. Huang</i>	795
Joseph W. Stucki: 2009 Recipient of the Marilyn and Sturges W. Bailey Distinguished Member Award <i>Peter Komadel</i>	808
Forthcoming papers	810
Technical Referees	811
Comprehensive Subject and Author Index, Volume 57, 2009	812
Contents of Volume 57, 2009	i
	822

Annual Sustaining Members, Patrons, and Benefactors of The Clay Minerals Society

Benefactors

Chevron ETC
Exxon
The Sorptive Minerals Institute
Wyo-Ben, Inc.

Patrons

H.H. Murray & Associates
IMERYS
M-I Swaco
Thiele Kaolin Company

Individuals

Christian Bender Koch

Richard W. Berry
David L. Bish
John D. Bloch
Carl J. Bowser
Richard K. Brown
Wen-An Chiou
Michael L. Cummings
Randall T. Cygan
Joe B. Dixon
Ray E. Ferrell
Alanah Fitch
Will P. Gates
J. Reed Glasmann
Stephen Guggenheim

Necip Güven
Wayne Hudnall
Warren D. Huff
William D. Johns
Blair Jones
George H. Kacandes
David A. Laird
Robert H. Lander
Duane M. Moore
Haydn H. Murray
Joseph W. Stucki
James P. Talbot
Kenneth M. Towse
Don M. Triplehorn