

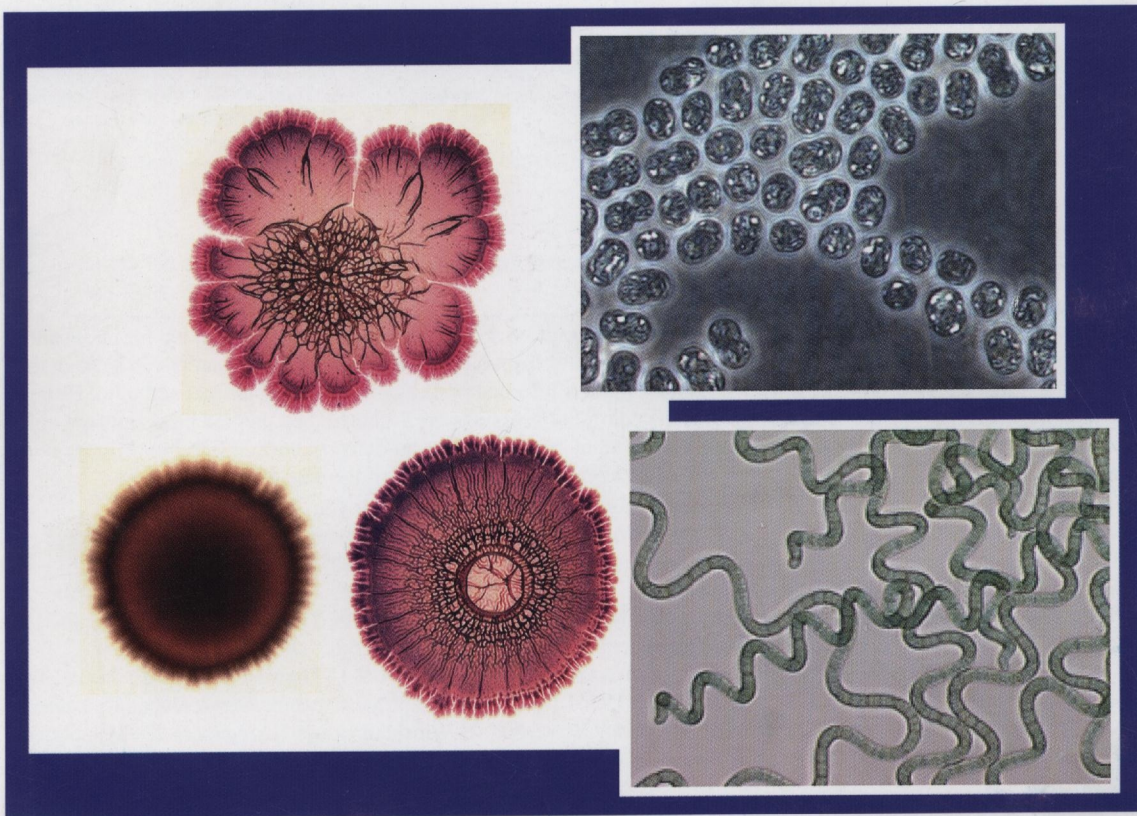


INSTITUT PASTEUR

ISSN 0923-2508

Research in **Microbiology**

Established in 1887 as the 'Annales de l'Institut Pasteur'



ELSEVIER

Vol. 160



Cited/abstracted in: Biological Abstracts/Biosis, CNRS/Pascal, Current Contents (Life Sciences), Excerpta Medica/EMbase, Index Medicus/Medline, Science Citation Index, Scopus.

ORIGINAL ARTICLES

Ecology and population dynamics

- Screening Swiss water bodies for potentially pathogenic free-living amoebae**
C. Gianinazzi, M. Schild, F. Wüthrich, N. Ben Nouir, H.-P. Füchslin, N. Schürch, B. Gottstein, N. Müller 367

- Defining the natural habitat of *Bacillus* spore-formers**
H.A. Hong, E. To, S. Fakhry, L. Baccigalupi, E. Ricca, S.M. Cutting 375

Physiology and metabolism

- Choice of an adequate promoter for efficient complementation in *Saccharomyces cerevisiae*: a case study**
L. Lo Presti, L. Cerutti, M. Monod, P.M. Hauser 380

- Role of conserved cysteine residues in *Herbaspirillum seropedicae* NifA activity**
M.A.S. Oliveira, V.A. Baura, B. Aquino, L.F. Huergo, M.A.S. Kadowaki, L.S. Chubatsu, E.M. Souza, R. Dixon, F.O. Pedrosa, R. Wasseem, R.A. Monteiro 389

- Misfolded maltose binding protein MalE219 induces the CpxRA envelope stress response by stimulating phosphoryl transfer from CpxA to CpxR**
R.F. Keller, S. Hunke 396

- Characterization of salivaricin CRL 1328, a two-peptide bacteriocin produced by *Lactobacillus salivarius* CRL 1328 isolated from the human vagina**
E. Vera Pingitore, E.M. Hébert, M.E. Nader-Macías, F. Sesma 401

Molecular genetics and genomics

- Origin of the Sox multienzyme complex system in ancient thermophilic bacteria and coevolution of its constituent proteins**
W. Ghosh, S. Mallick, S.K. DasGupta 409

- Human vaginal *Lactobacillus rhamnosus* harbor mutation in 23S rRNA associated with erythromycin resistance**
J. Begovic, G. Huys, B. Mayo, K. D'Haene, A.B. Florez, J. Lozo, M. Kojic, I. Strahinic, L. Topisirovic 421

Mobile elements

- Diverse *aadA* gene cassettes on class 1 integrons introduced into soil via spread manure**
C.T.T. Binh, H. Heuer, M. Kaupenjohann, K. Smalla 427

IN MEMORIAM

- Obituary: Elie Wollman, 1917-2008**
M. Schwartz 434