

ISSN 0022-3727

IOP

Journal of Physics D

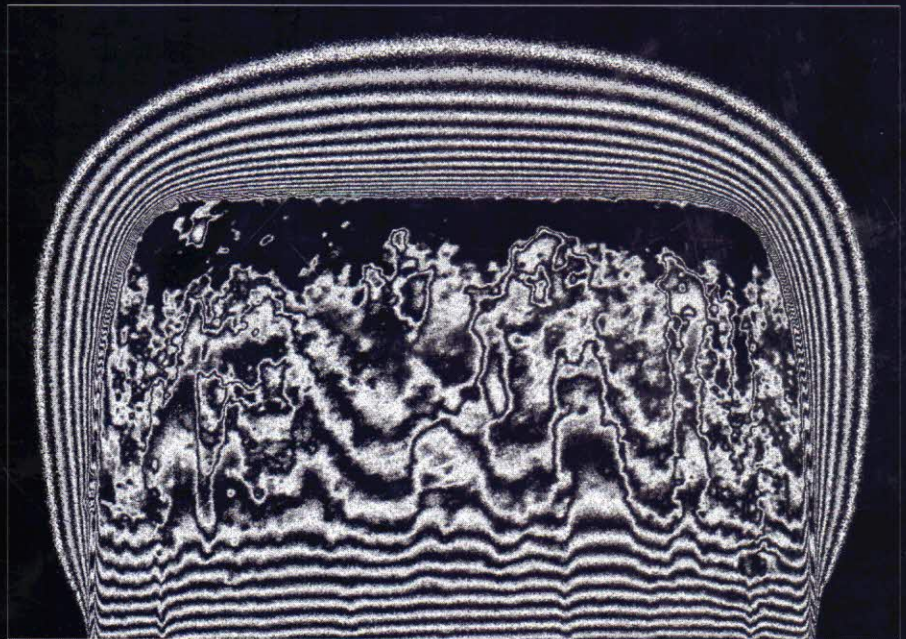
Applied Physics

Volume 38 Number 17 7 September 2005

**Special issue: 10th International Symposium on the Science and
Technology of Light Sources (LS-10, Toulouse, France,
18–22 July 2004)**

Guest Editors: D O Wharmby, G Zissis and J E Lawler

Online: www.iop.org/journals/jphysd



Institute of **Physics** PUBLISHING

Journal of Physics D: Applied Physics

Volume 38

Number 17

7 September 2005

SPECIAL ISSUE: 10th INTERNATIONAL SYMPOSIUM ON THE SCIENCE AND TECHNOLOGY OF LIGHT SOURCES (LS-10, TOULOUSE, FRANCE, 18–22 JULY 2004)

EDITORIAL

Special issue on light sources

D O Wharmby, G Zissis and J E Lawler (Guest Editors)

REVIEW ARTICLE

2995 UHP lamp systems for projection applications

G Derra, H Moench, E Fischer, H Giese, U Hechtfisher, G Heusler, A Koerber, U Niemann, F-C Noertemann, P Pekarski, J Pollmann-Retsch, A Ritz and U Weichmann

PAPERS

3011 Ray-tracing model for radiation transport in three-dimensional LTE systems

M Galvez

3016 Numerical validation of a self-absorption model for plasma radiation

D Karabourniotis and J van der Mullen

3028 Influence of electrode, buffer gas and control gear on metal halide lamp performance

A Lamouri, A Naruka, J Sulcs, C V Varanasi and T R Brumleve

3033 Status quo of ceramic material for metal halide discharge lamps

T G M M Kappen

3040 Effects and mechanism of sodium loss in quartz metal halide lamps

W van Erk, J Tu and J Suijker

3047 Residual stress anisotropy in high pressure sodium lamp seals

Z Tóth, Z Koltai, G Steinbach, A Juhász and K Váradi

3057 Transparent ceramic lamp envelope materials

G C Wei

3066 High temperature getter for compact HID lamps

B J de Maagt and A Corazza

3071 Infrared continuum radiation from high and ultra-high pressure mercury lamps

J E Lawler, A Koerber and U Weichmann

3086 Temperature profiles and thermal losses in 150 W high-intensity discharge lamps

J J Curry, C J Sansonetti and J Wang

3093 Scaling of low-aspect ratio HID lamps

T D Dreeben

3098 Understanding anode and cathode behaviour in high-pressure discharge lamps

P Flesch and M Neiger

3112 The plasma boundary layer of HID-cathodes: modelling and numerical results

S Lichtenberg, L Dabringhausen, O Langenscheidt and J Mentel

3128 Different modes of arc attachment at HID cathodes: simulation and comparison with measurements

L Dabringhausen, O Langenscheidt, S Lichtenberg, M Redwitz and J Mentel

3143 Spectroscopic investigation of the plasma boundary layer in front of HID-electrodes

M Redwitz, O Langenscheidt and J Mentel

3155 Modelling current transfer to cathodes in metal halide plasmas

M S Benilov, M D Cunha and G V Naïdis

(Continued on inside back cover)