

AMERICAN JOURNAL OF OPHTHALMOLOGY[®]

VOLUME 148

**THE AS-NEEDED TREATMENT STRATEGY FOR CHOROIDAL NEOVASCULARIZATION:
A FEEDBACK-BASED TREATMENT SYSTEM**

Spaide

ACANTHAMOEBA KERATITIS ASSOCIATED WITH CONTACT LENS WEAR IN SINGAPORE

Por, Mehta, Chua, and Co-Authors

VITREOUS PENETRATION OF ORALLY ADMINISTERED FAMCICLOVIR

Chong, Johnson, Huynh, and Co-Authors

**VITREOMACULAR ADHESION IN ACTIVE AND END-STAGE AGE-RELATED
MACULAR DEGENERATION**

Robison, Krebs, Binder, and Co-Authors

EFFECTIVENESS OF TREATMENTS FOR METASTATIC UVEAL MELANOMA

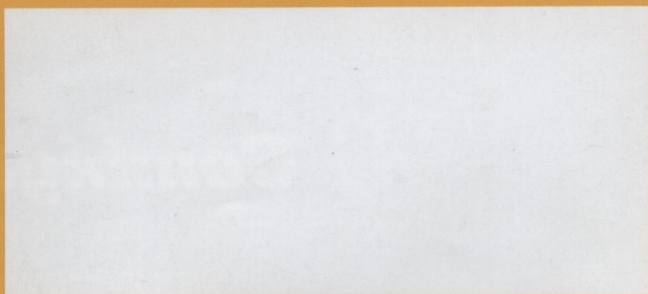
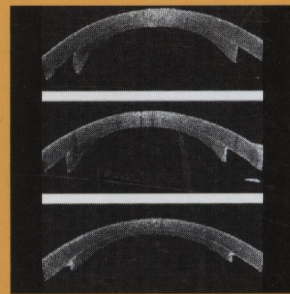
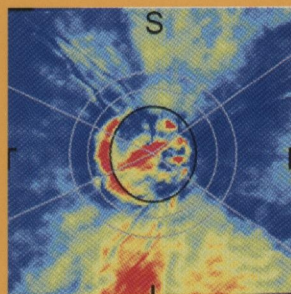
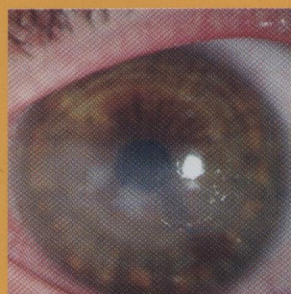
Augsburger, Corrêa, and Shaikh

**SPEED OF TELEMEDICINE vs OPHTHALMOSCOPY FOR RETINOPATHY OF
PREMATURITY DIAGNOSIS**

Richter, Sun, Lee, and Co-Authors

**VISUAL PERFORMANCE AFTER IMPLANTABLE COLLAMER LENS IMPLANTATION AND
WAVEFRONT-GUIDED LASER IN SITU KERATOMILEUSIS FOR HIGH MYOPIA**

Igarashi, Kamiya, Shimizu, and Komatsu



AJO[®]

MONTHLY SINCE 1884
Full-text online at www.ajo.com

ELSEVIER

ISSN 0002-9394

AMERICAN JOURNAL OF OPHTHALMOLOGY®

ISSN 0002-9394 • VOL. 148, NO. 5 NOVEMBER 2009

CONTENTS

EDITORIALS

• 629 Deep anterior lamellar keratoplasty: when should it replace penetrating keratoplasty? *John E. Sutphin, Kenneth M. Goins, and Michael D. Wagoner*

• 632 Sympathetic ophthalmia: what have we learned? *H. Nida Sen, and Robert B. Nussenblatt*

• 634 The perils of glaucoma surgical outcome analysis. *L. Jay Katz, Jonathan S. Myers, and Scott J. Fudemberg*

SERIES ON STATISTICS

• 636 Risk interpretation, perception, and communication. *Nicholas P. Jewell*

PERSPECTIVES

• 639 Confocal microscopy in ophthalmology. *Jay C. Erie, Jay W. McLaren, and Sanjay V. Patel*
Clinical confocal microscopy has provided a better understanding of the cellular microstructure of normal, postsurgical, and diseased corneas by enabling quantitative analysis of the cellular response. Confocal scans can provide corneal thickness, subbasal nerve, stromal cell, and endothelial cell densities, and assessments of light scatter, as well as clinical assessment of infections and other disorders. The authors present a perspective on the methods and measurements from confocal images of the human cornea.

• 647 Safety implications of vascular endothelial growth factor blockade for subjects receiving intravitreal anti-vascular endothelial growth factor therapies. *Karl Csaky and Diana V. Do*

The evaluation of potential safety risks associated with nonspecific vascular endothelial growth factor (VEGF) inhibitors is imperative. We discuss potential safety issues with current anti-VEGF therapies in neovascular age-related macular degeneration and consider methods for identifying low rate systemic safety signals.

ORIGINAL ARTICLES

• 657 Angle-closure glaucoma—simpler answers to complex mechanisms: LXVI Edward Jackson Memorial Lecture. *Harry A. Quigley*

Several dynamic concepts explain angle-closure mechanisms that add to static, anatomic measures. Iris stroma loses volume on pupil dilation; angle-closure eyes lose less volume, contributing to meshwork obstruction. Plateau iris derives from insertional position of iris dilator into ciliary epithelium. The choroid expands and contracts, providing another factor that participates in angle-closure. Poor fluid conductivity through the vitreous is a mechanism of malignant glaucoma and aqueous misdirection is not a likely factor.

• 670 Three-year follow-up of the Tube Versus Trabeculectomy Study. *Steven J. Gedde, Joyce C. Schiffman, William J. Feuer, Leon W. Herndon, James D. Brandt, and Donald L. Budenz, on behalf of the Tube Versus Trabeculectomy Study Group*

The Tube Versus Trabeculectomy Study is a multicenter randomized clinical trial comparing the safety and efficacy of tube shunt surgery to trabeculectomy with mitomycin C in patients with previous ocular surgery. Tube shunt

AJO®