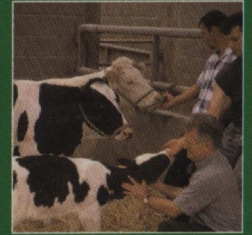


ISSN 1751-7311

VOLUME 2



animal

AN INTERNATIONAL JOURNAL OF ANIMAL BIOSCIENCE



animal

CAMBRIDGE
UNIVERSITY PRESS

CONTENTS

BSAS Annual Meeting, 2006. Session "Gut Microbiology"

Edwards, J. E., Huws, S. A., Kim, E. J., Lee, M. R. F., Kingston-Smith, A. H. and Scollan, N. D.
Advances in microbial ecosystem concepts and their consequences for ruminant agriculture (review) 653

John Wallace, R.

Gut microbiology – broad genetic diversity, yet specific metabolic niches (review) 661

Lu, J., Hofacre, C., Smith, F. and Lee, M. D.

Effects of feed additives on the development on the ileal bacterial community of the broiler chicken (review) 669

Nutrition

Schmidely, P., Glasser, F., Doreau, M. and Sauvant, D.

Digestion of fatty acids in ruminants: a meta-analysis of flows and variation factors. 1. Total fatty acids 677

Glasser, F., Schmidely, P., Sauvant, D. and Doreau, M.

Digestion of fatty acids in ruminants: a meta-analysis of flows and variation factors. 2. C18 fatty acids 691

González, L. A., Ferret, A., Manteca, X. and Calsamiglia, S.

Increasing sodium bicarbonate level in high-concentrate diets for heifers. I. Effects on intake, water consumption and ruminal fermentation 705

González, L. A., Ferret, A., Manteca, X. and Calsamiglia, S.

Increasing sodium bicarbonate level in high-concentrate diets for heifers. II. Effects on chewing and feeding behaviors 713

Li, T.-J., Dai, Q.-Z., Yin, Y.-L., Zhang, J., Huang, R.-L., Ruan, Z., Deng, Z. and Xie, M.

Dietary starch sources affect net portal appearance of amino acids and glucose in growing pigs 723

Boudry, C., Dehoux, J.-P., Wavreille, J., Portetelle, D., Théwis, A. and Buldgen, A.

Effect of a bovine colostrum whey supplementation on growth performance, faecal *Escherichia coli* population and systemic immune response of piglets at weaning 730

Savary-Auzeloux, I., Durand, D., Gruffat, D., Bauchart, D. and Ortigues-Marty, I.

Food restriction and refeeding in lambs influence muscle antioxidant status 738

Physiology and functional biology of systems

Theau-Clément, M., Lebas, F., Beckers, J. F. and Drion, P. V.

Evolution of anti-eCG antibodies in response to eCG doses and number of injections. Relationship with productivity of rabbit does 746

Drennan, M. J., McGee, M. and Keane, M. G.

The value of muscular and skeletal scores in the live animal and carcass classification scores as indicators of carcass composition in cattle 752

Simões, J., Baril, G., Almeida, J. C., Azevedo, J., Fontes, P. and Mascarenhas, R.

Time of ovulation in nulliparous and multiparous goats 761

Behaviour, welfare and health

Boyle, L. A., Boyle, R. M. and French, P.

Welfare and performance of yearling dairy heifers out-wintered on a wood-chip pad or housed indoors on two levels of nutrition 769

Farming systems and environment

Blanco, M., Villalba, D., Ripoll, G., Sauerwein, H. and Casasús, I.

Effects of pre-weaning concentrate feeding on calf performance, carcass and meat quality of autumn-born bull calves weaned at 90 or 150 days of age 779

Tiemann, T. T., Lascano, C. E., Wettstein, H.-R., Mayer, A. C., Kreuzer, M. and Hess, H. D.

Effect of the tropical tannin-rich shrub legumes *Calliandra calothyrsus* and *Flemingia macrophylla* on methane emission and nitrogen and energy balance in growing lambs 790

Product quality, human health and well-being

Bee, G., Jacot, S., Guex, G. and Biolley, C.

Effects of two supplementation levels of linseed combined with CLA or tallow on meat quality traits and fatty acid profile of adipose and different muscle tissues in slaughter pigs 800

Cambridge Journals Online

For further information about this journal please go to the journal web site at:
journals.cambridge.org/anm

