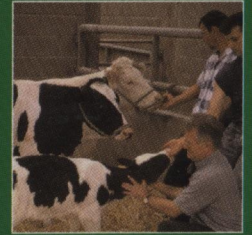


ISSN 1751-7311

VOLUME 2



animal

AN INTERNATIONAL JOURNAL OF ANIMAL BIOSCIENCE



animal

CAMBRIDGE
UNIVERSITY PRESS

CONTENTS

Breeding and genetics

Bidanel, J. P., Rosendo, A., Iannuccelli, N., Riquet, J., Gilbert, H., Caritez, J. C., Billon, Y., Amigues, Y., Prunier, A. and Milan, D.

Detection of quantitative trait loci for teat number and female reproductive traits in Meishan × Large White F2 pigs 813

García-Cortés, L. A., Martínez-Ávila, J. C. and Toro, M. A.

Partition of the genetic trend to validate multiple selection decisions 821

Nutrition

Wellock, I. J., Fortomaris, P. D., Houdijk, J. G. M. and Kyriazakis, I.

Effects of dietary protein supply, weaning age and experimental enterotoxigenic *Escherichia coli* infection on newly weaned pigs: performance 825

Wellock, I. J., Fortomaris, P. D., Houdijk, J. G. M. and Kyriazakis, I.

Effects of dietary protein supply, weaning age and experimental enterotoxigenic *Escherichia coli* infection on newly weaned pigs: health 834

Miron, J., Adin, G., Solomon, R., Nikbachat, M., Zenou, A., Shamay, A., Brosh, A. and Mabjeesh, S. Y.

Heat production and retained energy in lactating cows held under hot summer conditions with evaporative cooling and fed two rations differing in roughage content and *in vitro* digestibility 843

Juniper, D. T., Browne, E. M., Bryant, M. J. and Beever, D. E.

Digestion, rumen fermentation and circulating concentrations of insulin, growth hormone and IGF-1 in steers fed diets based on different proportions of maize silage and grass silage 849

Quesnel, H., Renaudin, A., Le Floch, N., Jondreville, C., Père, M. C., Taylor-Pickard, J. A. and Le Dividich, J.

Effect of organic and inorganic selenium sources in sow diets on colostrum production and piglet response to a poor sanitary environment after weaning 859

White, G. A., Doucet, F. J., Hill, S. E. and Wiseman, J.

Physicochemical properties and nutritional quality of raw cereals for newly weaned piglets 867

Physiology and functional biology of systems

Dhali, A., Karunakaran, M., Mech, A., Nath, N., Prakash, B., Rajkhowa, C. and Mishra, D. P.

Birth of the first mithun (*Bos frontalis*) calf through artificial insemination 879

Childs, S., Lynch, C. O., Hennessy, A. A., Stanton, C., Wathes, D. C., Sreenan, J. M., Diskin, M. G. and Kenny, D. A.

Effect of dietary enrichment with either n-3 or n-6 fatty acids on systemic metabolite and hormone concentration and ovarian function in heifers 883

Behaviour, welfare and health

Mounier, L., Colson, S., Roux, M., Dubroeuq, H., Boissy, A. and Veissier, I.

Positive attitudes of farmers and pen-group conservation reduce adverse reactions of bulls during transfer for slaughter 894

Barton Gade, P.

Effect of rearing system and mixing at loading on transport and lairage behaviour and meat quality: comparison of outdoor and conventionally raised pigs 902

O'Driscoll, K., Boyle, L., French, P., Meaney, B. and Hanlon, A.

The effect of out-wintering pad design on dirtiness score, somatic cell score and mastitis incidence in dairy cows 912

Saunders, J. E., Jarvis, J. R. and Wathes, C. M.

Calculating luminous flux and lighting levels for domesticated mammals and birds 921

Farming systems and environment

Mäntysaari, P. and Khalili, H.

Effect of the rate of increase in concentrate allowance with concentrates high or low in starch on the performance of dairy cows in early lactation 933

Huhtanen, P., Rinne, M. and Nousiainen, J.

Evaluation of concentrate factors affecting silage intake of dairy cows: a development of the relative total diet intake index 942

Koralagama, K. D. N., Mould, F. L., Fernandez-Rivera, S. and Hanson, J.

The effect of supplementing maize stover with cowpea (*Vigna unguiculata*) haulms on the intake and growth performance of Ethiopian sheep 954

Flores, C., Caja, G., Casals, R., Albanell, E. and Such, X.

Performance of dairy ewes fed diets with a fibrolytic enzyme product included in the concentrate during the suckling period 962

Patton, J., Murphy, J. J., O'Mara, F. P. and Butler, S. T.

A comparison of energy balance and metabolic profiles of the New Zealand and North American strains of Holstein Friesian dairy cow 969

Cambridge Journals Online

For further information about this journal please go to the journal web site at:

journals.cambridge.org/anm

