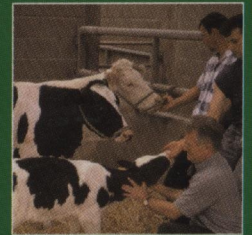
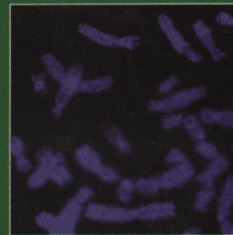
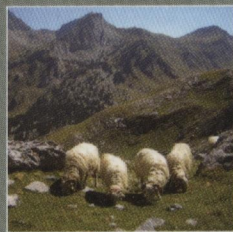


ISSN 1751-7311

VOLUME 2



animal

AN INTERNATIONAL JOURNAL OF ANIMAL BIOSCIENCE



animal

CAMBRIDGE
UNIVERSITY PRESS

CONTENTS

Breeding and genetics

- David, I., Robert-Granié, C., Manfredi, E., Lagriffoul, G. and Bodin, L.
Environmental and genetic variation factors of artificial insemination success in French dairy sheep 979
- Tantia, M. S., Mishra, B., Bharani Kumar, S. T., Mishra, B. P., Kataria, R. S., Mukesh, M. and Vijh, R. K.
Characterization of Osteopontin gene of *Bubalus bubalis* 987
- Zuccaro, A., Bordonaro, S., Criscione, A., Guastella, A. M., Perrotta, G., Blasi, M., D'Urso, G. and Marletta, D.
Genetic diversity and admixture analysis of Sanfratellano and three other Italian horse breeds assessed by microsatellite markers 991
- Sadeghi, M., Moradi Shahr Babak, M., Rahimi, G. and Nejati Javaremi, A.
Effect of leptin gene polymorphism on the breeding value of milk production traits in Iranian Holstein 999
- Gbangboche, A. B., Glele-Kakai, R., Salifou, S., Albuquerque, L. G. and Leroy, P. L.
Comparison of non-linear growth models to describe the growth curve in West African Dwarf sheep 1003
- Nishio, M., Kahi, A. K. and Hirooka, H.
Economic implications of using Japanese Black sires carrying recessive genes associated with genetic defects 1013

Nutrition

- Pinotti, L., Campagnoli, A., D'Ambrosio, F., Susca, F., Innocenti, M., Rebucci, R., Fusi, E., Cheli, F., Savoini, G., Dell'Orto, V. and Baldi, A.
Rumen-protected choline and vitamin E supplementation in periparturient dairy goats: effects on milk production and folate, vitamin B₁₂ and vitamin E status 1019
- Bolhuis, J. E., van den Brand, H., Staals, S. T. M., Zandstra, T., Alferink, S. J. J., Heetkamp, M. J. W. and Gerrits, W. J. J.
Effects of fermentable starch and straw-enriched housing on energy partitioning of growing pigs 1028
- Bermingham, E. N., Roy, N. C., Sutherland, I. A., Waghorn, G. C., Sinclair, B. R., Peters, J. S. and McNabb, W. C.
Intestinal amino acid absorption in lambs fed fresh Lucerne (*Medicago sativa*) during an established *Trichostrongylus colubriformis* infection 1037
- Corson, A. M., Laws, J., Litten, J. C., Dodds, P. F., Lean, I. J. and Clarke, L.
Effect of dietary supplementation of different oils during the first or second half of pregnancy on the glucose tolerance of the sow 1045

Behaviour, welfare and health

- Bertolucci, C., Giannetto, C., Fazio, F. and Piccione, G.
Seasonal variations in daily rhythms of activity in athletic horses 1055
- Bracke, M. B. M., Edwards, S. A., Metz, J. H. M., Noordhuizen, J. P. T. M. and Algers, B.
Synthesis of semantic modelling and risk analysis methodology applied to animal welfare 1061
- Gottardo, F., Brscic, M., Pozza, G., Ossensi, C., Contiero, B., Marin, A. and Cozzi, G.
Administration of dexamethasone *per os* in finishing bulls. I. Effects on productive traits, meat quality and cattle behaviour as indicator of welfare 1073
- Marin, A., Pozza, G., Gottardo, F., Moro, L., Stefani, A. L., Cozzi, G., Brscic, M., Andrighetto, I. and Ravarotto, L.
Administration of dexamethasone *per os* in finishing bulls. II. Effects on blood parameters used as indicators of animal welfare 1080

Farming systems and environment

- Queiroz, M. A. A., Fukushima, R. S., Gomide, C. A. and Braga, M. R.
Substitution of crude cell wall for neutral detergent fibre in the equations of the Cornell Net Carbohydrate and Protein System that predict carbohydrate fractions: application to sunflower (*Helianthus annuus* L.) 1087

Product quality, human health and well-being

- Indurain, G., Goñi, V., Horcada, A., Insausti, K., Hernández, B. and Beriain, M. J.
Colour differences among carcasses graded with similar score for conformation and fatness 1093

Cambridge Journals Online

For further information about this journal please go to the journal web site at:
journals.cambridge.org/anm

