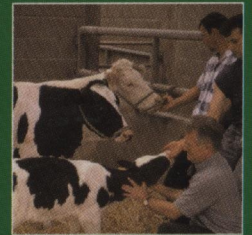
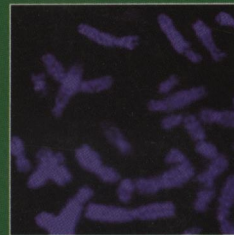
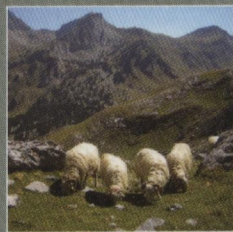


ISSN 1751-7311

VOLUME 2



animal

AN INTERNATIONAL JOURNAL OF ANIMAL BIOSCIENCE



animal

CAMBRIDGE
UNIVERSITY PRESS

CONTENTS

Breeding and genetics

- Wittenburg, D., Guiard, V., Teuscher, F. and Reinsch, N.
Comparison of statistical models to analyse the genetic effect on within-litter variance in pigs 1559
- Han, Li., Liang, A. X., Zhang, J., Fang, M., Hua, G. H., Sang, L., Geng, L. Y., Wang, H. R. and Yang, L. G.
Evaluation of the VP22 gene adjuvant for enhancement of DNA vaccine against somatostatin in mice 1569
- Clapperton, M., Glass, E. J. and Bishop, S. C.
Pig peripheral blood mononuclear leucocyte subsets are heritable and genetically correlated with performance 1575
- Kramer, E., Stamer, E., Spilke, J. and Krieter, J.
Analysis of water intake, dry matter intake and daily milk yield using different error covariance structures 1585

Nutrition

- Elek, P., Newbold, J. R., Gaal, T., Wagner, L. and Husveth, F.
Effects of rumen-protected choline supplementation on milk production and choline supply of periparturient dairy cows 1595
- Peterson, B. A., Hyun, Y., Stanisiewski, E. P., Hartnell, G. F. and Ellis, M.
Performance of growing-finishing pigs fed diets containing Roundup Ready wheat (MON 71800), a non-transgenic genetically similar wheat, or conventional wheat varieties 1602
- Phipps, R. H., Grandison, A. S., Jones, A. K., Juniper, D. T., Ramos-Morales, E. and Bertin, G.
Selenium supplementation of lactating dairy cows: effects on milk production and total selenium content and speciation in blood, milk and cheese 1610

Physiology and functional biology of systems

- Renaudeau, D., Kerdoncuff, M., Anaïs, C. and Gourdine, J. L.
Effect of temperature level on thermal acclimation in Large White growing pigs 1619
- Bianospino, E., Moura, A. S. A. M. T., Wechsler, F. S., Fernandes, S. and Dal-Pai-Silva, M.
Age-related changes in muscle fiber type frequencies and cross-sectional areas in straightbred and crossbred rabbits 1627
- Quiniou, N., Richard, S., Mourot, J. and Etienne, M.
Effect of dietary fat or starch supply during gestation and/or lactation on the performance of sows, piglets' survival and on the performance of progeny after weaning 1633

Behaviour, welfare and health

- Wells, A. E. D. and Blache, D.
Horses do not exhibit motor bias when their balance is challenged 1645
- Lewczuk, D.
Young horse response on changing distance in free jumping combination 1651
- Leterrier, C., Vallée, C., Constantin, P., Chagneau, A. M., Lessire, M., Lescoat, P., Berri, C., Baéza, E., Bizeray, D. and Bouvarel, I.
Sequential feeding with variations in energy and protein levels improves gait score in meat-type chickens 1658
- Gerritzen, M. A., Kluivers-Poodt, M., Reimert, H. G. M., Hindle, V. and Lambooj, E.
Castration of piglets under CO₂-gas anaesthesia 1666
- Bouvarel, I., Vallée, C., Chagneau, A. M., Constantin, P., Lescoat, P., Ferreira, G. and Leterrier, C.
Effects of various energy and protein levels during sequential feeding on feed preferences in meat-type chickens 1674
- Mialon, M. M., Martin, C., Garcia, F., Menassol, J. B., Dubroeuq, H., Veissier, I. and Micol, D.
Effects of the forage-to-concentrate ratio of the diet on feeding behaviour in young Blond d'Aquitaine bulls 1682

Farming systems and environment

- Hernández-Jover, M., Schembri, N., Toribio, J.-A. L. M. L. and Holyoake, P. K.
Biosecurity risks associated with current identification practices of producers trading live pigs at livestock sales 1692

Product quality, human health and well-being

- Muchenje, V., Dzama, K., Chimonyo, M., Strydom, P. E., Hugo, A. and Raats, J. G.
Sensory evaluation and its relationship to physical meat quality attributes of beef from Nguni and Bonsmara steers raised on natural pasture 1700
- Pauly, C., Spring, P., O'Doherty, J. V., Ampuero Kragten, S. and Bee, G.
Performances, meat quality and boar taint of castrates and entire male pigs fed a standard and a raw potato starch-enriched diet 1707

Cambridge Journals Online

For further information about this journal please go to the journal web site at:
journals.cambridge.org/anm

