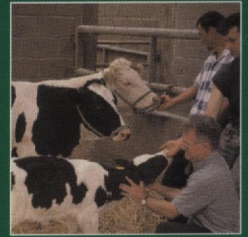
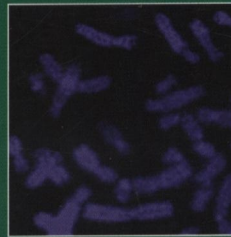
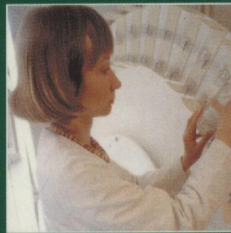


ISSN 1751-7311

VOLUME 3



# animal

AN INTERNATIONAL JOURNAL OF ANIMAL BIOSCIENCE



animal

CAMBRIDGE  
UNIVERSITY PRESS



## CONTENTS

### Breeding and genetics

Zhang, J., Sun, D. X., Womack, J. E., Wang, Y. C., Yu, Y., Liu, R. and Zhang, Y.  
Polymorphism identification, RH mapping and association of placental lactogen gene with milk production traits of dairy cows 1

Teegen, R., Edel, C. and Thaller, G.  
Population structure of the Trakehner Horse breed 6

Baruch, E. and Weller, J. I.  
Incorporation of genotype effects into animal model evaluations when only a small fraction of the population has been genotyped 16

### Nutrition

Gahan, D. A., Lynch, M. B., Callan, J. J., O'Sullivan, J. T. and O'Doherty, J. V.  
Performance of weanling piglets offered low-, medium- or high-lactose diets supplemented with a seaweed extract from *Laminaria* spp. 24

Liu, Q., Wang, C., Yang, W. Z., Dong, Q., Dong, K. H., Huang, Y. X., Yang, X. M. and He, D. C.  
Effects of malic acid on rumen fermentation, urinary excretion of purine derivatives and feed digestibility in steers 32

### Physiology and functional biology of systems

Harvatine, K. J., Boisclair, Y. R. and Bauman, D. E.  
Recent advances in the regulation of milk fat synthesis (review) 40

Laissue, P., L'Hôte, D., Serres, C. and Vaiman, D.  
Mouse models for identifying genes modulating fertility parameters (review) 55

Barros, K. M. F. T., Manhaes-de-Castro, R., Goubel, F. and Canon, F.  
Differential adaptations during growth spurt and in young adult rat muscles 72

Zarazaga, L. A., Guzmán, J. L., Domínguez, C., Pérez, M. C., Prieto, R. and Sánchez, J.  
Nutrition level and season of birth do not modify puberty of Payoya goat kids 79

### Behaviour, welfare and health

Flower, F. C. and Weary, D. M.  
Gait assessment in dairy cattle (review) 87

Olmos, G., Boyle, L., Horan, B., Berry, D. P., O'Connor, P., Mee, J. F. and Hanlon, A.  
Effect of genetic group and feed system on locomotion score, clinical lameness and hoof disorders of pasture-based Holstein-Friesian cows 96

Blanco, M., Casasús, I. and Palacio, J.  
Effect of age at weaning on the physiological stress response and temperament of two beef cattle breeds 108

Couret, D., Otten, W., Puppe, B., Prunier, A. and Merlot, E.  
Behavioural, endocrine and immune responses to repeated social stress in pregnant gilts 118

Lensink, B. J., Leruste, H., Le Roux, T. and Bizeray-Filoché, D.  
Relationship between the behaviour of sows at 6 months old and the behaviour and performance at farrowing 128

Ginane, C., Baumont, R. and Duncan, A. J.  
Diet learning through post-ingestive consequences in sheep: the case of starch and casein variously combined in the same foods 135

### Farming systems and environment

Keady, T. W. J. and Hanrahan, J. P.  
Effects of shearing at housing, grass silage feed value and extended grazing herbage allowance on ewe and subsequent lamb performance 143

García-Martínez, A., Olaizola, A. and Bernués, A.  
Trajectories of evolution and drivers of change in European mountain cattle farming systems 152

### Product quality, human health and well-being

Gerber, N., Brogioli, R., Hattendorf, B., Scheeder, M. R. L., Wenk, C. and Günther, D.  
Variability of selected trace elements of different meat cuts determined by ICP-MS and DR-ICPMS 166

Mitchell, A. D.  
Effect of ractopamine on growth and body composition of pigs during compensatory growth 173

### Cambridge Journals Online

For further information about this journal please go to the journal web site at:  
[journals.cambridge.org/anm](http://journals.cambridge.org/anm)

