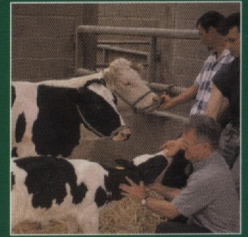
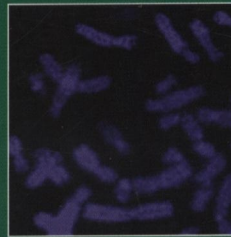
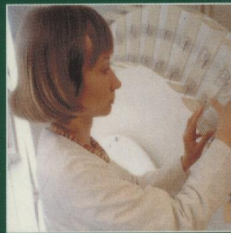


ISSN 1751-7311

VOLUME 3



animal

AN INTERNATIONAL JOURNAL OF ANIMAL BIOSCIENCE



animal

CAMBRIDGE
UNIVERSITY PRESS

CONTENTS

Breeding and genetics

- Hüttmann, H., Stamer, E., Junge, W., Thaller, G. and Kalm, E.*
Analysis of feed intake and energy balance of high-yielding first lactating Holstein cows with fixed and random regression models 181
- Macfarlane, J. M., Lambe, N. R., Bishop, S. C., Matika, O., Rius-Vilarrasa, E., McLean, K. A., Haresign, W., Wolf, B. T., McLaren, R. J. and Bünger, L.*
Effects of the Texel muscling quantitative trait locus on carcass traits in crossbred lambs 189

Nutrition

- Froidmont, E., Wathelet, B., Oger, R., Romnée, J. M., Colinet, A., Cloet, D., Didelez, M., Pichon, J. C., Boudry, C., Jean, G. and Bartiaux-Thill, N.*
Nutritional properties of potato protein concentrate compared with soybean meal as the main protein source in feed for the double-muscling Belgian Blue bull 200
- Haldar, S., Mondal, S., Samanta, S. and Ghosh, T. K.*
Effects of dietary chromium supplementation on glucose tolerance and primary antibody response against *peste des petits ruminants* in dwarf Bengal goats (*Capra hircus*) 209
- Teimouri Yansari, A. and Primohammadi, R.*
Effect of particle size of alfalfa hay and reconstitution with water on intake, digestion and milk production in Holstein dairy cows 218

- Martínez-Ramírez, H. R., Jeaurond, E. A. and de Lange, C. F. M.*
Nutrition-induced differences in body composition, compensatory growth and endocrine status in growing pigs 228

Physiology and functional biology of systems

- Eadmusik, S., Molette, C., Rémignon, H. and Fernandez, X.*
Different rates of glycolysis affect glycolytic activities and protein properties in turkey breast muscle 237
- Jurie, C., Picard, B., Heyman, Y., Cassar-Malek, I., Chavatte-Palmer, P., Richard, C. and Hocquette, J. F.*
Comparison of cloned and non-cloned Holstein heifers in muscle contractile and metabolic characteristics 244
- Patton, J., Murphy, J. J., O'Mara, F. P. and Butler, S. T.*
Responses of North American and New Zealand strains of Holstein-Friesian dairy cattle to homeostatic challenges during early and mid-lactation 251

- Prasad, S. K., Qureshi, T. N. and Qureshi, S.*
Mucuna pruriens seed powder feeding influences reproductive conditions and development in Japanese quail *Coturnix coturnix japonica* 261
- Fantinati, P., Zannoni, A., Bernardini, C., Forni, M., Tattini, A., Seren, E. and Bacci, M. L.*
Evaluation of swine fertilisation medium (SFM) efficiency in preserving spermatozoa quality during long-term storage in comparison to four commercial swine extenders 269

- Romański, K. W.*
Cholecystokinin-dependent selective inhibitory effect on 'minute rhythm' in the ovine small intestine 275

Behaviour, welfare and health

- Burden, F. A., Gallagher, J., Thiemann, A. K. and Trawford, A. F.*
Necropsy survey of gastric ulcers in a population of aged donkeys: prevalence, lesion description and risk factors 287
- Terrazas, A., Robledo, V., Serafin, N., Soto, R., Hernández, H. and Poindron, P.*
Differential effects of undernutrition during pregnancy on the behaviour of does and their kids at parturition and on the establishment of mutual recognition 294

Farming systems and environment

- Tolkamp, B. J. and Kyriazakis, I.*
Toward a new practical energy evaluation system for dairy cows 307
- Hagnestam-Nielsen, C. and Østergaard, S.*
Economic impact of clinical mastitis in a dairy herd assessed by stochastic simulation using different methods to model yield losses 315

