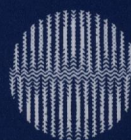
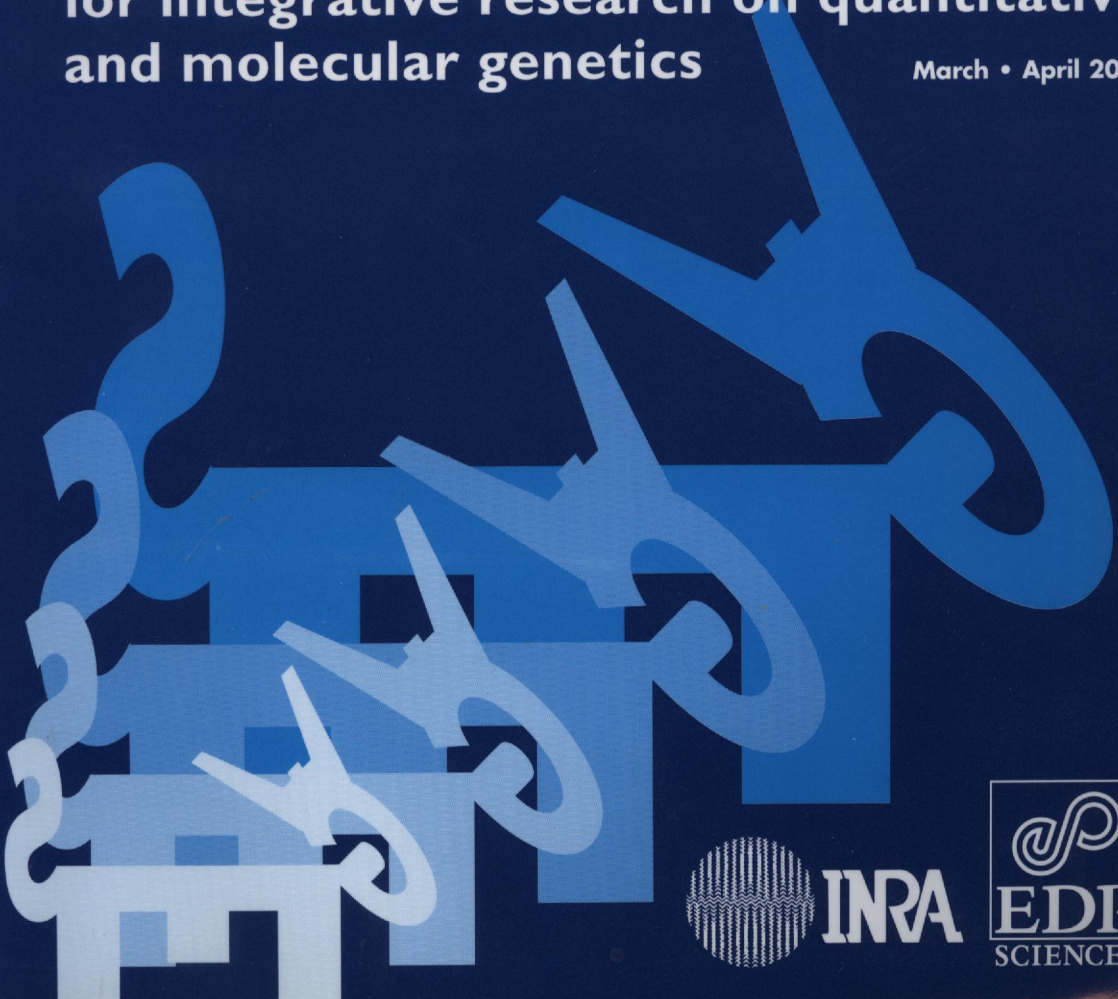


GSE

**Genetics
Selection
Evolution**

**for integrative research on quantitative
and molecular genetics**

March • April 2004



INRA



GSE

CONTENTS

Volume 36 • N° 2 • March/April 2004

- The efficiency of designs for fine-mapping of quantitative trait loci using combined linkage disequilibrium and linkage
S.H. LEE, J.H.J. VAN DER WERF..... 145
- Quantitative trait loci mapping in dairy cattle: review and meta-analysis
M.S. KHATKAR, P.C. THOMSON, I. TAMMEN, H.W. RAADSMA..... 163
- Bootstrapping of gene-expression data improves and controls the false discovery rate of differentially expressed genes
T.H.E. MEUWISSEN, M.E. GODDARD..... 191
- Genetic variability of the pattern of night melatonin blood levels in relation to coat changes development in rabbits
D. ALLAIN, B. MALPAUX, F. PUECHAL, R.G. THÉBAULT, H. DE ROCHAMBEAU, P. CHEMINEAU..... 207
- A short-term divergent selection for resistance to *Teladorsagia circumcincta* in Romanov sheep using natural or artificial challenge
L. GRUNER, J. BOUIX, J. VU TIEN KHANG, N. MANDONNET, F. EYCHENNE, J. CORTET, C. SAUVÉ, C. LIMOUZIN..... 217
- Geographic distribution of haplotype diversity at the bovine casein locus
O.C. JANN, E.M. IBEAGHA-AWEMU, C. ÖZBEYAZ, P. ZARAGOZA, J.L. WILLIAMS, P. AJMONE-MARSAN, J.A. LENSTRA, K. MOAZAMI-GOUDARZI, G. ERHARDT..... 243

Abstracted/Indexed in: Agris, Bibliography of Agriculture, Biological Abstracts/Biosis, CABS (Current Awareness in Biological Sciences), Chemical Abstracts, CNRS/Pascal, Current Contents (Agriculture), Food Science and Technology Abstracts, Genetic Abstracts, GEOBASE, MEDLINE, Science Citation Index.

www.edpsciences.org

