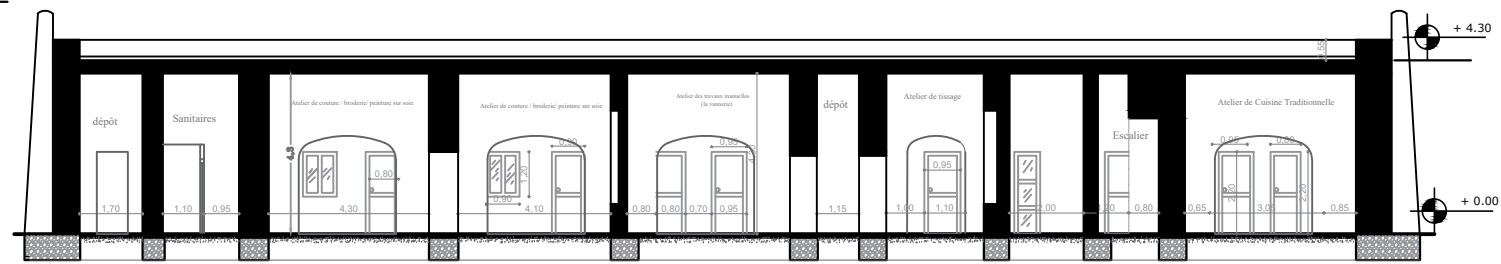
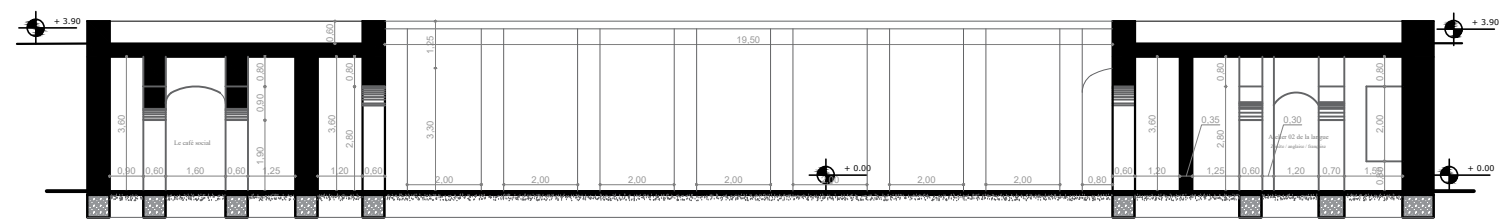


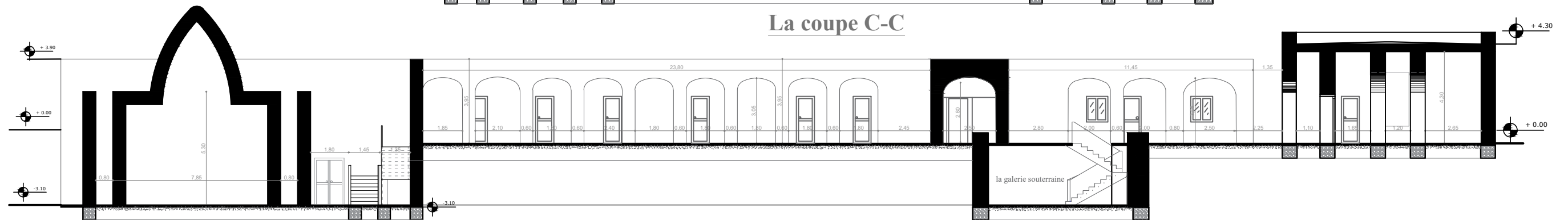
La coupe A-A



La coupe B-B



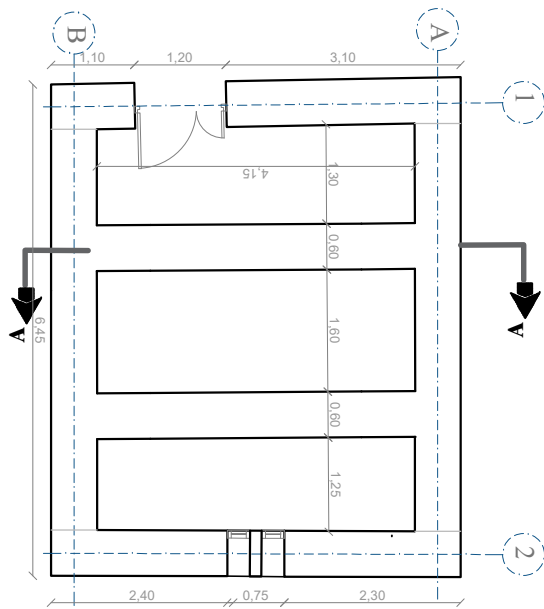
La coupe C-C



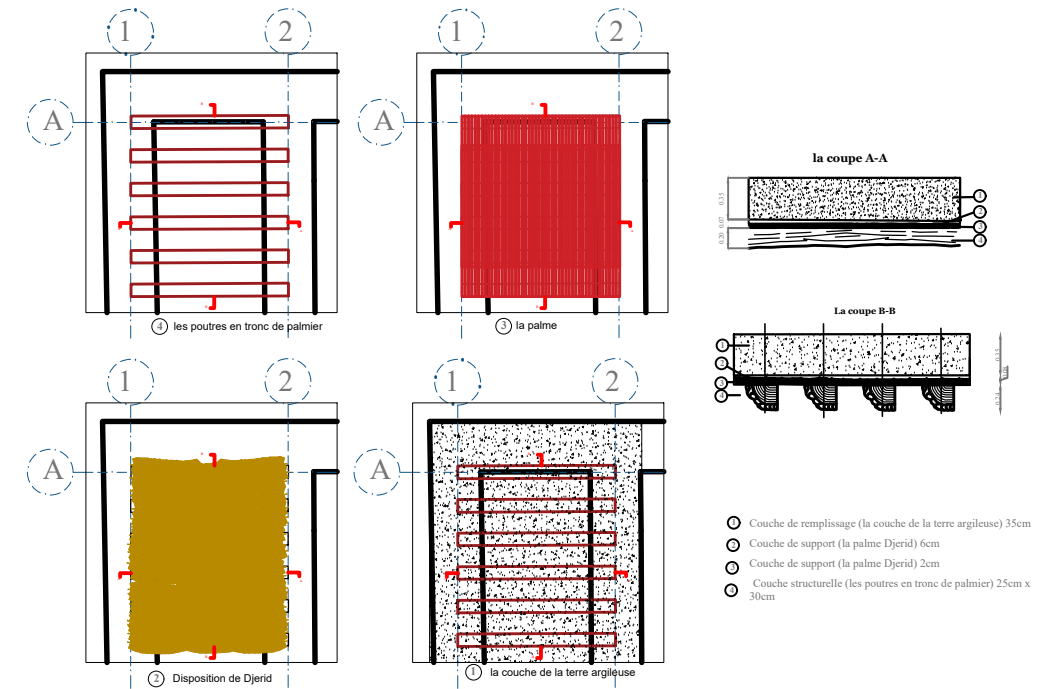
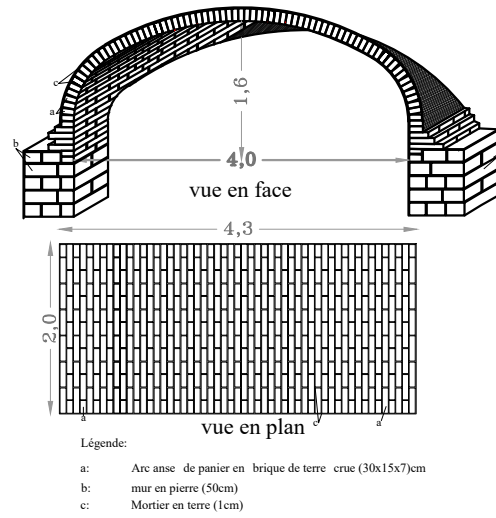
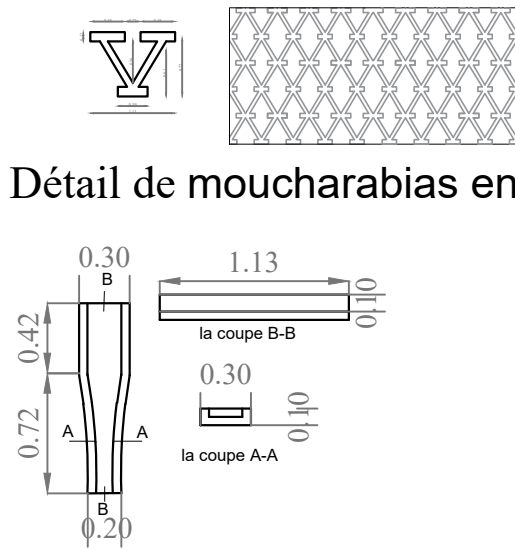
La coupe D-D



Les Coupes



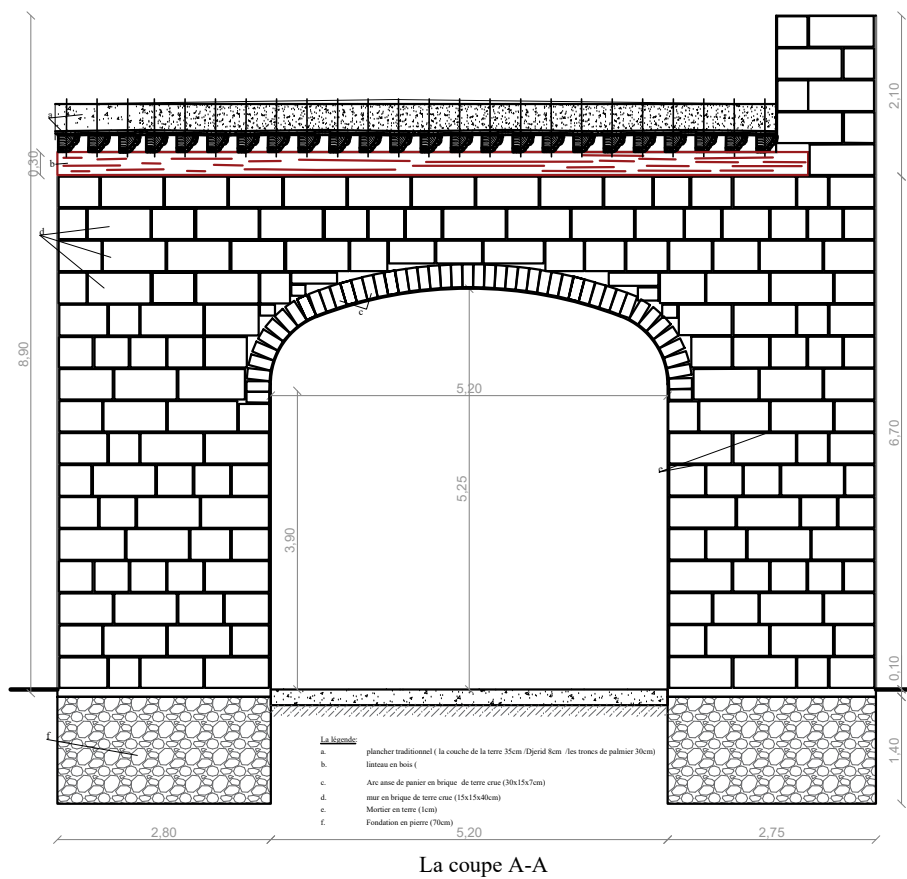
Détail de moucharabias en bois



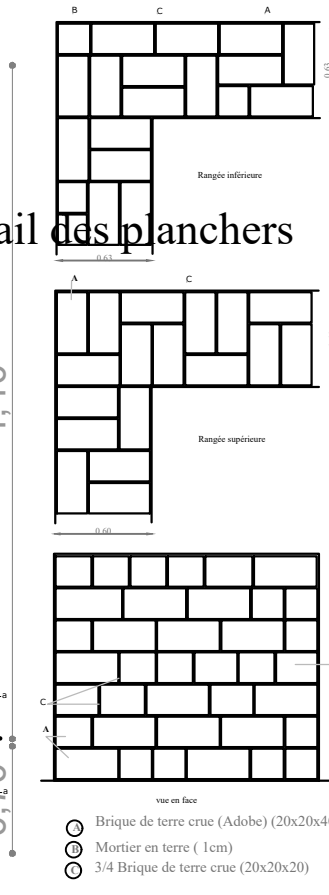
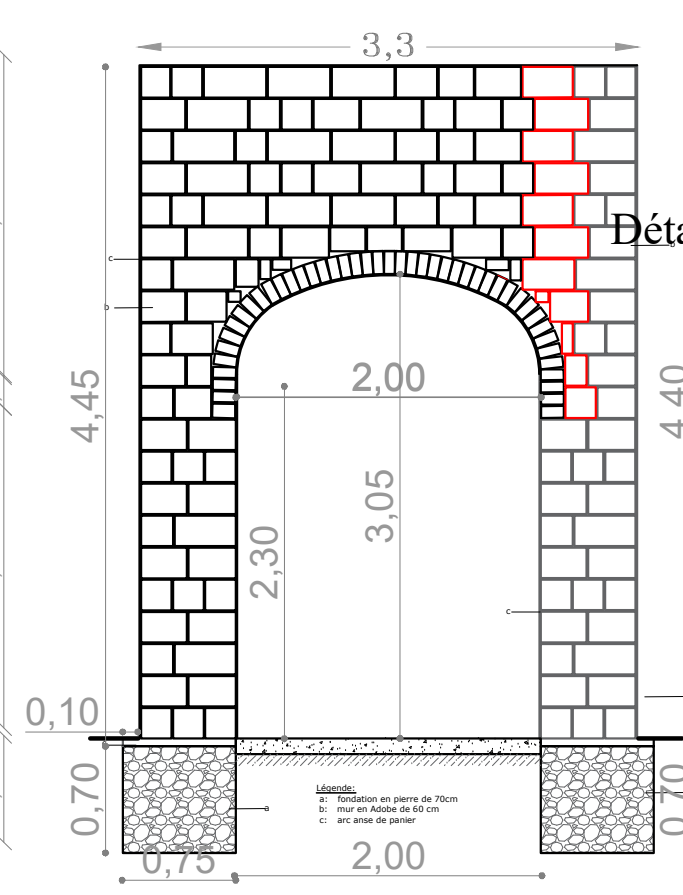
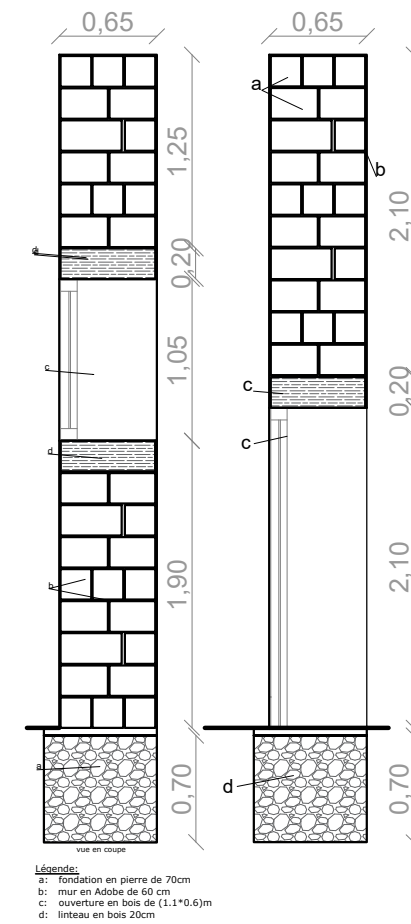
plans de coffrage une pièce

Détail des gargouilles en terre cuite

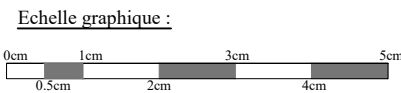
Détail d'appareillages la voûte nubienne

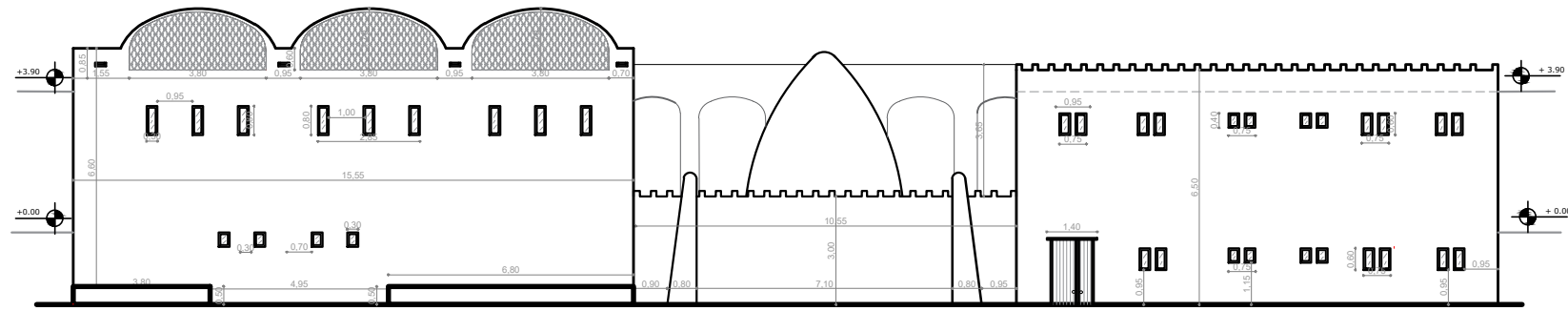


Détail d'appareillages d'arc et de mur

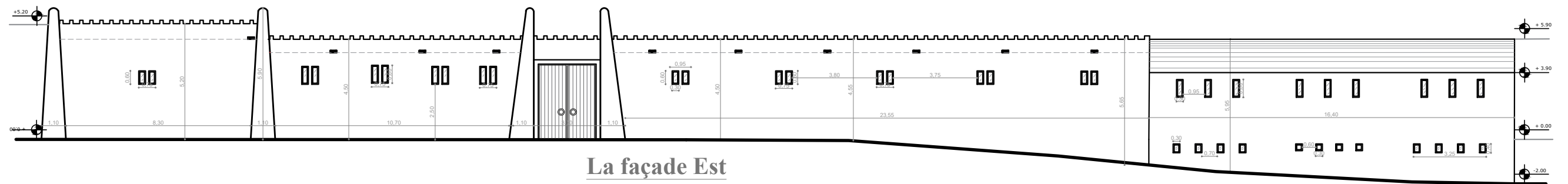


Détail des planchers

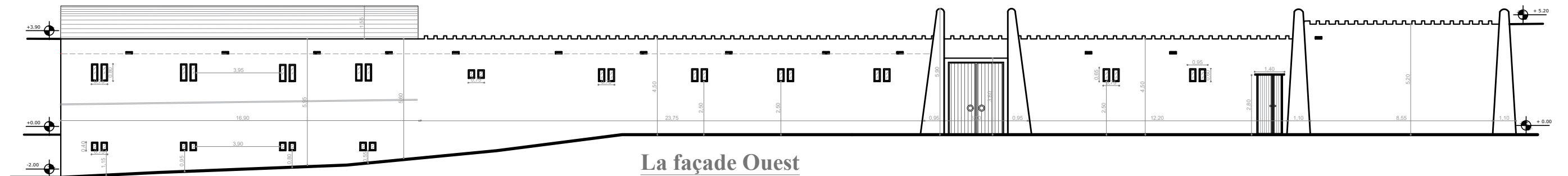




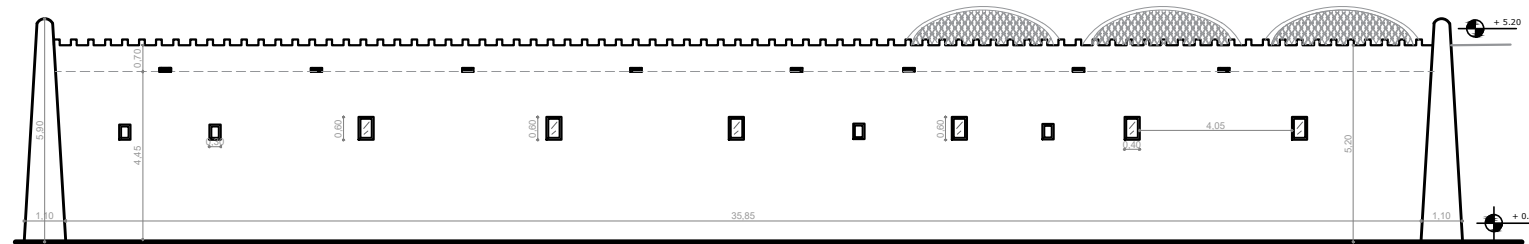
La façade Nord



La façade Est



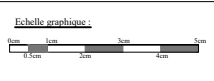
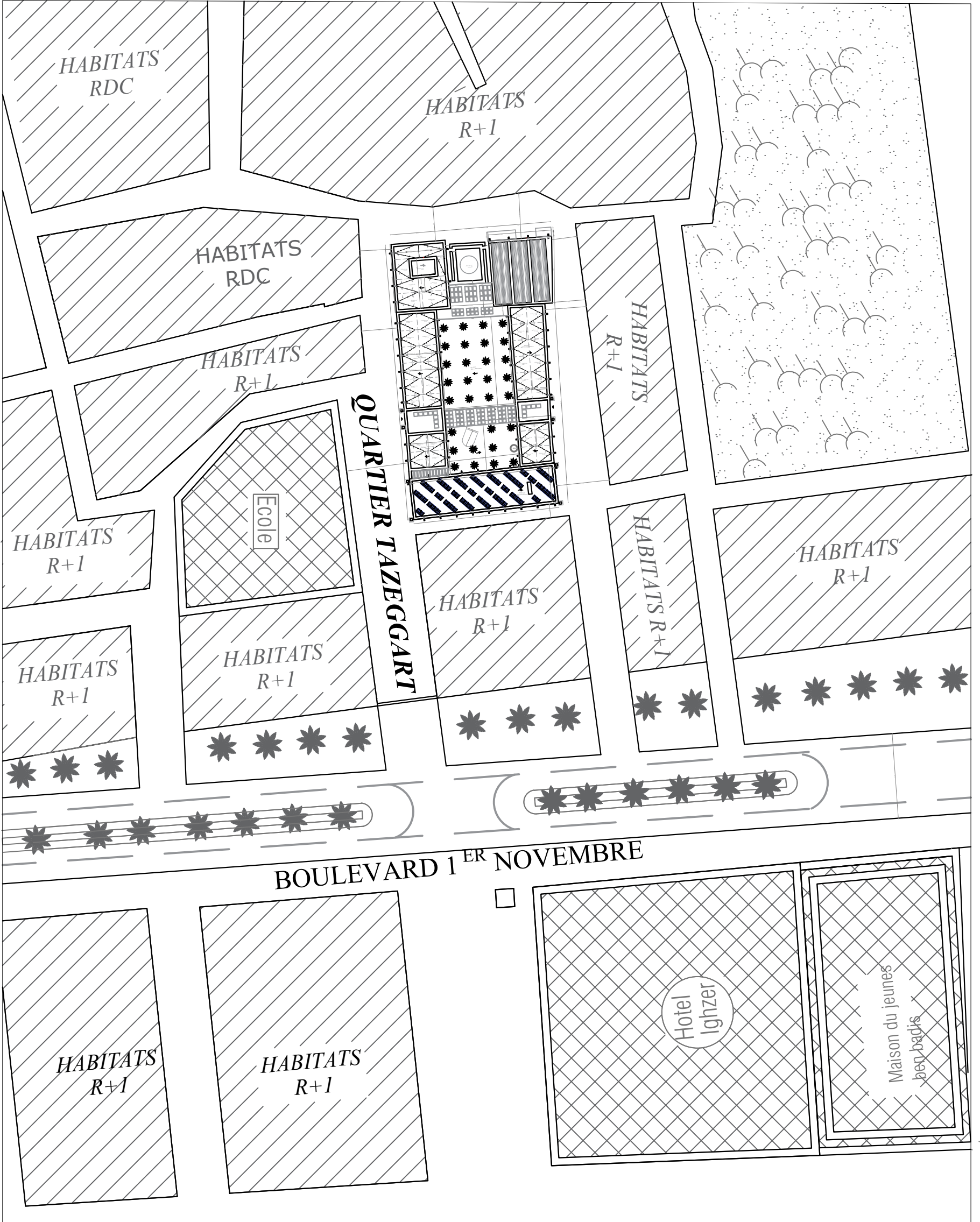
La façade Ouest



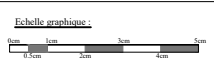
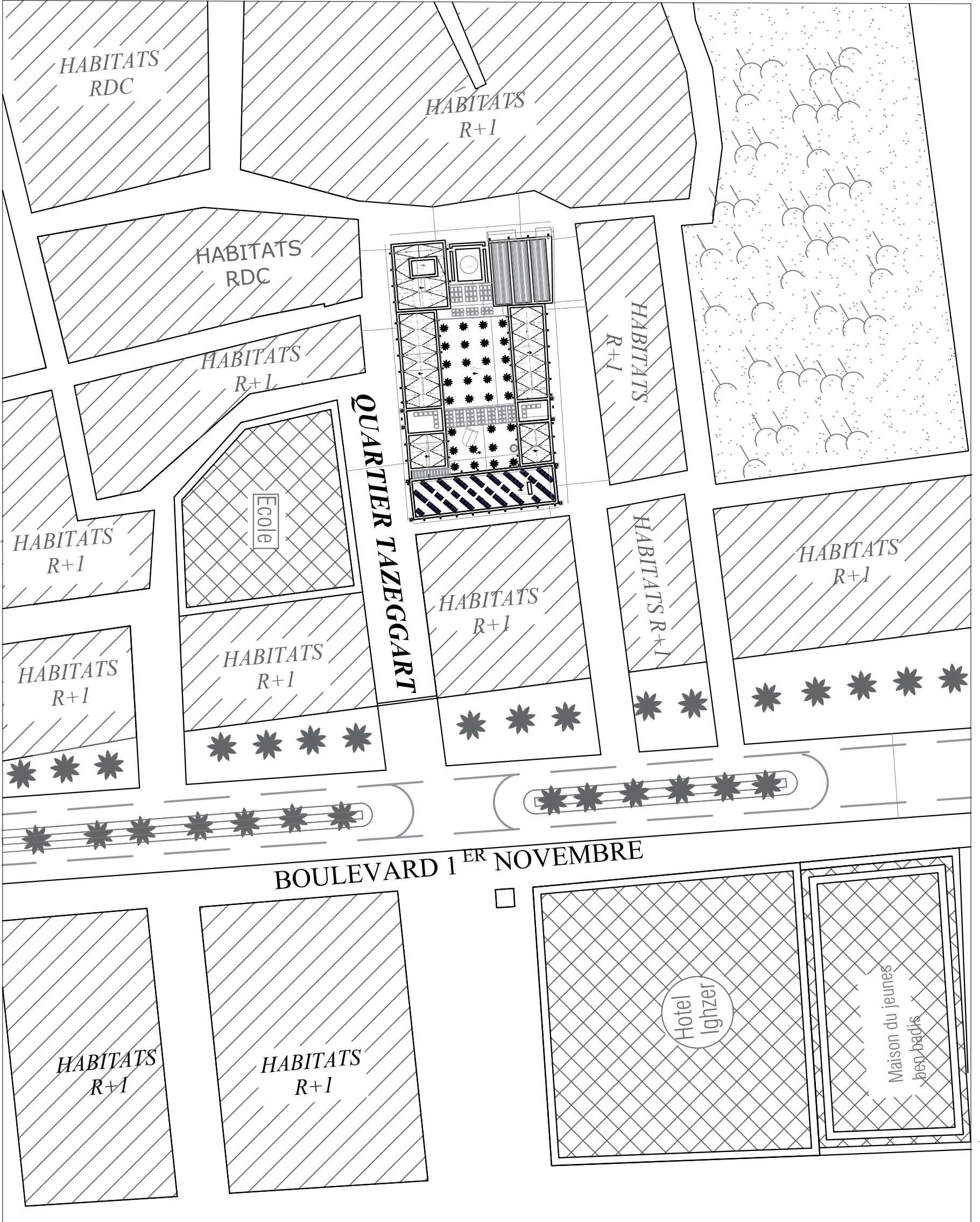
La façade Sud

Les Façades

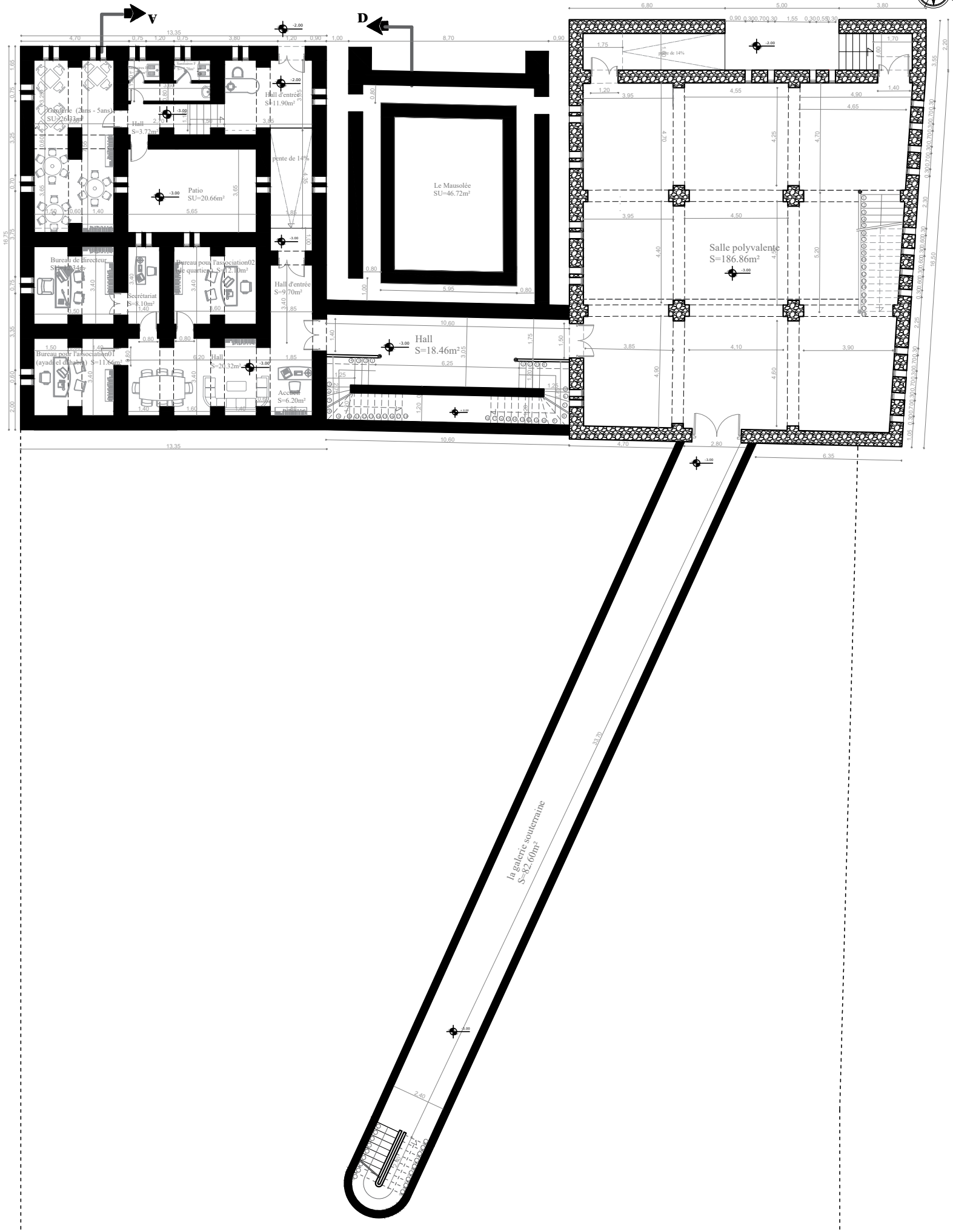




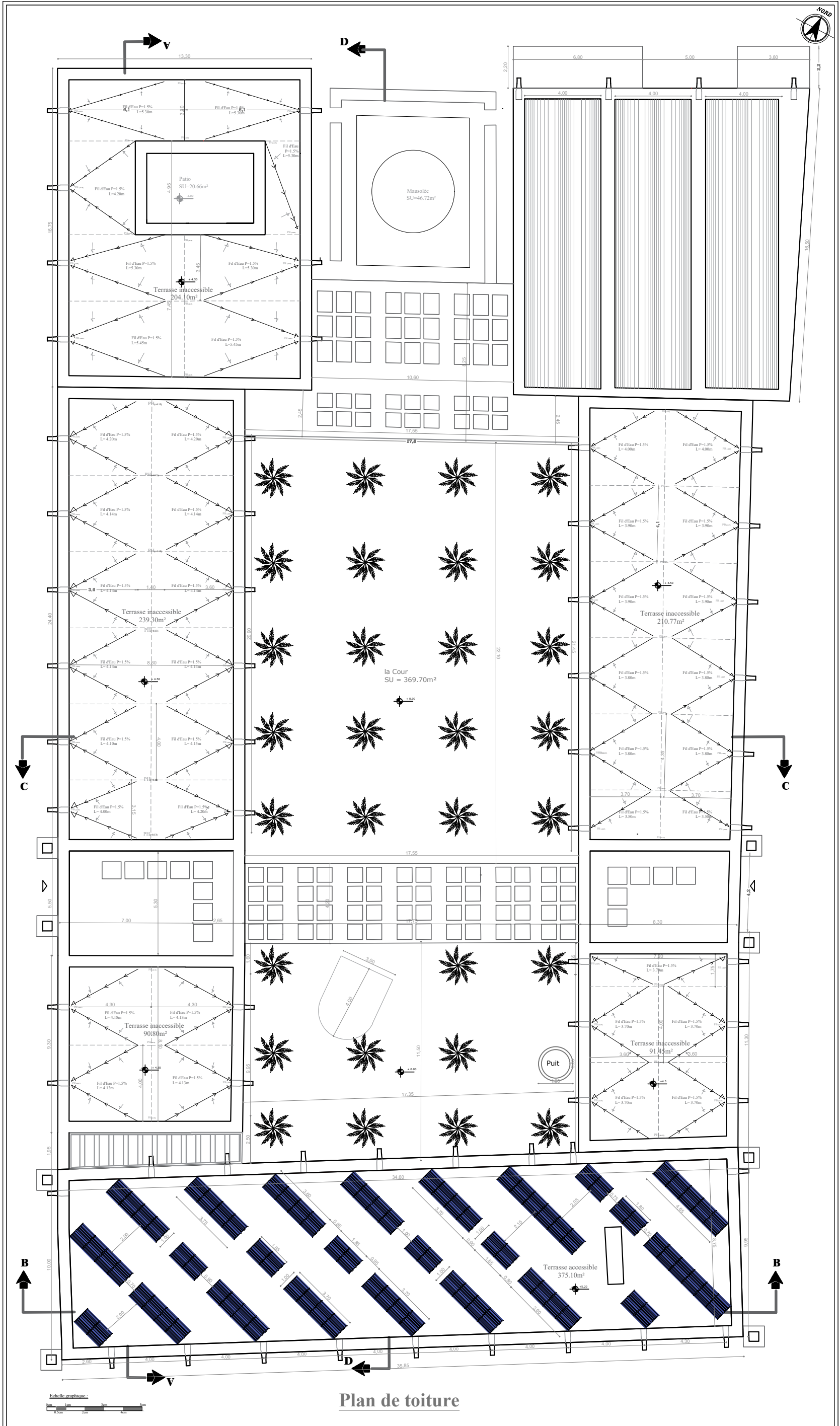
Plan de Masse

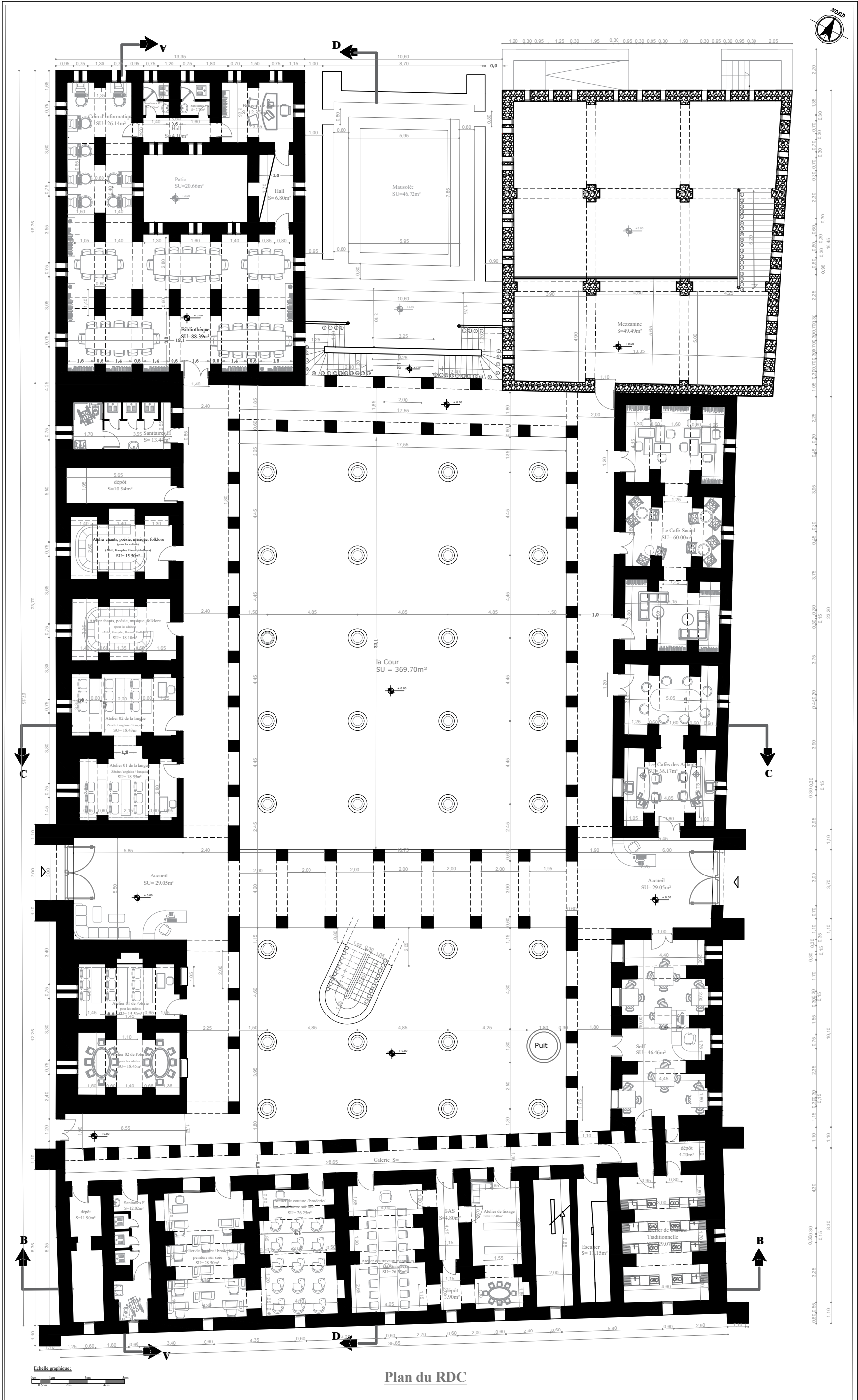


Plan de Masse

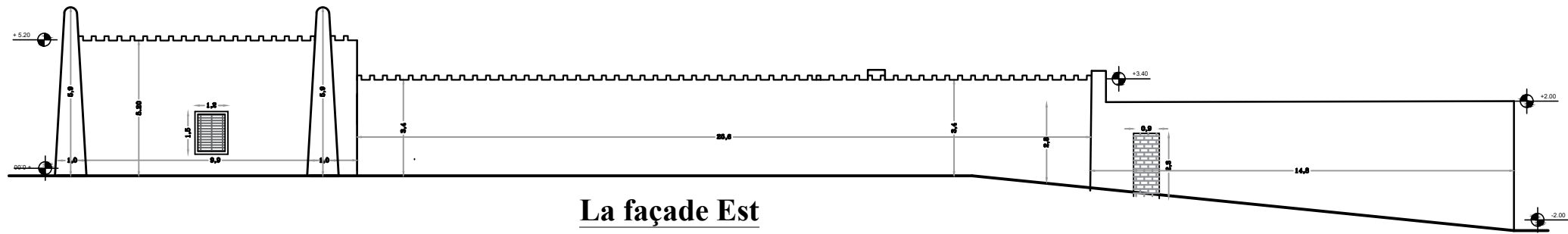


Plan de Sous-Sol

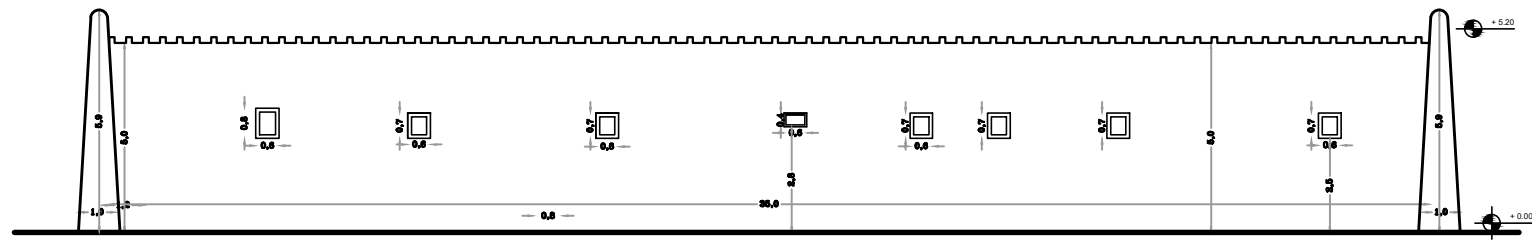




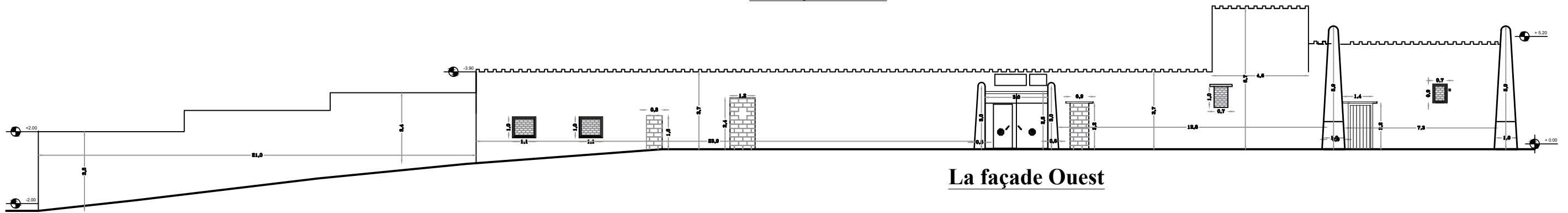
Plan du RDC



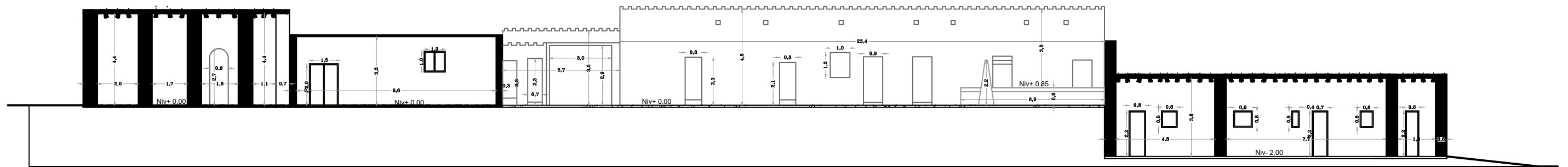
La façade Est



La façade Sud



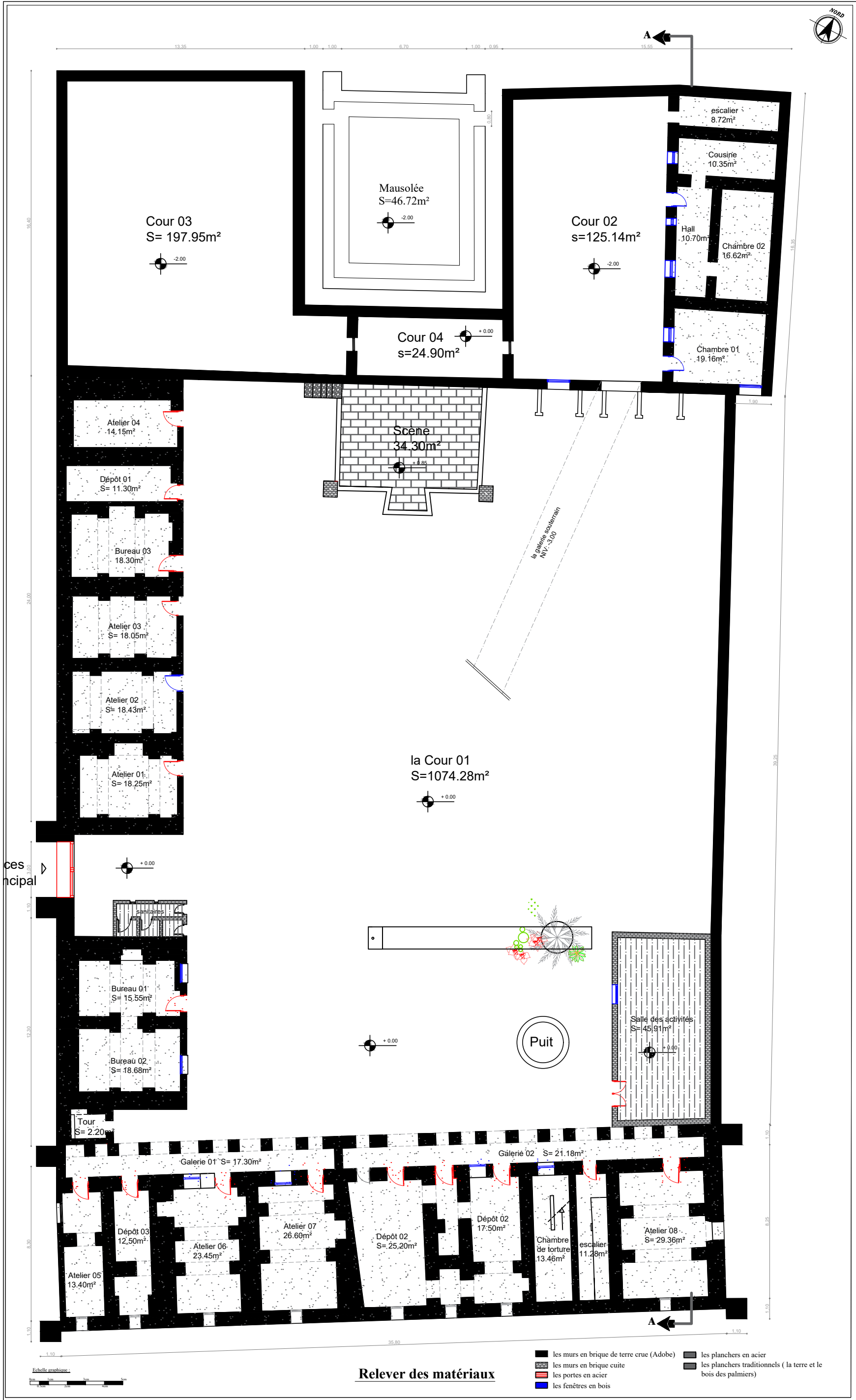
La façade Ouest

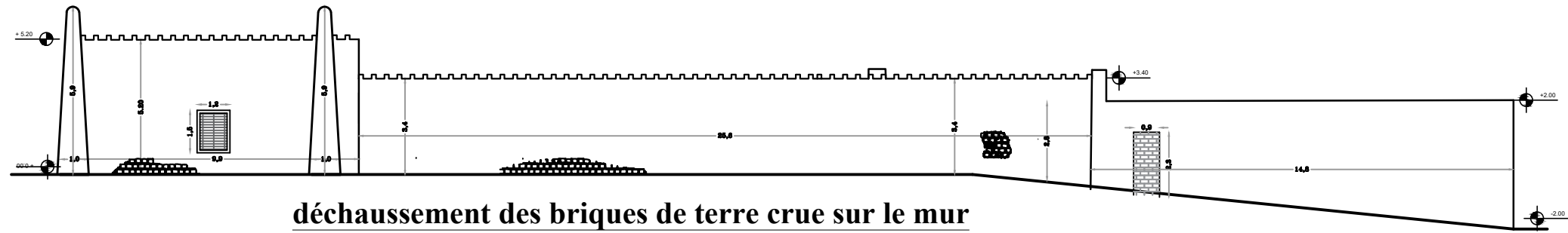


La coupe A-A

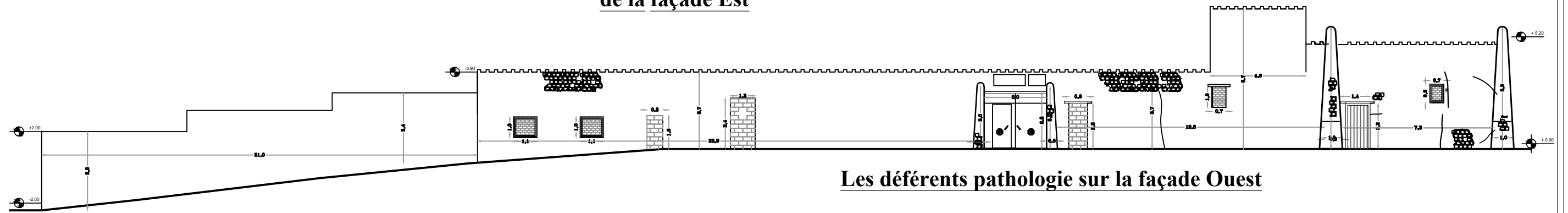
Le relevé métrique des Façades



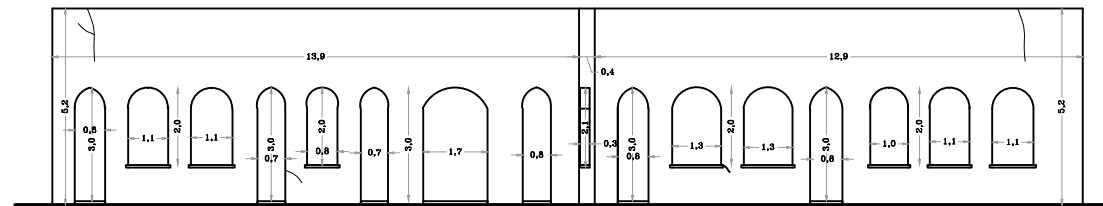




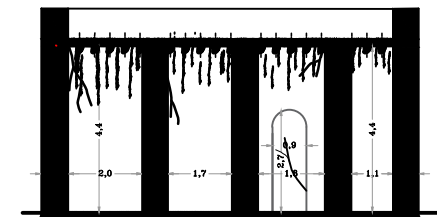
déchaussement des briques de terre crue sur le mur de la façade Est



Les différents pathologie sur la façade Ouest



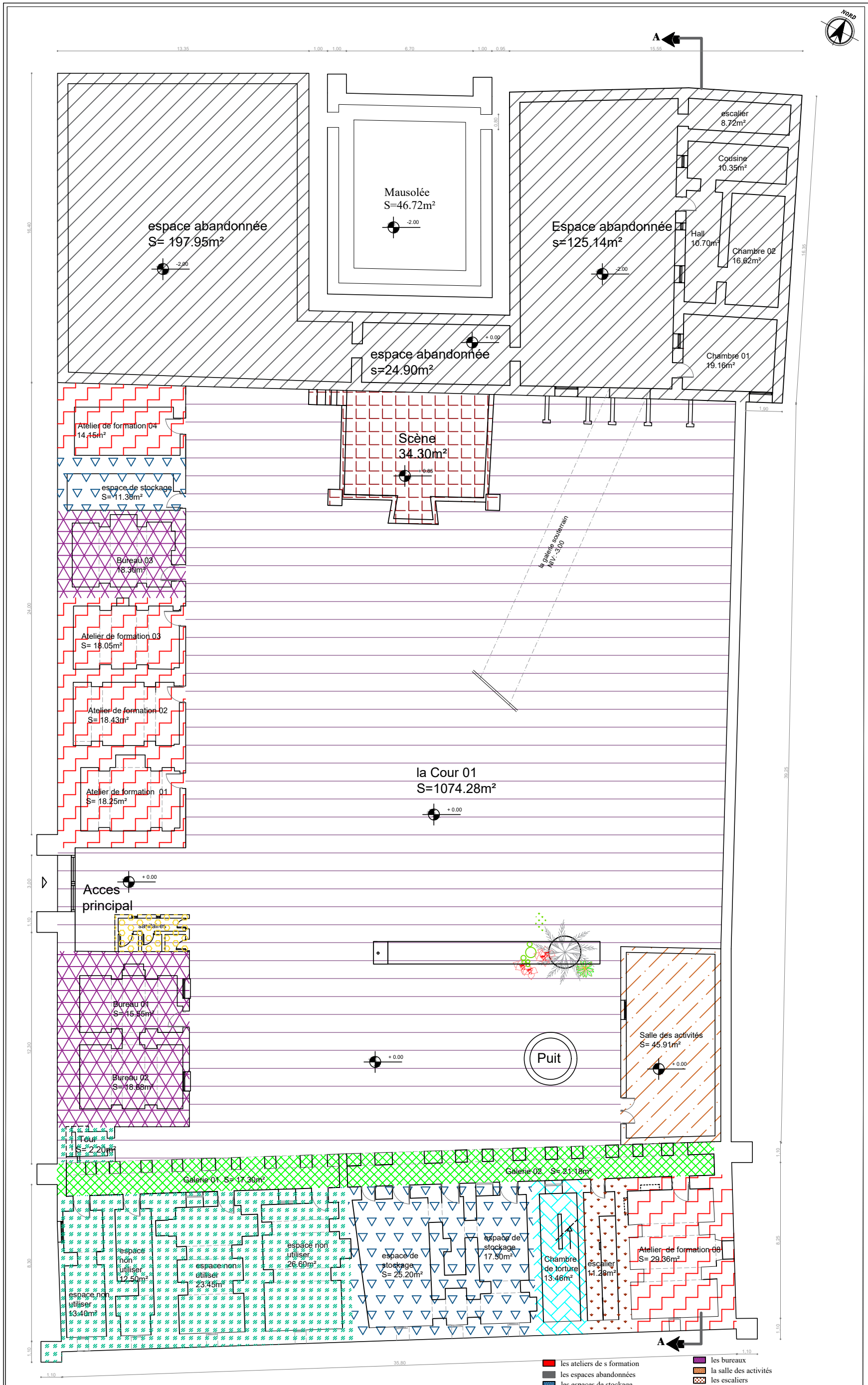
Les différents pathologie sur les façades intérieures



Les différents pathologie sur les murs intérieurs des pièces

Le relever des pathologies

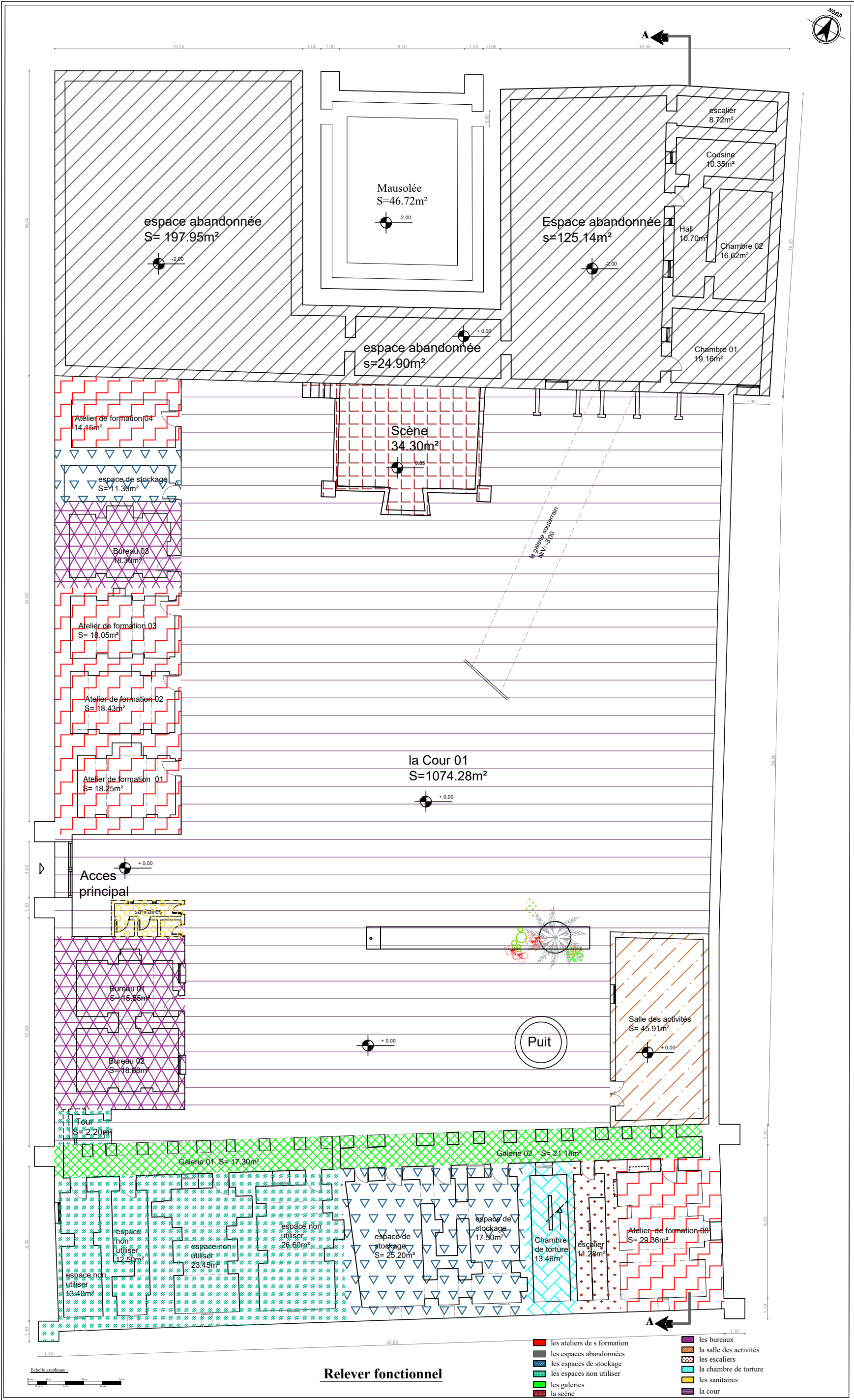




- les ateliers de s formation
- les espaces abandonnés
- les espaces de stockage
- les espaces non utiliser
- les galeries
- la scène
- les bureaux
- la salle des activités
- les escaliers
- la chambre de torture
- les sanitaires
- la tour

Echelle graphique:

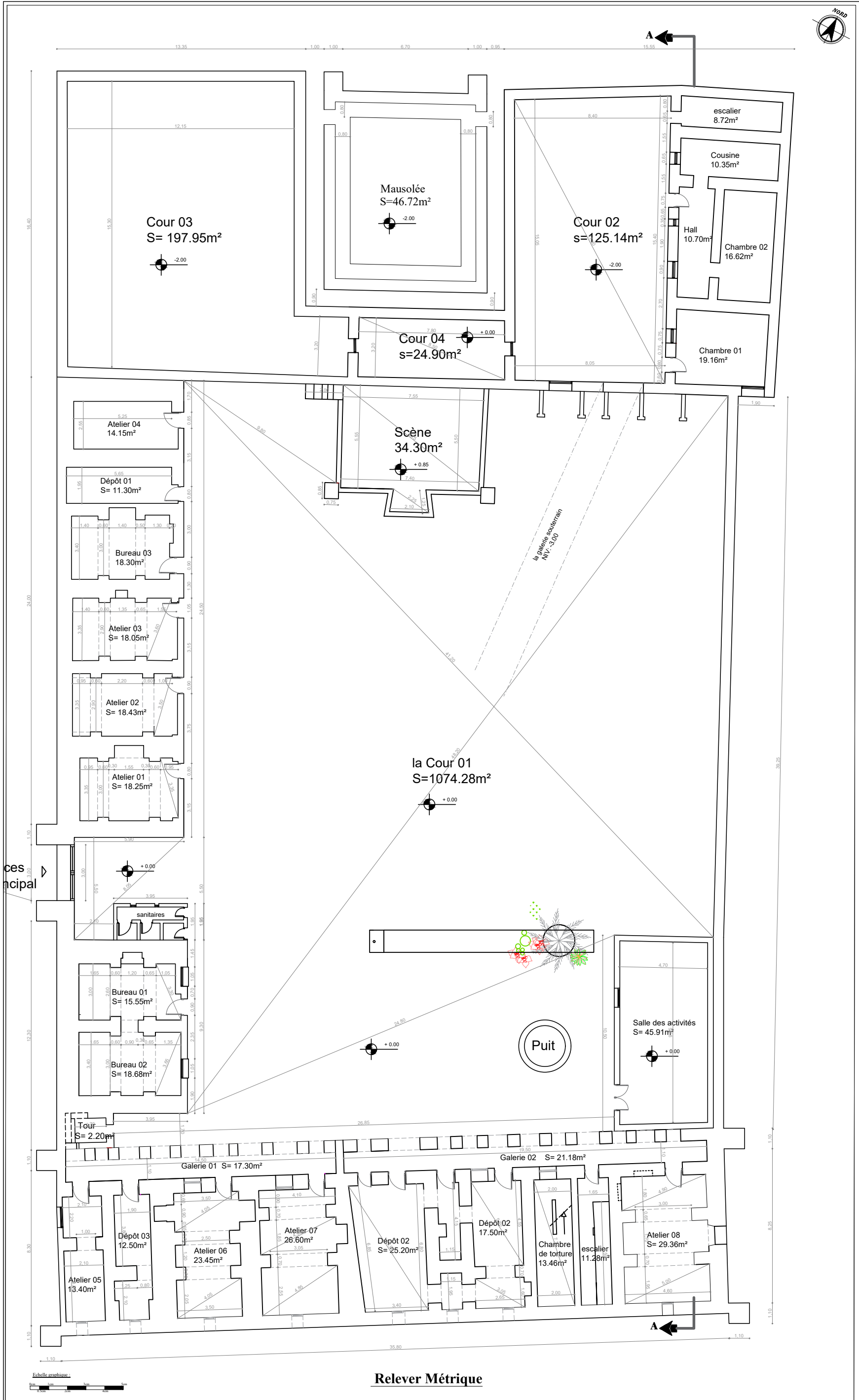
Relever fonctionnel

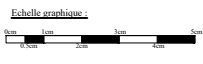
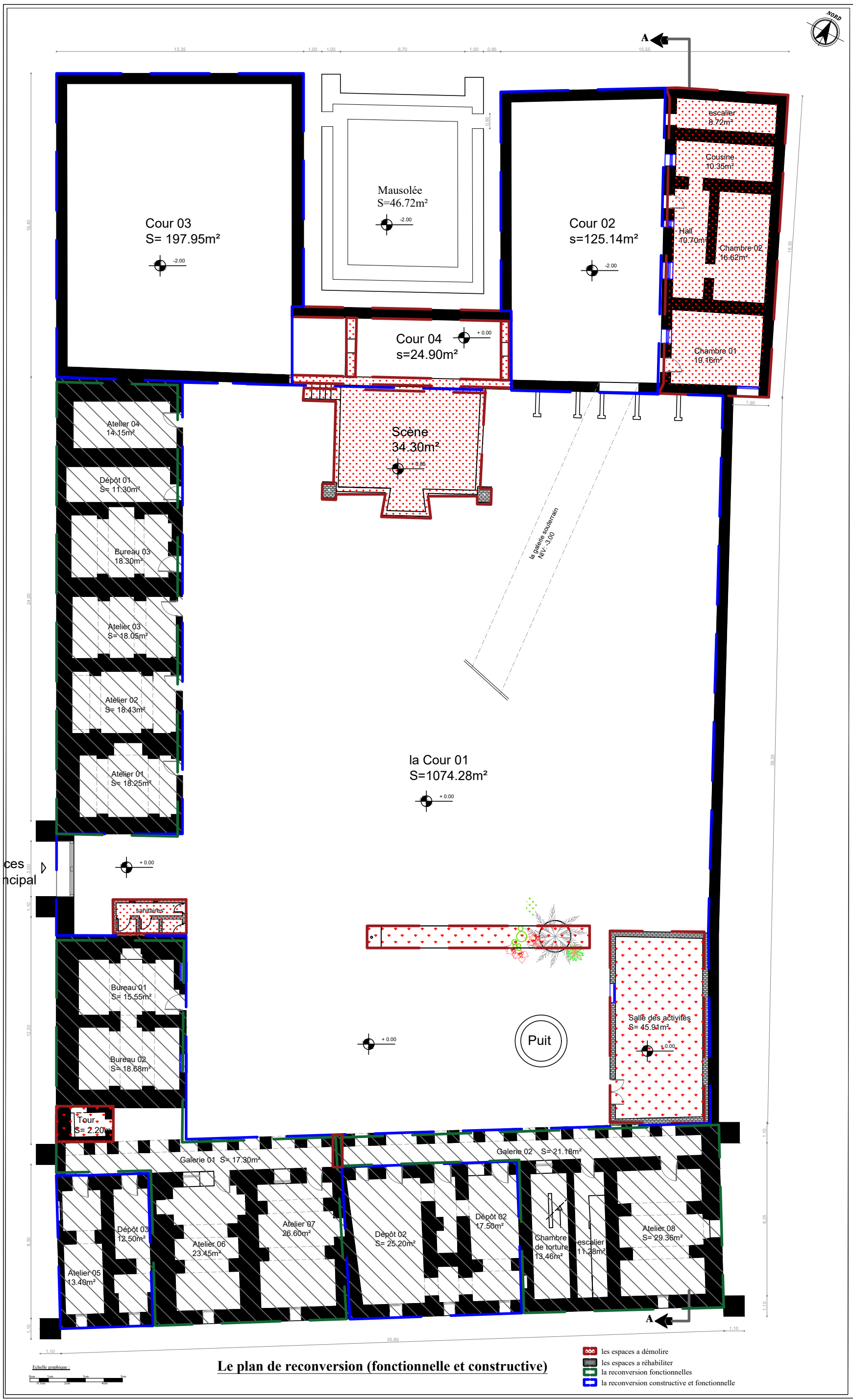


Echelle graphique:
0m 5m 10m

Relever fonctionnel

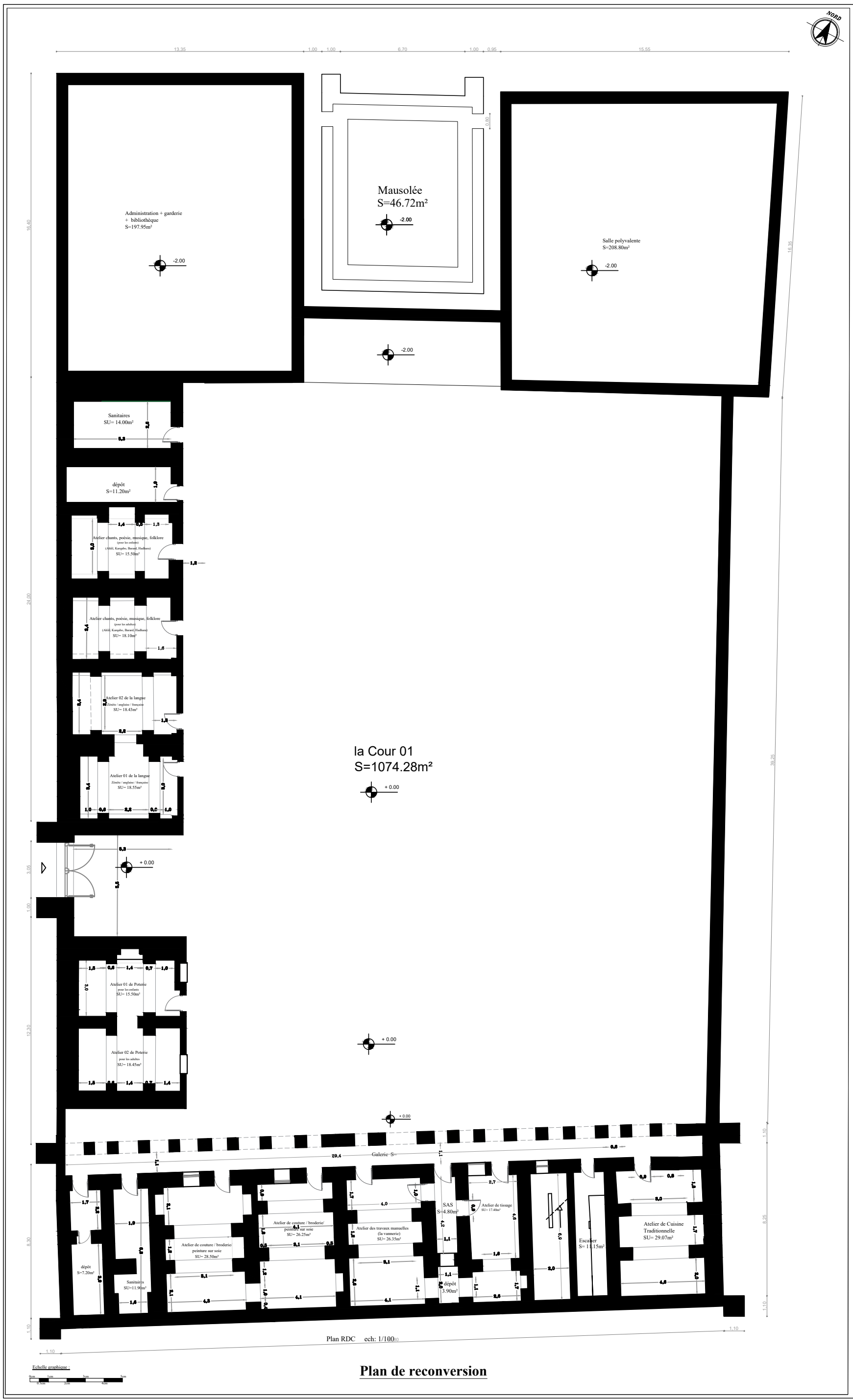
- les ateliers de s formation
- les espaces abandonnés
- les espaces de stockage
- les espaces non utiliser
- les galeries
- la scène
- les bureaux
- la salle des activités
- les escaliers
- la chambre de torture
- les sanitaires
- la cour





Le plan de reconversion (fonctionnelle et constructive)

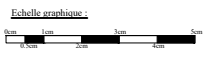
- les espaces à démolir
- les espaces à réhabiliter
- la reconversion fonctionnelles
- la reconversion constructive et fonctionnelle

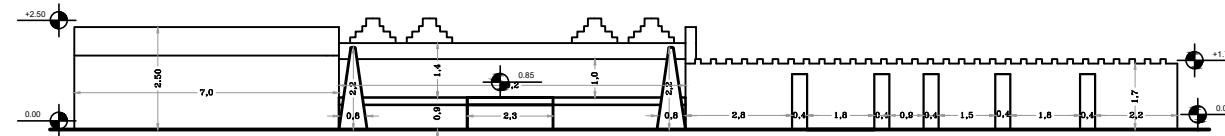


la Cour 01
S=1074.28m²

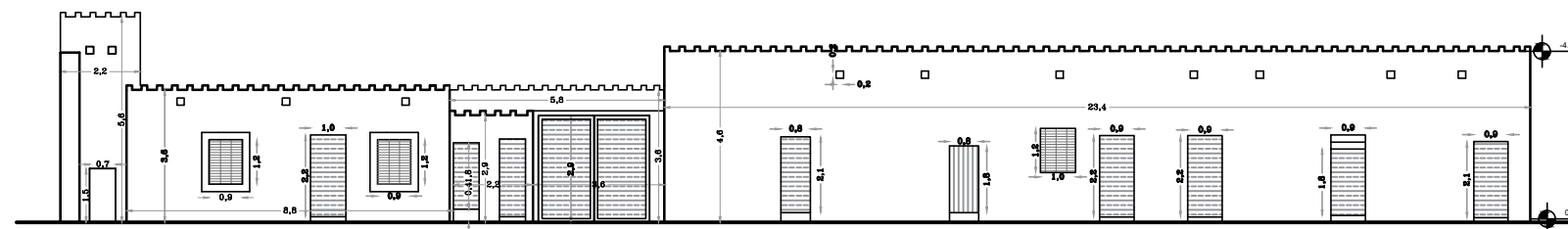
Plan RDC ech: 1/100.0

Plan de reconversion

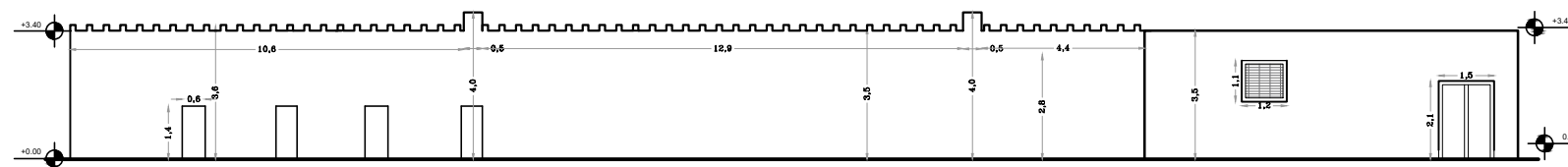




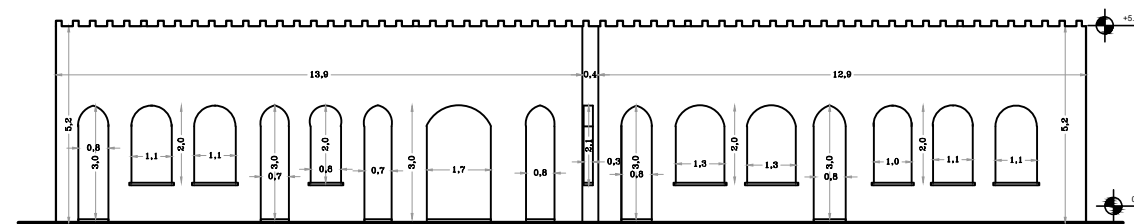
Vue de face (sur la scène)



Vue de gauche (sur l'administration et les ateliers)



Vue de droite (sur la salle des activités)



Vue d'arrière (sur la galerie des arcades)



Le relever métrique des façades intérieures