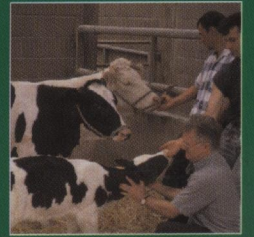
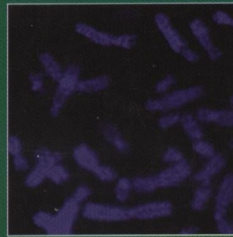


ISSN 1751-7311



animal

AN INTERNATIONAL JOURNAL OF ANIMAL BIOSCIENCE

CAMBRIDGE
UNIVERSITY PRESS



animal

CONTENTS

Breeding and genetics

R. Behl, J. Behl, N. Gupta and S. C. Gupta

Genetic relationships of five Indian horse breeds using microsatellite markers 483

A. B. Doeschl-Wilson, P. W. Knap, B. P. Kinghorn and H. A. M. Van der Steen

Using mechanistic animal growth models to estimate genetic parameters of biological traits 489

Nutrition

I. Schei, A. Danfær, I. A. Boman and H. Volden

Post-ruminal or intravenous infusions of carbohydrates or amino acids to dairy cows 1. Early lactation 501

I. Schei, A. Danfær, L. T. Mydland and H. Volden

Post-ruminal or intravenous infusions of carbohydrates or amino acids to dairy cows 2. Late lactation 515

Z. Volek, M. Marounek and V. Skřivanová

Effect of a starter diet supplementation with mannan-oligosaccharide or inulin on health status, caecal metabolism, digestibility of nutrients and growth of early weaned rabbits 523

R. J. Dewhurst, E. J. Kim, R. T. Evans, A. R. J. Cabrita and A. J. M. Fonseca

Effects of dietary sulphur sources on concentrations of hydrogen sulphide in the rumen head-space gas of dairy cows 531

M. Lourenço, G. Van Ranst, S. De Smet, K. Raes and V. Fievez

Effect of grazing pastures with different botanical composition by lambs on rumen fatty acid metabolism and fatty acid pattern of *longissimus* muscle and subcutaneous fat 537

Physiology and functional biology of systems

E. Gootwine, T. E. Spencer and F. W. Bazer

Litter-size-dependent intrauterine growth restriction in sheep (Review) 547

N. C. Friggens and J. H. Badsberg

The effect of breed and parity on curves of body condition during lactation estimated using a non-linear Function 565

Behaviour, welfare and health

K. Horsted and J. E. Hermansen

Whole wheat versus mixed layer diet as supplementary feed to layers foraging a sequence of different forage crops 575

Farming systems and environment

D. Bastianelli, M. Quentin, I. Bouvarel, C. Relandeau, P. Lescoat, M. Picard and S. Tesseraud

Early lysine deficiency in young broiler chicks 587

M. C. Márquez and P. Ramos

Effect of the inclusion of food waste in pig diets on growth performance, carcass and meat quality 595

L. A. Sinclair, A. J. Bond, J. A. Huntington and R. J. Readman

Effect of rate of substitution of processed, urea-treated whole-crop wheat for grass silage on the intake, milk production and diet digestibility in dairy cows and ruminal metabolism *in vitro* 601

T. W. J. Keady, F. O. Lively, D. J. Kilpatrick and B. W. Moss

Effects of replacing grass silage with either maize or whole-crop wheat silages on the performance and meat quality of beef cattle offered two levels of concentrates 613

G. E. Banchemo, G. Quintans, A. Vazquez, F. Gigena, A. La Manna, D. R. Lindsay and J. T. B. Milton

Effect of supplementation of ewes with barley or maize during the last week of pregnancy on colostrum production 625

