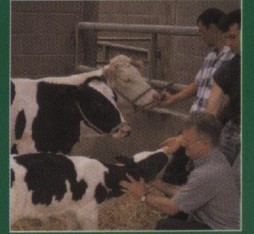
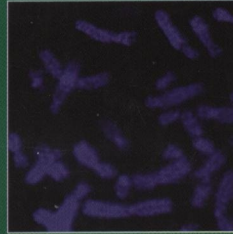


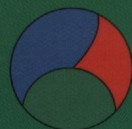
ISSN 1751-7311



# animal

AN INTERNATIONAL JOURNAL OF ANIMAL BIOSCIENCE

**CAMBRIDGE**  
UNIVERSITY PRESS



animal

CONTENTS

Breeding and genetics

*J. Lassen, M. K. Sørensen, P. Madsen and V. Ducrocq*  
 A stochastic simulation study on using different models for prediction of breeding values while changing the breeding goal 631

*J. Casellas, G. Caja and J. Piedrafita*  
 Genetic determinism for within-litter birth weight variation and its relationship with litter weight and litter size in the Ripollesa ewe breed 637

Nutrition

*M. T. P. Dentinho, O. C. Moreira, M. S. Pereira and R. J. B. Bessa*  
 The use of a tannin crude extract from *Cistus ladanifer* L. to protect soya-bean protein from degradation in the rumen 645

*S. Chamorro, M. S. Gómez-Conde, A. M. Pérez de Rozas, I. Badiola, R. Carabaño and J. C. De Blas*  
 Effect on digestion and performance of dietary protein content and of increased substitution of lucerne hay with soya-bean protein concentrate in starter diets for young rabbits 651

*A. AbuGhazaleh and B. N. Jacobson*  
 Production of *trans* C18:1 and conjugated linoleic acid in continuous culture fermenters fed diets containing fish oil and sunflower oil with decreasing levels of forage 660

*J. J. G. C. van den Borne, J. W. Schrama, M. J. W. Heetkamp, M. W. A. Verstegen and W. J. J. Gerrits*  
 Synchronising the availability of amino acids and glucose increases protein retention in pigs 666

*V. García, P. Catalá-Gregori, J. Madrid, F. Hernández, M. D. Megías and H. M. Andrade-Montemayor*  
 Potential of carvacrol to modify *in vitro* rumen fermentation as compared with monensin 675

Physiology and functional biology of systems

*K. C. Chang*  
 Key signalling factors and pathways in the molecular determination of skeletal muscle phenotype 681

*H. A. de Boo, P. L. van Zijl, H. N. Lafeber and J. E. Harding*  
 Urea production and arginine metabolism are reduced in the growth restricted ovine foetus 699

Behaviour, welfare and health

*V. M. Thorup, F. Aa. Tøgersen, B. Jørgensen and B. R. Jensen*  
 Biomechanical gait analysis of pigs walking on solid concrete floor 708

Farming systems and environment

*J. Vayssières, P. Lecomte, F. Guerrin and U. B. Nidumolu*  
 Modelling farmers' action: decision rules capture methodology and formalisation structure: a case of biomass flow operations in dairy farms of a tropical island 716

*P. D. Le, A. J. A. Aarnink, A. W. Jongbloed, C. M. C. Van der Peet-Schwering, N. W. M. Ogink and M. W. A. Verstegen*  
 Effects of dietary crude protein level on odour from pig manure 734

*T. Serenius and K. J. Stalder*  
 Length of productive life of crossbred sows is affected by farm management, leg conformation, sow's own prolificacy, sow's origin parity and genetics 745

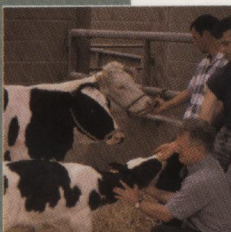
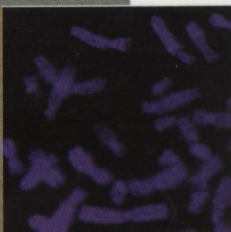
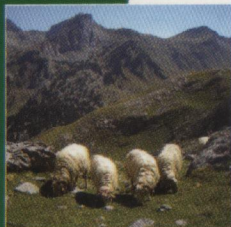
*B. P. Garry, M. Fogarty, T. P. Curran, M. J. O'Connell and J. V. O'Doherty*  
 The effect of cereal type and enzyme addition on pig performance, intestinal microflora, and ammonia and odour emissions 751

*P. Huhtanen, M. Rinne and J. Nousiainen*  
 Evaluation of the factors affecting silage intake of dairy cows: a revision of the relative silage dry-matter intake index 758

*D. T. Juniper, M. J. Bryant, D. E. Beever and A. V. Fisher*  
 Effect of breed, gender, housing system and dietary crude protein content on performance of finishing beef cattle fed maize-silage-based diets 771

Product quality, health and well-being

*C. B. Li, X. L. Xu, G. H. Zhou, S. Q. Xu and J. B. Zhang*  
 Effects of carcass maturity on meat quality characteristics of beef *semitendinosus* muscle for chinese native yellow steers 780



Cambridge Journals Online

For further information about this journal please go to the journal website at:  
[http://www.journals.cambridge.org/jid\\_anm](http://www.journals.cambridge.org/jid_anm)