

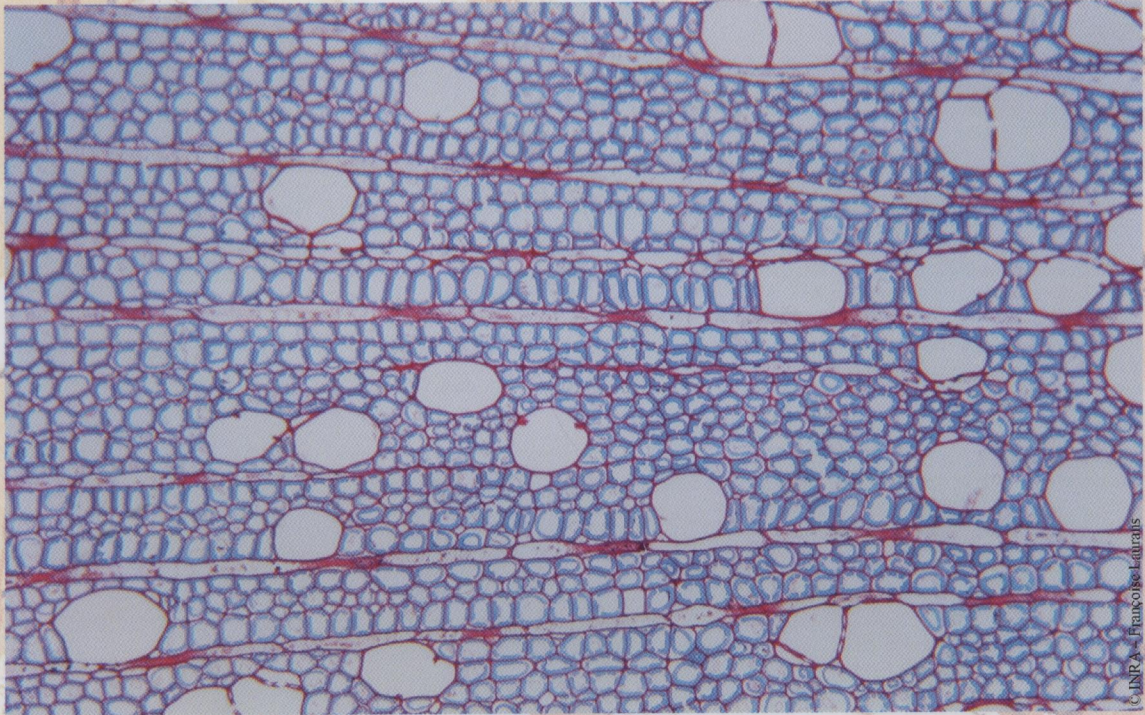
COMPTES RENDUS

Tome 327
fascicule 9-10

septembre-octobre 2004

ISSN 1631-0691

BIOLOGIES



© JNR & François Ladrans

Recherches actuelles sur les parois lignifiées secondaires

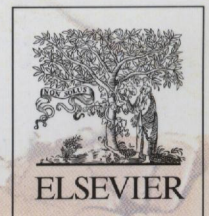
Un numéro thématique dédié à Bernard Monties

Current research on secondary lignified cell walls

A thematic issue dedicated to Bernard Monties

Rédacteur invité / *Guest Editor* : **Bernard Kurek**

ACADÉMIE DES SCIENCES — PARIS



COMPTES RENDUS BIOLOGIES

ACADÉMIE DES SCIENCES, PARIS

2004 – Tome 327 – N° 9–10

Recherches actuelles sur les parois lignifiées secondaires

Un numéro thématique dédié à Bernard Monties

Current research on secondary lignified cell walls

A thematic issue dedicated to Bernard Monties

Rédacteur invité / Guest Editor: Bernard Kurek

- Foreword
Anne-Marie Catesson 775
- Chemical and biochemical aspects of lignification**
- Coniferyl alcohol reactivity at the air/water interface
Bernard Cathala, Véronique Aguié-Béghin, Roger Douillard 777
- Helicoidal pattern in secondary cell walls and possible role of xylans in their construction
Danièle Reis, Brigitte Vian 785
- The regulation from guaiacyl to syringyl lignin in the differentiating xylem of *Robinia pseudoacacia*
Kazuchika Yamauchi, Kazuhiko Fukushima 791
- Lignification in poplar plantlets fed with deuterium-labelled lignin precursors
Christian Rolando, Nicolas Daubresse, Brigitte Pollet, Lise Jouanin, Catherine Lapierre 799
- Immuno- and cytochemical approach of cell-wall characterization**
- A polyclonal antibody directed against syringylpropane epitopes of native lignins
Jean-Paul Joseleau, Oskar Faix, Ken-Ichi Kuroda, Katia Ruel 809
- Towards a new concept of lignin condensation in kraft pulping. Initial results
Göran Gellerstedt, Andrea Majtnerova, Liming Zhang 817
- Immunolocalization of phenylalanine ammonia-lyase and cinnamate-4-hydroxylase in differentiating xylem of poplar
Takahiko Sato, Keiji Takabe, Minoru Fujita 827
- Genetics of cell-wall formation and properties**
- The polymorphism of the genes/enzymes involved in the last two reductive steps of monolignol synthesis: what is the functional significance?
Alain-Michel Boudet, Simon Hawkins, Soizic Rochange 837
- Genetic and molecular basis of grass cell wall biosynthesis and degradability. II. Lessons from brown-midrib mutants
Yves Barrière, John Ralph, Valérie Méchin, Sabine Guillaumie, John H. Grabber, Odile Argillier, Brigitte Chabbert, Catherine Lapierre 847
- Microbial wood degradation**
- Cryo-FE-SEM & TEM immuno-techniques reveal new details for understanding white-rot decay of lignocellulose
Geoffrey Daniel, Jindrich Volc, Marja-Leena Niku-Paavola 861
- Physicochemical and mechanical properties of woody material**
- Micromechanical understanding of the cell-wall structure
Lennart Salmén 873
- Using wood creep data to discuss the contribution of cell-wall reinforcing material
Joseph Gril, David Hunt, Bernard Thibaut 881
- Tension wood**
- Lignification and tension wood
Gilles Pilate, Brigitte Chabbert, Bernard Cathala, Arata Yoshinaga, Jean-Charles Leplé, Françoise Laurans, Catherine Lapierre, Katia Ruel 889
- Pulping and fibre technology**
- Formation of macromolecular lignin in ginkgo xylem cell walls as observed by field emission scanning electron microscopy
Noritsugu Terashima, Tatsuya Awano, Keiji Takabe, Masato Yoshida 903
- Isolation of residual lignin from softwood kraft pulp. Advantages of the acetic acid acidolysis method
Dominique Lachenal, Gérard Mortha, Rose-Marie Sevillano, Michail Zaroubine 911
- Oxalic acid: a microbial metabolite of interest for the pulping industry
Valérie Meyer-Pinson, Katia Ruel, François Gaudard, Gérard Valtat, Michel Petit-Conil, Bernard Kurek 917
- Biomass conversion and new materials from lignified cell walls and co-products**
- Developing molecular strategies for fractionation, delignification and characterisation of plant fibres
Emmanouil Avgerinos, Evaggeli Billa, Maria Papatheofanous, Dimitrios Koullas, Emmanuel Koukios 927
- Lignin-polymer blends: evaluation of compatibility by image analysis
Charlyse Pouteau, Stéphanie Baumberger, Bernard Cathala, Patrice Dole 935
- Surface modification of cellulose fibers: towards wood composites by biomimetics
Sheila E. Gradwell, Scott Rennecker, Alan R. Esker, Thomas Heinze, Paul Gatenholm, Carlos Vaca-Garcia, Wolfgang Glasser 945