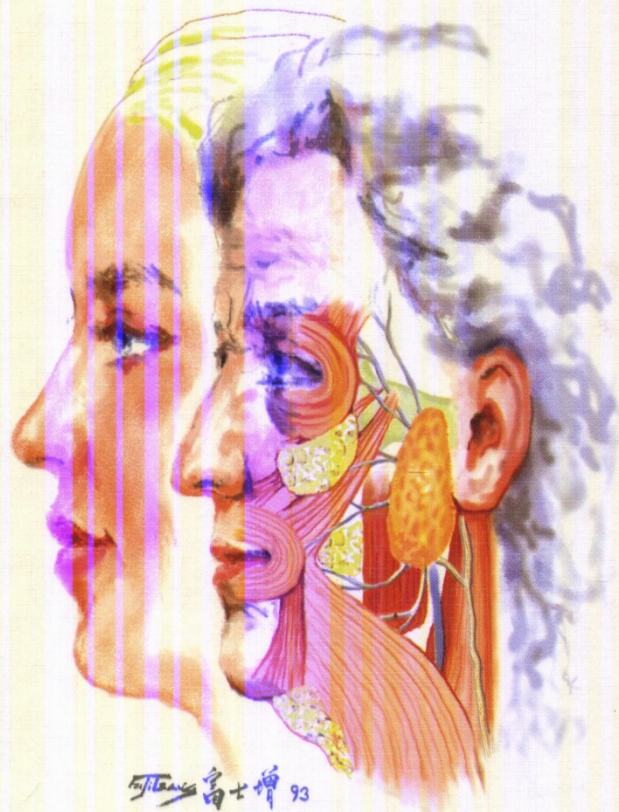


ATLAS OF SURGICAL ANATOMY OF THE FACE AND NECK

Yves SABAN Roberto POLSELLI

Preface by M. Eugene TARDY



MASSON 

CONTENTS

| | |
|--|-----|
| PREFACE, by M. Eugene TARDY | V |
| FOREWORDS, by André BOURGEON and François DEMARD | VII |
| INTRODUCTION | IX |

PART ONE TOPOGRAPHIC ANATOMY AND SUPERFICIAL ANATOMIC SYSTEMS OF THE FACE AND NECK

| | |
|--|----|
| Chapter 1. Skin - Subcutaneous fat - SMAS | 3 |
| Topographic anatomy | 4 |
| Skin | 8 |
| Subcutaneous fat | 12 |
| SMAS | 16 |

PART TWO UPPER FACE AND MIDDLE FACE

| | |
|--|----|
| Chapter 2. Facial Nerve , by José SANTINI | 23 |
| Parotid area | 24 |
| Main trunk | 26 |
| Relationships in the parotid gland | 28 |
| Temporofacial branch | 30 |
| Buccal rami | 34 |
| Cervicofacial branch | 36 |
| Marginal mandibular nerve | 38 |
| Chapter 3. Forehead and Temporal Area , with the collaboration of Gilles VAILLE | 41 |
| Forehead area | 42 |
| Temporal area | 48 |
| Relationships with facial nerve and vessels | 49 |

| | |
|--|----|
| Chapter 4. Parotid Area and Cheek , by José SANTINI | 53 |
| Cheek and parotid area | 54 |
| Muscles and SMAS | 56 |
| SubSMAS dissection | 58 |
| Subcutaneous dissection | 62 |
| Buccal space | 63 |
| Chapter 5. Deep Anatomy of the Upper Face and Middle Face , with the collaboration of Hervé RASPALDO | 67 |
| Superior orbital rims and neurovascular pedicles | 68 |
| Temporozygomatic area and superficial temporal fat pad | 72 |

PART THREE
CENTRAL FACE

| | |
|---|-----|
| Chapter 6. Eyelids and Anterior Orbital Anatomy , with the collaboration of Jacques LAGIER . | 79 |
| Skin and anatomic layers | 80 |
| Upper eyelid | 82 |
| Lower eyelid | 88 |
| Canthal tendons | 90 |
| Chapter 7. The Nose | 93 |
| Nasal muscles | 94 |
| Nasal SMAS expansions | 99 |
| Nasal skeleton | 104 |
| Nasal valve | 110 |
| Nasal septum | 114 |
| Chapter 8. Lips and Buccal Area | 119 |
| Lips morphology | 120 |
| Muscular system of the lips | 122 |
| Lips neurovascular supply | 129 |

PART FOUR
MANDIBULAR AREA AND NECK

| | |
|---|-----|
| Chapter 9. Superficial Anatomy of the Neck | 137 |
| Platysma dissection | 138 |
| Superficial cervical plexus | 143 |
| Superficial jugular venous system | 148 |
| Supraclavicular region | 149 |
| Chapter 10. Mandibular and Submental Areas | 151 |
| Mandibular arch area | 152 |
| Subcutaneous cervical fat | 156 |
| SUBJECT INDEX | 159 |