

Coupe AA

Partie Projet



Hc±cf g'P qtf '*dme'4+



Coupe BB
Ech 1/100

REALISE PAR UN PRODUIT AUTODESK A BUT EDUCATIF

ARCHITECTURE ET HABITAT

REALISE PAR UN PRODUIT AUTODESK A BUT EDUCATIF

0 ipkn*1g T g'kCpueki pgo gpn'Uvr *2Hgw 'sV'g'ic' T gcej gtej g'Ulekp'vltis vgo
*****Wjks.g'uks' Ue-4 T'cj ngT'g'DNF'CO
Institut d'Architecture et d'Urbanisme
AOU DHANE MOHEND SAID

Projet de Fin d'Etudes

Gpccf t²'rct'<
Mr :Bouadi.M

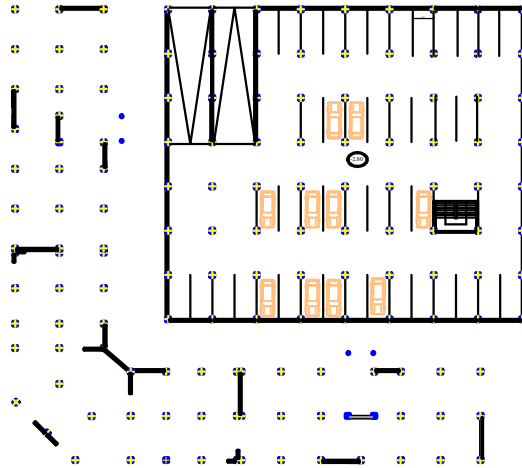
Etudiante :
Amara Souad
Zeriri Amel



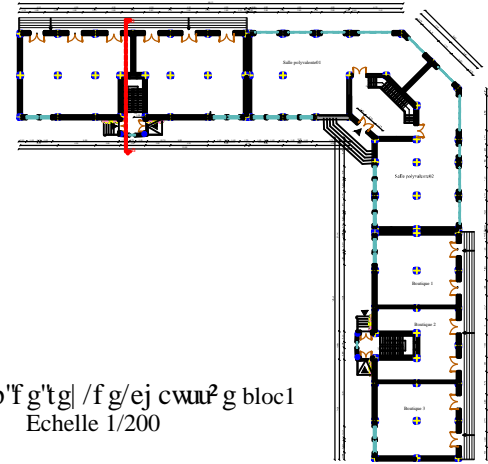
19/09/2015

Partie Projet

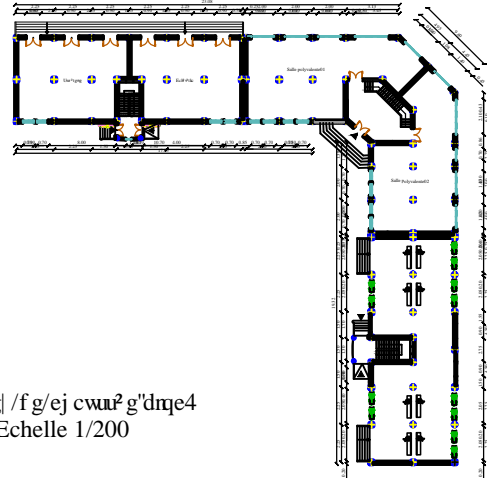
ARCHITECTURE
ET
HABITAT



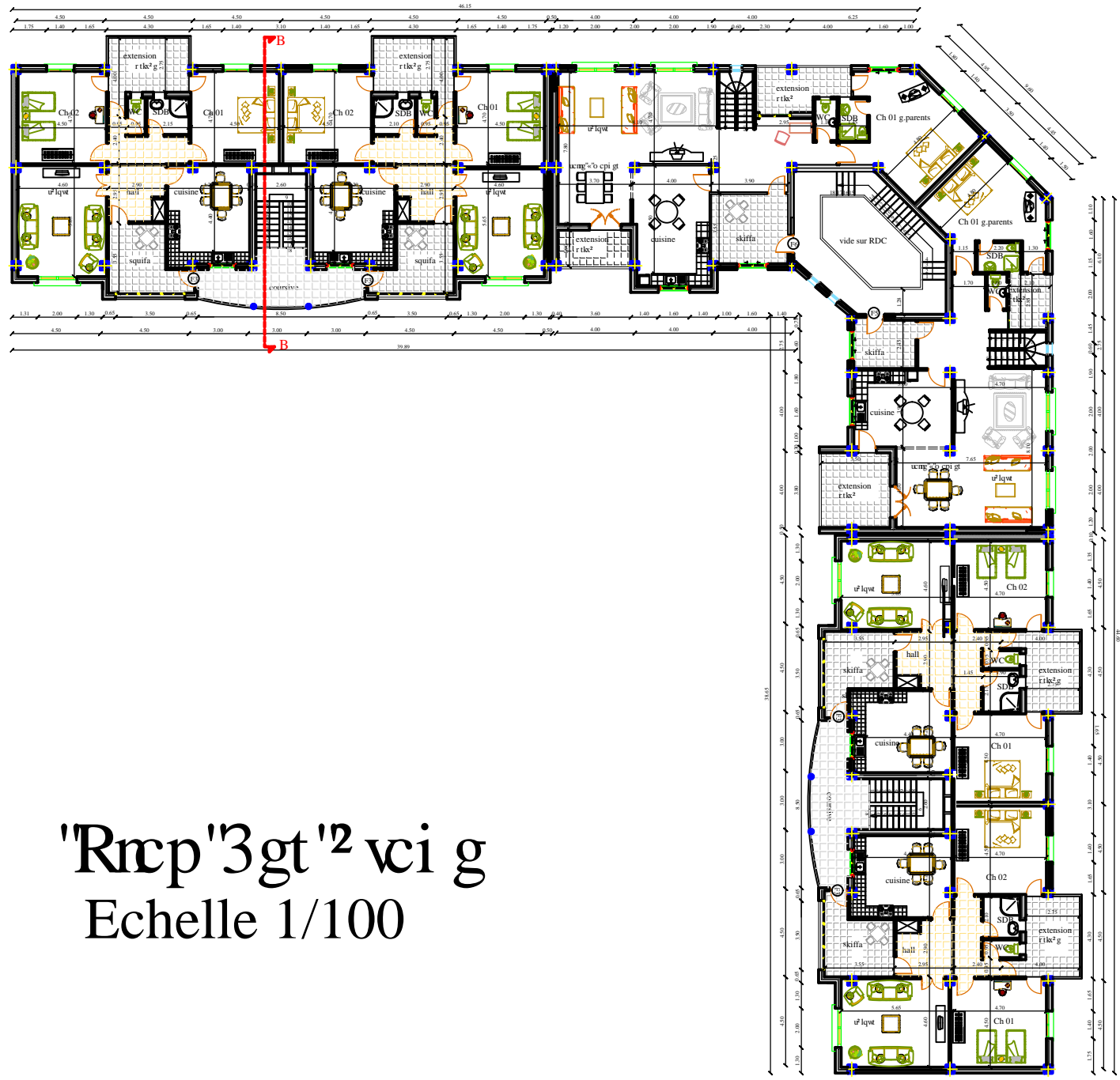
Parking sous-sol
Echelle 1/200



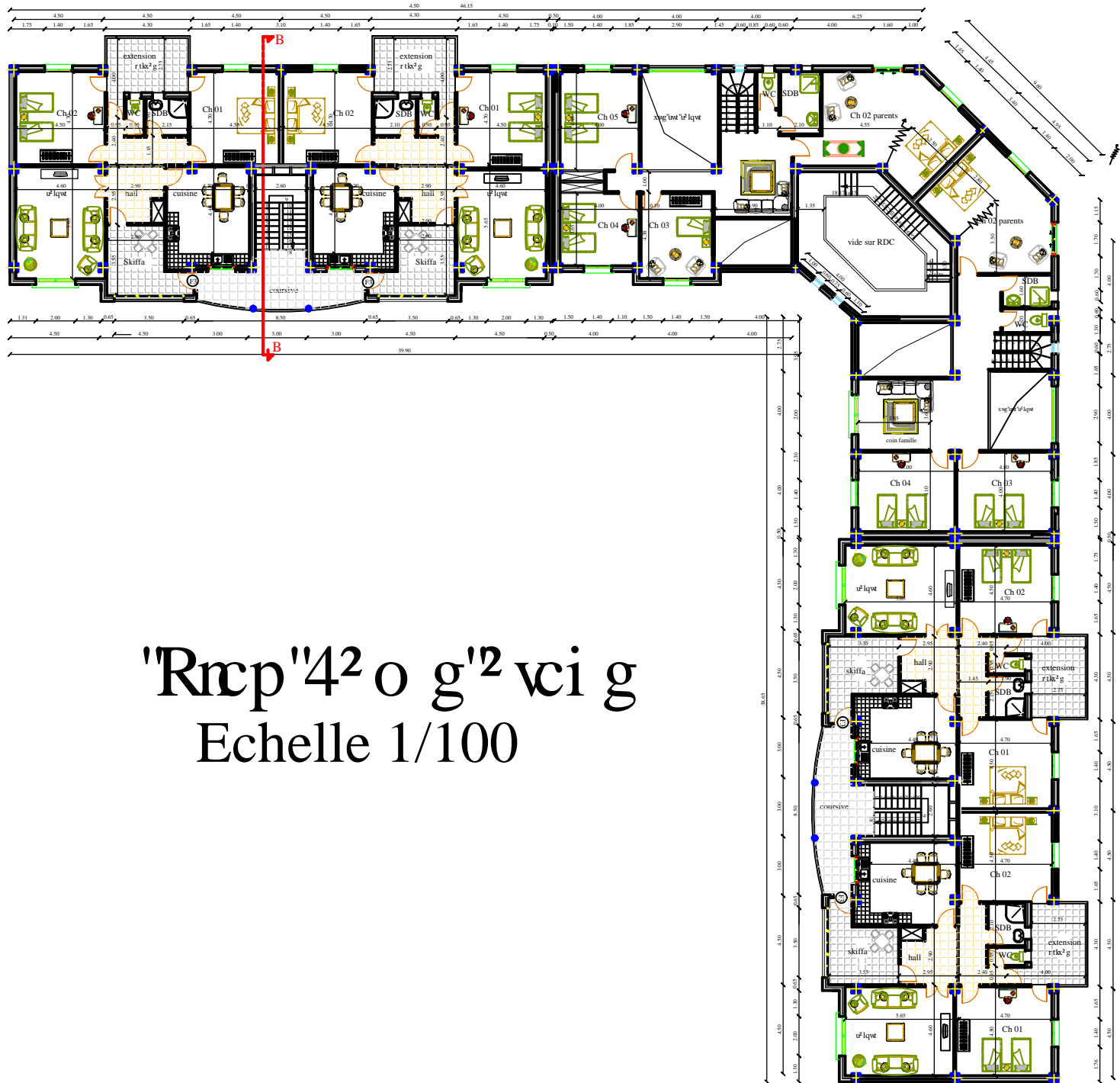
Rcp'f g'tgl /f g/ej cwu² g bloc1
Echelle 1/200



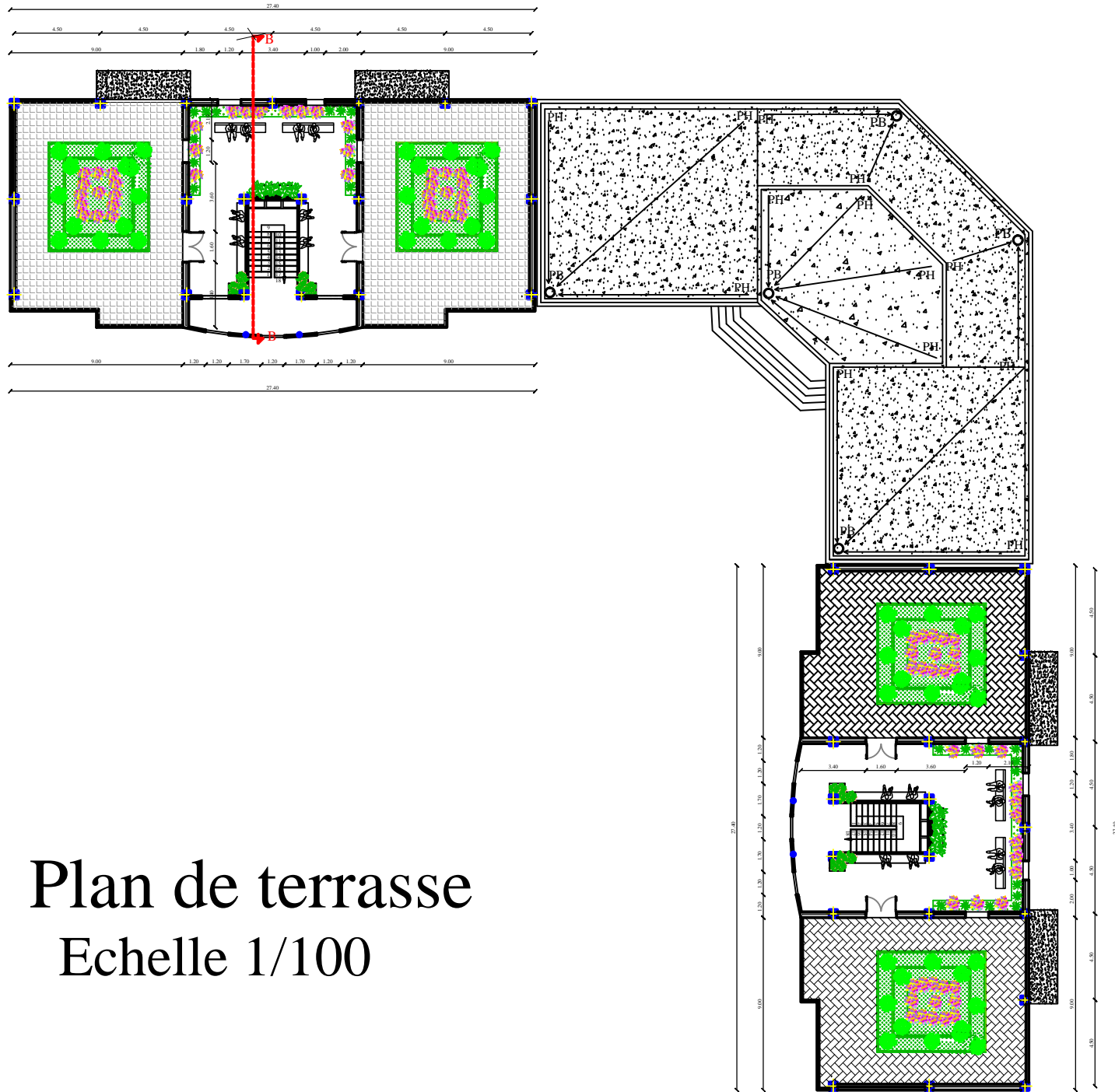
Rcp'f g'tgl /f g/ej cwu² g'dmpe4
Echelle 1/200



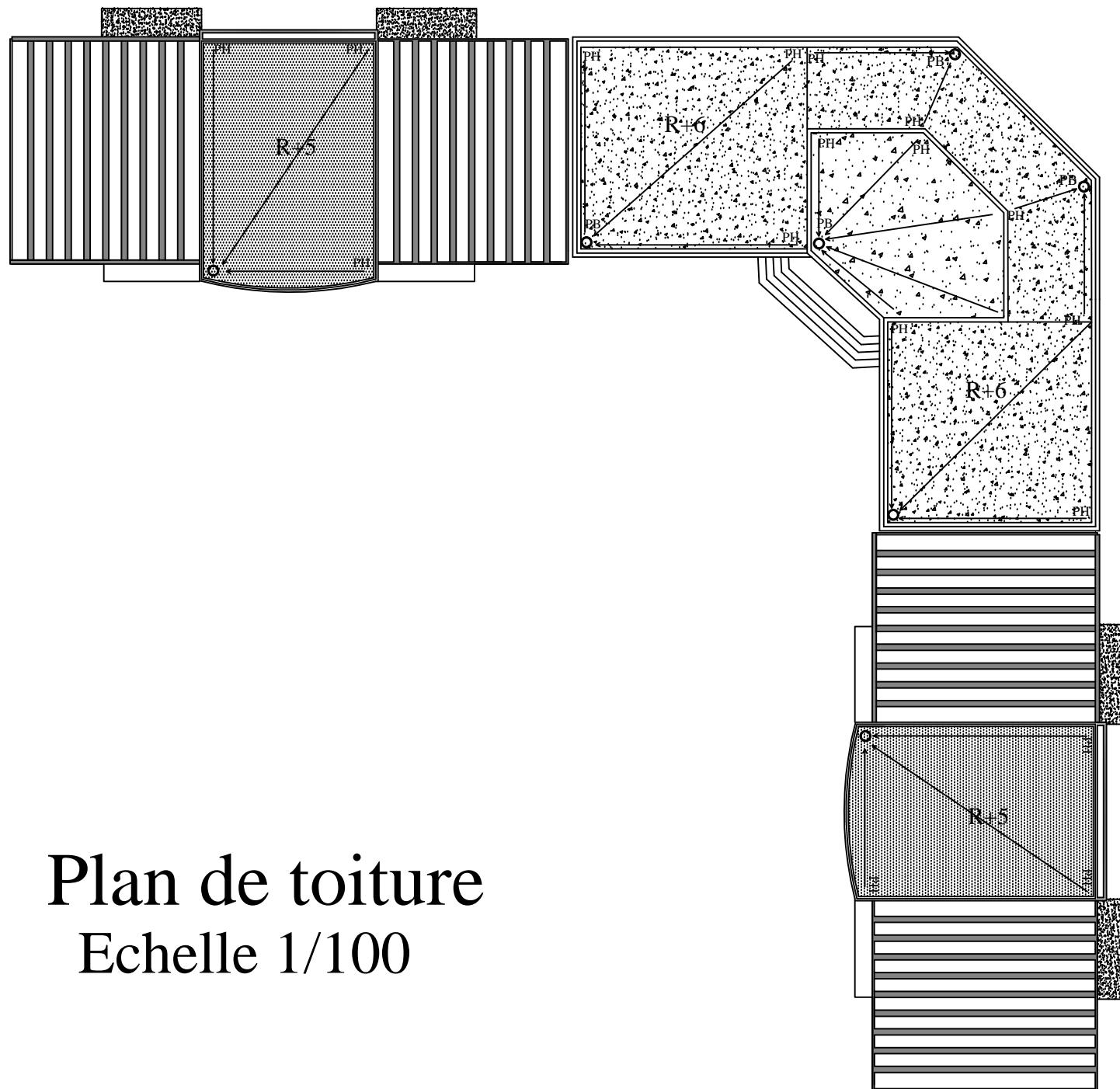
"Rncp"3gt'2 vci g
 Echelle 1/100



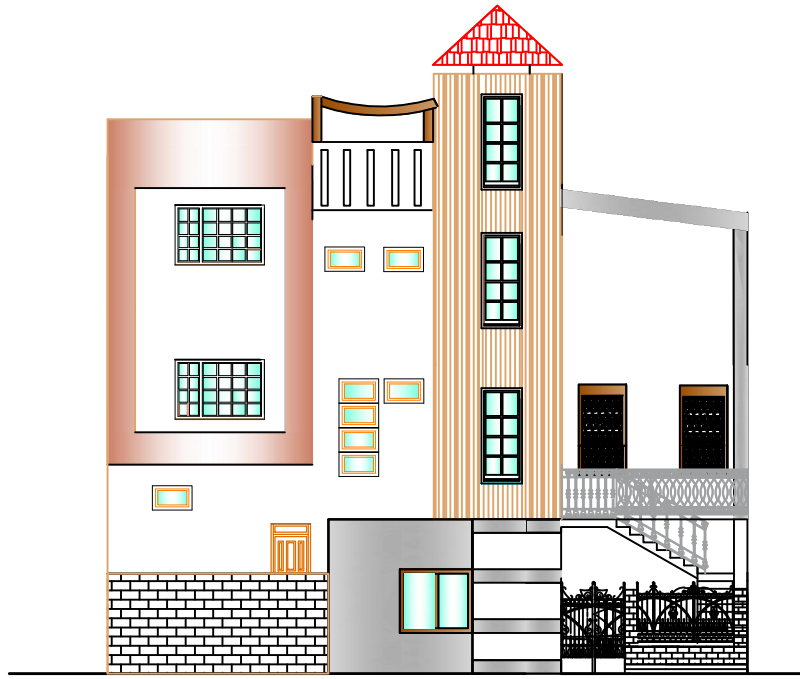
'Rncp'42 o g'2 vci g
 Echelle 1/100



Plan de terrasse
Echelle 1/100



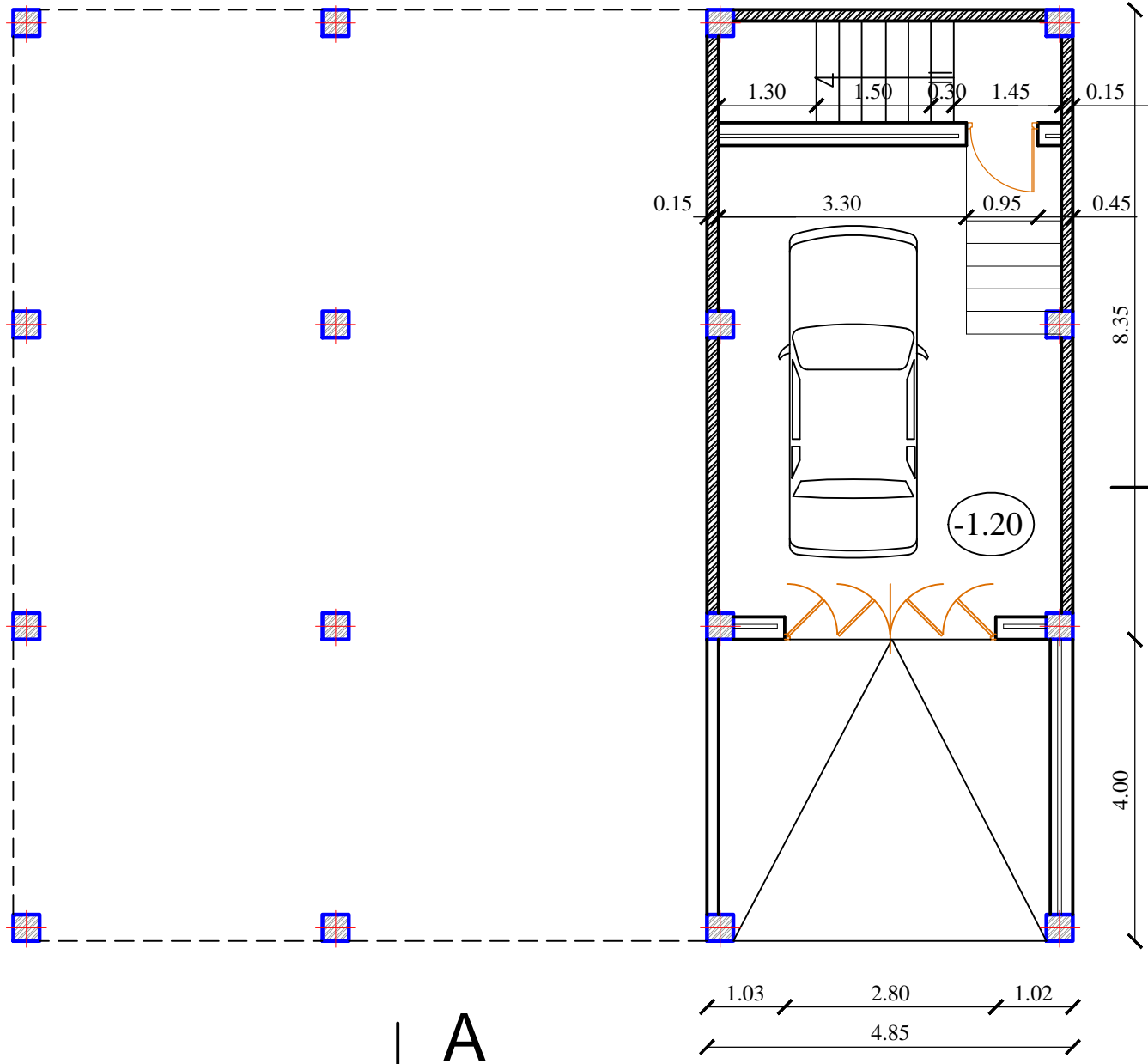
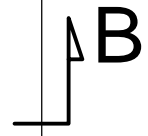
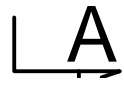
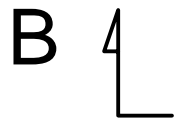
Plan de toiture
Echelle 1/100

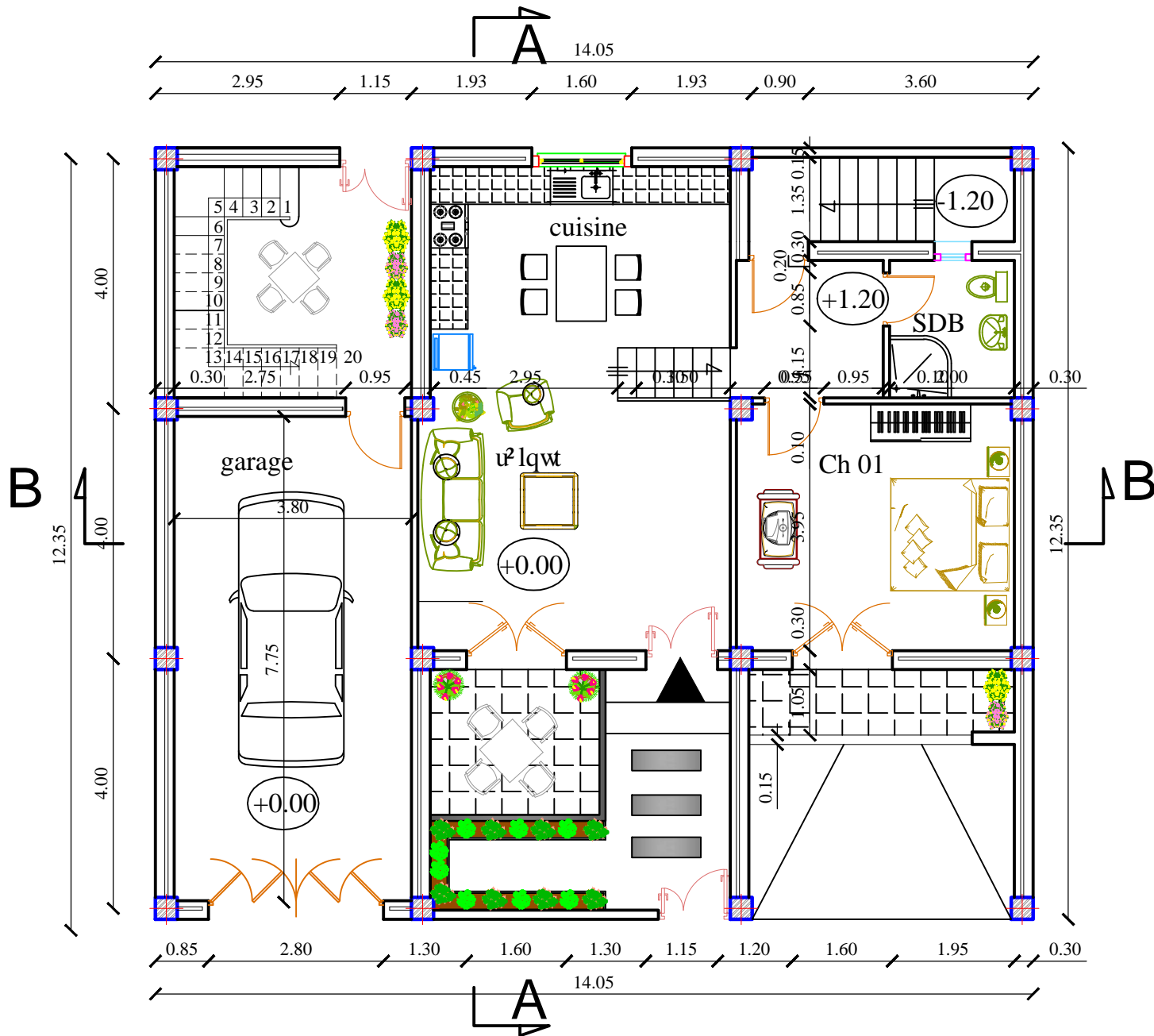


Hc±cf g'P qtf



Hc±cf g'Uwf





Rncp'Tg| "/f g"/ej cwu² g

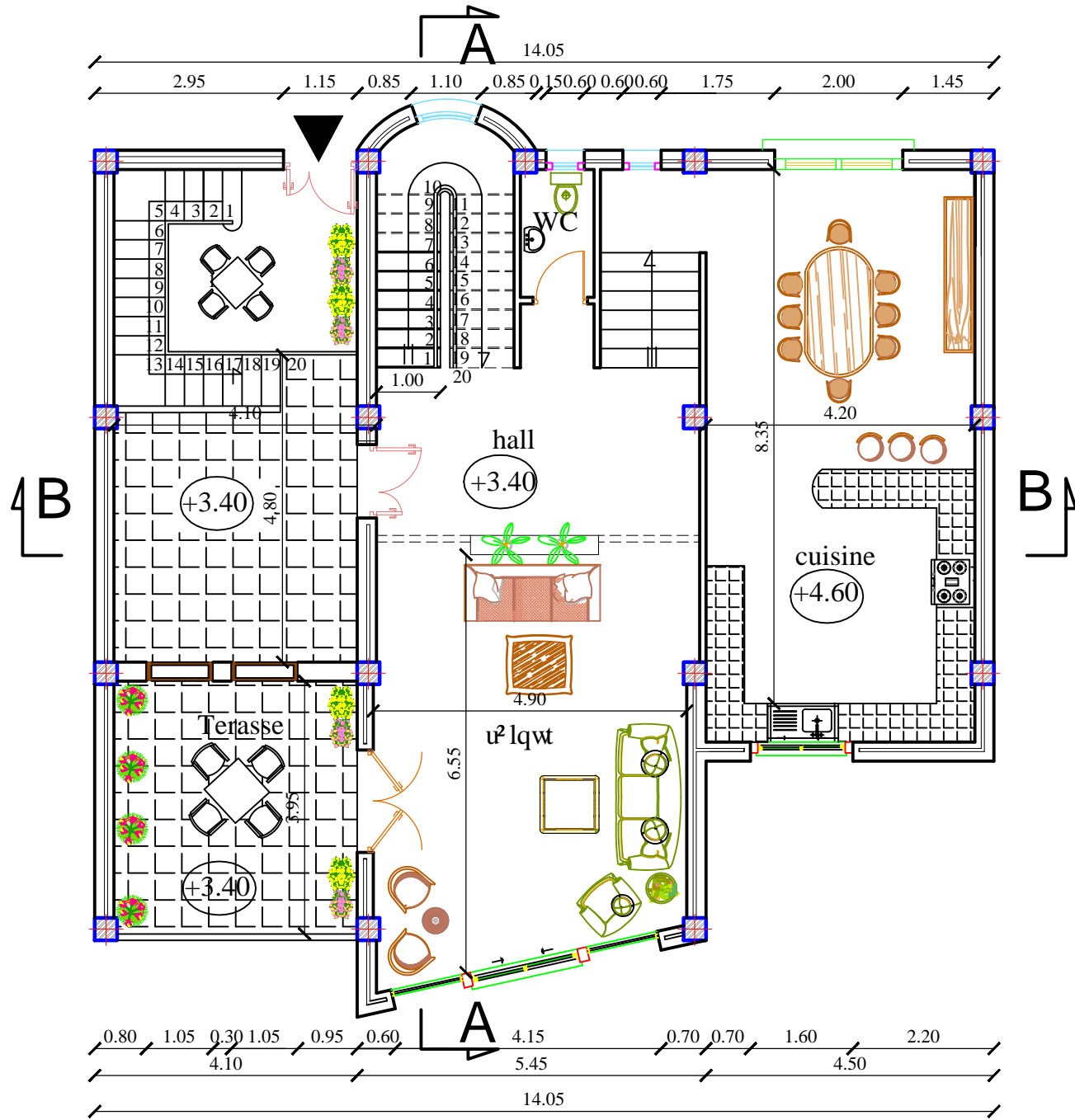
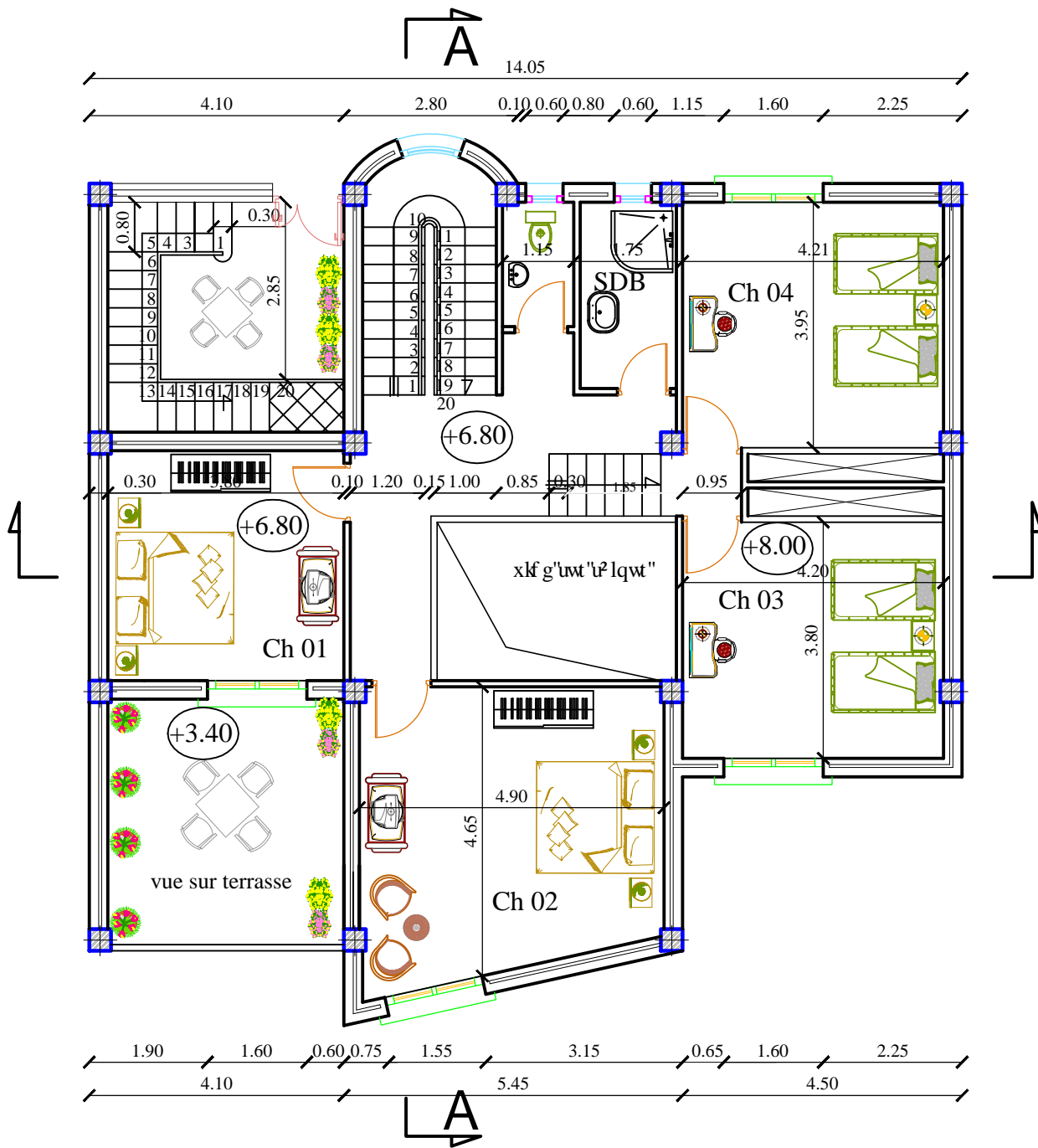
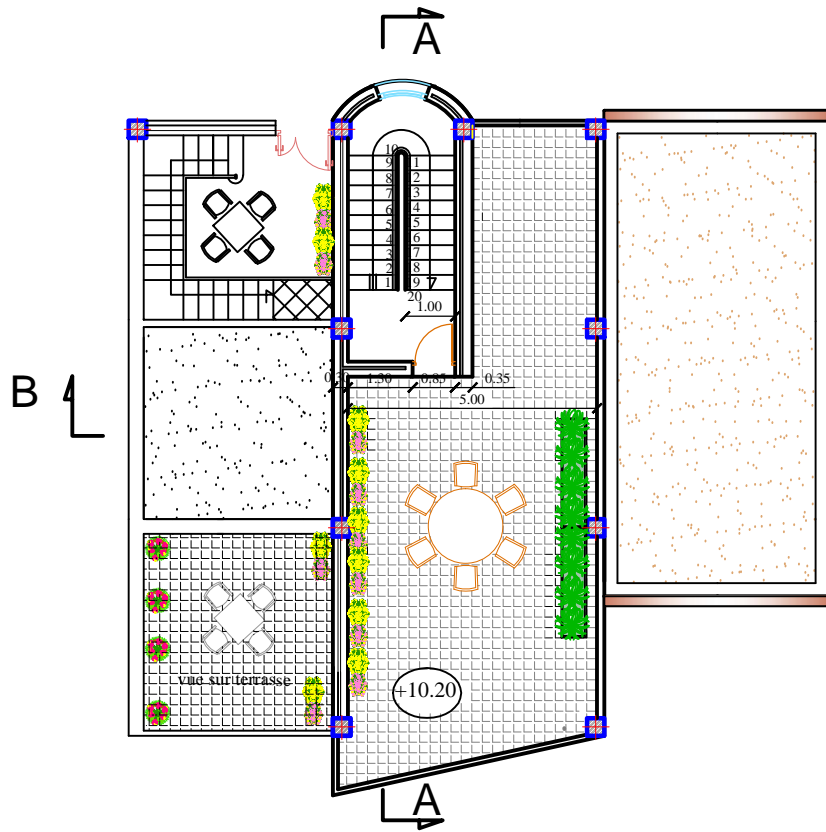


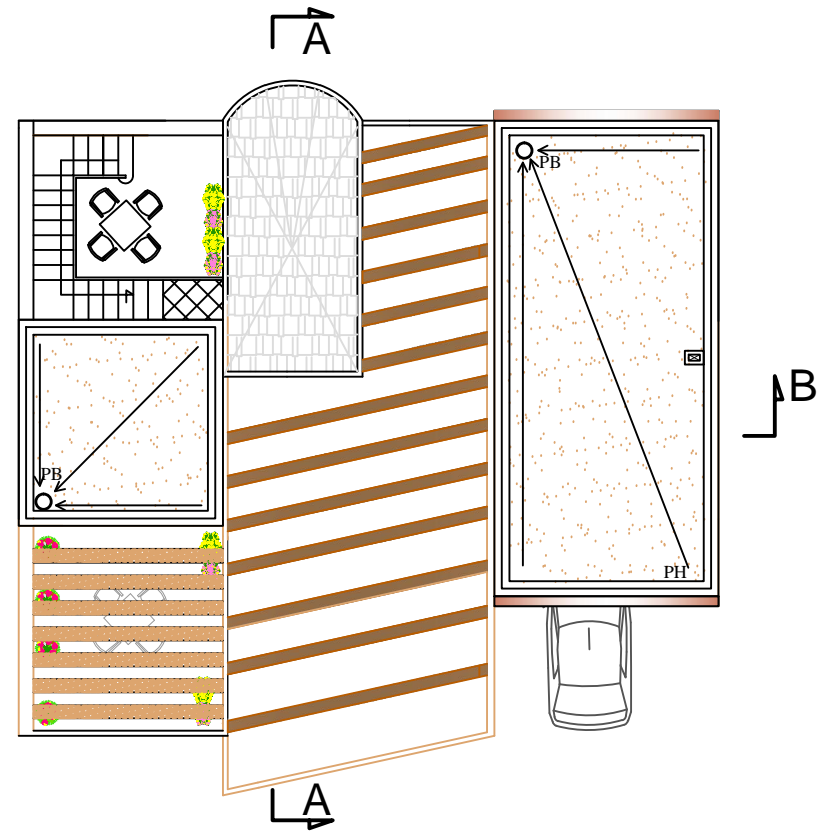
Рис. 3. План первого этажа



Rncp'f g'4'2 o g'2 vci g



Plan terrasse



Plan de toiture

REALISE PAR UN PRODUIT AUTODESK A BUT EDUCATIF



Hc±cf g'Guv'*dme'3+



Hc±cf g'Guv'*dme'4+

REALISE PAR UN PRODUIT AUTODESK A BUT EDUCATIF

REALISE PAR UN PRODUIT AUTODESK A BUT EDUCATIF

REALISE PAR UN PRODUIT AUTODESK A BUT EDUCATIF



Hc±cf g"Qwguv"*dmqe"4"+



Expression architecturale et constructive

ARCHITECTURE ET HABITAT 02

1. Objet :

Egw'rj cug'eqpukng'«'tcf wkg'gv'«'o qf'2 rkg't'ngu'f'khf' tgpv'u'tgeqo o cpf cwkpu cxcpe'2 gu'r't'2 e'2 f go o gpv'gp'gur cegu.'clpuk's wg'rc'eqo r qukskpp'f'gu'f'khf' tgpv'u'2 f'f' o gpv'f'w'r' tqlgv'gp'r' rcp.'gp'hc'±cf g.'gv'gp'xqno g'0

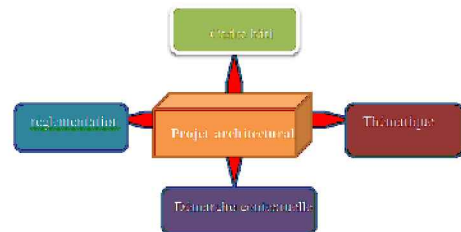
2. Démarche :

Nc'f'2 o ctej g'lwklg'r' qwt'cdqwk't'cw'r' tqlgv'ctej kgewtcn'r' cuug'r' ct'wp'egt'v'clp pgo dtg'f'p'vr' gu's'wg'p'qwu'r' qwxqpu'2' uwo gt'eqo o g'lwkl'<

.....3'l'Ng't'cr' r'gn'f' gu'f'khf' tgpv'u'eqpegr' u'gv'r' t'p'ekr' gu'2' pwo' 2' t'2' u'l'w's' w'k' r' t'2' u'gpv'..... v'ck'2' u'gv'encu'2' u'r' ct'q'tf' t'g'f' g'r' t'k'q'k'2' u'0

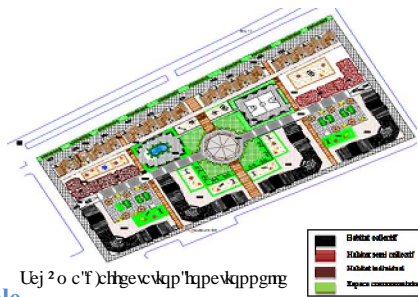
4' l'nc't'gej' g'ej' g'f'g'rc'eqp'v'p'k'2' c'tej' kgewt'c'g'f' g'ng'pugo' drg
5' l'hc'2' o' kug'gp'r' n'eg'f' wp'o' qf'3' ng'gp'r' r'cp'g'v'gp'hc'±cf g'gv'f' g'hw'k'r' t'qr' qugt' wp'g'nt'wewt'g'cf'2' s' w'c'g'0

3. Composition /Décomposition Volumétrique:



Cette étape nous a permis de dégager deux dispositions:

- Par une paroi urbaine r'2' t'lr' j'2' t'k' w'g'eqp'p'cp'v'f' gu' c'v'k'k'2' u'eqo o g'tel'c'ng'u'f' w'e'1/2' Sud du projet
- Le coeur d'ilot qui constituera r'o' cl'q'k'2' f'w'r' t'q'i' t'co' o' g' d'habitat et abritant les espaces communautaires du projet.



3.1 Organisation formelle de l'ensemble

L'aménagement du plan de masse se fait par rapport aux paramètres suivants :

- Ø Les enveloppes
- Ø Les espaces libres
- Ø Les parcours

3.1.1 Les enveloppes :

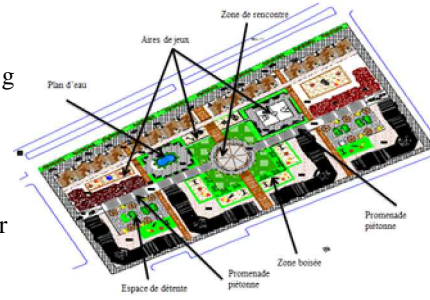
/n'j' cdk'cv'eqm'ge'wh'et'2' g'wp'gp'x'gn'r'r' g'r' t'q'v' i' 2' g'f'g'h'c'x'cp'v'r' r'p's' w'k'eq'p'uk'w'g'rc' t'q'w'g'eqo o' w'p'c'ng'g'v'f' g'h'c't't'k'2' t'g'r' r'p's' w'k'eq'p'uk'w'g'ng'ur' c'eg'ug'o' k'r' w'd'rie'eq'm'ge'wh' g'v'eq'p'uk'w'g'ng'eq' w't' f'g'h'k'q'0

/n'j' cdk'cv'k'p'f' k'k'f' w'gn'et'2' g'wp'gp'x'gn'r'r' g'r' t'q'v' i' 2' g'f'g'h'c'x'cp'v'r' r'p's' w'k'eq'p'uk'w'g'rc' TP'33'g'v'f' g'h'c't't'k'2' t'g'r' r'p's' w'k'eq'p'uk'w'g'ng'ur' c'eg'ug'o' k'r' w'd'rie'eq'm'ge'wh'g'v'h'q'to' g'ng'eq' w't' f'g'h'k'q'0

3.1.2 Les espaces

lib'it'2' h'z'g'k'p'f' co'2' p'ci'2' ng'eq' w't' f'k'q'v'r' t'g'p'f' gp'eq'p'uk'2' c'v'k'q'p'rc' r' t'2' q'ee'w' c'v'k'q'p'2' r'cd'q't'2' g'f' c'pu'p'q'v'g'2' w'f' g'eq'p'v'z' w'ng'g'

- Nc'r' t'qo' g'p'cf' g'r'k'2' v'p'p'g
- Les aires de jeux
- Ngu'r' n'eg'w'g'u'2' h'p'v'cl'p'g' r'rc'eg'f' g' u'c'et'k'h'eg'f' g'h'c'f' i' i' 0
- Les espaces de rencontre
- Les espaces d'expressions
- Ngu'gur' c'egu'f' g'f'2' v'p'p'g



Sans oublier quelques concepts pour

wp'g'eq'p'v'k'w'k'p'2' eq'm'i' k's' w'g's' w'q'p' t'g'v'q'w'g'p'2' e'g'u'ck'g'f' g'p'q'u'l'q'w'u'<

- Nc'd'k'q'f' k'x'g't'uk'2' f'g'rc'hc'w'p'g'g'v'f' g'rc' h'q't'g
- Un plan d'eau artificiel

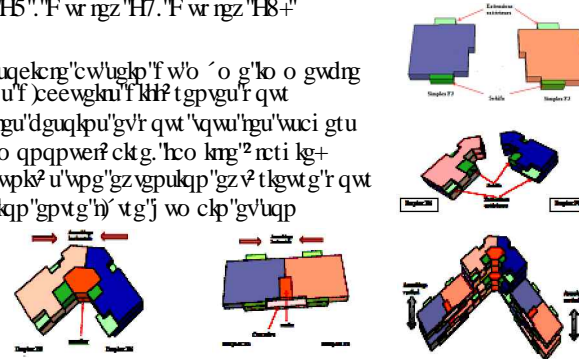
3.2 Organisation formelle de l'ensemble d'habitat collectif :

P' q'w'u'c'x'q'p'u'r' t'q'2' f'2' r'c't' r'c'hc' h'd'2' t'c'v'k'p'1' f' w'ed' w't' f' k'q'v'r' q'w't' c'u'w't'g't' r'c' f' q'w'd'ng'q't'k'p'c'v'k'q'p'p' q't'f' /U'w'f' «'h'g'p'ugo' drg'f' g'u'j' c'd'k'c'v'k'q'p'u'g'v'c'x'q'k' w'p' g'p'u'q'ng'k'ng'o' g'p'v'q'r' w'o' c'n'g'v'2' x'k'g't' h'gu'x'k'u' «'x'k'u'0'U'q'p'q'w'd'r'k'2' h'gu'g'z'k'i' g'p'egu' eq'p'v'z' w'ng'g'u'g'v'g'u'f' q'p'p'2' g'u'w'd'c'k'p'g'u'0

3.3 Organisation formelle d'un immeuble d'habitation :

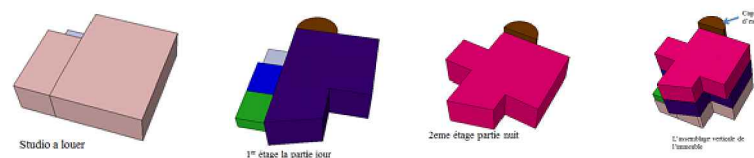
3'l'N'ko' o' g'w'd'ng'eq'm'ge'wh'c'd't'k'g'f' t'q'u'v'f' r' g'u'f' w'p'k'2' u'f' j' c'd'k'c'v'k'q'p'f' g'v'f' r' q'ng'i' k'gu' f' k'h'f' t'g'p'v'g'u'U'ko' r' ng'z' 'H5'. 'F' w' ng'z' 'H7'. 'F' w' ng'z' 'H8'+' E'g'w'g'x'c't'k'2' v' u'g't'v'«'<

/Et'2' g't' w'p'g'o' k'z'k'2' u'q'ek'ng'c'w'ug'k'p'f' w'o' o' g'lo' o' g'w'd'ng' /C'x'q'k'f' g'u'c'ec'r' c'ek'2' u'f' c'ee'w'g'k'u'f' k'h'f' t'g'p'v'g'u'f' q'w' t'2' r' q'p'f' t'g'«'v'q'w'u'g'u'd'g'u'q'p'u'g'v'r' q'w't' v'q'w'u'g'u'w'uci' g'tu' *eq'w' ng' h'co' k'ng'o' q'p'q'w'ef' c'k'g' h'co' k'ng'2' r'c't'i' k'g'+ /Q'h'k'f' «'v'q'w'g'u'g'u'w'p'k'2' u'w'p'g'z'v'p'uk'q'p'g'z' v' t'g'w't' g'r' q'w't' h'x'q't'k'g't' r'c' t'g'r'c'v'k'q'p'g'p't'g'h' v'g'j' w'o' c'lp'g'v'v'q'p' e'n'v'ir'o'n'n'e'm'e'n't



2/'N'ko' o' g'w'd'ng'k'p'f' k'k'f' w'gn'c'd't'k'g'f' g'w'z' v'f' r' g'u'f' w'p'k'2' u'f' j' c'd'k'c'v'k'q'p'f' g'v'f' r' q'ng'i' k'gu' f' k'h'f' t'g'p'v'g'u'w'w'f' k'q' 'H4'g'v'w'p'f' w'r' ng'z' 'h'7'+

/Et'2' g't' w'p'g'o' k'z'k'2' u'q'ek'ng'c'w'ug'k'p'f' w'o' o' g'lo' o' g'w'd'ng' /W'p'w'w'f' k'q'c'w'f'f' E'«'k'q'w'g't' r' q'w't' r' t'q'h'k'g't' f' g'h'go' r' n'eg'o' g'p'v'ut'c'v' i' k's' w'g'f' w'g't'c'k'p' /Ng'4'3' o' g'ng'i' go' g'p'v'«'h'p'v'c'i' g'g'u'v'f' k'k'k'2' g'p'f' g'w'z' r' c't'v'g'u'f' q'w't' v'g'w'p'g'r' c't'v'g' p'w'k'0'N'c' t'g'r'c'v'k'q'p'g'p't'g'g'w'z' g'u'v'c'u'w't'2' r'c't' w'p'g'ek'e'w'r'c'v'k'q'p'x'g't'v'k'c'ng'



4. Structuration des plans

k'u'q'p'v'2' v' c'f' c'r' v' u'r' t'p'ek'r' c'ng'o' g'p'v'«'e'g't'c'k'p'g'u'g'z'k'i' g'p'egu'f' g'rc'v'j'2' o' c'v'k' w'g'c'w'z' f' q'p'p'2' g'u'eq'p'v'z' w'ng'g'u' g'v'rc'eq'p'v'k'w'k'p' d'k'q'er'k'o' c'v'k' w'g'0

P' q't' g'r' t'p'ek'r' g'f' g'«'eq'p'eg'r' v'k'p'g'u'v'f' g'et'2' g't'f' g'w'z' *24+'r' c't'v'g'u'l'q'w't' g'v'p'w'k'c'x'g'e' u'ne' l'ia'ison' v'ert'ic'ale' (e's'c'ali'er' m'ez'z'ani'ne).

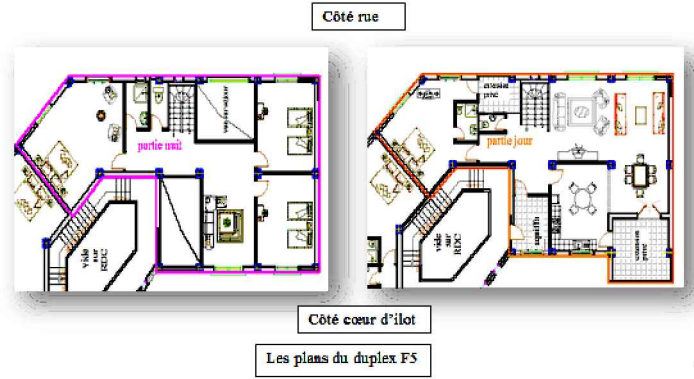
/Nc'r' c't'v'g'p'w'k'g'u'v'k'w'2' g'w't' r'g'p'k'x'g'w'w'r'2' t'g'w't' c'h'k'p'f' c'u'w't'g't' r'g'ec'm' g' g'v'h'k'p'v'o' k'2'0

/W'p'j' c'm'f' g'p'v'2' g'g'u'v'2' e'rc'k'2' g'v'c'2' t'2' p'c'w't'g'm'g'o' g'p'v'g'v'g'r' q'uk'k'q'p'p'g'o' g'p'v'f' g'w'k'h'c' u'w't' r'g'eq' w't' f' g'h'k'q'v'c'h'k'p'f' c'u'w't'g't' h'k'p'v'o' k'2'0

/ng'u'g'ue'c'k'g't'u'q'p'v'x'k'k'k'd'ng'u'«'r' c't'v'k'f' w'j' c'm'f' g'p'v'2' g'r' q'w't' t'g'p'f' t'g' r'g' h'p'ev'k'q'p'p'g'o' g'p'v'f' g'h'w'p'k'2' f' j' c'd'k'c'v'k'q'p' h'k'k'd'ng'

Expression architecturale et constructive

/Ngur ceg'iqwt'c'wpg'f qwdng'qt'lgpvc'kqp'lw'nc'twg'gv'ig'eò w't'f'kqv
/C²tc'kqp'pcwt'gnr'qwt'ngu'4'r'ct'vku'iqwt'gv'pwk
Nq'wx'gt'wt'g'lw'nc'twg'f'wpg'r'ct'v'gv'f'c'wt'g'r'ct'v'lw'ig'eò w't'f'kqv'cu'wt'g'nc²tc'kqp
naturelle de l'espace jour et nuit.



5. Principes de composition des façades :

« La façade est le résultat d'une organisation fonctionnelle au niveau du plan, et une expression architecturale. Elle constitue le lieu de transition entre l'espace intérieur et extérieur et elle doit être en harmonie avec son voisinage. » Mario Botta.

5.1 les façades collectives :

P qwu'cxqpu'qr v'f'cpu'pqt'g'r'q'lgv'r'qwt'wpg'zr'tgu'kqp'eqp'go r'qt'ckp'f'gu
hc±cf'gu'r'qwt'f'k'gt'ugu't'cku'qpu'

- § N'edugpeg'f'wp'lw'r'q'v'f'z'r'tgu'kqp'f'cpu'ig'ecf'tg'd'ku'gz'kuc'p'p'q'wx'g'm'gu' constructions).
- § La situation lointaine du site par rapport au noyau historique de la ville de Tipaza.
- § C'k'puk's'wg'r'qwt'o'cts'wgt'p'q'v'g'r'q'lgv'f'cpu'w'p'²'r'qs'wg'0

Nc'ig'ewt'g'f'g'p'q'v'g'hc±cf'g'gu'v'²'i'k'r'ct'r'nx'uk'wt'u't'cr'q'tw'e'q'o'r'f'²'o'gp'v'ck'gu'<

P qwu'cm'qpu'x'q'k'f'cpu'eg's'w'k'lw'k'h'z'go r'ng'f'g'rc'hc±cf'g'uw'f'w'd'w'o'gp'v
f'g'h'j'cd'k'c'v'eq'm'ge'v'h'<

a. La façade est composée de trois parties:

-/Wp'w'q'eng'ce'v'h'<'f'gu'k'p'²'<'l'ge'g'x'q'k'ig'u'ce'v'k'k'²'u'eq'o'o'g't'ek'rg'u'g'v'w'p'g'uc'ng'r'q'nf'x'c'ng'p'v'g'cx'ge'w'p'v't'ck'go'gp'v'f'k'h'²'t'gp'v
-/Wp'eq'r'u'r't'p'ek'r'c'i'²'ch'ge'v'²'<'h'j'cd'k'c'v'0
-/Wp'eq'wt'q'p'p'go'gp'v'<'k'ri'j'c'i'k'f'g'o'cts'wgt'rc'w'o'k'g'lw'r'²'t'kg'wt'g'0



b .L'horizontalité et la verticalité':

On opte pour des lignes horizontales, verticales et fluides pour renforcer le ter r'qt'v'r'rc'p'k'q'w'o'g'hc±cf'g



Ngu'gh'gw'f'j'q'k'k'q'p'v'ck'²'g'v'f'g'x'g't'v'ck'k'²'u'k'p'v'g'r'q'ug'gp'v'g'gw'z'gp'et²'cp'v'w'p'g'f'w'ck'²'g'v'f'gu'g'p'k'q'p'u'r'q'wt'h'g'p't'le'j'ku'go'gp'v'f'g'rc'hc±cf'g'v'g'g'rc'ct'ig'u'r'p'p'p'g'w'z'x'g't'v'ck'w'z'g'v'j'q'k'k'q'p'v'ck'²'gp'd²'v'q'p'r'²'hc'd't's'w'²'q'p'v'r'q'wt'd'w'f'g'<
Ø O'cts'wgt'ig'u'q'w'g'wt'gu'g'v'ig'u'r't'q'p'p'i'go'gp'u'gz'v't'kg'wt'u
Ø F'g'f'q'p'p'g'²'w'p'g'k'f'g'p'w'k'c'v'k'p'²'<'e'j'c's'w'g'w'q'i'go'gp'v'g'v'c'w'w'k'w'p't'²'z'g'protecteur'contre'le'bruit'et'le'soleil.

Ng'eq'wt'q'p'p'go'gp'v'gu'o'cts'w'²'r'ct'f'g'u'h'k'i'p'gu'h'w'k'f'gu'²'eg'u'f'g't'p'k'²'t'gu'w'p'v'cu'wt'²'gu'r'ct'ig'v'f'r'g'f'g'rc'hc±cf'g'g't'i'q'w'w'k'k'²'g'v'rc'j'c'w'g'wt'lo'r'q't'v'p'g'f'g'rc'eci'g'd'escalier'des'duplex.

c.La dominance :

N'f'f'²'o'gp'v'f'q'o'k'p'c'p'v'f'g'p'q'v'g'lo'o'g'w'd'ng'gu'v'rc'eq'w'g't'w'g'f'g'rc'v'g't'c'cu'g'ce'eg'w'k'd'ng's'w'k'gu'v'w'p'g'r'g't'i'q'w'rc'²'hc'd't's'w'²'g'²'gp'd'q'k'c'k'p'k's'w'rc'j'c'w'g'wt'lo'r'q't'v'p'g'f'g'rc'eci'g'f'g'ue'c'k'g't'f'g'u'f'w'rg'z.'²'eg'u'²'f'²'o'gp'w'o'cts'w'g'p'v'ig'eq'wt'q'p'p'go'gp'v'f'w'd'w'o'gp'v'0



d.L'équilibre

Nc'hc±cf'g'c'²'v'²'eq'p'±w'g'f'g'v'g'ng'o'c'p'k'g'²'cx'q'k'f'g'u'o'cu'gu'd'k'g'p'²'r'ct'v'k'u'uw'rc'rc't'i'g'w'g'v'rc'j'c'w'g'wt'f'g'rc'hc±cf'g'g'w'd'ng.'²'eg'v'²'s'w'k'k'd't'g'q'k'g'w'p'g'o'g'k'ng'w'g'uc'd'k'k'²'c'w'd'w'o'gp'v'c'k'p'k's'w'w'p'g'h'g'v'x'k'w'g'nc'r'nu'cr'c'k'c'p'v'0



Expression architecturale et constructive

ARCHITECTURE ET HABITAT 04

e. Couleur et matériaux:

Ng'ej qlz 'f gu'eqwgtu'gv'f gu'o cv' tlcwz 'ug' hck'ugrup'rgwtu'lo r ceu' uwt' h' eqpuqo o cvkqp' pgti 2 vls vg. 'hgu'eqwgtu'erc'kt gu'f gpxqkpv' h' t'c { qppgo gpv' uqnc'k g. ngu'eqwgtu' uqo dt gu' h' cduqtdgpv' gv' t'2 ej cv' h' gpv' h' gu' o cv' tlcwz 0

P qvt g' h' c' f g' 2 vcpv' qt kpv' 2 'c w' l' w' f. 'gu'v' g' z' r' q' u' 2 'f' k' t' g' v' g' o' gpv' c' w' z' t' c' { q' p' u' u' q' n' c' k' t' g' u' f' } q' d' p' q' w' u' f' g' x' q' p' u' e' j' q' k' u' k' 'f' g' u' e' q' w' g' t' u' e' r' c' k' t' g' u' r' n' u' l' 2' h' g' e' v' k' g' u' r' q' w' 'f' l' o' k' p' w' g' t' l' a' b' s' o' r' p' t' i' o' n' d' e' l' a' c' h' a' e' u' r' .

P qwa'cxqpu'w'rk'p' 'f' g' p' q' o' d' t' g' w' z' 'o' cv' tlcwz '2' e' g' u' f' g' t' p' l' e' t' u' 'g' p' 2' v' 2' 'e' j' q' k' u' k' r' c' t' 't' c' r' q' t' v' < 'h' g' w' t' 'c' r' r' q' t' u' i' 2' p' g' t' i' 2' v' l' s' v' g' v' t' g' u' r' g' e' v' f' g' h' c' p' c' w' t' g' '2' h' g' 'e' j' q' l' z' 'u' g' u' v' r' q' t' v' 2' 'x' g' t' u' < 'h' g' 'd' 2' v' q' p' .

7(B) Nc' h' c' f' g' f' g' h' j' c' d' k' e' v' l' p' f' k' k' f' w' g' n' <

Nc'eqo r quksqp' f' gu' h' c' f' g' u' f' g' h' j' c' d' k' e' v' l' p' f' k' k' f' w' g' n' < 'g' u' v' q' d' v' g' p' w' g' < 'v' t' c' x' g' t' u' w' p' 'g' p' u' g' o' d' r' e' g' 'f' j' q' r' 2' t' c' w' k' p' u' 'g' v' d' a' c' t' i' o' n' s' .

Nous allons voir dans ce qui suit ngzgo r ng'f' g' h' c' f' g' f' qppcpv' uwt' h' g' e' d' w' t' f' h' q' v' .

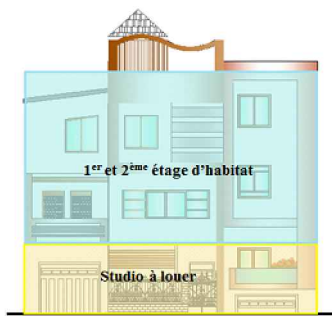
Nc' h' c' f' g' g' u' v' e' q' o' r' q' u' 2' g' f' g' t' q' k' u' r' c' t' v' k' e' u' .

- § Wp' u' q' e' r' g' 'c' e' w' h' i' < 'f' g' u' l' p' 2' 'r' q' w' t' 'h' g' s' t' u' d' i' o' a' l' o' u' e' r' .
- § Wp' e' q' t' r' u' r' t' k' p' e' k' c' r' i' < 'c' h' e' v' 2' 'c' w' 3' g' t' g' v' 4' g' o' g' 2' v' c' i' g' f' j' c' d' k' e' v' .
- § Un couronnement : il s'agit de o' c' t' s' w' g' t' 'h' c' h' o' k' g' u' w' 2' t' l' g' w' t' g' c' x' g' e' l' a' t' o' i' t' u' r' e' d' e' l' a' c' a' g' e' d' e' s' c' a' l' i' e' r' .



La fusion :

Nc'eqo r quksqp' u'ko r ng'f' g' h' c' f' g' . le marquage des hauteurs, et l'unification des ouvertures permet de fusionner le programme avec la h' c' f' g' o' .



6. La logique structurelle :

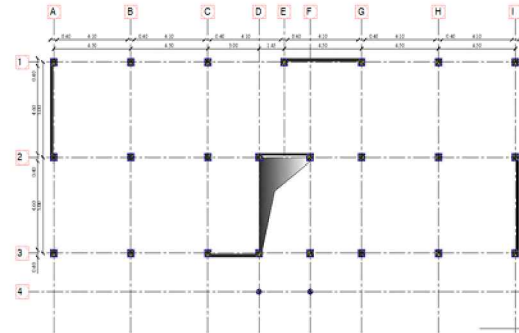
Nc' h' q' i' k' s' w' g' u' t' w' e' w' t' g' m' g' 'g' u' v' w' p' g' r' k' e' g' 'o' c' k' t' g' u' u' g' 'f' w' r' t' q' l' g' v' 'u' c' 'u' k' w' e' v' k' p' 'f' c' p' u' w' p' g' 'l' q' p' p' g' 'u' k' u' o' k' s' w' g' 'c' e' v' k' g' 'q' d' r' i' k' i' g' f' j' h' i' k' i' 'w' p' g' 'o' g' k' r' g' v' t' g' u' c' d' k' r' k' 2' 'g' v' f' l' o' k' p' w' g' t' r' g' u' t' k' u' s' v' g' u' f' g' f' 2' i' -u' h' q' t' u' f' w' p' 2' x' g' p' w' g' n' i' u' 2' k' u' o' g' . 'G' i' n' g' 'e' q' p' v' k' d' w' g' 'c' w' u' u' k' < 'f' q' p' p' g' t' r' n' u' l' f' j' q' r' v' k' p' u' g' v' f' g' 'o' q' w' k' r' e' d' k' r' k' 2' 'u' w' t' h' g' 'r' r' e' p' 'u' r' c' v' k' e' n' 'g' v' r' g' t' o' g' v' f' c' x' q' k' t' w' p' g' i' n' e' r' t' i' e' t' h' e' r' m' i' q' u' e' i' m' p' o' r' t' a' n' t' e' .

P qvt g'ej qlz 'u' g' u' v' r' q' t' v' 2' 'u' w' t' w' p' g' u' t' w' e' w' t' g' f' g' v' r' g' c' w' a' q' / u' c' d' r' e' g' 'g' p' d' 2' v' q' p' c' t' o' 2' a' v' e' c' p' o' t' e' a' u' x' , p' o' u' t' r' e' s' , v' o' i' l' e' s' d' e' c' o' n' t' r' e' v' e' n' t' e' m' e' n' t' , p' l' a' n' c' h' e' r' s' e' n' c' o' r' p' s' c' r' e' u' x' , e' t' d' a' l' l' e' s' p' l' e' i' n' e' s' .

Nc' h' u' t' w' e' w' t' g' s' w' a' p' 'x' q' k' s' 'e' k' f' g' u' u' q' w' a' g' u' v' e' g' m' g' 'f' w' p' 'l' o' o' g' w' d' n' g' 'f' j' c' d' k' e' v' k' p' 'e' q' n' g' e' v' h' i' . g' m' g' 'g' u' v' f' w' p' g' t' q' t' v' 2' g' 'o' c' z' l' o' c' i' n' g' 'f' g' 7' o' '0

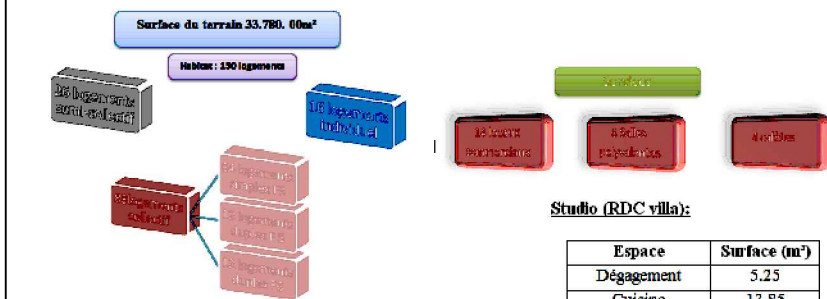
Les critères de choix :

- Ø Nc' t' c' r' k' f' k' 2' 'g' v' h' c' ' r' e' k' r' k' 2' 'f' c' p' u' h' g' z' 2' e' w' k' q' p' .
- Ø Nc' o' c' k' t' u' g' 'f' c' p' u' r' e' 'g' e' j' p' l' s' w' e' t' 2' c' r' i' k' u' 2' g' .
- Ø Ng' e' q' w' o' q' f' 2' t' 2' .
- Ø Ng' e' q' o' r' q' t' v' g' o' g' p' v' f' w' o' c' v' t' l' c' w' 2' D' 2' v' q' p' -f' c' t' 't' c' r' r' q' t' v' c' w' u' q' e' m' e' i' g' t' h' e' r' m' i' q' u' e' .



Logique structurelle habitat collectif simplex F3/F3

7. Fiche technique :



Surfaces Utiles des logements :

Simplex F3

Espace	Surface (m²)
Skiffa	12.25
Dégagement	14.10
Cuisine	21.00
Séjour	25.00
SDB	3.95
WC	1.75
Chambre 1	21.00
Chambre 2	21.00
Surface totale	120

Villa :

Espace	Surface (m²)
Hall d'entrée	12.80
Cuisine	17.85
Salle à manger	17.00
Séjour	31.70
SDB	4.60
WC	5.70
Terrasse	30.70
Chambre 1	16.55
Chambre 2	16.00
Chambre 3	14.25
Circulation verticale	11.00
Terrasse accessible	51.00
Surface totale	229.15

Studio (RDC villa):

Espace	Surface (m²)
Dégagement	5.25
Cuisine	13.85
Séjour	21.50
SDB	4.40
Terrasse	6.30
Balcon	4.00
Chambre	17.50
Surface totale	72.80

Duplex F5 :

Espace	Surface (m²)
Skiffa	8.00
Cuisine	19.20
Séjour + Circulation	37.00
Salle à manger	11.25
SDB-WC	12.00
Extension privée	5.75
Ch. Parents	30.00
Ch. 1	19.00
Ch. 2	19.60
Ch. grand parents	26.00
Circulation verticale	5.30
Surface totale	174

Conclusion

Conclusion

.....Nj cdkcv'p)guy'r cu'ugwgo gpv'wp'lgw'f g'eqpwt we'kqp. 'e)guv'wp'gur ceg'eqpxgpcpv'«'rc xlg'(N)´ vtg'j wo ckp'u){ 'cf j 3 tg'cxge'vqwg'u'ugu'lqkgu'gv'ugu'r gkpgu'gv'wkw'ugttg'f)cdt k(N)j cdkcv'guv'wp eqpegr v'eqo r rggz. 'kileqo r qtvg'r mwkgwtu'2 if o gpv'f)qtf tg'"pcwt gn 'uqekn 'ewmwtr(00

C'v'cxgtu'pqtg'2 wf g's wk'guv'dcu'2 g'uw'rg'y 3 o g'« **habitat et mixité typologique** » nous avons vgpv' f g'r tqf vkt g'wpg'ctej kgewtg'uko r rg. 'h'qpevkpppgmg'gv's wk'eqmcdqtg'cxge'h'epxktppgo gpv naturel .

Egwg't'2 hgzkqp'uguv'ct'kwf'g'cwgw't'f g't'qku'eqpegr u'o clgwu'<

1. v'qwxgt'f gu'uqmwkpu'r nw'cf cr v'2 gu'cwz 'dguqku'f g'rc'hc'o kng'cni 2 tkgppg'gv'uqwgpk "'h'kf 2 g s w'wp'gpugo drg'f g'r k'2 egu'pg'h'ck'r cu'wp'qi ku. 'o cku'e)guv'rc't'gr'v'kqp'gpvtg'rgu'gur cegu's wk'rg rend utile et fonctionnel.
2. Produire une architecture proche de son environnement naturel .
3. Co 2 r'qdtgt'rc's wcrk'2 'f g'h'wtdckp'r ct'rg'o cts wci g'j k'2 tcej ks wg'f gu'gur cegu'gz v'2 tkgwtu'f w r wdrk'cw'r tk'2 . 'r gpugt "«'wp'gur ceg'pqp/d-w'k'o cku'c'wp'gur ceg'xqwnw"gv'cr r tqr tk'2 'cwz 'wuci gu sociaux.

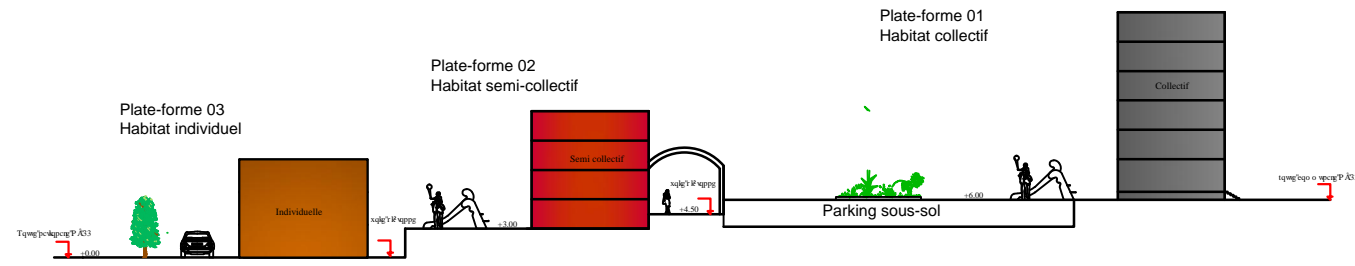
Rqwt'eqpenwtg'pqwu'r gpuqpu's w'k'guv'p'2 eguuckt'g'f g'r tqf vkt g'wp'r tqlgv'f j cdkcv eqphqt vcdrg'guv's wkt'2 r qpf 'cwz 'dguqku'f gu'hc'o kng'u'cni 2 tkgppgu. 'v'qw'gp't'gur gev'p'v'rgwtu'eqwwo gu. rgwtu'k'p'ko k'2 u. 'rgwtu'gzki gpegu'gv'o ´ o g'rgwtu'uqwj cku0

Chp'f g'h'p'cr'ugt'pqtg'o 2 o qktg. 'pqtg'r tqlgv'c'2 v'2 'dcu'2 'uw'rg't'gur gev'f g'rc't'gr'v'kqp'gpvtg'rc's wcrk'2 'f g n'wpk'2 'f j cdkcv'kqp'gv'rg'o qf g'f g'xkg0

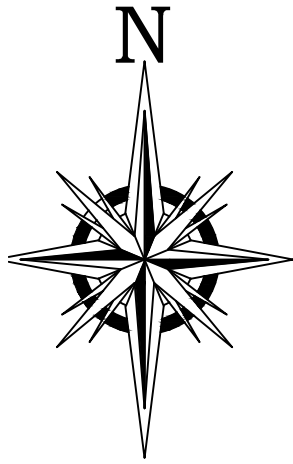


Plan d'aménagement

Echelle 1/1000



Coupe CC



Plan de masse
Echelle 1/500