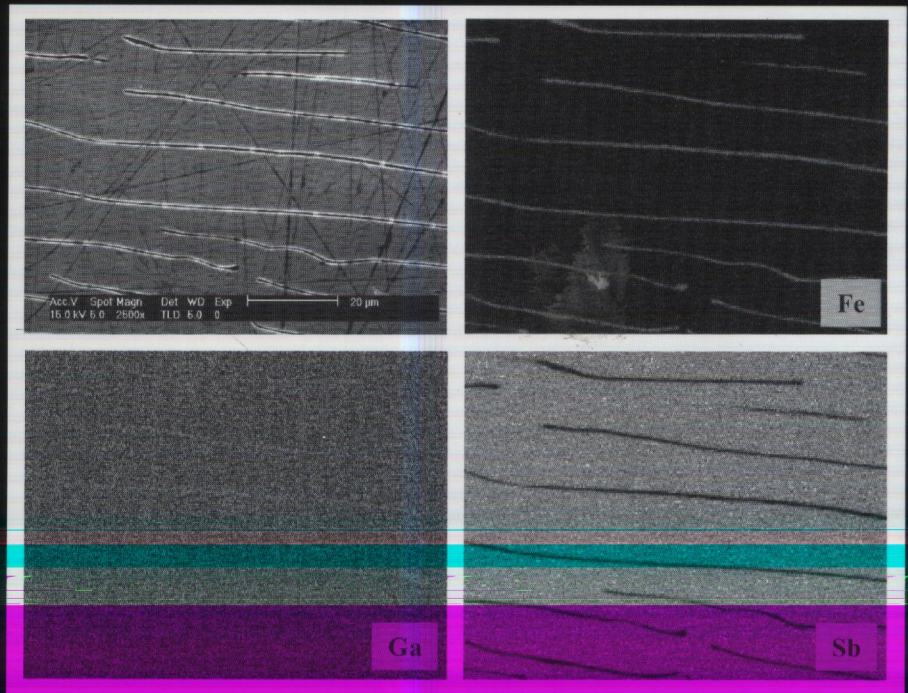


Applied Physics

Volume 36 Number 21 7 November 2003

Online: www.iop.org/journals/jphysd



(Continued from outside back cover)

2692 Inception behaviour of pulsed positive corona in several gases

E M van Veldhuizen and W R Rutgers

APPLIED SURFACES AND INTERFACES

2697 Surface roughness effects on the transmission of Gaussian beams by anisotropic parallel plates

F Zomer

2705 The optical properties of ZnO films grown on porous Si templates

Y L Liu, Y C Liu, H Yang, W B Wang, J G Ma, J Y Zhang, Y M Lu, D Z Shen and X W Fan

2709 Deposition and structure of W-Cu multilayer coatings by magnetron sputtering

C Wang, P Brault, C Zaepffel, J Thiault, A Pineau and T Sauvage

STRUCTURE AND PROPERTIES OF MATTER

2714 Investigations on the variable large bandgap semiconductor compound HgBrI

G A Stanciu, S G Stanciu, M Daviti, K M Paraskevopoulos and E K Polychroniadis

2719 Method of computerized glow curve deconvolution for analysing thermoluminescence

T Sakurai and R K Gartia

2725 Alloying effects on elastic properties of TiN-based nitrides

K Chen, L R Zhao, J Rodgers and J S Tse

INTERDISCIPLINARY PHYSICS AND RELATED AREAS OF SCIENCE AND TECHNOLOGY

2730 Stresses in a thin, circular aeolotropic plate subjected to uniform lateral load

J A Salem and J M Manderscheid

2738 Acoustic profilometry within polymers as performed by Brillouin microscopy

R Sanctuary, Ravi Bactavatchalou, Ulrich Müller, W Possart, P Alnot and J K Krüger

2743 Ion transport across the gas-liquid interface in xenon

A J Walters

2750 Peltier heat measurements at a junction between materials exhibiting Fermi gas and Fermi liquid behaviour

V L Kuznetsov, L A Kuznetsova and D M Rowe

Journal of Physics D: Applied Physics

Volume 36

Number 21

7 November 2003

RAPID COMMUNICATIONS

- L109** Fabrication of a carbon nanotube-based gas sensor using dielectrophoresis and its application for ammonia detection by impedance spectroscopy
J Suehiro, G Zhou and M Hara
- L115** Stress-induced optical anisotropy in polycrystalline copper studied by reflection anisotropy spectroscopy
R J Cole, S Kheradmand, D D Higgins, F Madani, B F Macdonald, V Koutsos and J R Blackford

PAPERS

APPLIED MAGNETISM, MAGNETIC MATERIALS AND SUPERCONDUCTIVITY

- 2601** Localized magnetic modification of permalloy using Cr⁺ ion implantation
L Folks, R E Fontana, B A Gurney, J R Childress, S Maat, J A Katine, J E E Baglin and A J Kellock

PHOTONICS AND SEMICONDUCTOR DEVICE PHYSICS

- 2605** Electron paramagnetic resonance study of Ag⁰ atoms and Ag²⁺ ions in β -BaB₂O₄ nonlinear optical crystals
W Hong, D Perlov and L E Halliburton
- 2612** Analysis of strain-modified confinement potentials in vertically stacked InAs/GaAs quantum dot nanostructures with varying stacking period
H Shin, Y-H Yoo and W Lee
- 2619** Modelling the energy dependence of helium ion TL fluence response using the extended track interaction model
D Satinger, O Avila and Y S Horowitz
- 2627** Features of electron and phonon processes in GaSb-FeGa_{1.3} eutectics
M I Aliyev, A A Khalilova, D H Arasly, R N Rahimov, M Tanoglu and L Ozyuzer
- 2634** Highly periodic, three-dimensionally arranged InGaAsN : Sb quantum dot arrays fabricated nonlithographically for optical devices
N Kouklin, H Chik, J Liang, M Tzolov, J M Xu, J B Heroux and W I Wang

EXPERIMENTAL, COMPUTATIONAL AND THEORETICAL PARTICLE BEAM AND PLASMA SCIENCE

- 2639** Measurements and modelling of axial emission profiles in abnormal glow discharges in argon: heavy-particle processes
D Marić, P Hartmann, G Malović, Z Donkó and Z Lj Petrović
- 2649** Effect of the microstructure of electrode materials on arc cathode spot dynamics
Y Wang, C Zhang, H Zhang, B Ding and K Lu
- 2655** Electronegative plasmas diluted by rare gases
R N Franklin
- 2660** The dual frequency radio-frequency sheath revisited
R N Franklin
- 2662** Optical and electrical diagnostics of a non-equilibrium air plasma
X P Lu, F Leipold and M Laroussi
- 2667** Low current mode of negative coronas: mechanism of electron emission
M Jovanović, A Vukobratović, B Petrović and M Burić
- 2673** Onset corona fields and electrical breakdown criteria
J J Lowke and F D'Alessandro
- 2683** Two-dimensional numerical modelling of the cathode-directed streamer development in a long gap at high voltage
S V Pancheshnyi and A Yu Starikovskii

(Continued on inside back cover)