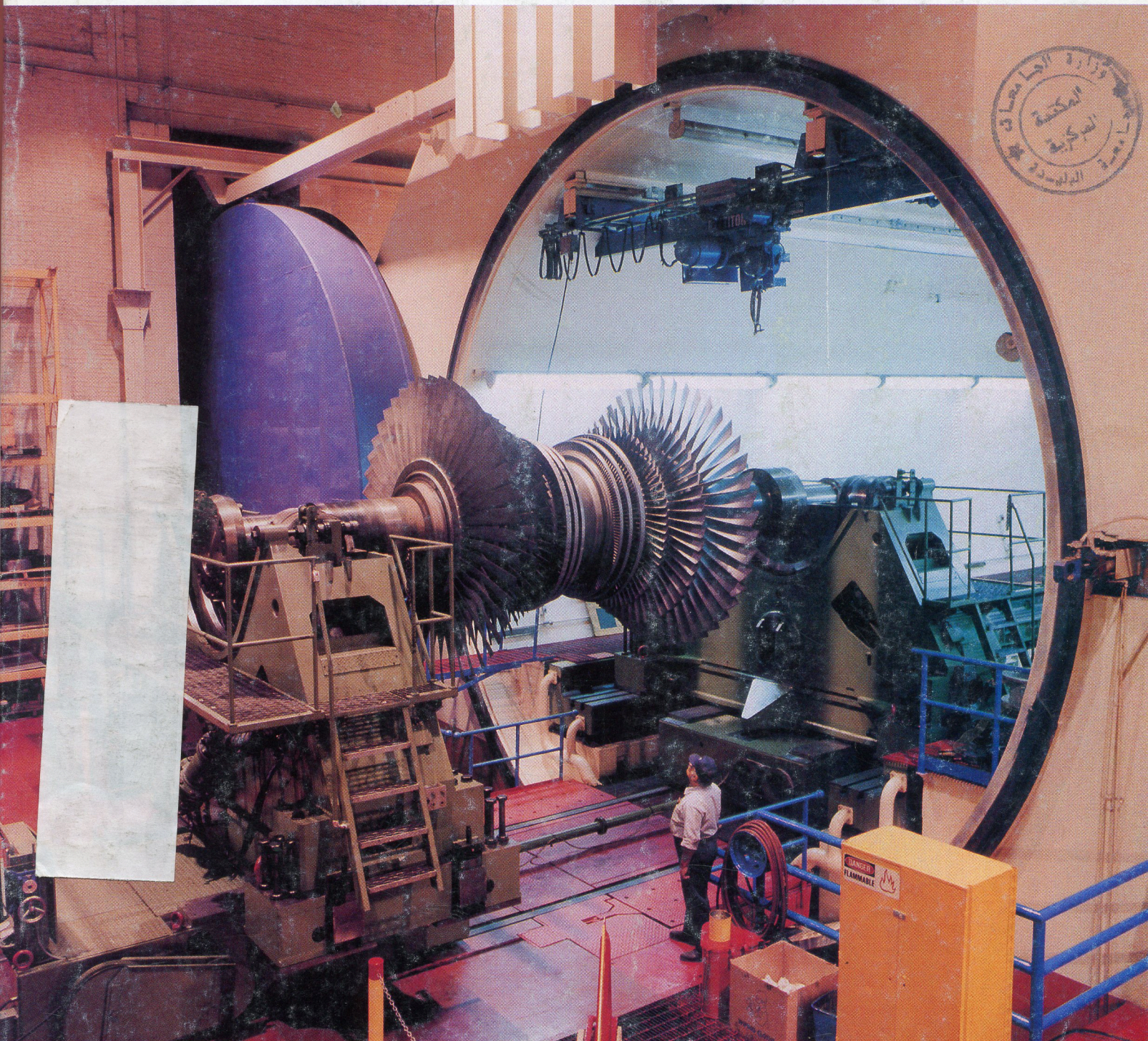


UNION DU PRÉT

INTERNATIONAL

Turbomachinery

Covering the selection, operation, maintenance and overhaul of rotating equipment



SPECIAL SECTION: Maintenance, Repair, Overhaul
EXCLUSIVE: New Dresser-Rand Compressor Line

Turbomachinery Publications

Established in 1959

FoundersG. Renfrew Brighton
R. Tom Sawyer**Turbomachinery International****Publisher**

Skip Ruch, 114

Editor

Thomas Barker, 115

European Editor

Eric Jeffs

Editorial Assistant

Becky Schaefer

Contributing EditorsWilliam E. Forsthoffer
Walter R. May
Diane Raffo
Robert S. Seeley**Art Department Director**

Hans Gschliesser, 146

Assistant Art Director

Catherine Wakeman, 157

President

James E. Jones

Circulation Manager

Arthur Heilman, 136

Director of Production

Frances Salamon, 109

Production Manager

Peggy Eadie, 138

Telephone extensions are listed next to the names above

Editorial Offices50 Day Street, P.O. Box 5550
Norwalk, Connecticut, U.S.A. 06856-5550
Tel: (203) 853-6015
Fax: (203) 852-8175
Telex: 353706 BUSJOURNORWK
Cable: TURBOMACHI Norwalk, CT U.S.A.**European Editor - Eric Jeffs**

Tel: [44]1494-864-383 Fax: [44]1494-890-090

Affiliated Research FirmForecast International
President: Ed Nebinger
Power Systems Analyst: David J. Franus
22 Commerce Road
Newtown, Connecticut, U.S.A. 06470
Tel: (203) 426-0800
Fax: (203) 426-4262**Subscription Rates**U.S.: 1 year \$49; 2 years \$75.
Canada: 1 year \$75 (Canadian);
2 years \$98 (Canadian).
Foreign (Sea Mail): 1 year \$60.
Foreign (Air Mail): 1 year \$100.
Claims for undelivered copies not honored after
30 days from publication (90 days for overseas).

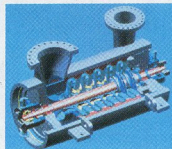
BPA Turbomachinery International is published for key management and engineering personnel in turbomachinery-using industries. Our editorial content is aimed at keeping our readers informed of all important developments in the field. We provide concepts, technical details and business developments to enable our readers to share the experiences of others as to systems, approaches and equipment that have proven valuable, and to stimulate new approaches to energy conversion. Publisher makes no guarantees or recommendations concerning any process, procedure or device described herein. Turbomachinery International is published seven times a year (six magazine issues and one handbook) by Business Journals, Inc. Executive and Editorial offices, 50 Day Street, Norwalk, Connecticut, U.S.A. 06854. Volume 36, Number 6. Copyright 1995 by Business Journals, Inc. Second Class postage paid in Norwalk, Connecticut and at additional mailing offices. (USPS 871-500. ISSN 0149-4147). Turbomachinery International is available on microfilm from University Microfilms International, 300 North Zeeb Road, Ann Arbor, Michigan, U.S.A. 48106. Postmaster: Please send address changes to Circulation Manager, Turbomachinery International, P.O. Box 5550, Norwalk, CT 06856-5550 U.S.A.

Turbomachinery

I N T E R N A T I O N A L

Features

12 Dresser-Rand DATUM: The New Benchmark in Compressors?



At the Turbomachinery Symposium, Dresser-Rand will formally introduce the DATUM compressor line.

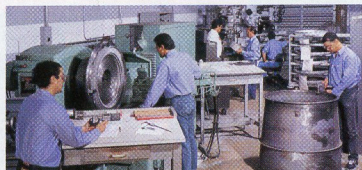
16 Two Years of 501F Operation at Florida Power & Light

Florida Power & Light have racked up over 16,000 hours operation on four Westinghouse 501F gas turbines at their repowered Lauderdale station.
by Eric Jeffs

20 Siemens: a Source of Power in China

The Rizhao and Yangshupu plants are the latest two in Siemens' growing portfolio of power projects in China.

27 Maintenance Muscle in Miami



A profile of Ground Turbine Technology, a Miami, Florida-based industrial gas turbine repair specialist.
by Skip Ruch

30 Smile, You're on ^{Turbo} Camera

Instant Documentation using cameras allows maintenance, repair and overhaul companies to "roll on" with the job at hand.

32 Radial-Fit Bolts Save Millions

Several power stations in England and the US which installed radial fit coupling bolts to turbines five years ago are now finding dramatic savings in outage costs.
by Eric Jeffs

36 Experimental Nozzle Has Coatings "Rainbow"

The best way to compare coatings is to put several on the same component in the same engine.

42 Low-Pressure Plasma Spray for Blade and Vane Repair



Low-pressure plasma spraying can, in some cases, be used to repair blades and vanes damaged by hot corrosion, oxidation and erosion.

by Robert P. Harrison, Chromalloy HIT, Ltd

46 Gas Turbine Oil Systems

Proper care for combustion turbine lubrication systems.

by Winter Calvert, Stewart & Stevenson Services, Inc

50 Application of Squeeze Film Dampers

The basics of design and use of squeeze film dampers in supercritical turbines.

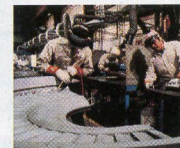
by Fouad Y. Zeidan, KMC

55 Cost-Effective Reliability- a Corporate Message for the '90's

The input of the End User is vital when ordering new equipment or repairing/overhauling existing equipment.

by William E. Forsthoffer

59 Quality: Don't Stay Inside the Lines



ISO 9000 certification can require changes in the way that a company operates.

by Tom Newhouse

Departments

- 4 Contracts and Orders
- 8 Business/Management Update
- 62 New Products
- 63 Industry News
- 66 Advertiser Index

On the Cover:

Technicians at Siemens Power Corporation overhaul a steam turbine rotor for the Jeffrey Energy Center (of St Marys, Kansas, USA).