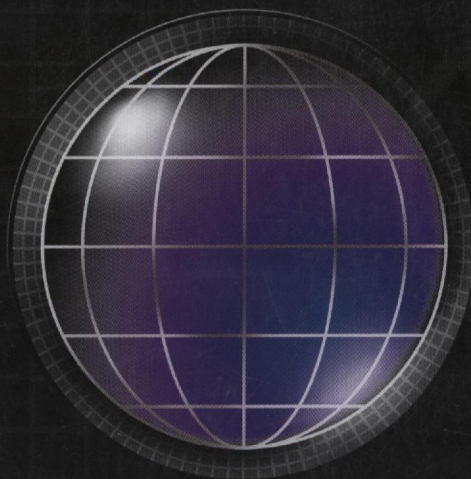
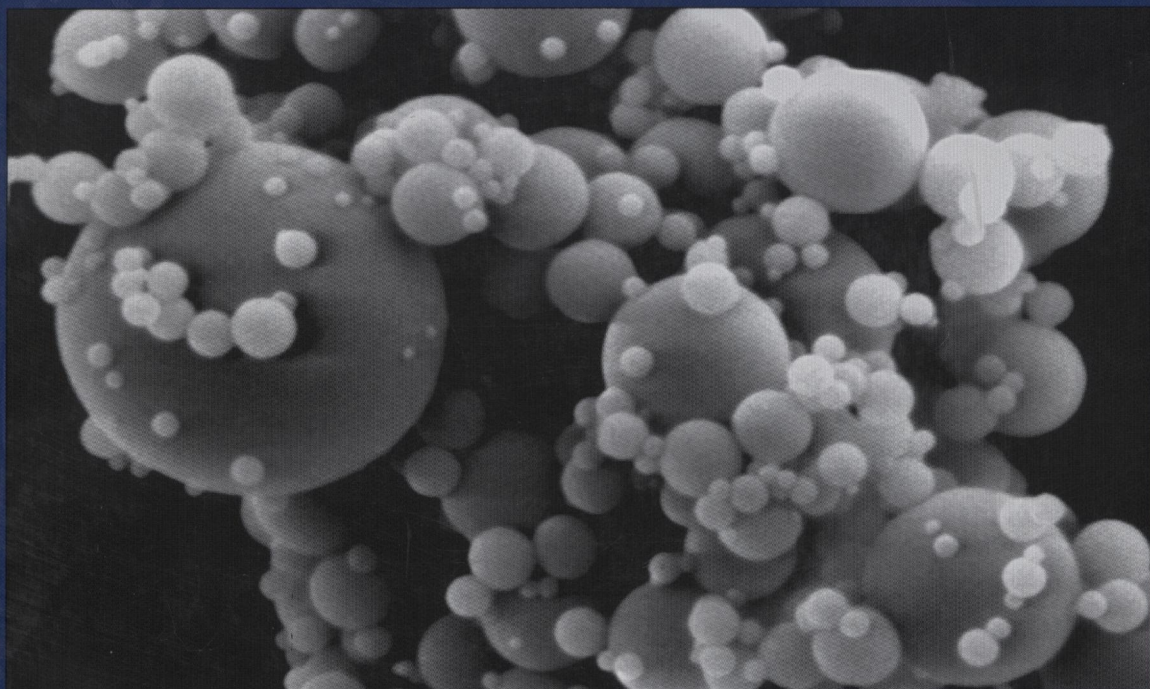
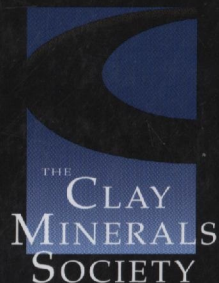


CLAYS AND CLAY MINERALS[®]



www.clays.org/journal/journal.html



Participating Publisher
GSW
www.GeoScienceWorld.org

VOLUME 57

2009

Clays and Clay Minerals

Volume 57 Number 2 April 2009

Contents

The transformation of synthetic hectorite in the presence of Cu(II) <i>Håkon Fischer, Peter G. Weidler, Bernard Grobety, Jörg Luster, and Andreas U. Gehring</i>	139
Swelling behavior of Na- and Ca-montmorillonite up to 150°C by <i>in situ</i> X-ray diffraction experiments <i>Shoji Morodome and Katsuyuki Kawamura</i>	150
Enhancement of dissolution rates of amorphous silica by interaction with amino acids in solution at pH 4 <i>Motoharu Kawano, Tamao Hatta, and Jinyeon Hwang</i>	161
Chemostratigraphic correlation of sediments containing expandable clay minerals based on ion exchange with Cu(II) triethylenetetramine <i>Tomáš Grygar, Jaroslav Kadlec, Anna Žigová, Martin Mihaljevič, Tereza Nekutová, Richard Lojka, and Ivo Světlík</i>	168
Crystallographic features and cleavage nanomorphology of chlinochlore: specific applications <i>Giovanni Valdré, Daniele Malferrari, and Maria Franca Brigatti</i>	183
Interlayer conformations of intercalated dodecyltrimethylammonium in rectorite as determined by FTIR, XRD, and TG analyses <i>Zhaohui Li and Wei-Teh Jiang</i>	194
Bacteria-clay interaction: structural changes in smectite induced during biofilm formation <i>Alexandra Alimova, A. Katz, Nicholas Steiner, Elizabeth Rudolph, Hui Wei, Jeffrey C. Steiner, and Paul Gottlieb</i>	205
The role of clay minerals in the preservation of organic matter in sediments of Qinghai Lake, NW China <i>Bingsong Yu, Hailiang Dong, Hongchen Jiang, Guo Lv, Dennis Eberl, Shanying Li, and Jinwook Kim</i>	213
Polarized ATR-FTIR investigation of Fe reduction in the Uley nontronites <i>Bryan R. Bzdek and Molly M. McGuire</i>	227
Simultaneous incorporation of Cr, Zn, Cd, and Pb in the goethite structure <i>Navdeep Kaur, Markus Gräfe, Balwant Singh, and Brendan Kennedy</i>	234
Anisotropy of magnetic susceptibility study of kaolinite matrix subjected to biaxial tests <i>Aniruddha Sengupta</i>	251
Mineralogical and physicochemical investigation of Mg-smectite from Jbel Ghassoul, Morocco <i>Abdelaziz Benhammou, Boumediene Tanouti, Lahbib Nibou, Abdelrani Yaacoubi and Jean-Pierre Bonnet</i>	264
Melt synthesis and characterization of synthetic Mn-rich tainiolite <i>Alexander Baumgartner, Christian Butterhof, Sebastian Koch, Ruslan Mariychuk, and Josef Breu</i>	271
Forthcoming papers	278

Annual Sustaining Members, Patrons, and Benefactors of The Clay Minerals Society

Patrons

IMERYS
The Sorptive Minerals Institute (SMI)
Thiele Kaolin Company

Members

Chevron ETC
M-I Swaco
Wyo-Ben, Inc.

Individuals

Richard W. Berry
David L. Bish

John D. Bloch
Richard K. Brown
Wen-An Chiou
Michael L. Cummings
Randall T. Cygan
Ray E. Ferrell
Allanah Fitch
Will P. Gates
J. Reed Glasmann
Stephen Guggenheim
Necip Güven
Wayne Hudnall
Warren D. Huff

William D. Johns
Blair Jones
George H. Kacandes
David A. Laird
Robert H. Lander
Duane M. Moore
Joseph W. Stucki
James P. Talbot
Kenneth M. Towse
Don M. Triplehorn
Michael A. Velbel