

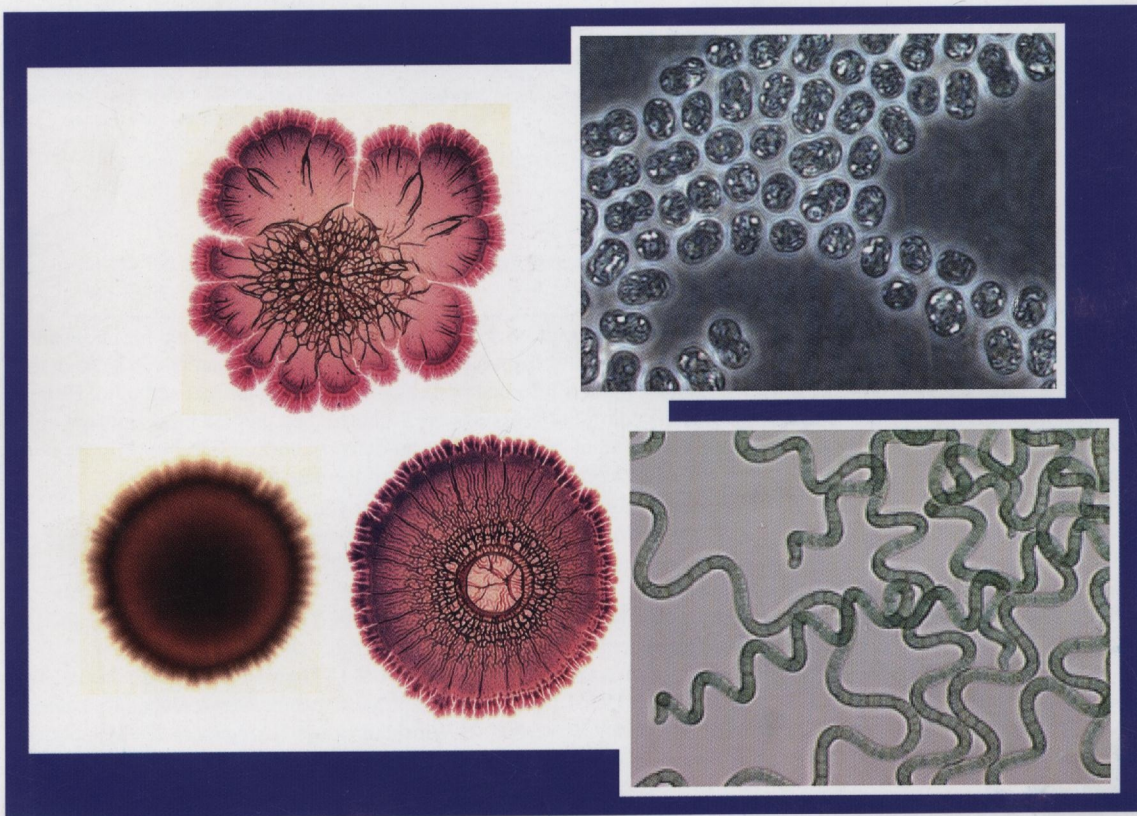


INSTITUT PASTEUR

ISSN 0923-2508

# *Research in* **Microbiology**

*Established in 1887 as the 'Annales de l'Institut Pasteur'*



ELSEVIER

Vol. 160

Cited/abstracted in: Biological Abstracts/Biosis, CNRS/Pascal, Current Contents (Life Sciences), Excerpta Medica/EMbase, Index Medicus/Medline, Science Citation Index, Scopus.

ORIGINAL ARTICLES

*Ecology and population dynamics*

**Occurrence of potentially pathogenic vibrios in final effluents of a wastewater treatment facility in a rural community of the Eastern Cape Province of South Africa**

E.O. Igbinosa, L.C. Obi, A.I. Okoh ..... 531

**Bacterial diversity and bioprospecting for cold-active enzymes from culturable bacteria associated with sediment from a melt water stream of Midtre Lovénbreen glacier, an Arctic glacier**

P.V. Vardhan Reddy, S.S. Shiva Nageswara Rao, M.S. Pratibha, B. Sailaja, B. Kavya, R.R. Manorama, S.M. Singh, T.N. Radha Srinivas, S. Shivaji ..... 538

**Detection of *Chlamydiae* from freshwater environments by PCR, amoeba coculture and mixed coculture**

D. Corsaro, D. Venditti ..... 547

*Physiology and metabolism*

**Mutational study of the role of N-terminal amino acid residues in tetrachlorohydroquinone reductive dehalogenase from *Sphingomonas* sp. UG30**

M. Habash, B.C.H. Chu, J.T. Trevors, H. Lee ..... 553

**Molecular characterization of the *alkB* gene in the thermophilic *Geobacillus* sp. strain MH-1**

Y.-C. Liu, T.-T. Zhou, J. Zhang, L. Xu, Z.-H. Zhang, Q.-R. Shen, B. Shen ..... 560

**Stress responses in *Prochlorococcus* MIT9313 vs. SS120 involve differential expression of genes encoding proteases ClpP, FtsH and Lon**

G. Gómez-Baena, O.A. Rangel, A. López-Lozano, J.M. García-Fernández, J. Diez ..... 567

**A novel mutation spatially remote from the G-domain in IF2 affects the cold stress adaptation of *Escherichia coli***

D. Rath, S.H. Mangoli, S.K. Mahajan, N. Jawali ..... 576

**Reduced activity of glutamine synthetase in *Rhodospirillum rubrum* mutants lacking the adenylyltransferase GlnE**

A. Jonsson, S. Nordlund, P.F. Teixeira ..... 581

*Antimicrobial resistance*

**Phylogroups, virulence determinants and antimicrobial resistance in *stx*<sub>2</sub> gene-carrying *Escherichia coli* isolated from aquatic environments**

C. Garcia-Aljaro, E. Moreno, A. Andreu, G. Prats, A.R. Blanch ..... 585

**Bacteriocin production by *Staphylococcus aureus* involved in bovine mastitis in Brazil**

H. Ceotto, J.S. Nascimento, M.A.V.P. Brito, M.C.F. Bastos ..... 592

*Microbe environment interactions*

***Methanosaeta* sp., the major archaeal endosymbiont of *Metopus* sp.**

N. Narayanan, B. Krishnakumar, V.N. Anupama, V.B. Manilal ..... 600

**Evidence for a plant-associated natural habitat for *Cronobacter* spp.**

M. Schmid, C. Iversen, I. Gontia, R. Stephan, A. Hofmann, A. Hartmann, B. Jha, L. Eberl, K. Riedel, A. Lehner ..... 608