

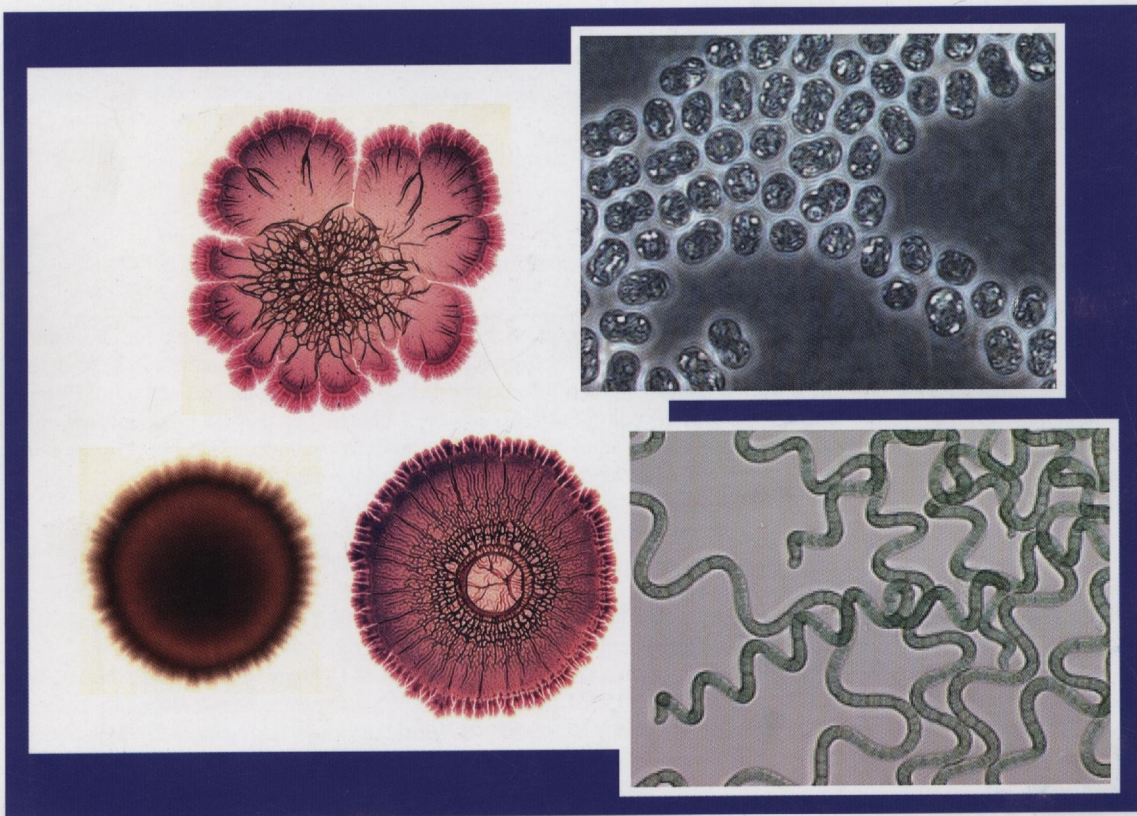


INSTITUT PASTEUR

ISSN 0923-2508

# *Research in* **Microbiology**

*Established in 1887 as the 'Annales de l'Institut Pasteur'*



ELSEVIER

Vol. 160





Cited/abstracted in: Biological Abstracts/Biosis, CNRS/Pascal, Current Contents (Life Sciences), Excerpta Medica/EMbase, Index Medicus/Medline, Science Citation Index, Scopus.

**REVIEW****Homologous recombination and dynamics of rhizobial genomes**

Ma del Carmen Orozco-Mosqueda, J. Altamirano-Hernandez, R. Farias-Rodriguez, E. Valencia-Cantero, G. Santoyo ..... 733

**ORIGINAL ARTICLES***Ecology and population dynamics***Terminal-restriction fragment length polymorphism analysis of biphenyl dioxygenase genes from a polychlorinated biphenyl-polluted soil**

S. Capodicasa, S. Fedi, M. Carnevali, L. Caporali, C. Viti, F. Fava, D. Zannoni ..... 742

**Quantitative PCR of *pmoA* using a novel reverse primer correlates with potential methane oxidation in Finnish fen**

T.T. Tuomivirta, K. Yrjälä, H. Fritze ..... 751

*Physiology and metabolism***Hydroxytyrosol from tyrosol using hydroxyphenylacetic acid-induced bacterial cultures and evidence of the role of 4-HPA 3-hydroxylase**

P.-P. Liebgott, A. Amouric, A. Comte, J.-L. Tholozan, J. Lorquin ..... 757

**Oxidation of elemental sulfur, tetrathionate and ferrous iron by the psychrotolerant *Acidithiobacillus* strain SS3**

D. Kupka, M. Liljeqvist, P. Nurmi, J.A. Puhakka, O.H. Tuovinen, M. Dopson ..... 767

**Exploring the acidotolerance of  $\beta$ -galactosidase from *Lactobacillus delbrueckii* subsp. *bulgaricus*: an attractive enzyme for lactose bioconversion**

M. Rhimi, N. Aghajari, B. Jaouadi, M. Juy, S. Boudebouze, E. Maguin, R. Haser, S. Bejar ..... 775

**Phenotypic changes in ciprofloxacin-resistant *Staphylococcus aureus***

L.R. Mesak, J. Davies ..... 785

*Pathogenic and non-pathogenic interactions***Identification of a polymorphic collagen-like protein in the crustacean bacteria *Pasteuria ramosa***

L. Mouton, E. Traunecker, K. McElroy, L. Du Pasquier, D. Ebert ..... 792

**RpoS- and Crp-dependent transcriptional control of *Salmonella* Typhi *taiA* and *hlyE* genes: role of environmental conditions**

J.A. Fuentes, M.R. Jofré, N.A. Villagra, G.C. Mora ..... 800

**Gene cloning and characterization of *Streptococcus intermedius* fimbriae involved in saliva-mediated aggregation**

T. Yamaguchi, M. Matsumoto, Y. Sugimoto, S. Soutome, T. Oho ..... 809

**Characterization of intestinal bacteria tightly bound to the human ileal epithelium**

S. Fakhry, N. Manzo, E. D'Apuzzo, L. Pietrini, I. Sorrentini, E. Ricca, M. De Felice, L. Baccigalupi ..... 817

*Proteomics***Differential immunoproteomics enables identification of *Metarhizium anisopliae* proteins related to *Rhipicephalus microplus* infection**

L. Santi, W.O. Beys da Silva, A.F.M. Pinto, A. Schrank, M.H. Vainstein ..... 824

**Proteomic analysis of *Marinobacter hydrocarbonoclasticus* SP17 biofilm formation at the alkane-water interface reveals novel proteins and cellular processes involved in hexadecane assimilation**

P.-J. Vaysse, L. Prat, S. Manganot, S. Cruveiller, P. Goulas, R. Grimaud ..... 829

**Proteomic investigation of enzymes involved in 2-ethylhexyl nitrate biodegradation in *Mycobacterium austroafricanum* IFP 2173**

E. Nicolau, L. Kuhn, R. Marchal, Y. Jouanneau ..... 838

Author index ..... 848

Keyword index ..... 852