

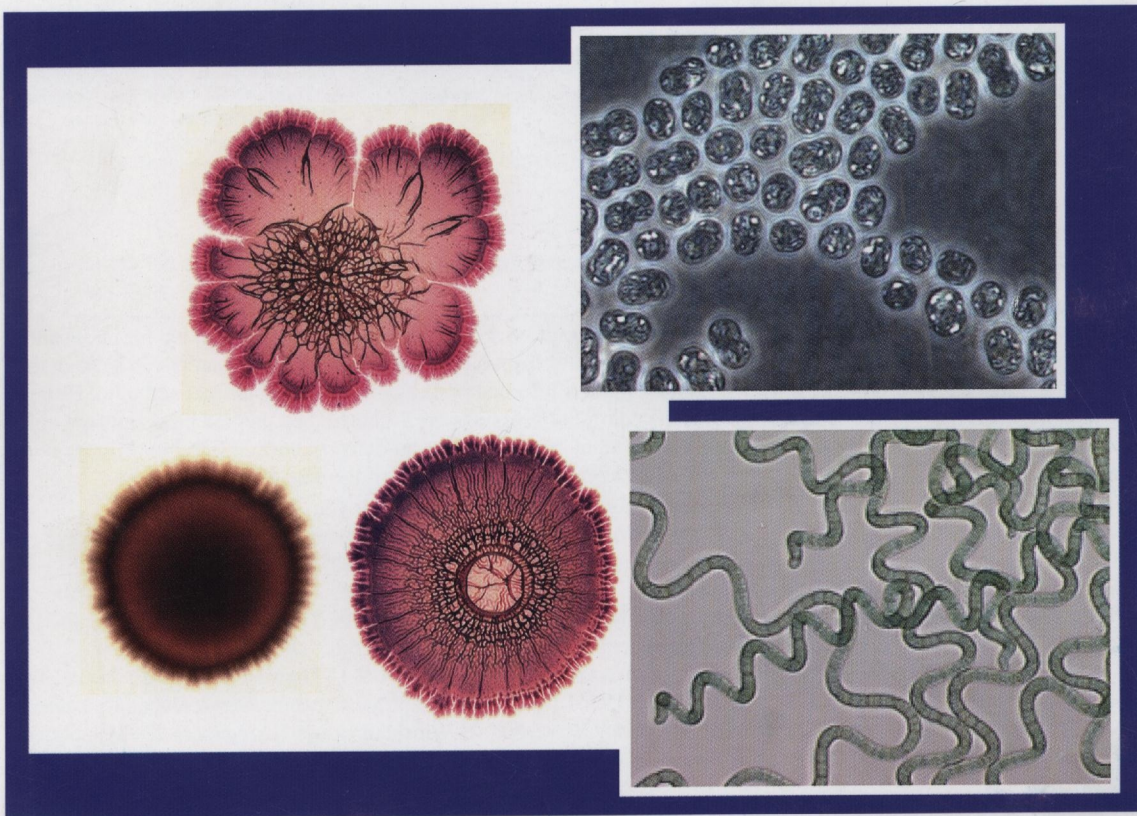


INSTITUT PASTEUR

ISSN 0923-2508

Research in **Microbiology**

Established in 1887 as the 'Annales de l'Institut Pasteur'



ELSEVIER

Vol. 160



Cited/abstracted in: Biological Abstracts/Biosis, CNRS/Pascal, Current Contents (Life Sciences), Excerpta Medica/EMbase, Index Medicus/Medline, Science Citation Index, Scopus.

ORIGINAL ARTICLES

Ecology and population dynamics

Effect of soil sample preservation, compared to the effect of other environmental variables, on bacterial and eukaryotic diversity

V.A. Tzeneva, J.F. Salles, N. Naumova, W.M. de Vos, P.J. Kuikman, J. Doling, H. Smidt 89

Heavy metal resistance of some thermophiles: potential use of α -amylase from *Anoxybacillus amylolyticus* as a microbial enzymatic bioassay

A. Poli, A. Salerno, G. Laezza, P. di Donato, S. Dumontet, B. Nicolaus 99

Characterization by culture and molecular analysis of the microbial diversity of a deep subsurface gas storage aquifer

O. Basso, J.-F. Lascourreges, F. Le Borgne, C. Le Goff, M. Magot 107

Physiology and metabolism

High salt stress in *Bacillus subtilis*: involvement of PBP4* as a peptidoglycan hydrolase

M.M. Palomino, C. Sanchez-Rivas, S.M. Ruzal 117

Microbe environment interactions

Cloning, purification and characterization of *Geobacillus stearothermophilus* V uroporphyrinogen-III C-methyltransferase: evaluation of its role in resistance to potassium tellurite in *Escherichia coli*

M.A. Araya, J.C. Tantaleán, J.M. Pérez, D.E. Fuentes, I.L. Calderón, C.P. Saavedra, R. Burra, T.G. Chasteen, C.C. Vásquez 125

***Bacillus subtilis* isolated from the human gastrointestinal tract**

H.A. Hong, R. Khaneja, N.M.K. Tam, A. Cazzato, S. Tan, M. Urdaci, A. Brisson, A. Gasbarrini, I. Barnes, S.M. Cutting 134

Use of quorum sensing inhibitors to interfere with biofilm formation and development in *Burkholderia multivorans* and *Burkholderia cenocepacia*

G. Brackman, U. Hillaert, S. Van Calenbergh, H.J. Nelis, T. Coenye 144

Molecular genetics and genomics

The role of AmpR in regulation of L1 and L2 β -lactamases in *Stenotrophomonas maltophilia*

C.-W. Lin, Y.-W. Huang, R.-M. Hu, K.-H. Chiang, T.-C. Yang 152

Presence of duplicate genes encoding a phylogenetically new subgroup of form I ribulose 1,5-bisphosphate carboxylase/oxygenase in *Mycobacterium* sp. strain JC1 DSM 3803

S.W. Park, E.H. Hwang, H.S. Jang, J.H. Lee, B.S. Kang, J.I. Oh, Y.M. Kim 159

Virus of prokaryotes

Genomic and proteomic characterization of a thermophilic *Geobacillus* bacteriophage GBSV1

B. Liu, F. Zhou, S. Wu, Y. Xu, X. Zhang 166