

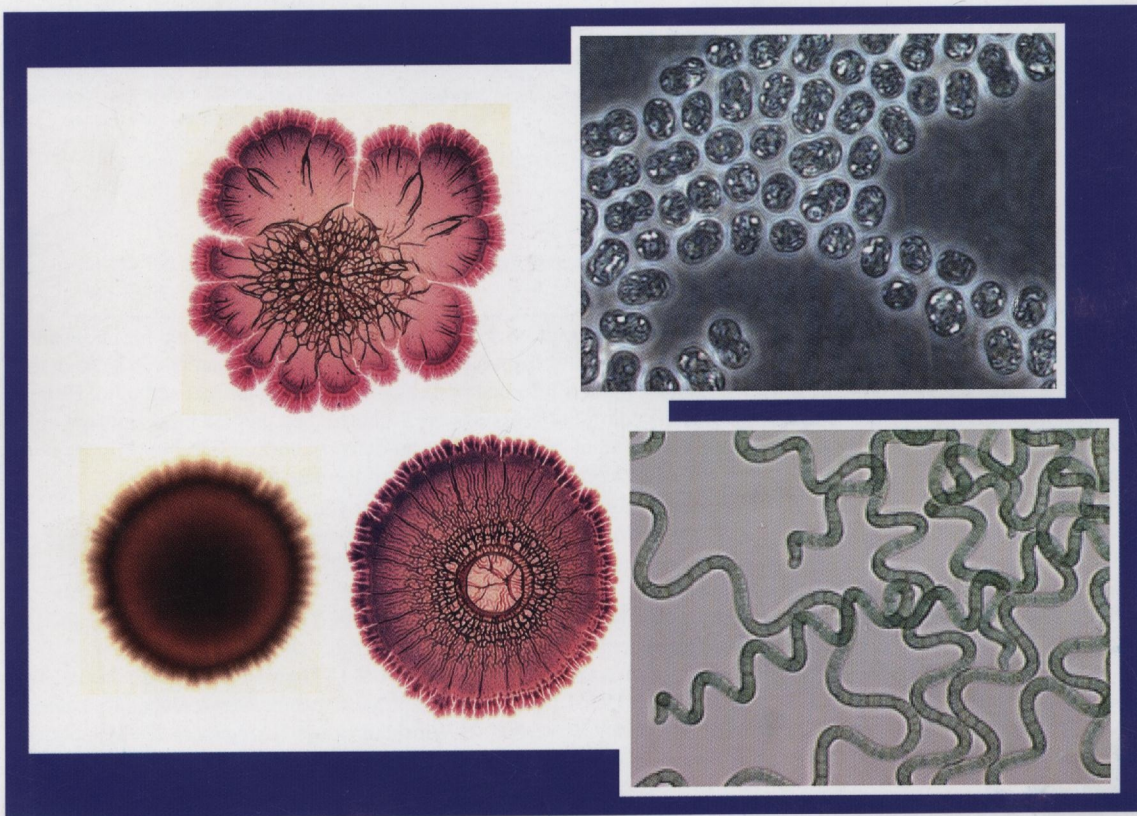


INSTITUT PASTEUR

ISSN 0923-2508

Research in **Microbiology**

Established in 1887 as the 'Annales de l'Institut Pasteur'



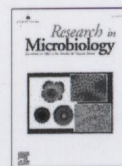
ELSEVIER

Vol. 160



Vol. 160, No. 3, April, 2009

CONTENTS



Cited/abstracted in: Biological Abstracts/Biosis, CNRS/Pascal, Current Contents (Life Sciences), Excerpta Medica/EMbase, Index Medicus/Medline, Science Citation Index, Scopus.

ORIGINAL ARTICLES

Ecology, phylogeny and population dynamics

- Diversity and abundance of ammonia-oxidizing bacteria in eutrophic and oligotrophic basins of a shallow Chinese lake (Lake Donghu)**
G.-Y. Chen, S.-L. Qiu, Y.-Y. Zhou 173

Physiology and metabolism

- Regulation of expression of the tricarballylate utilization operon (*tcuABC*) of *Salmonella enterica***
J.A. Lewis, L.W. Stamper, J.C. Escalante-Semerena 179

- Subinhibitory fluoroquinolone exposure selects for reduced beta-lactam susceptibility in methicillin-resistant *Staphylococcus aureus* and alterations in the SOS-mediated response**
P. Tattevin, L. Basuino, H.F. Chambers 187

- Inhibition of *Paenibacillus larvae* and *Ascosphaera apis* by *Bacillus subtilis* isolated from honeybee gut and honey samples**
D.C. Sabaté, L. Carrillo, M. Carina Audisio 193

- Isolation and characterization of *Rhodococcus* sp. Y22 and its potential application to tobacco processing**
X.-W. Gong, J.-K. Yang, Y.-Q. Duan, J.-Y. Dong, W. Zhe, L. Wang, Q.-H. Li, K.-Q. Zhang 200

- Identification of the glutamine synthetase adenylyltransferase of *Azospirillum brasilense***
A. Van Dommelen, S. Spaepen, J. Vanderleyden 205

Microbe environment interactions

- CsuA/BABCDE-dependent pili are not involved in the adherence of *Acinetobacter baumannii* ATCC19606^T to human airway epithelial cells and their inflammatory response**
A. de Breij, J. Gaddy, J. van der Meer, R. Koning, A. Koster, P. van den Broek, L. Actis, P. Nibbering, L. Dijkshoorn 213

- The homologue of the *Saccharomyces cerevisiae* RIM9 gene is required for ambient pH signalling in *Candida albicans***
M. Cornet, M.L. Richard, C. Gaillardin 219

- Biofilm formation of *Bdellovibrio bacteriovorus* host-independent derivatives**
A.A. Medina, D.E. Kadouri 224

Mobile elements

- The new IS1595 family, its relation to IS1 and the frontier between insertion sequences and transposons**
P. Siguier, L. Gagnevin, M. Chandler 232