

AMERICAN JOURNAL OF OPHTHALMOLOGY®

VOLUME 145

**HAVE YOU SEEN THE 10-YEAR LONG-TERM SAFETY DATA ON LASER
IN SITU KERATOMILEUSIS?**

Waring

GLAUCOMA SCREENING: THE VALUE IS IN THE DETAILS

Mills

ORIGINAL ARTICLES

**CHARACTERISTICS OF UNTREATED AIDS-RELATED CYTOMEGALOVIRUS RETINITIS. I. FINDINGS
BEFORE THE ERA OF HIGHLY ACTIVE ANTIRETROVIRAL THERAPY (1988 TO 1994)**

Holland, Vaudaux, Jeng, and Co-Authors

**CHARACTERISTICS OF UNTREATED AIDS-RELATED CYTOMEGALOVIRUS RETINITIS. II.
FINDINGS IN THE ERA OF HIGHLY ACTIVE ANTIRETROVIRAL THERAPY (1997 TO 2000)**

Holland, Vaudaux, Shiramizu, and Co-Authors

TEN-YEAR FOLLOW-UP OF LASER IN SITU KERATOMILEUSIS FOR HIGH MYOPIA

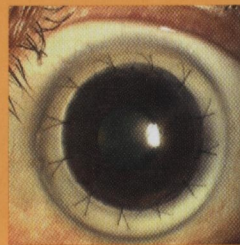
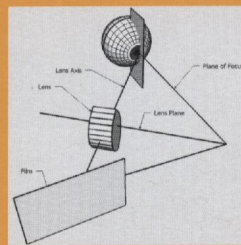
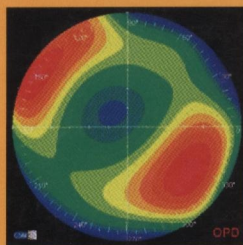
Alió, Muftuoglu, Ortiz, and Co-Authors

COST ANALYSIS OF GLAUCOMA MEDICATIONS

Rylander and Vold

**TOPICAL INTERFERON ALFA IN THE TREATMENT OF CONJUNCTIVAL MELANOMA AND
PRIMARY ACQUIRED MELANOSIS COMPLEX**

Finger, Sedek, and Chin



AJO®

MONTHLY SINCE 1884
Full-text online at AJO.com

ELSEVIER

ISSN 0002-9394

AMERICAN JOURNAL OF OPHTHALMOLOGY®

ISSN 0002-9394 • VOL. 145, NO. 2 FEBRUARY 2008

CONTENTS

EDITORIALS

• 189 Myopic regression after laser in situ keratomileusis: a medical alternative to surgical enhancement. *Jayne S. Weiss and Maryam Mokhtarzadeh*

• 191 The importance of rates in glaucoma. *Joseph Caprioli*

ORIGINAL ARTICLES

• 193 Bilateral *Acanthamoeba* keratitis. *Kirk R. Wilhelmus, Dan B. Jones, Alice Y. Matoba, M. Bowes Hamill, Stephen C. Pflugfelder, and Mitchell P. Weikert*
Among 50 patients in whom *Acanthamoeba* keratitis developed as a complication of contact lens wear, 11% had involvement of both eyes either simultaneously or sequentially. A renewed effort in preventing contact lens-related corneal infection is needed urgently.

• 198 Acyclovir therapy in prevention of recurrent herpetic keratitis following penetrating keratoplasty. *Sudipta Ghosh, Vishal Jhanji, Ecosse Lamoureux, Hugh R. Taylor, and Rasik B. Vajpayee*

A retrospective comparative evaluation of prophylactic systemic and topical acyclovir therapy for prevention of recurrence of herpetic keratitis following penetrating keratoplasty was performed. Recurrence of herpetic keratitis was seen in 12% in the systemic group compared to 55% in the topical group. Also, more eyes (52%) in the topical group had rejection episodes as compared to systemic group (19%). Overall graft survival rate was better in patients that received prophylactic systemic acyclovir therapy.

• 203 Iris reconstruction in penetrating keratoplasty—surgical techniques and a case-control study to evaluate effect on graft survival. *Anshu Arundhati, Brendon Zhou Hui Jun, Prathiba Janardhan, and Donald T. H. Tan*

Iris reconstruction is a relatively simple procedure that should be performed in eyes with significant iris/pupil abnormalities at the time of open sky penetrating keratoplasty (PKP). A case-control study has demonstrated that iris reconstruction at the time of PKP improved long-term graft survival (HR 2.52; 95% CI, 1.14 to 5.57; $P = .022$) and possibly visual outcome ($P = .40$).

• 210 Femtosecond laser shaped penetrating keratoplasty: one-year results utilizing a top-hat configuration. *Francis W. Price, Jr and Marianne O. Price*

An evaluation of using the IntraLase femtosecond laser to create shaped corneal grafts in penetrating keratoplasty to treat corneal disease. This study observes the effects of using the femtosecond laser to create contoured penetrating keratoplasty incisions, even in eyes with significant opacities, and assesses whether the increased surface contact area between the host and donor graft may benefit wound healing.

• 215 Comparison of dynamic contour tonometry and Goldmann applanation tonometry in deep lamellar and penetrating keratoplasties. *Piero Ceruti, Roberta Morbio, Michele Marraffa, and Giorgio Marchini*

This study on 32 eyes with deep lamellar and penetrating keratoplasties reveals a good overall correlation between intraocular pressure readings obtained by dynamic contour tonometry and Goldmann applanation tonometry, but the agreement between instruments differs in high or low intraocular pressure ranges. The measurements provided by

AJO®