

AMERICAN JOURNAL OF OPHTHALMOLOGY®

VOLUME 145

**HAVE YOU SEEN THE 10-YEAR LONG-TERM SAFETY DATA ON LASER
IN SITU KERATOMILEUSIS?**

Waring

GLAUCOMA SCREENING: THE VALUE IS IN THE DETAILS

Mills

ORIGINAL ARTICLES

**CHARACTERISTICS OF UNTREATED AIDS-RELATED CYTOMEGALOVIRUS RETINITIS. I. FINDINGS
BEFORE THE ERA OF HIGHLY ACTIVE ANTIRETROVIRAL THERAPY (1988 TO 1994)**

Holland, Vaudaux, Jeng, and Co-Authors

**CHARACTERISTICS OF UNTREATED AIDS-RELATED CYTOMEGALOVIRUS RETINITIS. II.
FINDINGS IN THE ERA OF HIGHLY ACTIVE ANTIRETROVIRAL THERAPY (1997 TO 2000)**

Holland, Vaudaux, Shiramizu, and Co-Authors

TEN-YEAR FOLLOW-UP OF LASER IN SITU KERATOMILEUSIS FOR HIGH MYOPIA

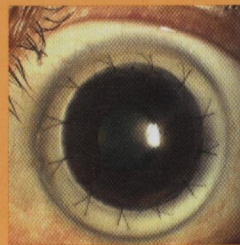
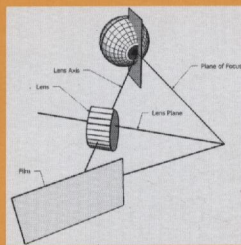
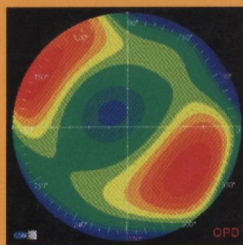
Alió, Muftuoglu, Ortiz, and Co-Authors

COST ANALYSIS OF GLAUCOMA MEDICATIONS

Rylander and Vold

**TOPICAL INTERFERON ALFA IN THE TREATMENT OF CONJUNCTIVAL MELANOMA AND
PRIMARY ACQUIRED MELANOSIS COMPLEX**

Finger, Sedek, and Chin



AJO®

MONTHLY SINCE 1884
Full-text online at AJO.com

ELSEVIER

ISSN 0002-9394

AMERICAN JOURNAL OF OPHTHALMOLOGY®

ISSN 0002-9394 • VOL. 145, NO. 5 MAY 2008

CONTENTS

EDITORIAL

- **769 Idiopathic no more: clues to the pathogenesis of Fuchs heterochromic iridocyclitis and glaucomatocyclitic crisis.** *Russell N. Van Gelder*

ORIGINAL ARTICLES

- **772 Outcomes of femtosecond laser-assisted penetrating keratoplasty.** *Yong M. Por, Jacob Y. Chuan Cheng, Anand Parthasarathy, Jodhbir S. Mehta, and Donald T. H. Tan*

Eight patients underwent penetrating keratoplasty with trephination of donor and recipient corneas by the Femtec laser. Trephinations were straight and perpendicular to the corneal surface. No complications attributable to the laser occurred. Postoperatively patients saw well with relatively low degrees of astigmatism. Anterior segment optical coherence tomography confirmed good graft-host apposition and alignment. These findings demonstrate the utility of the femtosecond laser for trephination and show that good results are obtained with conventional trephination profiles.

- **775 One-year results of intrastromal corneal ring segment implantation (KeraRing) using femtosecond laser in patients with keratoconus.** *Efekan Coskunseven, George D. Kymionis, Nikolaos S. Tsiklis, Serife Atun, Ebru Arslan, Mirko R. Jankov, and Ioannis G. Pallikaris*

In this study, intrastromal corneal ring segments (KeraRing) implantation using femtosecond laser for tunnel creation in keratoconic patients improved patient visual acuity [VA] (both uncorrected VA and best spectacle-corrected VA) without significant complications.

- **780 Intraocular pressure measurements following Descemet stripping endothelial keratoplasty.** *Thasarat S. Vajaranant, Marianne O. Price, Francis W. Price, Jacob T. Wilensky, and Deepak P. Edward*

This study investigated the effect of increased corneal thickness after Descemet stripping endothelial keratoplasty (DSEK) on intraocular pressure using three different techniques: Goldmann tonometry (GAT), pneumatonometry, and dynamic contour tonometry. In our cohort of 50 eyes, the falsely elevated GAT, as expected in thick corneas, was not demonstrated after DSEK.

- **787 Sutureless amniotic membrane transplantation for partial limbal stem cell deficiency.** *Ahmad Kheirkhah, Victoria Casas, Vadrevu K. Raju, and Scheffer C. G. Tseng*
- Amniotic membrane transplantation using fibrin glue appears to be a safe and effective method of restoring a stable corneal epithelium for cases with partial limbal stem cell deficiency. In eyes with very extensive involvement, stage-wise surgeries can restore the entire corneal surface. This approach avoids the need for transplanting limbal epithelial stem cells.

- **795 Correlations among upper and lower tear menisci, noninvasive tear break-up time, and the Schirmer test.** *Jianhua Wang, Jayachandra R. Palakuru, and James V. Aquavella*

The relationships among tear meniscus parameters, noninvasive tear break-up time (NITBUT), and the Schirmer test were determined in a group of health subjects. NITBUT appears correlated with the lower tear meniscus during normal blinking, and the Schirmer test appears not correlated with the noninvasively measured tear meniscus.

AJO®