

# AMERICAN JOURNAL OF OPHTHALMOLOGY®

VOLUME 145

**HAVE YOU SEEN THE 10-YEAR LONG-TERM SAFETY DATA ON LASER  
IN SITU KERATOMILEUSIS?**

Waring

**GLAUCOMA SCREENING: THE VALUE IS IN THE DETAILS**

Mills

## ORIGINAL ARTICLES

**CHARACTERISTICS OF UNTREATED AIDS-RELATED CYTOMEGALOVIRUS RETINITIS. I. FINDINGS  
BEFORE THE ERA OF HIGHLY ACTIVE ANTIRETROVIRAL THERAPY (1988 TO 1994)**

Holland, Vaudaux, Jeng, and Co-Authors

**CHARACTERISTICS OF UNTREATED AIDS-RELATED CYTOMEGALOVIRUS RETINITIS. II.  
FINDINGS IN THE ERA OF HIGHLY ACTIVE ANTIRETROVIRAL THERAPY (1997 TO 2000)**

Holland, Vaudaux, Shiramizu, and Co-Authors

**TEN-YEAR FOLLOW-UP OF LASER IN SITU KERATOMILEUSIS FOR HIGH MYOPIA**

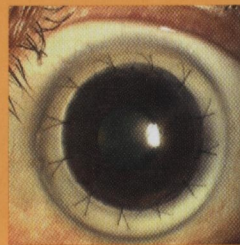
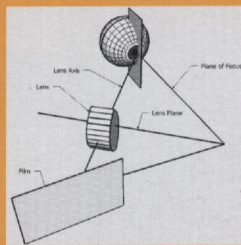
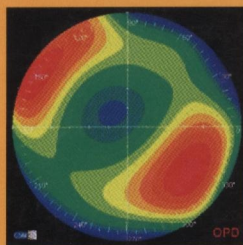
Alió, Muftuoglu, Ortiz, and Co-Authors

**COST ANALYSIS OF GLAUCOMA MEDICATIONS**

Rylander and Vold

**TOPICAL INTERFERON ALFA IN THE TREATMENT OF CONJUNCTIVAL MELANOMA AND  
PRIMARY ACQUIRED MELANOSIS COMPLEX**

Finger, Sedek, and Chin



---

# AJO®

MONTHLY SINCE 1884  
Full-text online at AJO.com

ELSEVIER

ISSN 0002-9394



# AMERICAN JOURNAL OF OPHTHALMOLOGY®

ISSN 0002-9394 • VOL. 145, NO. 6 JUNE 2008

## CONTENTS

### PERSPECTIVE

- **941 Ocular adnexal lymphoid tumors: progress in need of clarification.** *Frederick A. Jakobiec*

Ocular adnexal lymphoid tumors and lymphomas (OALs) should be evaluated in the context of studies by general hematopathologists. One landmark study of 353 patients provided a full gamut of histopathologic and immunophenotypic data and established that extranodal marginal zone lymphoma (EMZL) is the most common OAL and fortunately is endowed with a favorable prognosis. Mucosa-associated lymphoid tissue (MALT) lymphoma should be used only for EMZLs situated in the conjunctiva, lacrimal gland, or lacrimal sac.

### ORIGINAL ARTICLES

- **951 Ocular TRUST: nationwide antimicrobial susceptibility patterns in ocular isolates.** *Penny A. Asbell, Kathryn A. Colby, Sophie Deng, Peter McDonnell, David M. Meisler, Michael B. Raizman, John D. Sheppard Jr, and Daniel F. Sahm*

First-year results are presented for an annual nationwide antimicrobial susceptibility surveillance program in prospectively collected ocular isolates. In vitro susceptibilities of *Staphylococcus aureus*, *Streptococcus pneumoniae*, and *Haemophilus influenzae* were determined against a panel of nine antimicrobials (ciprofloxacin, gatifloxacin, levofloxacin, moxifloxacin, penicillin, azithromycin, tobramycin, trimethoprim, and polymyxin B). Results show virtually identical susceptibility patterns of *S. aureus* (methicillin resistant and methicillin susceptible), *S. pneumoniae*, and *H. influenzae* to gatifloxacin, levofloxacin, and moxifloxacin.

- **959 Clinical cure of bacterial conjunctivitis with azithromycin 1%: vehicle-controlled, double-masked clinical trial.** *Mark B. Abelson, Warren Heller, Aron M. Shapiro, Erwin Si, Peng Hsu, and Lyle M. Bowman, on behalf of The AzaSite Clinical Study Group*

Azithromycin is an azalide antibiotic. In a recent phase 3 vehicle-controlled clinical trial of participants with bacterial conjunctivitis, the data indicated that AzaSite (azithromycin 1% ocular solution) is a broad-spectrum antibiotic with an enhanced killing capacity for pathogens previously resistant to azithromycin, a safety profile that maintains many of the benefits of the class, and a dosing regimen that represents a major reduction compared with conventional drops in the number and frequency of drops needed.

- **966 Epidemiology of gram-negative conjunctivitis in neonatal intensive care unit patients.** *Connie J. Chen and Christopher E. Starr*

Low birth weight and low gestational age were significant risk factors for gram-negative conjunctivitis in the neonatal intensive care unit. Predominant gram-negative pathogens included *Klebsiella* species, *Escherichia coli*, *Serratia marcescens*, *Pseudomonas aeruginosa*, and *Enterobacter* species. Antibiotic resistance also was observed, in particular gentamicin-resistant *Klebsiella* species. These findings may be useful in risk-stratifying infants with clinical signs of conjunctivitis based on birth weight and gestational age and aid in the design of empiric treatment.

- **971 Use of chlorazol black E mounts of corneal scrapes for diagnosis of filamentous fungal keratitis.** *Philip Aloysius Thomas, Jayaraman Kaliamurthy, Christadoss Arul Nelson Jesudasan, and Pitchairaj Geraldine*

This study describes the use of chlorazol black E to detect fungal filaments in corneal scrapings, in comparison with

AJO®