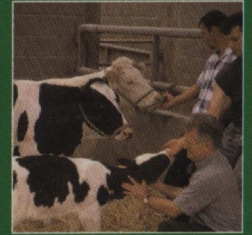


ISSN 1751-7311

VOLUME 2



# animal

AN INTERNATIONAL JOURNAL OF ANIMAL BIOSCIENCE



animal

CAMBRIDGE  
UNIVERSITY PRESS

## CONTENTS

### Nutrition

- Lavialle, F. and Chanat, E.*  
Lipid-deprived diet perturbs O-glycosylation of secretory proteins in rat mammary epithelial cells 491
- Røjen, B. A., Lund, P. and Kristensen, N. B.*  
Urea and short-chain fatty acids metabolism in Holstein cows fed a low-nitrogen grass-based diet 500
- Rooke, J. A., Dwyer, C. M. and Ashworth, C. J.*  
The potential for improving physiological, behavioural and immunological responses in the neonatal lamb by trace element and vitamin supplementation of the ewe 514
- Gallois, M., Le Huërou-Luron, I., Fortun-Lamothe, L., Lallès, J. P. and Gidenne, T.*  
Adaptability of the digestive function according to age at weaning in the rabbit: I. Effect on feed intake and digestive functionality 525
- Gallois, M., Fortun-Lamothe, L., Michelan, A. and Gidenne, T.*  
Adaptability of the digestive function according to age at weaning in the rabbit: II. Effect on nutrient digestion in the small intestine and in the whole digestive tract 536
- Physiology and functional biology of systems**
- Khan, M. I. R. and Ijaz, A.*  
Effects of osmotic pressure on motility, plasma membrane integrity and viability in fresh and frozen-thawed buffalo spermatozoa 548
- De Rensis, F., López-Gatiús, F., Capelli, T., Molina, E., Techakumphu, M. and Scaramuzzi, R. J.*  
Effect of season on luteal activity during the *post partum* period of dairy cows in temperate areas 554
- Valette, J.-P., Robert, C. and Denoix, J.-M.*  
Use of linear and non-linear functions to describe the growth of young sport- and race-horses born in Normandy 560
- Ollier, S., Chauvet, S., Martin, P., Chilliard, Y. and Leroux, C.*  
Goat's  $\alpha_{S1}$ -casein polymorphism affects gene expression profile of lactating mammary gland 566
- Tygesen, M. P., Tauson, A.-H., Blache, D., Husted, S. M. and Nielsen, M. O.*  
Late foetal life nutrient restriction and sire genotype affect postnatal performance of lambs 574
- Kędzierski, W. and Kapica, M.*  
Plasma concentration of leptin and ghrelin in Standardbred foals as related to the age, sex, exercise and training 582
- Nørgaard, J. V., Sørensen, M. T., Theil, P. K., Sehested, J. and Sejrsen, K.*  
Effect of pregnancy and feeding level on cell turnover and expression of related genes in the mammary tissue of lactating dairy cows 588
- Perez-Camps, M. and Garcia-Ximenez, F.*  
Osmolarity and composition of cell culture media affect further development and survival in zebrafish embryos 595
- Behaviour, welfare and health**
- Lewis, C. R. G. and McGlone, J. J.*  
Modelling feeding behaviour, rate of feed passage and daily feeding cycles, as possible causes of fatigued pigs 600
- Carcangiu, V., Vacca, G. M., Parmeggiani, A., Mura, M. C., Pazzola, M., Dettori, M. L. and Bini, P. P.*  
The effect of shearing procedures on blood levels of growth hormone, cortisol and other stress haematochemical parameters in Sarda sheep 606
- Mee, J. F., Berry, D. P. and Cromie, A. R.*  
Prevalence of, and risk factors associated with, perinatal calf mortality in pasture-based Holstein-Friesian cows 613
- Product quality, human health and well-being**
- Ventanas, S., Tejeda, J. F. and Estévez, M.*  
Chemical composition and oxidative status of tissues from Iberian pigs as affected by diets: extensive feeding v. oleic acid- and tocopherol-enriched mixed diets 621
- Madec, I., Pageat, P., Bougrat, L., Lecuelle-Lafont, C., Saffray, D., Falwee, C., Bollard, A., Chabrol, P. and Gabarrou, J.-F.*  
Influence of a preen gland secretion on growth and meat quality of heavy broilers 631
- Rioux, V., Catheline, D., Beauchamp, E., Le Bloc'h, J., Pédrone, F. and Legrand, P.*  
Substitution of dietary oleic acid for myristic acid increases the tissue storage of  $\alpha$ -linolenic acid and the concentration of docosahexaenoic acid in the brain, red blood cells and plasma in the rat 636
- Gruffat, D., Rémond, C., Durand, D., Loreau, O. and Bauchart, D.*  
9cis,11trans conjugated linoleic acid (CLA) is synthesised and desaturated into conjugated 18:3 in bovine adipose tissues 645

