

Chemistry & Industry

where science
meets business

Issue 7
1 April 2002
www.chemind.org

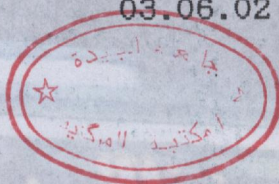
£18

London biotech booms

Ref: BT PF 160102/09
CHEMISTRY & INDUSTRY
01.04.02 Vol: 2002 No. 7
0009-3068 22304673
EDITIONS CHIHAB
ZI. LOT B5
B.P.744 REGHAIA
GG ALGER
ALGERIE

Df: 31146376

03.06.02



Cancer

UK government lags on pledge p6

Sunburn

Tanning pills are promised p7

Crystallography

3D X-ray microscope p9

http: www.chemind.org

Editor Simon Robinson

E-mail: editor@soci.org

News Marina Murphy, Richard Butler

E-mail: news@soci.org

Features Claire Curran

E-mail: features@soci.org

Art Editor Julia Cheftel

Production Laurence McJannet

Editorial Administrator Princess Johnson

E-mail: enquiries@soci.org

Advertising Dominic Young, David Roberts

E-mail: advertising@soci.org

Editorial & Advertising Offices

14/15 Belgrave Square,

London SW1X 8PS, UK

Tel: +44 (0)20 7598 1500

Fax: +44 (0)20 7235 9410

Advertising by Roscoe Services Limited

International Advisory Board

Sir James Black Kings College Hospital
Medical School London

Umberto Colombo ENEA, Rome

Roald Hoffmann Cornell University,
Ithaca, NY

Ralph Landau Listowel, NY

Lord Lewis University of Cambridge, UK

Yasunori Nishijima Kyoto University, Japan

Gerhard Wegner Max-Planck-Institut für
Polymerforschung, Mainz, Germany

Subscriptions Orders & Enquiries

Subscription enquiries can be sent by e-mail to
subscriptions@soci.org.

USA, Canada & Mexico subscription rate:

US\$560. Orders with payment to the Society of
Chemical Industry, Turpin Distribution, Blackhorse
Road, Letchworth, Herts SG6 1HN, UK. T: +44
(0)1462 672555; F: +44 (0)1462 480947. All
copies sent air speed to the USA.

USA POSTMASTER: send address changes to
Chemistry & Industry, 200 Meacham Avenue,
Elmont, NY 11003. Periodical postage paid at
Jamaica, NY 11431. Canadian GST Reg. No.
R127571347.

Japan subscription rate: £360. Orders with
payment to USACO, 17-12, Higashi-Azabu, 2-
chome, Minato-ku, Tokyo 106-0044.

Rest of world subscription rates: EU and ROW
£360. Orders with payment to Society of
Chemical Industry, Turpin Distribution (see
above). Delivery outside UK by air speed.

SCI Members' Enquiries

Queries and address changes to SCI
Member Services, 14/15 Belgrave Square,
London SW1X 8PS.

T: +44 (0)20 7598 1500; F: +44 (0)20
7823 1698; E-mail: members@soci.org;
Web address: www.soci.org.

Chemistry & Industry

© Society of Chemical Industry 2002.
ISSN 0009-3068. C&I is published twice a
month by the Society of Chemical Industry,
14/15 Belgrave Square, London SW1X
8PS. Printed by Friary Press, Bridport
Road, Dorchester, Dorset DT1 1JL.

Chemistry & Industry is editorially
independent of, but published by, Society
of Chemical Industry

Chemistry & Industry

Issue 7

Pages 1-36

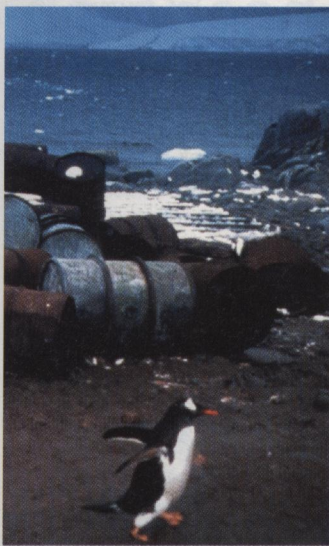
1 April 2002

Regulars

News	Biotech flounders in 2002	4
Diary	The latest shows, exhibitions and meetings	8
Data/analysis	Customer-value management	12
Comment	Solon hopes to reform forensic science	14
Patents	Non-embryonic stem cells and stroke treatment	15
Reviews	Sol-gel, crystallisation and drug delivery	22
Highlights	Analytical and organic chemistry	25
Afterwords	and crossword	34

Environment

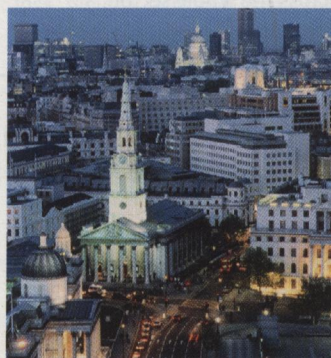
10 Emissions trading —
Marina Murphy reports
on who's for and against
in a world of global warming. And the
rapid collapse of a vast ice shelf in
Antarctica is seen as further evidence of
climate change.



Central Audiovisual Library, European Commission

London calling

16 Biotechnology start-ups
are booming across the
UK, and especially in
London, despite high rent and a
shortage of space. *Stuart Curry* reports
on the initiatives to support the growth
boom and questions whether a
recession is looming.



PhotoDisc



PhotoDisc

Biotechnology

20 *Claire Curran* reports on how to manage science spin-outs in London. A close up on universities and the London Bioscience Centre provide a flavour of what is yet to come.

Cover illustration: PhotoDisc

ABC SCI