

Chemistry & Industry

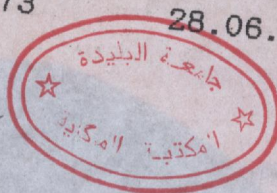
where science
meets business

Issue 12
17 June 2002
www.chemind.org

£18

Proteomics what's next?

Ref: BT PF 160102/09
CHEMISTRY & INDUSTRY
17.06.02 Vol: 2002 No. 12
0009-3068 22304673 Df: 31146376
EDITIONS CHIHAB
ZI. LOT B5
B.P.744 REGHAIA
GG ALGER
ALGERIE 28.06.02



Frictionless rotor

Organic breakthrough p31

India & Pakistan

We examine arsenals p9

Steak & kidney

Cows don't reject cloned kidneys p8

http: www.chemind.org

Editor Simon Robinson

E-mail: editor@soci.org

News Marina Murphy, Richard Butler

E-mail: news@soci.org

Features Claire Curran

E-mail: features@soci.org

Art Editor Julia Cheftel

Production Editor Laurence McJannet

Editorial Administrator Princess Johnson

E-mail: enquiries@soci.org

Advertising Dominic Young, David Roberts

E-mail: advertising@soci.org

Editorial & Advertising Offices

14/15 Belgrave Square,

London SW1X 8PS, UK

Tel: +44 (0)20 7598 1500

Fax: +44 (0)20 7235 9410

Advertising by Roscoe Services Limited

International Advisory Board

Sir James Black Kings College Hospital

Medical School London

Umberto Colombo ENEA, Rome

Ronald Hoffmann Cornell University,

Ithaca, NY

Ralph Landau Listowel, NY

Lord Lewis University of Cambridge, UK

Yasunori Nishijima Kyoto University, Japan

Gerhard Wegner Max-Planck-Institut für

Polymerforschung, Mainz, Germany

Subscriptions Orders & Enquiries

Subscription enquiries can be sent by e-mail to
subscriptions@soci.org.

USA, Canada & Mexico subscription rate:

US\$560. Orders with payment to the Society of

Chemical Industry, Turpin Distribution, Blackhorse

Road, Letchworth, Herts SG6 1HN, UK. T: +44

(0)1462 672555; F: +44 (0)1462 480947. All

copies sent air speed to the USA.

USA POSTMASTER: send address changes to

Chemistry & Industry, 200 Meacham Avenue,

Elmont, NY 11003. Periodical postage paid at

Jamaica, NY 11431. Canadian GST Reg. No.

R127571347.

Japan subscription rate: £360. Orders with

payment to USACO, 17-12, Higashi-Azabu, 2-

chome, Minato-ku, Tokyo 106-0044.

Rest of world subscription rates: EU and ROW

£360. Orders with payment to Society of

Chemical Industry, Turpin Distribution (see

above). Delivery outside UK by air speed.

SCI Members' Enquiries

Queries and address changes to SCI
Member Services, 14/15 Belgrave Square,
London SW1X 8PS.

T: +44 (0)20 7598 1500; F: +44 (0)20

7823 1698; E-mail: members@soci.org;

Web address: www.soci.org.

Chemistry & Industry

© Society of Chemical Industry 2002.

ISSN 0009-3068. C&I is published twice a

month by the Society of Chemical Industry,

14/15 Belgrave Square, London SW1X

8PS. Printed by Friary Press, Bridport

Road, Dorchester, Dorset DT1 1JL.

Chemistry & Industry is editorially
independent of, but published by, Society
of Chemical Industry

ABC SCI

Chemistry & Industry

Issue 12

Pages 1-44

17 June 2002

Regulars

News	Identical twins separated by PCR sequence	6
Diary	The latest shows, exhibitions and meetings	10
Data/analysis	How to create customer value in five steps	11
Patents	Restoring hair and growing garden furniture	12
Comment	Animal rights and wrongs	13
Reviews	The human genome and biocatalysis	28
Highlights	Organic, inorganic and organometallic	31
Afterwords	and crossword	42

The nuclear threat

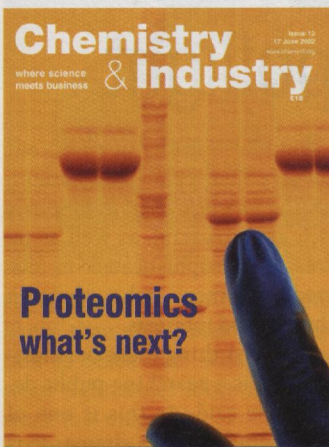
9 Pakistan and India have manage to build substantial nuclear arsenals, but not without help. *Richard Butler* reports on where the assistance came from.



Inpharmatica

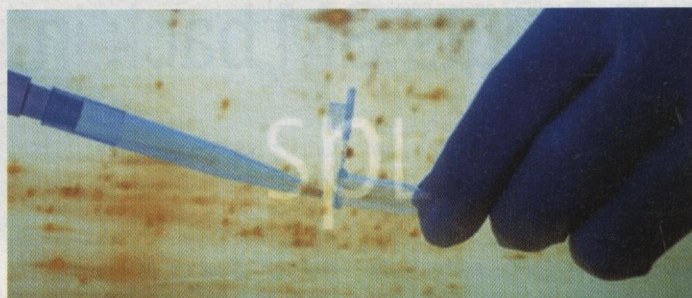
Proteomics

15 *Mark Swindells* from Inpharmatica looks at applying structural proteomics to identify pharmaceutically relevant targets. And, *Rachel Newton* explains how proteomics started, what it means and where it's going, particularly in the world of pharma.



Frictionless rotor | India & Pakistan | Steak & kidney

Cover illustration: electrophoresis,
J C Revy, Science Photo Library



Microarrays & drug discovery

24 Despite being unmatched in the market place, microarray technology has been mothballed. *Stuart Curry* reports on how it will benefit us in the future, if not here and now. The challenge of proteomics is pushing biotech companies to form alliances and find exciting opportunities for drug discovery. *Chris Sutton* from Shimadzu Biotech looks ahead.