

# Chemistry & Industry

where science  
meets business

Issue 3  
4 February 2002  
www.chemind.org

Ref: BT PF 160102/09  
CHEMISTRY & INDUSTRY  
04.02.02 Vol: 2002 No. 3  
0009-3068 22304673  
EDITIONS CHIHAB  
ZI. LOT B5  
B.P.744 REGHAIA  
GG ALGER  
ALGERIE

Df: 31146376

03.06.02



## Gene therapy

Rhodia

Tirouflet outlines 2002 plan p4

Lettuce

with integral *E coli* p6

CIA outlook

gloomy first half p6

http: www.chemind.org

**Editor** Simon Robinson  
E-mail: editor@soci.org  
**News** Marina Murphy, Richard Butler  
E-mail: news@soci.org  
**Features** Claire Curran  
E-mail: features@soci.org  
**Art Editor** Julia Cheffel  
**Production** Laurence McJannet  
**Editorial Administrator** Princess Johnson  
E-mail: enquiries@soci.org  
**Advertising** Dominic Young, David Roberts  
E-mail: advertising@soci.org

**Editorial & Advertising Offices**

14/15 Belgrave Square,  
London SW1X 8PS, UK  
Tel: +44 (0)20 7598 1500  
Fax: +44 (0)20 7235 9410  
Advertising by Roscoe Services Limited

**International Advisory Board**

**Sir James Black** Kings College Hospital  
Medical School London  
**Umberto Colombo** ENEA, Rome  
**Roald Hoffmann** Cornell  
University, Itaca, NY  
**Ralph Landau** Listowel, NY  
**Lord Lewis** University of Cambridge, UK  
**Yasunori Nishijima** Kyoto University, Japan  
**Gerhard Wegner** Max-Planck-Institut für  
Polymerforschung, Mainz, Germany

**Subscriptions Orders & Enquiries**

Subscription enquiries can be sent by e-mail to  
subscriptions@soci.org.  
USA, Canada & Mexico 2001 subscription rate:  
US\$560. Orders with payment to the Society of  
Chemical Industry, Turpin Distribution, Blackhorse  
Road, Letchworth, Herts SG6 1HN, UK. T: +44  
(0)1462 672555; F: +44 (0)1462 480947. All  
copies sent air speed to the USA.  
USA POSTMASTER: send address changes to  
Chemistry & Industry, 200 Meacham Avenue,  
Elmont, NY 11003. Periodical postage paid at  
Jamaica, NY 11431. Canadian GST Reg. No.  
R127571347.  
Japan 2001 subscription rate: £360. Orders with  
payment to USACO, 17-12, Higashi-Azabu, 2-  
chome, Minato-ku, Tokyo 106-0044.  
Rest of world 2001 subscription rates: EU and  
ROW £360. Orders with payment to Society of  
Chemical Industry, Turpin Distribution (see  
above). Delivery outside UK by air speed.

**SCI Members' Enquiries**

Queries and address changes to SCI  
Member Services, 14/15 Belgrave Square,  
London SW1X 8PS.  
T: +44 (0)20 7598 1500; F: +44 (0)20  
7823 1698; E-mail: members@soci.org;  
Web address: www.soci.org.

**Chemistry & Industry**

© Society of Chemical Industry 2001.  
ISSN 0009-3068. C&I is published twice a  
month by the Society of Chemical Industry,  
14/15 Belgrave Square, London SW1X  
8PS. Printed by Friary Press, Bridport  
Road, Dorchester, Dorset DT1 1JL.

Views expressed in **Chemistry & Industry**  
are those of individuals and not the SCI

# Chemistry & Industry

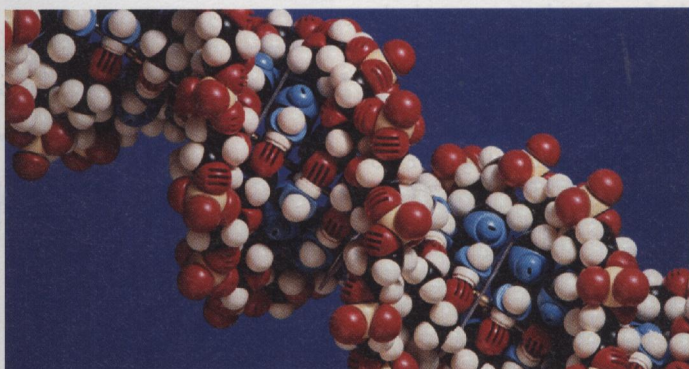
Number 4

Pages 1-30

4 February 2002

## Regulars

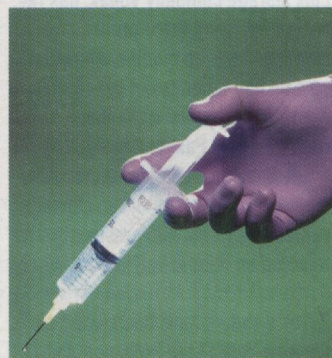
<b>News</b>	<b>UK chemicals strategy panel</b>	<b>5</b>
<b>Diary</b>	<b>Latest shows, exhibitions and meetings</b>	<b>11</b>
<b>Comment</b>	<b>CIA pragmatism verses idealism</b>	<b>12</b>
<b>Patents</b>	<b>Get a fatty acid fix and sleep tight</b>	<b>13</b>
<b>Reviews</b>	<b>Resins revisited to designer therapeutics</b>	<b>19</b>
<b>Highlights</b>	<b>Advanced materials and analytical chemistry</b>	<b>22</b>



PhotoDisc

### Gene therapy

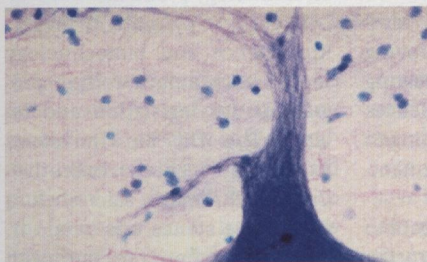
**9** Despite the promise that gene therapy holds, it has yet to yield its true potential. Marina Murphy reports.



Corbis

### Diabetes

**14** That millions of people may be living with this common condition undiagnosed emphasises the uncertainty surrounding diabetes. Jacqui Maguire uncovers the facts about the disorder.



Samira

### Gene transfer

**16** Gene transfer therapy has the potential to cure a range of diseases and conditions. Despite the difficulties of this new approach, innovation is offering promising therapeutic strategies. Sandra Afione and Robert Kotin of the US National Institute of Health explain.



Cover illustration: Corbis