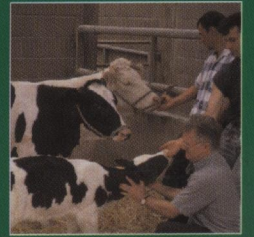
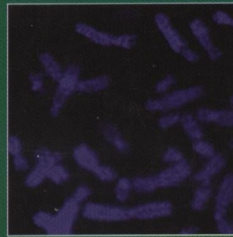


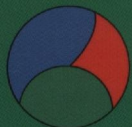
ISSN 1751-7311



animal

AN INTERNATIONAL JOURNAL OF ANIMAL BIOSCIENCE

CAMBRIDGE
UNIVERSITY PRESS



animal

CONTENTS

Editorial	1
Breeding and genetics	
<i>E. Karamichou, B. G. Merrell, W. A. Murray, G. Simm and S. C. Bishop</i>	
Selection for carcass quality in hill sheep measured by X-ray computer tomography	3
<i>R. A. Afolayan, W. S. Pitchford, M. P. B. Deland and W. A. McKiernan</i>	
Breed variation and genetic parameters for growth and body development in diverse beef cattle genotypes	13
<i>N. Gengler, P. Mayeres and M. Szydlowski</i>	
A simple method to approximate gene content in large pedigree populations: application to the myostatin gene in dual-purpose Belgian Blue cattle	21
<i>D. R. Mackey, A. W. Gordon, M. A. McCoy, M. Verner and C. S. Mayne</i>	
Associations between genetic merit for milk production and animal parameters and the fertility performance of dairy cows	29
Nutrition	
<i>A. L. F. Hellwing, A.-H. Tauson, N. P. Kjos and A. Skrede</i>	
Bacterial protein meal in diets for growing pigs: effects on protein and energy metabolism	45
<i>BSAS Annual Meeting, 2006. Session "Response to Nutrients"</i>	
<i>I. Kyriazakis</i>	
Foreword: Predicting the responses of animals to their nutrients -- quo vadimus?	55
<i>R. M. Gous</i>	
Predicting nutrient responses in poultry: future challenges	57
<i>F. B. Sandberg, G. C. Emmans and I. Kyriazakis</i>	
The effects of pathogen challenges on the performance of naïve and immune animals: the problem of prediction	67
<i>N. C. Friggens and J. R. Newbold</i>	
Towards a biological basis for predicting nutrient partitioning: the dairy cow as an example	87
<i>J. Dijkstra, E. Kebreab, J. A. N. Mills, W. F. Pellikaan, S. López, A. Bannink and J. France</i>	
Predicting the profile of nutrients available for absorption: from nutrient requirement to animal response and environmental impact	99
Physiology and functional biology of systems	
<i>P. Chartrin, M. D. Bernadet, G. Guy, J. Mouro, J.-F. Hocquette, N. Rideau, M.-J. Duclos and E. Baéza</i>	
Do age and feeding levels have comparable effects on fat deposition in breast muscle of mule ducks?	113
Behaviour, welfare and health	
<i>D. E. Gleeson, B. O'Brien, L. Boyle and B. Earley</i>	
Effect of milking frequency and nutritional level on aspects of the health and welfare of dairy cows	125
<i>C. Piñeiro, M. Piñeiro, J. Morales, R. Carpintero, F. M. Campbell, P. D. Eckersall, M. J. M. Toussaint, M. A. Alava and F. Lampreave</i>	
Pig acute-phase protein levels after stress induced by changes in the pattern of food administration	133
Farming systems and environment	
<i>P. Barcia, M. N. Bugalho, M. L. Campagnolo and J. O. Cerdeira</i>	
Using n-alkanes to estimate diet composition of herbivores: a novel mathematical approach	141
<i>R. M. Sawalha, J. Conington, S. Brotherstone and B. Villanueva</i>	
Analyses of lamb survival of Scottish Blackface sheep	151
Product quality, health and well-being	
<i>J.-F. Hocquette, S. Lehnert, W. Barendse, I. Cassar-Malek and B. Picard</i>	
Recent advances in cattle functional genomics and their application to beef quality	159

