



VOLUME 34

NUMBER 12 / NUMÉRO 12

DECEMBER / DÉCEMBRE

2007

An NRC Research Press
JOURNAL
Une **REVUE** des
Presses scientifiques du CNRC

Canadian Journal of
CIVIL ENGINEERING

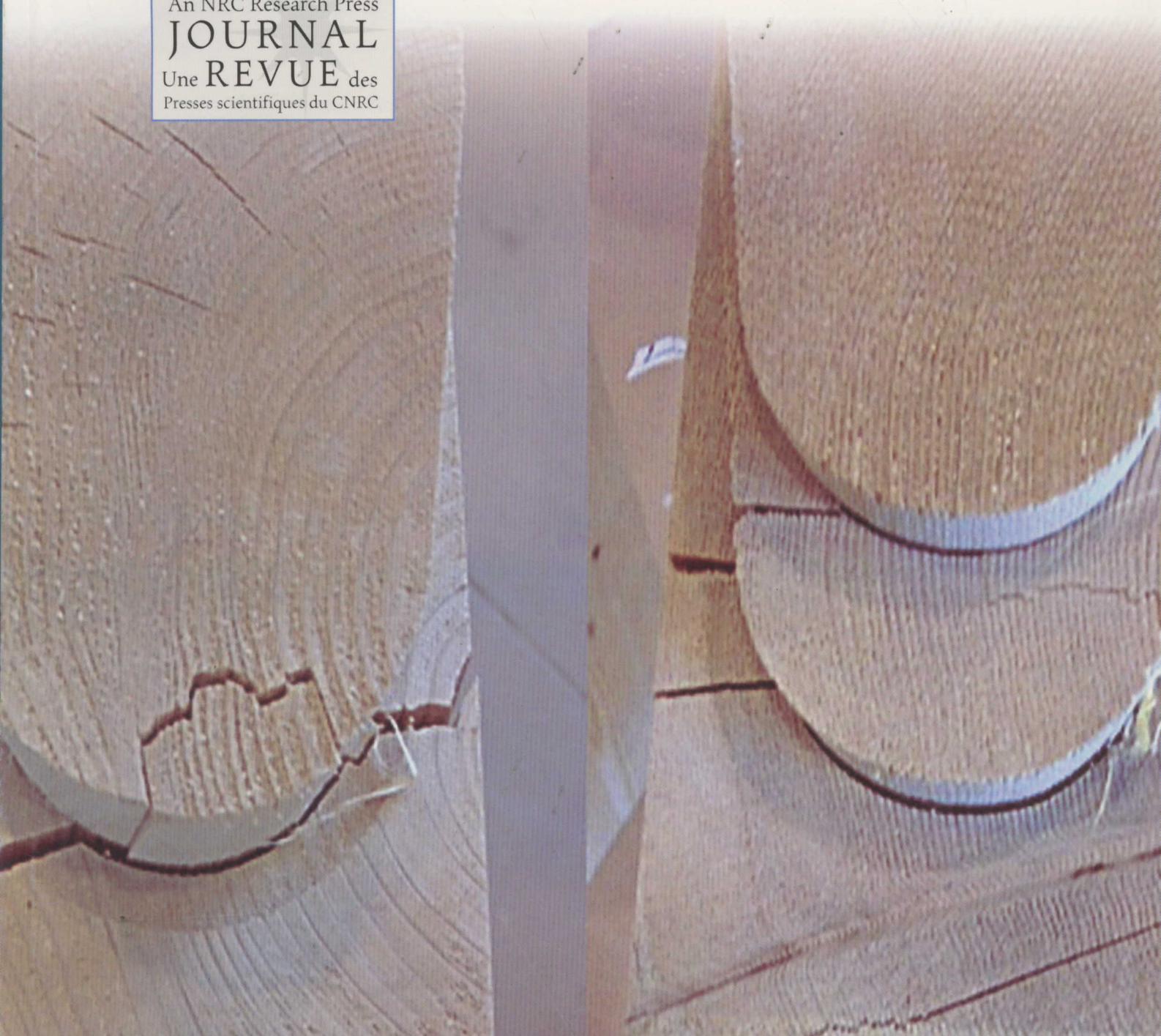


cjce.nrc.ca

Revue canadienne de

GÉNIE CIVIL

rcgc.cnrc.ca



National Research
Council Canada

Conseil national
de recherches Canada

NRC-CNRC

Contents (concluded) / Table des matières (suite et fin)

Transportation engineering

Ingénierie des transports

ARTICLE

ARTICLE

**Shy Bassan, Abishai Polus, 1577-1586
and Ardeshir Faghri**

Modeling of freeway breakdown process with log-periodic oscillations



National Research
Council Canada
Ottawa, Canada
K1A 0R6

Conseil national
de recherches Canada
Ottawa, Canada
K1A 0R6

Postage paid at Ottawa
Publications mail
Registration No. 40062591

Port payé à Ottawa
Poste-publication
Enregistrement n° 40062591

USPS periodical postage paid at Plattsburgh, NY 12901, USA

Canadian Journal of

CIVIL ENGINEERING

Volume 34, Number 12, December 2007

Revue canadienne de

GÉNIE CIVIL

Volume 34, numéro 12, décembre 2007

Construction engineering

ARTICLE

Hesham Osman and Tamer El-Diraby 1529–1541

Engineering mechanics

ARTICLE

Zhanping You and Qingli Dai 1519–1528

Hydrotechnical engineering

ARTICLE

Ram Balachandar, B.-S. Hyun,
and V.C. Patel 1587–1599

Structural engineering

ARTICLES

Angus C.C. Lam, J.J. Roger Cheng,
Michael C.H. Yam,
and Gaylene D. Kennedy 1542–1553

N. Smaoui, B. Bissonnette, M.A. Bérubé,
and B. Fournier 1554–1566

Mohamed A.H. Khedr 1567–1576

Thomas Tannert, Helmut Prion,
and Frank Lam 1600–1605

H.P. Hong and P. Hong 1606–1615

Ingénierie de la construction

ARTICLE

Implementation of subsurface utility engineering in Ontario: cases and a cost model

Mécanique appliquée

ARTICLE

Dynamic complex modulus predictions of hot-mix asphalt using a micromechanical-based finite element model

Hydraulique

ARTICLE

Effect of depth on flow over a fixed dune

Ingénierie des structures

ARTICLES

Repair of steel structures by bonded carbon fibre reinforced polymer patching: experimental and numerical study of carbon fibre reinforced polymer – steel double-lap joints under tensile loading

Stresses induced by alkali–silica reactivity in prototypes of reinforced concrete columns incorporating various types of reactive aggregates

Optimum design of steel telecommunication poles using genetic algorithms

Structural performance of rounded dovetail connections under different loading conditions

Assessment of ductility demand and reliability of bilinear single-degree-of-freedom systems under earthquake loading

Continued on inside back cover / Suite au verso

Front cover: Difference in failure after shear tests of rounded dovetail connection (RDC) and double-rounded dovetail connection (DRDC) (see Tannert et al., in this issue, pp. 1600–1605).

Page couverture : Différence dans les ruptures observées à la suite d'essais de cisaillement sur des assemblages à queue d'aronde simples (« RDC ») et doubles (« DRDC ») (voir Tannert et coll., ce numéro, p. 1600–1605).

