

VOLUME 36

NUMBER 9 / NUMÉRO 9

SEPTEMBER / SEPTEMBRE

2009

An NRC Research Press

**JOURNAL**

Une REVUE des  
Presses scientifiques du CNRC

# CIVIL ENGINEERING

Canadian Journal of

[cjce.nrc.ca](http://cjce.nrc.ca)

Including papers submitted to the

**JOURNAL OF ENVIRONMENTAL ENGINEERING AND SCIENCE**

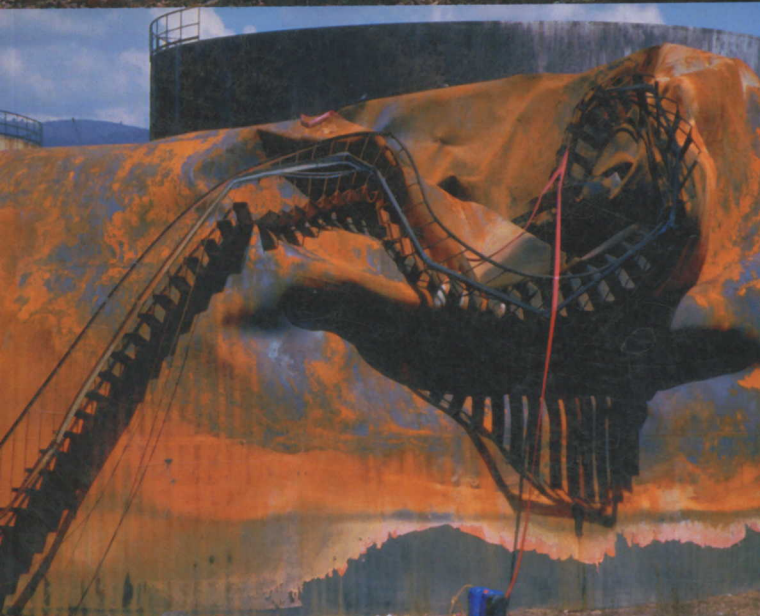
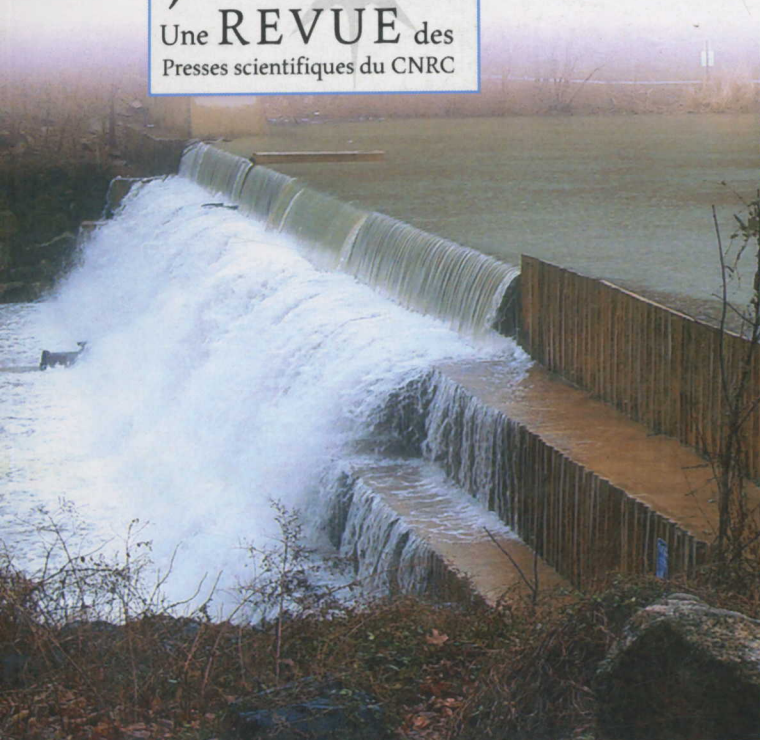
Revue canadienne de

# GÉNIE CIVIL

[rcgc.cnrc.ca](http://rcgc.cnrc.ca)

Y compris les articles envoyés à

**LA REVUE DU GÉNIE ET DE LA SCIENCE DE L'ENVIRONNEMENT**



National Research  
Council Canada

Conseil national  
de recherches Canada

**NRC-CNRC**

### Hydrotechnical engineering

#### ARTICLES

- Loubna Benyahya, Daniel Caissie,  
Fahim Ashkar, Nassir El-Jabi, and  
Mysore Satish 1421-1434
- Seema Chauhan and R.K. Shrivastava 1491-1505
- Shu-Qing Yang 1506-1516

#### TECHNICAL NOTES

- J. Qu, A.S. Ramamurthy,  
R. Tadayon, and Z. Chen 1530-1534
- Mustafa Göğüs, A. Cüneyt Gerek, and  
A. Burcu Altan-Sakarya 1539-1543

#### BOOK REVIEW

- A.M. Ferreira da Silva 1544-1545

### Structural engineering

#### ARTICLE

- Amit Pashan and M.U. Hosain 1435-1443

### Transportation engineering

#### ARTICLES

- Dalia Said, Yasser Hassan, and  
A.O. Abd El Halim 1391-1402
- Feng Hong and Dar-Hao Chen 1411-1420
- Aravind Krishna Swamy and  
Animesh Das 1470-1477

### Papers submitted to the Journal of Environmental Engineering and Science

#### ARTICLES

- YanJun Chang, Gopal Achari, and  
Cooper H. Langford 1547-1557

### Hydraulique

#### ARTICLES

- Comparison of the annual minimum flow and the deficit  
below threshold approaches: case study for the province of  
New Brunswick, Canada
- Reference evapotranspiration forecasting using different  
artificial neural networks algorithms
- Mechanism for initiating secondary currents in channel  
flows

#### NOTES TECHNIQUE

- Numerical simulation of sharp-crested weir flows
- Application of a flow-measurement structure for  
sediment-laden streams

#### CRITIQUE DE LIVRE

- Book Review: Advanced Fluid Mechanics  
by W.P. Graebel

### Ingénierie des structures

#### ARTICLE

- New design equations for channel shear connectors in  
composite beams

### Ingénierie des transports

#### ARTICLES

- Comfort thresholds for horizontal curve design
- Effects of surface preparation, thickness, and material on  
asphalt pavement overlay transverse crack propagation
- Optimal proportioning for hot recycled mix design under  
Superpave mix design consideration

### Articles soumis à la Revue du génie et de la science de l'environnement

#### ARTICLES

- Protocols for the analysis of transformer oil and its  
degradation in soil by hydrogen peroxide



National Research  
Council Canada  
Ottawa, Canada  
K1A 0R6

Conseil national  
de recherches Canada  
Ottawa, Canada  
K1A 0R6

Postage paid at Ottawa  
Publications mail  
Registration No. 40062591

Port payé à Ottawa  
Poste-publication  
Enregistrement n° 40062591

USPS periodical postage paid at Plattsburgh, NY 12901, USA

Canadian Journal of

# CIVIL ENGINEERING

Volume 36, Number 9, September 2009

Revue canadienne de

# GÉNIE CIVIL

Volume 36, numéro 9, septembre 2009

## Construction engineering

ARTICLES

**Keon Soon Im, Seung Heon Han,  
Bonsang Koo, and Do Young Jung** 1444-1458

**Ahmed A. Shaheen,  
Aminah Robinson Fayek, and  
Simaan M. AbouRizk** 1478-1490

**Ping Wang and Simaan M. AbouRizk** 1517-1529

## Engineering materials

ARTICLES

**Curtis Berthelot,  
Diana Podborochynski,  
Colin Wandzura, Colin Prang, and  
Brent Marjerison** 1403-1410

**J. Shen, I. Yurtdas, C. Diagana, and  
A. Li** 1459-1469

## Engineering mechanics

TECHNICAL NOTES

**Haifeng Liu, Baisheng Wu, and  
Zhengguang Li** 1535-1538

## Ingénierie de la construction

ARTICLES

Formulation of a pull production system for optimal inventory control of temporary rebar assembly plants

Methodology for integrating fuzzy expert systems and discrete event simulation in construction engineering

Large-scale simulation modeling system for industrial construction

## Matériaux d'ingénierie

ARTICLES

Triaxial frequency sweep characterization of Saskatchewan hot mix asphaltic concrete across asphalt cement binder type

Mix-design method of self-compacting concretes for pre-cast industry

## Mécanique appliqué

NOTES TECHNIQUE

Simple iteration method for structural static reanalysis

**Front cover: top left**, stepped spillway in operation at Wilde Lake in Columbia, Maryland, on 23 March 2005 after a 1-year storm event (photo courtesy of Christopher Goodell; see Chanson in the August 2007 issue, pp. 946-951); **top right**, aerial photo (taken July 1999) of the Annacis Island Wastewater Treatment Plant showing the completed secondary treatment facilities designed to treat wastewater from about one million people, with an average dry weather flow of 480 million litres per day (photo courtesy of Colin Jewall, when under assignment to the Greater Vancouver Regional District); **bottom left**, oil tank damaged due to fire during the Kocaeli, Turkey, earthquake, 17 August 1999 (photo courtesy of Dr. Kenneth Elwood, The University of British Columbia); **bottom right**, diagonally divided concrete cubes placed as an erosion protection at diversion tunnel No. 1 of the Seymareh Dam in Iran (see Emami and Schleiss in the January 2006 issue, pp. 81-92).

**Page couverture :** *gauche supérieure*, passage de la crue dans l'évacuateur de crues en marches d'escalier au Wilde Lake, à Columbia (Maryland), le 23 mars 2005 après un événement pluvio-hydrologique de 1 an (photo courtoisie de Christopher Goodell; voir Chanson, numéro d'août 2007, p. 946-951); *droite supérieure*, photo aérienne (juillet 1999) de la station d'épuration des eaux usées de l'île Annacis qui montre les installations d'épuration secondaire conçues pour traiter les eaux usées d'environ un million de personnes, avec un débit moyen par temps sec de 480 millions de litres par jour (photo courtoisie de Colin Jewall, lors de son affectation au district régional du Grand Vancouver); *gauche inférieure*, réservoir d'huile endommagé par le feu durant le séisme de Kocaeli en Turquie, le 17 août 1999 (photo courtoisie de Kenneth Elwood, The University of British Columbia); *droite inférieure*, cubes de béton séparés en diagonale et utilisés comme mesure de protection contre l'érosion à la sortie de la galerie de dérivation n° 1 du barrage de Seymareh en Iran (voir Emami and Schleiss, numéro de juin 2006, p. 81-92).

