

143	An Investigation on the Importance of Train-Bridge Interaction at Resonance P. Museros and E. Alarcón	335
144	Modelling Vertical Response of Railway Freight Wagons due to Track Irregularities D.W. O'Dwyer, D.P. Hegarty and B. Basu	337
145	Dynamic Train-Track-Bridge Interaction on Example of the Boyne Viaduct M. Majka, M. Hartnett, C. Bowe and D. O'Dwyer	339
146	Dynamic Response of Double-Track Railway Bridges M.K. Swailem	341
147	Critical Loading Events for the Assessment of Medium Span Bridges C.C. Caprani, S.A. Grave, E.J. O'Brien and A.J. O'Connor	343
XXVI Optimization		345
148	Evolutionary Structural Optimisation with Fatigue Life Constraints M. Haiba, D.C. Barton, P.C. Brooks and M.C. Levesley	347
149	Fully Stressed Structure Design Using Ranked BESO C.-H. Ryu, Y.-S. Lee and C.-M. Myung	349
150	Multi-Objective Topology Optimization of Structures J.F. Aguilar Madeira	351
Author Index		353
Keyword Index		357

Proceedings of The Sixth International Conference on Computational Structures Technology

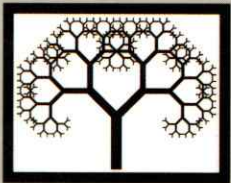
Edited by **B.H.V. Topping** and **Z. Bittnar**

This book contains the extended abstracts of the contributed papers presented at the Sixth International Conference on Computational Structures Technology, organised in conjunction with and held at the Faculty of Civil Engineering, Czech Technical University in Prague, Czech Republic, 4-6 September 2002.

The full length papers are available in electronic format on the accompanying CD-ROM. The topics covered have been classified as:

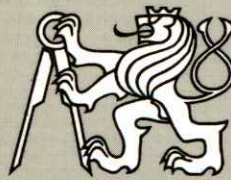
- Database Technology
- Nanomechanics
- Structural Analysis
- Finite Element Methods in Design
- Finite Element Theory
- Non-Linear Finite Element Analysis
- Dynamic and Vibration Analysis
- Dynamic Analysis for Design
- Optimization
- Seismic and Earthquake Engineering
- Damage Assessment
- Crack Modelling
- Materials Modelling
- Fatigue Modelling
- Contact
- Plates and Shells
- Non-Homogeneous Shells and Membranes
- Tension Structures
- Steel Structures
- Virtual Experiments with Steel
- Concrete Modelling
- Reinforced Concrete Structures
- Timber Structures
- Composites
- Design and Analysis of Bridges

A keyword and author index is provided both in this book and on the CD-ROM.



Civil-Comp Press

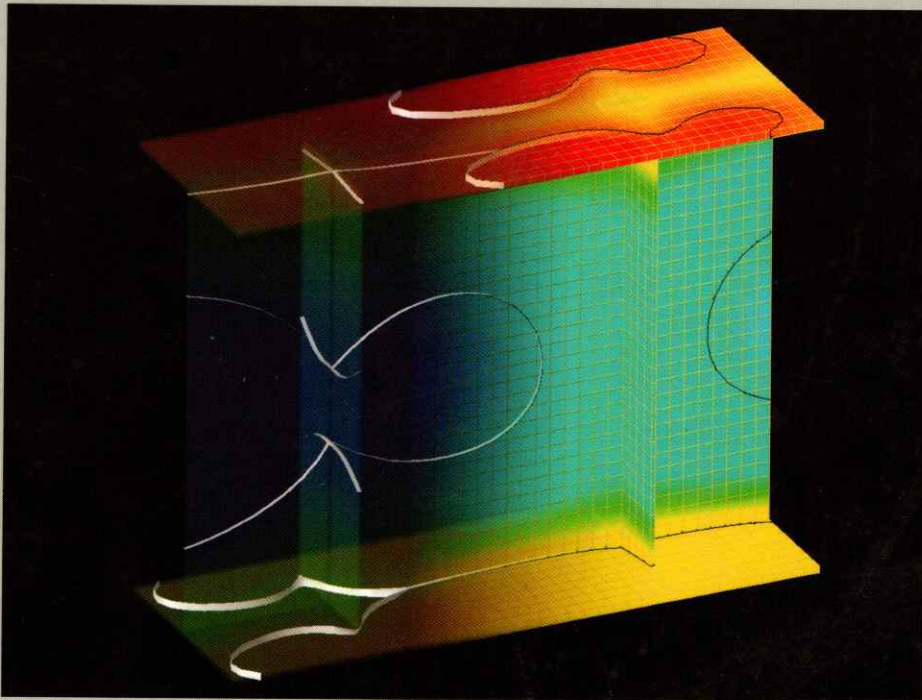
ISBN 0-948749-81-4 CD-ROM
ISBN 0-948749-82-2 Book
ISBN 0-948749-83-0 Combined Set



CTU Prague

**Proceedings of
The Sixth International Conference on
Computational Structures Technology**

**Edited by
B.H.V. Topping and Z. Bittnar**



**Prague - Czech Republic
4-6 September 2002**

CIVIL-COMP PRESS

Contents

<i>Preface</i>		xiii
I	Computational Database Technology	1
1	Computational Database Technology for Component Mode Synthesis M. Nyström and K. Orsborn	3
II	Nanomechanics	5
2	Atomistic Model for Static Equilibrium Problems Y.W. Kwon and S. Jung	7
III	Structural Analysis	9
3	Area Integral of a Stress Function over a Beam Cross-Section R. Vondráček and Z. Bittnar	11
4	Development of Matrix Method Based Structural Analysis Toolbox in Matlab Y. Arfiadi and M.N.S. Hadi	13
5	Sway Analysis of Spliced Pallet-Rack Structures R.G. Beale and M.H.R. Godley	15
6	Analysis of Orthogonal Grillage Systems using Transfer Matrix Methods E.S. Kameshki	17
7	Duality between Statical and Kinematical Engineering Systems O. Shai	19
8	Derivation of Methods and Knowledge in Structures by Combinatorial Representations N. Ta'aseh and O. Shai	21
9	Least Square Functionals for a Plate on an Elastic Foundation L.G. Selna and J.M. Sun	23
IV	Finite Element Methods in Design	25
10	An Optimal Plastic Shakedown Design F. Giambanco, L. Palizzolo and A. Caffarelli	27

11	Simulation of Beam-Column Stability with Automatic Strain Incrementation J. Szalai and F. Papp	29	V1	Non-Linear Finite Element Analysis	59
12	Predicting the Characteristic Curve of a Spacer Grid Spring by Finite Element Analysis S.P. Heo, K.H. Yoon and K.N. Song	31	25	Effect of Geometry Change on the Creep Failure Life of Internally Pressurized Pipes T.H. Hyde, W. Sun and A.A. Becker	61
13	Investigation of Effective Flange Width Formulas for T-Beams M. Utku and A. Aygar	33	26	Analytical Method for Elastoplastic Buckling Behaviour of H-Section Tube Elements Involving Local Buckling T. Ohtsuka and S. Motoyui	63
14	Subgrade Fatigue Life in the Cone of Disturbance after an Underground Explosion J.W. Bull and C.H. Woodford	35	27	Inelastic Behaviour of I-Shaped Aluminium Beams G. De Matteis, R. Landolfo, M. Manganiello and F.M. Mazzolani	65
V	Finite Element Techniques: Theory and Practice	37	28	External Stiffness Approach for Thin-Walled Frames with Elastic-Plasticity G. Turkalj, J. Brnic and J. Prpic-Orsic	67
15	Error Estimation and <i>p</i> -Adaptivity Based on the Partition of Unity Method T. Pannachet, P. Diez and H. Askes	39	29	Non-Linear Finite Element Analyses of Sheathed Timber Diaphragms L. Wu, U.A. Girhammar, B. Källsner and A. Moström	69
16	Rotational Invariants in Finite Element Formulation of Three-Dimensional Beam Theories D. Zupan and M. Saje	41	30	An Iterative Method for a Class of Nonlinear Large Scale (Near) Constrained Problems M.H.B.M. Shariff	71
17	Local Gradient and Stress Recovery for Triangular Elements in Plane Elasticity R.C.C. Silva, A.F. Loula and J.N.C. Guerreiro	43	VII	Dynamic and Vibration Analysis	73
18	A Rectangular Finite Element for Plane Elasticity with In-Plane Rotation A.I. Mousa and S.M. Tayeh	45	31	Symmetry in Dynamic Systems A. Kaveh and M.A. Sayarinejad	75
19	The Finite Element Approximation for Minimal Surfaces Subject to the Plateau Problems H. Gu	47	32	Dynamic Stiffness Formulation and Free Vibration Analysis of Spinning Beams J.R. Banerjee and H. Su	77
20	Fitting Strains and Displacements by Minimizing Dislocation Energy C.A. Felippa and K.C. Park	49	33	Convergence and Causality of the Implicit Fourier Transform S.J. Rodrigues Júnior and F. Venâncio-Filho	79
21	Shear Lag Analysis Using Latin Hypercube Sampling J. Žák and A. Florian	51	34	Solution of Transient Nonlinear Structural Dynamics Problems using the Modified Iterative Group-Implicit Algorithm Y. Dere and E.D. Sotelino	81
22	Representing Traction Free Boundaries using Drilling Degrees of Freedom A.A. Groenwold, Q.Z. Xiao and N.J. Theron	53	VIII	Dynamic Analysis for Design	83
23	Effects of Kinematic Inconsistency in Interface Elements A.L.G.A. Coutinho, M.A.D. Martins and R.M. Sýdenstricker	55	35	Dynamic Effects of High Speed Trains On Underpasses A. Frailie, L. Hermanns, F. Chirino and E. Alarcón	85
24	Displacement Finite Element Method for Couple Stress Theory E. Providas	57	36	Triply Coupled Vibrations of Thin-Walled Open Cross-Section Beams including Shear Effect A. Arpacı, E. Bozdag and E. Sunbuloglu	87
			37	The Coupling Effect in Biodynamic Models G. Birlik and Ö. Sezgin	89

XIII	Materials Modelling	151	XVI	Plates and Shells	183
64	Modelling of Nonlinear Behaviour of Masonry Structures: Phenomenological Approach J.B. Colliat, L. Davenne and A. Ibrahimbegović	153	77	Nonlinear Behaviour of the RFNS Element - Large Displacements and Rotations D. Brinascu	185
65	Analysis of Non-Linear Soft Thin Interfaces F. Lebon, R. Rizzoni, S. Ronel-Idrissi and C. Licht	155	78	Initial Flexural Failure Prediction of Fibre-Reinforced Laminated Sector Mindlin Plates M. Salehi and A.R. Sobhani	187
66	A Finite Element Formulation for No-Tension Materials in Finite Deformations M. Cuomo and M. Fagone	157	79	A Triangular Finite Element for the Study of the Post-Critical Behaviour of Shells L. Corradi and N. Panzeri	189
67	Rupture Simulation of Three Dimensional Elastoplastic Structures under Dynamic Loading G. Leclère, A. Nême and J.Y. Cognard	159	80	Non-Linear Vibrations of Anisotropic Cylindrical Shells M.H. Younani and A.A. Lakis	191
68	A Numerical Method for the Solution of the Bi-Dimensional Continuous with No-Tension Material S. Briccoli Bati and T. Rotunno	161	XVII	Computational Models for Non-Homogeneous Shells and Membranes	193
69	Hyper-Elastic Constitutive Equations of Conjugate Stresses and Strain Tensors for the Seth-Hill Strain Measures K. Farahani and H. Bahai	163	81	Modelling of Piezoelectric Adaptive Beam, Plate and Shell Structures: Some Developments and Results A. Bengaddou	195
70	Adaptive Analysis of Quasibrittle Failure B. Patzák and M. Jirásek	165	82	A C ¹ Triangular Finite Element for Analyzing Multilayered Shell Structures F. Dan, O. Polit and M. Touratier	197
71	Modelling of Time-Dependent Behaviour of Polycrystalline Rocks M. Mühlbauer, J. Krüis and Z. Bitnar	167	83	Prediction of the Two-Scale Buckling Response of Sandwich Beams under In-Plane Compression L. Leclercq, S. Drapier and A. Vautrin	199
XIV	Fatigue Modelling	169	84	Numerical Solution by Energy Minimization of Hyperelastic Membrane in Large Displacements and Finite Strains R. Bouzidi and A. Le Van	201
72	Computational Model for Analysis of Bending Fatigue in Gears J. Kramberger, M. Šraml, S. Glodež, J. Flašker and I. Potrč	171	85	Linear and Quadratic Potential Variation in a New Piezoelectric Eight Node Finite Element O. Polit and I. Bruint	203
73	The Application of Fatigue Models to Railway Bridges R. Gallagher, D.W. O'Dwyer and M. Hartnett	173	86	A Comparative Study for the Mechanical Behaviour of the Materials having Different Moduli in Tension and Compression S.K. Afag, M. Karama and S. Mistou	205
XV	Contact	175	87	Beam and Plain Strain Finite Elements for Inflatable Fabric Membranes in Two Dimensions J.-C. Thomas, Y. Ravaut, C. Wielgosz, R. Bouzidi	207
74	Contact Formulation for Solid-Shell Elements undergoing Large Deformations M. Hannau and K. Schweizerhof	177	88	Simulation of Thermoplastic Composite Forming using Shells with Pinching Elements A. Chernet, D. Soulat, P. Boisse, M. Touratier, E. Soccard S. Maisson-Le Poec and S. Guinard	209
75	Relaxation and Block-Relaxation Procedures for the Dual Formulation of the Signorini-Coulomb Frictional Contact P. Bisegna, F. Lebon and F. Maceri	179			
76	Finite Element Method Contact Simulations of CMC Brake Disk Systems for High Speed Rail Vehicles R. Doroiti, O. Manni and L. Barone	181			

89	Dynamic Characteristics of Laminated Angle-Ply Noncircular Cylindrical Shells H.G. Patel, B.P. Patel, M. Ganapathi and M. Touratier	211	102	Virtual Experiments of FSW-Fabricated Aluminium Structural Elements E.G. Vigh	243
90	A Unified Formulation for Multilayered Plate Elements based on PVD and RMVT E. Carrera	213	103	Finite Element Modelling and Analysis of Bolted Joints of Three Dimensional Tubular Structures E.G. Vigh and L. Dunai	245
XVIII	Tension Structures	215	104	Numerical Studies on the Ultimate Behaviour of Steel Cold-formed Profiles A. Joo and L. Dunai	247
91	Optimal Design of Tensile Fabric Structures T. Nouri-Baranger and P. Trompette	217	105	Finite Element Simulation of the Cyclic Behaviour of End-Plate Joints B. Adány and L. Dunai	249
92	NURBS representation of Coated Woven Fabric Behaviour B.N. Bridgins and P.D. Gosling	219	XVI	Concrete Analysis and Modelling	251
93	A Holistic Design Procedure for Membrane Structures using the SCOOP Framework K. Reinmann, R. Wagner, R. Blum and M. Jentsch	221	106	Gaussian Segmentation of BSE Images to Assess the Porosity of Concrete D.J. Robinson, F. Murtagh and P.A.M. Basheer	253
XIX	Steel Structures: Analysis and Design	223	107	Elastic Degradation and Damage in Concrete following Nonlinear Equations and Loading Function M.H.F.M. Barros, C.M. Mota Soares and R.A.F. Martins	255
94	Ultimate Load Carrying Capacity of Long-Span Steel Arch Bridges J. Cheng, J.-J. Jiang, R.-C. Xiao and H.-F. Xiang	225	108	Non-Linear Coupled Heat and Moisture Analysis of Concrete M. Kulhavy ² and Z. Bitnar	257
95	Simulation Based Design Methodology of Steel Structure Members F. Papp	227	109	Verification of Microplane Model by Means of Various Numerical Simulations J. Němeček, M. Ventulka and Z. Bitnar	259
96	A Parametric Study of Steel and Composite Semi-Rigid Portal Frames O. Brito Jr, S.A.L. de Andrade, P.C.G. da S. Vellasco, J.G.S. da Silva and L.R.O. de Lima	229	XVII	Reinforced Concrete Structures: Analysis and Design	261
97	Application of an Advanced Evolutionary Strategy for the Automatic Design of Modular Steel Structures C. Ebenau, J. Rottschaefer and G. Thierauf	231	110	Time-dependent and Materially Non-linear Analysis of Concrete Structures J. Pencik	263
98	On the Distortional Post-Buckling Behaviour of Rack-Section Cold-Formed Steel Columns L.C. Prola and D. Camotim	233	111	Energy Dissipating Capacity of Reinforced Concrete Members F.G. Bakir and M.H. Boduroglu	265
99	Local Buckling, Post-Buckling and Mode Interaction Finite Element Analyses in Cold-Formed Steel Members K. Nagahama, D. Carnotim and E. Batista	235	112	Modeling of the Dynamic Behaviour of Reinforced Concrete Frames with Significant Reinforcement Slip R. Picón, B. Vera, C. Quintero-Febres and J. Flórez-López	267
100	Semi-Rigid Connections Analysis in Plane Frames G.A. Romanholo, R. Bertolino Jr. and R.O. Rodrigues	237	113	Modelling of Accordion Effect in Corrugated Steel Web with Concrete Flanges L. Huang, H. Hikosaka and K. Komine	269
XX	Virtual Experiments on Steel Structures	239	114	Analytical Investigations of the Effects of Tension Slab Reinforcement in Cantilever Beams M.B.H. Esmara	271
101	Virtual Fabrication of Steel Welded Plate Girders J. Néző, B.H.V. Topping and L. Dunai	241			

