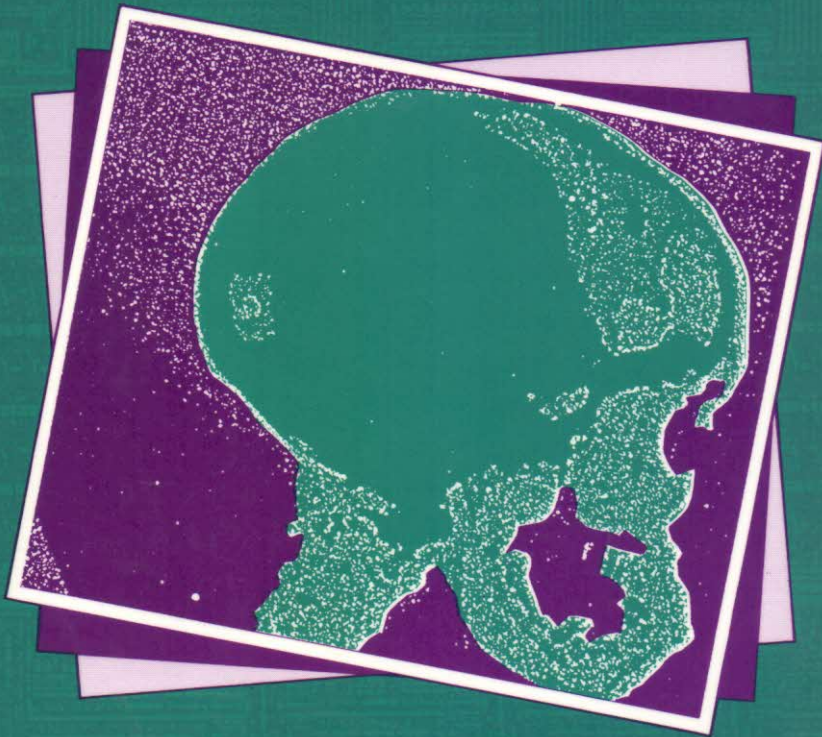


*Introductory*  
*Computer Vision*  
*and*  
*Image Processing*



*Adrian Low*

# CONTENTS

---

|                             |             |
|-----------------------------|-------------|
| <b>Author's note</b>        | <b>xiii</b> |
| <b>Acknowledgements</b>     | <b>xiv</b>  |
| <b>1 Introduction</b>       | <b>1</b>    |
| <b>2 The image model</b>    | <b>7</b>    |
| 2.1 Introduction            | 7           |
| 2.2 Image shape             | 7           |
| 2.3 Sampling                | 12          |
| 2.4 The human vision system | 13          |
| 2.5 Exercises               | 16          |
| <b>3 Image acquisition</b>  | <b>17</b>   |
| 3.1 Introduction            | 17          |
| 3.2 Intensity images        | 17          |
| 3.3 Real-time capture       | 18          |
| 3.4 Colour images           | 19          |
| 3.5 Range images            | 19          |
| 3.6 The video camera        | 19          |
| 3.7 Capture                 | 21          |
| 3.8 Scanners                | 22          |
| 3.9 Satellite imagery       | 24          |
| 3.10 Ranging devices        | 25          |

|          |  |            |
|----------|--|------------|
| 3.11     | Calibration                                    | 29         |
| 3.12     | Exercises                                      | 30         |
| <b>4</b> | <b>Image presentation</b>                      | <b>31</b>  |
| 4.1      | Introduction                                   | 31         |
| 4.2      | Raster screen                                  | 31         |
| 4.3      | Printers                                       | 34         |
| 4.4      | Photography                                    | 46         |
| 4.5      | Three-dimensional imaging                      | 46         |
| 4.6      | Using colour to enhance monochrome output      | 47         |
| 4.7      | Image processors                               | 50         |
| 4.8      | Exercises                                      | 50         |
| <b>5</b> | <b>Statistical operations</b>                  | <b>51</b>  |
| 5.1      | Introduction                                   | 51         |
| 5.2      | Grey-level transformations                     | 52         |
| 5.3      | Histogram equalization                         | 59         |
| 5.4      | Multi-image operations                         | 62         |
| 5.5      | Exercises                                      | 66         |
| <b>6</b> | <b>Spatial operations and transformations</b>  | <b>67</b>  |
| 6.1      | Introduction                                   | 67         |
| 6.2      | Spatially dependent transformations            | 67         |
| 6.3      | Templates and convolution                      | 68         |
| 6.4      | Other window operations                        | 74         |
| 6.5      | Two-dimensional geometric transformations      | 80         |
| 6.6      | Exercises                                      | 83         |
| <b>7</b> | <b>Segmentation and edge detection</b>         | <b>84</b>  |
| 7.1      | Introduction                                   | 84         |
| 7.2      | Region operations                              | 84         |
| 7.3      | Basic edge detection                           | 88         |
| 7.4      | Second-order edge detection                    | 90         |
| 7.5      | Pyramid edge detection                         | 94         |
| 7.6      | Crack edge detection                           | 95         |
| 7.7      | Edge following                                 | 97         |
| 7.8      | Exercises                                      | 99         |
| <b>8</b> | <b>Morphological and other area operations</b> | <b>100</b> |
| 8.1      | Introduction                                   | 100        |
| 8.2      | Basic morphological operations                 | 101        |
| 8.3      | Opening and closing operations                 | 106        |
| 8.4      | Area operations                                | 110        |
| 8.5      | Exercises                                      | 114        |
| <b>9</b> | <b>Finding basic shapes</b>                    | <b>116</b> |

|           |  |            |
|-----------|--|------------|
| 9.1       | Introduction                                       | 116        |
| 9.2       | Combining edges                                    | 116        |
| 9.3       | Hough transforms                                   | 117        |
| 9.4       | Bresenham's algorithms                             | 124        |
| 9.5       | Using interest points                              | 126        |
| 9.6       | Exercises  | 129        |
| <b>10</b> | <b>Labelling lines and regions</b>                 | <b>130</b> |
| 10.1      | Introduction                                       | 130        |
| 10.2      | Flat-surface and straight-line labelling           | 131        |
| 10.3      | Dealing with curves                                | 134        |
| 10.4      | Labelling regions                                  | 134        |
| 10.5      | Exercises  | 138        |
| <b>11</b> | <b>Reasoning, facts, and inferences</b>            | <b>140</b> |
| 11.1      | Introduction                                       | 140        |
| 11.2      | Facts and rules                                    | 141        |
| 11.3      | Strategic learning                                 | 147        |
| 11.4      | Networks as spatial descriptors                    | 149        |
| 11.5      | Rule orders  | 150        |
| 11.6      | Exercises  | 150        |
| <b>12</b> | <b>Pattern recognition and training</b>            | <b>151</b> |
| 12.1      | Introduction                                       | 151        |
| 12.2      | The general problem                                | 151        |
| 12.3      | Approaches to the decision-making process          | 152        |
| 12.4      | Decision functions                                 | 153        |
| 12.5      | Determining the decision functions                 | 155        |
| 12.6      | Non-linear decision functions                      | 156        |
| 12.7      | Using the cluster means                            | 156        |
| 12.8      | Supervised and unsupervised learning               | 158        |
| 12.9      | Optical character recognition (English script)     | 162        |
| 12.10     | Exercises  | 164        |
| <b>13</b> | <b>The frequency domain</b>                        | <b>165</b> |
| 13.1      | Introduction                                       | 165        |
| 13.2      | The frequency domain                               | 167        |
| 13.3      | In the image                                       | 168        |
| 13.4      | The Hartley transform                              | 169        |
| 13.5      | The Fourier transform                              | 175        |
| 13.6      | Optical transformation                             | 176        |
| 13.7      | Power and autocorrelation functions                | 177        |
| 13.8      | Interpretation of the power function               | 177        |
| 13.9      | Exercise   | 180        |
| <b>14</b> | <b>Applications of frequency domain processing</b> | <b>181</b> |
| 14.1      | Introduction                                       | 181        |

|           |   |            |
|-----------|---|------------|
| 14.2      | Convolution in the frequency domain                               | 181        |
| 14.3      | Practical points about correlating images in the frequency domain | 181        |
| 14.4      | Measuring convolution operations                                  | 187        |
| 14.5      | Deconvolution   | 187        |
| 14.6      | Conclusion  | 189        |
| <b>15</b> | <b>Image compression</b>  | <b>190</b> |
| 15.1      | Introduction  | 190        |
| 15.2      | Types and requirements  | 191        |
| 15.3      | Statistical compression   | 191        |
| 15.4      | Spatial compression   | 194        |
| 15.5      | Contour coding  | 195        |
| 15.6      | Changing the domain   | 197        |
| 15.7      | Quantizing compression  | 198        |
| 15.8      | Fractal compression   | 200        |
| 15.9      | Real-time image transmission                                      | 200        |
| 15.10     | Quadrees  | 202        |
| 15.11     | Image standards   | 203        |
| 15.12     | Exercises   | 203        |
| <b>16</b> | <b>Texture</b>  | <b>205</b> |
| 16.1      | Introduction  | 205        |
| 16.2      | Identifying textures  | 206        |
| 16.3      | Using SGLDMs  | 209        |
| 16.4      | Texture gradient  | 213        |
| 16.5      | Texture segmentation  | 213        |
| 16.6      | Exercises   | 214        |
| <b>17</b> | <b>Other topics</b>   | <b>215</b> |
| 17.1      | Introduction  | 215        |
| 17.2      | Tomography and image reconstruction                               | 215        |
| 17.3      | Moving images   | 219        |
| 17.4      | Stereoscopic image processing                                     | 223        |
| 17.5      | Exercises   | 225        |
| <b>18</b> | <b>Applications</b>   | <b>226</b> |
| 18.1      | Introduction  | 226        |
| 18.2      | Some application sketches   | 227        |
| 18.3      | Optical recognition of Chinese characters                         | 230        |
| 18.4      | Finally   | 233        |
|           | <b>Glossary</b>   | <b>234</b> |
|           | <b>Bibliography</b>   | <b>237</b> |
|           | <b>Index</b>  | <b>240</b> |

**Techniques**

|     |   |     |
|-----|---|-----|
| 3.1 | World-to-camera transformation                                    | 29  |
| 4.1 | Setting up a pattern for grey-level rendition on bilevel displays | 39  |
| 4.2 | Regular dither  | 42  |
| 4.3 | The Floyd–Steinberg error-propagating dither                      | 44  |
| 5.1 | Global alterations in brightness                                  | 52  |
| 5.2 | Thresholding  | 53  |
| 5.3 | Bunching  | 54  |
| 5.4 | Splitting   | 56  |
| 5.5 | Automatic selection of grey-level for splitting                   | 57  |
| 5.6 | General grey-level transformations                                | 58  |
| 5.7 | Histogram equalization  | 59  |
| 5.8 | Background subtraction  | 62  |
| 5.9 | Recursive filtering   | 65  |
| 6.1 | Gradation removal by averaging                                    | 68  |
| 6.2 | Masking   | 68  |
| 6.3 | Convolution   | 68  |
| 6.4 | Median filtering  | 75  |
| 6.5 | <i>k</i> -closest averaging                                       | 75  |
| 6.6 | Moravec operator  | 78  |
| 6.7 | Correlation   | 80  |
| 6.8 | Two-dimensional geometric transformations                         | 83  |
| 7.1 | Crude region detection  | 85  |
| 7.2 | Region merging  | 85  |
| 7.3 | Region splitting  | 87  |
| 7.4 | Sobel edge detection  | 89  |
| 7.5 | Pyramid edge detection  | 94  |
| 7.6 | Crack edge relaxation   | 95  |
| 7.7 | Simple edge following   | 97  |
| 8.1 | Dilation (Minkowski addition)                                     | 102 |
| 8.2 | Erosion (Minkowski subtraction)                                   | 103 |
| 8.3 | Grey-level erosion and dilation                                   | 104 |
| 8.4 | Opening and closing operations                                    | 106 |
| 8.5 | Skeleton operations   | 108 |
| 8.6 | Granule sizing and granule counting                               | 108 |
| 8.7 | Row search fill and count   | 113 |
| 8.8 | Granule counting (2)  | 114 |
| 8.9 | Granule counting given edges only                                 | 114 |
| 9.1 | Real straight-edge discovery using the Hough transform            | 119 |
| 9.2 | Real circle discovery using the Hough transform                   | 121 |

|      |   |     |
|------|---|-----|
| 9.3  | The generalized Hough transform                             | 123 |
| 9.4  | Bresenham's straight-line drawing algorithm                 | 124 |
| 9.5  | Bresenham's circle drawing algorithm                        | 125 |
| 10.1 | Finding vertices from Hough transform results               | 131 |
| 10.2 | Labelling the vertices                                      | 132 |
| 10.3 | Classification of regions by relaxation labelling           | 135 |
| 10.4 | Heuristic for search reduction                              | 137 |
| 11.1 | Constructing a set of facts                                 | 144 |
| 11.2 | Constructing a rule base                                    | 145 |
| 12.1 | Automatic clustering (the <i>K</i> -means algorithm)        | 156 |
| 12.2 | Bayesian maximum likelihood supervised classification       | 159 |
| 12.3 | Isolation of a character in an OCR document                 | 162 |
| 12.4 | Creating the pattern vector                                 | 163 |
| 13.1 | The discrete Hartley transform                              | 169 |
| 13.2 | Bit reversal  | 172 |
| 13.3 | Fast Hartley transforms                                     | 172 |
| 14.1 | Convolution using the Fourier transform                     | 184 |
| 14.2 | Hartley convolution   | 185 |
| 15.1 | The Huffman code  | 192 |
| 15.2 | Run length encoding   | 194 |
| 15.3 | Compression using the frequency domain                      | 198 |
| 15.4 | Quantizing compression                                      | 198 |
| 15.5 | Block matching for motion prediction                        | 202 |
| 16.1 | Frequency space analysis of texture                         | 206 |
| 16.2 | Spatial grey-level dependence matrices                      | 207 |
| 16.3 | $2 \times 2$ contingency table analysis                     | 207 |
| 16.4 | Directional autocorrelations to determine periodicity       | 210 |
| 16.5 | Identification of surface rotation and orientation          | 213 |
| 16.6 | Automated texture type identification                       | 213 |
| 16.7 | Automated texture segmentation                              | 213 |
| 17.1 | Reconstruction using the summation method (back projection) | 216 |
| 17.2 | Restricting the range-of-search                             | 220 |
| 17.3 | Finding distance using movement                             | 222 |