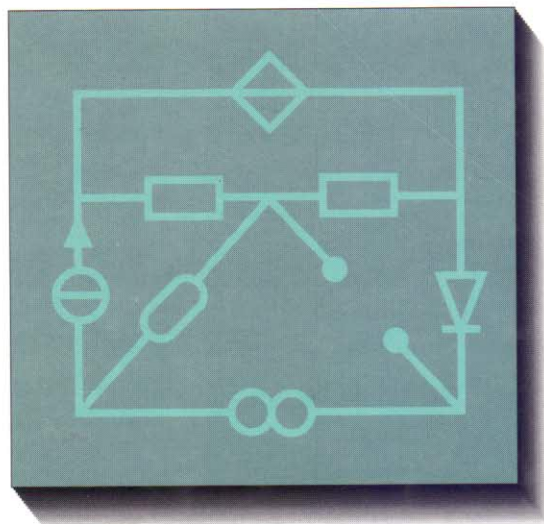


# NON-LINEAR CIRCUITS

*Qualitative Analysis of Non-linear,  
Non-reciprocal Circuits*



MARC FOSSÉPREZ



**WILEY**

*Publishers Since 1807*

---

# CONTENTS

---

FOREWORD	vii
TRANSLATOR'S NOTE	xi
<b>1 INTRODUCTION</b>	<b>1</b>
1.1 Presentation of the subject	1
1.2 The present state of the subject and aims of the book	2
<b>2 LINEAR RESISTIVE CIRCUITS: EXISTENCE AND UNIQUENESS OF THE SOLUTION</b>	<b>6</b>
2.1 Introduction	6
2.2 Always ill-posed structures	9
2.3 Always well-posed structures	17
2.4 Extension to structures with transformers and gyrators	28
<b>3 NON-LINEAR RESISTIVE CIRCUITS WITH A STRUCTURALLY UNIQUE SOLUTION OR SEVERAL SOLUTIONS</b>	<b>35</b>
3.1 Previous results	35
3.2 Existence and uniqueness of the solution	39
3.3 Resistive circuits with several solutions	57
<b>4 PIECEWISE-LINEAR RESISTIVE CIRCUITS WITH UPPER BOUNDS ON THE NUMBER OF SOLUTIONS</b>	<b>63</b>
4.1 Introduction	63
4.2 Admissible diode states	65
4.3 Compatible diode states	74
4.4 Neighbouring diode states	78
<b>5 SOMETIMES ILL-POSED LINEAR RESISTIVE STRUCTURES</b>	<b>84</b>
5.1 Properties of sometimes ill-posed structures	84
5.2 Minimal sometimes ill-posed structures	89
5.3 Applications	101

<b>6</b>	<b>NON-LINEAR DYNAMIC CIRCUITS: TOPOLOGICAL CRITERIA FOR BEHAVIOUR</b>	<b>114</b>
6.1	Introduction	114
6.2	Application of criteria relating to resistive circuits	115
6.3	Lyapunov's method	120
6.4	Passivity and Lyapunov functions	125
<b>7</b>	<b>ALGORITHMS FOR CHECKING CRITERIA</b>	<b>142</b>
7.1	Topological criteria and complexity	142
7.2	Search for a pair of conjugate trees	147
7.3	Search for a pair of compatible ( $i$ , $v$ ) orientations	153
7.4	Implementation	164
<b>8</b>	<b>CONCLUSION</b>	<b>166</b>
8.1	Original results	166
8.2	Future developments and open questions	169
	REFERENCES	170
	INDEX	174