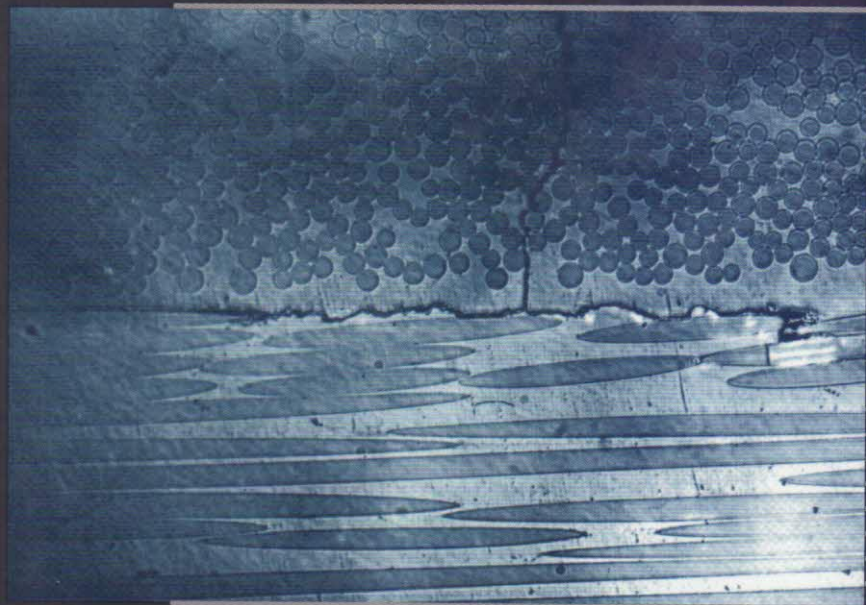


# ANALYSIS AND PERFORMANCE OF FIBER COMPOSITES

Second Edition



Bhagwan D. Agarwal  
Lawrence J. Broutman

---

# CONTENTS

---

FOREWORD	xv
PREFACE	xvii
<b>1 INTRODUCTION</b>	<b>1</b>
1.1 Definition / 1	
1.2 Characteristics / 2	
1.3 Classification / 3	
1.4 Particulate Composites / 5	
1.5 Fibrous Composites / 7	
1.6 Applications of Polymer Matrix Fibrous Composites / 11	
Exercise Problems / 12	
<b>2 FIBERS, MATRICES, AND FABRICATION OF COMPOSITES</b>	<b>13</b>
2.1 Advanced Fibers / 13	
2.1.1 Glass Fibers / 13	
2.1.1.1 <i>Production of Glass Fibers</i> / 14	
2.1.1.2 <i>Glass Composition and Properties</i> / 15	
2.1.1.3 <i>Surface Treatment of Fibers: Sizes and Coupling Agents</i> / 15	
2.1.1.4 <i>Forms of Glass Fiber</i> / 18	

- 2.1.2 Carbon and Graphite Fibers / 21
- 2.1.3 Aramid Fibers / 23
- 2.1.4 Boron Fibers / 24
- 2.1.5 Other Fibers / 24
  
- 2.2 Matrix Materials / 26
  - 2.2.1 Polymers / 26
    - 2.2.1.1 *Thermosetting and Thermoplastic Polymers* / 26
    - 2.2.1.2 *Polymer Properties of Importance to the Composite* / 26
    - 2.2.1.3 *Common Polymeric Matrix Materials* / 30
  - 2.2.2 Metals / 35
  
- 2.3 Fabrication of Composites / 36
  - 2.3.1 Fabrication of Thermosetting Resin Matrix Composites / 36
    - 2.3.1.1 *Hand Lay-up Technique* / 37
    - 2.3.1.2 *Bag Molding Processes* / 40
    - 2.3.1.3 *Filament Winding* / 42
    - 2.3.1.4 *Pultrusion* / 44
    - 2.3.1.5 *Preformed Molding Compounds* / 45
  - 2.3.2 Fabrication of Thermoplastic-Resin Matrix Composites (Short-Fiber Composites) / 48
  - 2.3.3 Fabrication of Metal Matrix Composites / 50
  - 2.3.4 Fabrication of Ceramic Matrix Composites / 52
  - 2.3.5 Carbon-Carbon Composites / 52
  
- Suggested Reading / 53

**3 BEHAVIOR OF UNIDIRECTIONAL COMPOSITES 54**

- 3.1 Introduction / 54
  - 3.1.1 Nomenclature / 54
  - 3.1.2 Volume and Weight Fractions / 56
  
- 3.2 Longitudinal Strength and Stiffness / 59
  - 3.2.1 Initial Behavior / 59
  - 3.2.2 Behavior beyond Initial Deformation / 65
  - 3.2.3 Failure Mechanism and Strength / 66
  - 3.2.4 Factors Influencing Longitudinal Strength and Stiffness / 68

- 3.3 Transverse Stiffness and Strength / 72
  - 3.3.1 Constant-Stress Model / 72
  - 3.3.2 Elasticity Methods of Stiffness Prediction / 74
  - 3.3.3 Halpin-Tsai Equations for Transverse Modulus / 76
  - 3.3.4 Transverse Strength / 78
    - 3.3.4.1 *Micromechanics of Transverse Failure* / 79
    - 3.3.4.2 *Prediction of Transverse Strength* / 81
- 3.4 Prediction of Shear Modulus / 82
- 3.5 Prediction of Poisson's Ratio / 85
- 3.6 Failure Modes / 87
  - 3.6.1 Failure under Longitudinal Tensile Loads / 90
  - 3.6.2 Failure under Longitudinal Compressive Loads / 92
  - 3.6.3 Failure under Transverse Tensile Loads / 96
  - 3.6.4 Failure under Transverse Compressive Loads / 99
  - 3.6.5 Failure under In-Plane Shear Loads / 99
- 3.7 Expansion Coefficients and Transport Properties / 101
  - 3.7.1 Thermal Expansion Coefficients / 101
  - 3.7.2 Moisture Expansion Coefficients / 104
  - 3.7.3 Transport Properties / 105
  - 3.7.4 Mass Diffusion / 106
- 3.8 Typical Unidirectional Fiber Composite Properties / 112
- Exercise Problems / 113
- References / 117

## 4 SHORT-FIBER COMPOSITES 121

- 4.1 Introduction / 121
- 4.2 Theories of Stress Transfer / 122
  - 4.2.1 Approximate Analysis of Stress Transfer / 122
  - 4.2.2 Stress Distributions from Finite-Element Analysis / 125
  - 4.2.3 Average Fiber Stress / 128
- 4.3 Modulus and Strength of Short-Fiber Composites / 129
  - 4.3.1 Prediction of Modulus / 129
  - 4.3.2 Prediction of Strength / 133
  - 4.3.3 Effects of Matrix Ductility / 136
- 4.4 Ribbon-Reinforced Composites / 140
- Exercise Problems / 142
- References / 144

<b>5</b>	<b>ANALYSIS OF AN ORTHOTROPIC LAMINA</b>	<b>146</b>
5.1	Introduction / 146	
5.2	Hooke's Law for Orthotropic Materials / 148	
5.3	Stress-Strain Relations and Engineering Constants / 155	
5.3.1	Specially Orthotropic Lamina / 155	
5.3.2	Relations between Engineering Constants and Elements of Stiffness and Compliance Matrices / 157	
5.3.3	Restrictions on Elastic Constants / 159	
5.3.4	Stress-Strain Relations for Generally Orthotropic Lamina / 161	
5.3.5	Transformation of Engineering Constants / 166	
5.4	Strengths of an Orthotropic Lamina / 174	
5.4.1	Maximum Stress Theory / 175	
5.4.2	Maximum Strain Theory / 177	
5.4.3	Maximum Work Theory / 178	
5.4.4	Importance of Sign of Shear Stress on Strength of Composites / 181	
	Exercise Problems / 184	
	References / 186	
<b>6</b>	<b>ANALYSIS OF LAMINATED COMPOSITES</b>	<b>187</b>
6.1	Introduction / 187	
6.2	Strain and Stress Variation in a Laminate / 187	
6.3	Synthesis of Stiffness Matrix / 190	
6.4	Construction and Properties of Special Laminates / 197	
6.4.1	Symmetric Laminates / 197	
6.4.2	Unidirectional, Cross-Ply, and Angle-Ply Laminates / 198	
6.4.3	Quasiisotropic Laminates / 199	
6.5	Determination of Laminae Stresses and Strains / 206	
6.6	Analysis of Laminates after Initial Failure / 214	
6.7	Laminate Analysis through Computers / 228	
6.8	Hygrothermal Stresses in Laminates / 232	
	Exercise Problems / 240	
	References / 244	
<b>7</b>	<b>ADVANCED TOPICS IN FIBER COMPOSITES</b>	<b>245</b>
7.1	Interlaminar Stresses and Free-Edge Effects / 245	

- 7.2 Fracture Mechanics of Fiber Composites / 251
  - 7.2.1 Fracture Mechanics Concepts / 252
    - 7.2.1.1 Strain Energy Release Rate ( $G$ ) / 252
    - 7.2.1.2 Stress Intensity Factor ( $K$ ) / 255
    - 7.2.1.3  $J$ -integral / 258
  - 7.2.2 Experimental Measurement of Fracture Toughness / 259
    - 7.2.2.1 Critical Strain Energy Release Rate ( $G_c$ ) / 259
    - 7.2.2.2 Critical Stress Intensity Factor (or Crack Growth Resistance,  $K_{Rc}$ ) / 261
    - 7.2.2.3 Critical  $J$ -integral ( $J_c$ ) / 267
  - 7.2.3 Fracture Toughness of Composite Laminates / 268
  - 7.2.4 Whitney–Nuismer Failure Criteria for Notched Composites / 271
- 7.3 Considerations in the Design of Joints / 277
  - 7.3.1 Adhesive Bonded Joints / 277
  - 7.3.2 Mechanically Fastened Joints / 279
- Exercise Problems / 281
- References / 282

## 8 PERFORMANCE OF FIBER COMPOSITES: FATIGUE, IMPACT, AND ENVIRONMENTAL EFFECTS

287

- 8.1 Fatigue / 287
  - 8.1.1 Fatigue Damage and Its Influence on Composite Properties / 289
  - 8.1.2 Factors Influencing Fatigue Behavior of Composites / 297
  - 8.1.3 Empirical Relations for Fatigue Damage and Fatigue Life / 304
  - 8.1.4 Fatigue of High-Modulus Fiber-Reinforced Composites / 305
  - 8.1.5 Fatigue of Short-Fiber Composites / 309
- 8.2 Impact / 314
  - 8.2.1 Impact Testing / 314
  - 8.2.2 Effect of Materials and Testing Variables on Impact Properties / 319
  - 8.2.3 Energy-Absorbing Mechanisms and Failure Models / 324
  - 8.2.4 Hybrid Composites and Their Impact Strength / 330
  - 8.2.5 Damage Due to Low-Velocity Impact / 334

8.3 Environmental Interaction Effects / 339

- 8.3.1 Fiber Strength / 339
  - 8.3.1.1 *Features of Stress Corrosion* / 339
  - 8.3.1.2 *Static Fatigue and Stress-Rupture of Fibers* / 340
  - 8.3.1.3 *Stress Corrosion of Glass Fibers and GRP* / 342
- 8.3.2 Matrix Effects / 346
  - 8.3.2.1 *Effect of Temperature and Moisture* / 346
  - 8.3.2.2 *Degradation at Elevated Temperatures* / 350
  - 8.3.2.3 *Stress-Rupture Characteristics at Modest Temperatures* / 352

Exercise Problems / 354

References / 355

9 EXPERIMENTAL CHARACTERIZATION OF COMPOSITES 363

9.1 Introduction / 363

9.2 Uniaxial Tension Test / 364

9.3 Uniaxial Compression Test / 368

9.4 In-Plane Shear Test / 370

- 9.4.1 Torsion Tube Test / 370
- 9.4.2 Iosipescu Shear Test / 371
- 9.4.3  $[\pm 45]_s$  Coupon Test / 374
- 9.4.4 Off-Axis Coupon Test / 375
- 9.4.5 Other Tests / 376

9.5 Uniaxial Bending (Flexural) Tests / 378

9.6 Determination of Interlaminar Shear Strength and Fracture Toughness / 381

9.7 Measurement of Thermal Expansion Coefficients / 385

9.8 Measurement of Diffusivity / 385

9.9 Damage Identification Using Nondestructive Evaluation Techniques / 387

- 9.9.1 Ultrasonic Techniques / 387
- 9.9.2 Acoustic Emission Technique / 389
- 9.9.3 X-Radiography / 391

9.10 General Remarks on Characterization / 392

Exercise Problems / 393

References / 394

APPENDIX 1.	MATRICES AND TENSORS	399
APPENDIX 2.	EQUATIONS OF THEORY OF ELASTICITY	419
APPENDIX 3.	LAMINATE ORIENTATION CODE	430
APPENDIX 4.	PROPERTIES OF FIBER COMPOSITES	436
APPENDIX 5.	COMPUTER PROGRAMS FOR LAMINATE ANALYSIS	440
INDEX		443