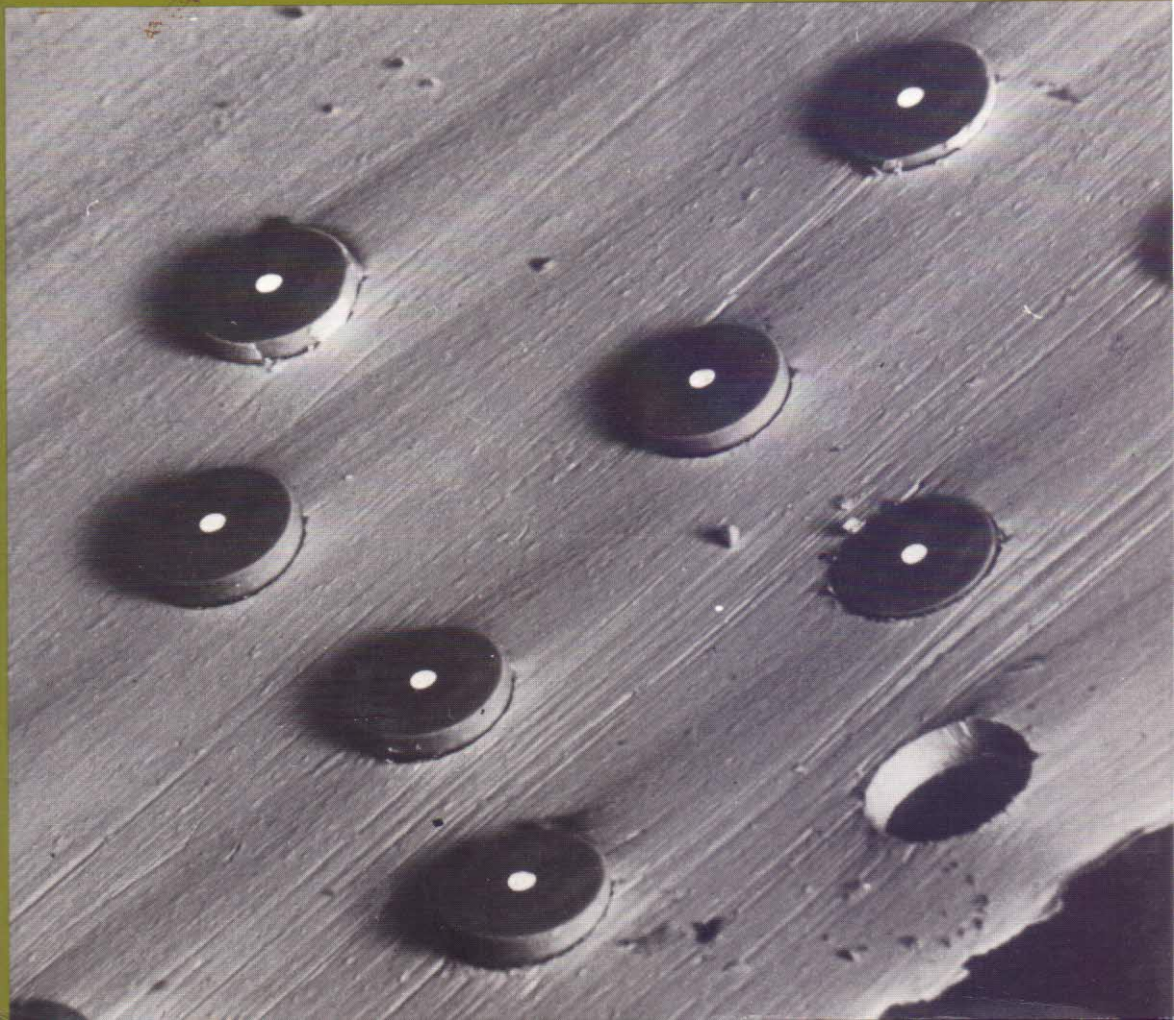


Cambridge  
Solid State  
Science Series

T. W. Clyne  
P. J. Withers

**An Introduction to  
Metal Matrix  
Composites**



# Contents

	<i>Page</i>
<i>Preface</i>	xv
1 General introduction	1
1.1 Types of MMC and general microstructural features	1
1.2 Historical background	3
1.3 Interactions between constituents and the concept of load transfer	7
References	10
2 Basic composite mechanics	12
2.1 The slab model	12
2.1.1 Axial stiffness	12
2.1.2 Transverse stiffness	14
2.1.3 Shear moduli	15
2.1.4 Poisson contractions	17
2.2 The shear lag model	20
2.2.1 Stress and strain distributions	20
2.2.2 Transfer of normal stress across fibre ends	24
2.2.3 Composite mechanics	25
2.2.4 Onset of inelastic behaviour	27
2.3 Continuous coaxial cylinder models	30
2.4 Finite difference and finite element models	34
2.4.1 Mathematical basis	35
2.4.2 Mesh generation	36
2.4.3 Tessellation of the modelled domain	38
References	41
3 The Eshelby approach to modelling composites	44
3.1 Misfit stresses	45

3.2	An example of a misfit strain – differential thermal contraction	48
3.3	Internal stresses in loaded composites	51
3.4	The matrix stress field	55
3.5	Modelling non-dilute systems	57
3.6	Composite stiffness	62
3.6.1	Experimental values of Young's moduli	63
3.6.2	Particulate systems	64
3.6.3	Whisker systems	64
3.7	Simple representations of Eshelby's equations	66
3.7.1	The elastic properties of spherical particle systems	67
	References	69
4	Plastic deformation	71
4.1	Onset of yielding: the effect of internal stress	73
4.1.1	A yield criterion for matrix flow	75
4.1.2	Differential thermal contraction stresses	77
4.2	Onset of yielding: the effect of matrix microstructure	84
4.2.1	Dislocation strengthening	84
4.2.2	Strengthening from grain size refinement	85
4.2.3	Orowan and dispersion strengthening	86
4.3	Modelling of bulk plastic flow	86
4.3.1	The potential for internal stress work-hardening	86
4.3.2	Microstructural work-hardening	92
4.4	Internal stress relaxation	94
4.4.1	Energy minimisation: the driving force for relaxation	95
4.4.2	Micromechanisms of relaxation	98
4.5	Reduced internal stress work-hardening	103
4.6	Diffraction studies of plastic deformation in long and short fibre systems	108
	References	112
5	Thermal effects and high temperature behaviour	117
5.1	Thermal stresses and strains	117
5.1.1	Differential thermal contraction stresses	117
5.1.2	Thermal expansivities	120

5.2	Isothermal creep	123
5.2.1	Creep mechanisms and strain rate expressions for metals	123
5.2.2	Creep of dispersion strengthened metals	128
5.2.3	Creep of MMCs	130
5.3	Thermal cycling creep	141
5.3.1	Thermal cycling	142
5.3.2	Loaded thermal cycling	147
5.3.3	Effects of prior thermal cycling on properties	155
	References	158
6	The interfacial region	166
6.1	The significance of interfacial bond strength	166
6.1.1	Interfacial stresses and inelastic processes	167
6.1.2	Critical stress levels	168
6.1.3	Interfacial fracture toughness	169
6.1.4	Composite performance	171
6.2	The characterisation of bond strength	178
6.2.1	Single fibre loading tests	180
6.2.2	Other tests	187
6.3	Interfacial chemistry	190
6.3.1	Thermodynamics and kinetics of interfacial reactions	190
6.3.2	Effect of reaction on mechanical behaviour	194
6.3.3	Reaction transformation strain effects	199
6.4	Fibre coatings	202
6.4.1	Coating techniques	202
6.4.2	Diffusion barrier coatings	205
6.4.3	Wetting promotion coatings	206
6.4.4	Mechanics of coatings	206
	References	209
7	Fracture processes and failure mechanisms	218
7.1	Failure processes in long fibre MMCs	218
7.1.1	Failure of laminae	218
7.1.2	Off-axis loading	225
7.1.3	Failure of laminates	228
7.2	Failure processes in discontinuous MMCs	230
7.2.1	Micro-damage processes	230

7.2.2	Modelling of damage evolution and composite ductility	234
7.2.3	Experimental data on damage evolution and ductility	240
7.3	Fracture toughness and fatigue crack growth in MMCs	242
7.3.1	An introduction to fracture toughness	242
7.3.2	Modelling of the toughness of MMCs	246
7.3.3	Fatigue and sub-critical crack growth in MMCs	251
7.4	Effects of microstructural variables	256
7.4.1	General crack path observations	256
7.4.2	Reinforcement shape	257
7.4.3	Reinforcement size	259
7.4.4	Bond strength	261
7.4.5	Reinforcement distribution	262
7.4.6	Matrix aging	262
7.5	Effects of testing variables	264
7.5.1	Strain rate	264
7.5.2	Temperature	265
7.5.3	Hydrostatic pressure	265
	References	270
8	Transport properties and environmental performance	277
8.1	Thermal and electrical conduction	277
8.1.1	Heat transfer via electrons and phonons	278
8.1.2	Modelling of heat flow in MMCs	278
8.1.3	Interfacial thermal resistance and reaction layers	285
8.1.4	Electrical resistivity	287
8.1.5	Thermal shock resistance	291
8.2	Tribological behaviour	294
8.2.1	Fundamentals of wear	294
8.2.2	Wear of MMCs with hard reinforcement	296
8.2.3	Wear of MMCs with soft reinforcement	301
8.3	Mechanical damping properties	302
8.3.1	The origin and measurement of damping capacity	302
8.3.2	Damping in MMCs	304

8.4	Oxidation and corrosion resistance	308
8.4.1	High temperature surface degradation of MMCs	308
8.4.2	Aqueous corrosion of MMCs	310
	References	313
9	Fabrication processes	318
9.1	Primary liquid phase processing	320
9.1.1	Squeeze casting and squeeze infiltration	322
9.1.2	Spray deposition	334
9.1.3	Slurry casting ('compocasting')	338
9.1.4	Reactive processing (' <i>in situ</i> composites')	344
9.2	Primary solid state processing	346
9.2.1	Powder blending and pressing	346
9.2.2	Diffusion bonding of foils	347
9.2.3	Physical vapour deposition (PVD)	348
9.3	Secondary processing	350
9.3.1	Extrusion and drawing	351
9.3.2	Rolling, forging and hot isostatic pressing	353
9.3.3	Superplastic processing and sheet forming	357
9.4	Machining and joining	357
9.4.1	Mechanical cutting	357
9.4.2	Electrical cutting	358
9.4.3	High energy beam and fluid jet cutting	359
9.4.4	Joining processes	359
	References	360
10	Development of matrix microstructure	370
10.1	Dislocation structure and behaviour	370
10.1.1	The influence of thermal stress on dislocation structure	370
10.1.2	The influence of plastic straining on dislocation structure	374
10.2	Precipitation behaviour	378
10.2.1	Monitoring of aging kinetics	378
10.2.2	Dislocation-nucleated precipitation	379
10.2.3	Vacancy-related precipitation	381
10.2.4	Homogeneously-nucleated precipitation	382
10.2.5	Interfacial precipitation and precipitate-free zones	383

10.3	Grain structure, texture, recovery and recrystallisation	383
10.3.1	Deformation-induced features	383
10.3.2	Recrystallisation	388
	References	396
11	Testing and characterisation techniques	399
11.1	Measurement of Young's modulus	399
11.1.1	Basic principle and capability	399
11.1.2	Application to MMCs	400
	References	406
11.2	Characterisation of plastic strain history	407
11.2.1	Basic principle and capability	407
11.2.2	Application to MMCs	408
	References	416
11.3	Internal stress measurement by diffraction	418
11.3.1	Basic principle and capability	418
11.3.2	Application to MMCs	419
	References	421
11.4	Photoelastic determination of internal stress	422
11.4.1	Basic principle and capability	422
11.4.2	Application to MMCs	426
	References	427
11.5	Metallographic preparation	427
11.5.1	Basic principle and capability	427
11.5.2	Application to MMCs	428
	References	431
11.6	TEM specimen preparation	431
11.6.1	Basic principle and capability	431
11.6.2	Application to MMCs	432
	References	434
11.7	Characterisation of reinforcement parameters	434
11.7.1	Basic principle and capability	434
11.7.2	Inclusion aspect ratio	435
11.7.3	Inclusion orientation	436
11.7.4	Inclusion distribution	438
	References	440
11.8	Archimedean densitometry	441
11.8.1	Basic principle and capability	441
11.8.2	Application to MMCs	442
	References	443

11.9	Thermal and electrical conductivity	443
11.9.1	Basic principle and capability	443
11.9.2	Application to MMCs	445
	References	446
11.10	High temperature extensometry	447
11.10.1	Basic principle and capability	447
	References	449
11.11	Damage event detection by acoustic emission	449
11.11.1	Basic principle and capability	449
11.11.2	Application to MMCs	450
	References	453
12	Applications	454
12.1	Engineering properties of MMCs	454
12.1.1	Stiffness enhancement	454
12.1.2	Strength enhancement	456
12.1.3	Increased creep resistance	456
12.1.4	Increased wear resistance	457
12.1.5	Density reduction	457
12.1.6	Thermal expansion control	458
12.2	Case studies	459
12.2.1	Diesel engine piston	459
12.2.2	Automotive drive shaft	461
12.2.3	Equipment rack	463
12.2.4	Brake rotor disc	463
12.2.5	Bicycle frame	465
12.2.6	Engine cylinder block	467
12.2.7	Boom/waveguide for space telescope	467
12.2.8	Substrate/housing for microelectronics package	469
12.2.9	Aero-engine components	470
	References	471
<i>Appendix I</i>	Nomenclature	474
<i>Appendix II</i>	Matrices and reinforcements – selected thermophysical properties	479
<i>Appendix III</i>	The basic Eshelby <i>S</i> tensors	481
<i>Appendix IV</i>	Listing of a program for an Eshelby calculation	483
<i>Author index</i>		486
<i>Subject index</i>		498