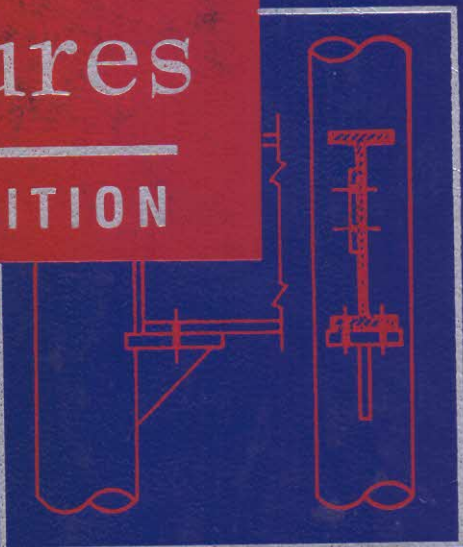
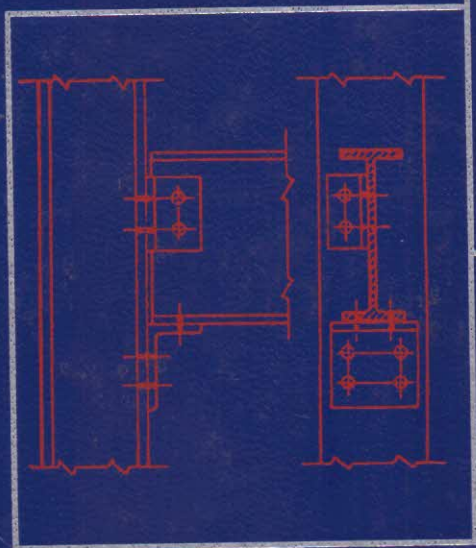


Simplified Design of Steel Structures

SEVENTH EDITION



James Ambrose

PARKER / AMBROSE SERIES OF SIMPLIFIED DESIGN GUIDES



CONTENTS

Preface to the Seventh Edition	xi
Preface to the First Edition	xv
1 Introduction	1
1.1 Use of Steel for Building Structures / 1	
1.2 Methods of Investigation and Design / 2	
1.3 Reference Sources for Design / 4	
1.4 Units of Measurement / 5	
1.5 Computational Accuracy / 8	
1.6 Symbols / 9	
1.7 Nomenclature / 9	
2 What Is Steel?	13
2.1 Unique Structural Nature / 14	
2.2 Industrial Processes / 16	

- 2.3 Rolled Structural Shapes / 18
- 2.4 Cold-Formed Steel Products / 22
- 2.5 Fabricated Structural Components / 24
- 2.6 Development of Structural Systems / 24
- 2.7 Connection Methods / 25
- 2.8 Data for Steel Products / 26

3 What You Should Know About Steel 29

- 3.1 Stress and Strain / 29
- 3.2 Stability / 30
- 3.3 Deformation Limits and Controls / 31
- 3.4 Rust / 32
- 3.5 Fire / 33
- 3.6 Assemblage / 34
- 3.7 Cost / 35

4 Choosing a Structural Systems 37

- 4.1 Deck-Beam-Girder Systems / 37
- 4.2 The Three-Dimensional Frame / 45
- 4.3 Truss Systems / 47
- 4.4 Rigid Frames / 48
- 4.5 Mixed Systems / 49

5 Structural Investigation and Design 51

- 5.1 Investigation of Structural Behavior / 51
- 5.2 Methods of Investigation and Design / 56
- 5.3 Investigation of Columns and Beams / 58
- 5.4 Investigation of Column-and-Beam
Frames / 66
- 5.5 Approximate Investigation of Indeterminate
Structures / 74
- 5.6 Service Load Conditions / 79
- 5.7 Allowable Stress Design (ASD) / 81
- 5.8 Service Conditions Versus Limit
States / 82
- 5.9 Load and Resistance Factor
Design (LRFD) / 83
- 5.10 Choosing a Design Method / 86

6	Horizontal-Span Framing Systems	89
6.1	Rolled Shapes as Beams / 89	
6.2	Bending of Beams / 91	
6.3	Shear in Beams / 104	
6.4	Deflection of Beams / 110	
6.5	Buckling of Beams / 118	
6.6	Safe Load Tables / 125	
6.7	Equivalent Load Techniques / 126	
6.8	Torsional Effects / 127	
6.9	Concentrated Load Effects on Beams / 131	
6.10	Bearing Plates / 135	
6.11	Manufactured Trusses / 139	
6.12	Steel Decks / 146	
6.13	Alternative Decks with Steel Framing / 150	
7	Steel Columns	155
7.1	Introduction / 155	
7.2	Column Forms with Steel Products / 158	
7.3	Lateral Stability of Columns / 159	
7.4	Investigation of Columns / 162	
7.5	Use of Tabulated Safe and Limit Loads / 163	
7.6	Design of Steel Columns / 168	
7.7	Single Rolled Shapes as Columns / 169	
7.8	Steel Pipe Columns / 172	
7.9	Structural Tubing Columns / 174	
7.10	Double-Angles / 174	
7.11	Columns and Bending / 177	
7.12	Column Framing and Connections / 183	
7.13	Column Bases / 185	
8	Framed Bents	191
8.1	Development of Bents / 191	
8.2	Multiunit Rigid Frames / 192	
8.3	Three-Dimensional Frames / 194	
8.4	Mixed Frame and Wall Systems / 196	
8.5	Special Problems of Steel Rigid Frame Bents / 199	
8.6	Trussed Frames / 201	

9	Miscellaneous Steel Components and Systems	207
9.1	Manufactured Systems / 207	
9.2	Composite Structural Elements / 208	
9.3	Tension Elements and Systems / 213	
10	Steel Trusses	229
10.1	General Considerations / 229	
10.2	Bracing for Trusses / 234	
10.3	Loads on Trusses / 236	
10.4	Investigation for Internal Forces in Planar Trusses / 237	
10.5	Design Forces for Truss Members / 254	
10.6	Combined Actions in Truss Members / 254	
10.7	Design Considerations for Steel Trusses / 255	
10.8	Two-Way Trusses / 256	
11	Steel Connections	265
11.1	Basic Considerations / 265	
11.2	Steel Bolts / 268	
11.3	Considerations for Bolted Joints / 276	
11.4	Design of a Bolted Connection / 281	
11.5	Bolted Framing Connections / 288	
11.6	Welding / 296	
11.7	Design of Welded Connections / 302	
11.8	Welded Steel Frames / 306	
11.9	Control Joints: Design for Selected Behavior / 307	
12	Building Structures: Design Examples	313
12.1	General Considerations for Building Structures / 313	
12.2	Design Loads / 315	
12.3	Building One / 327	
12.4	Building Two / 343	

- 12.5 Building Three / 346
- 12.6 Building Four / 378
- 12.7 Building Five / 389
- 12.8 Building Six / 390

APPENDIX A Properties of Shapes 407

APPENDIX B Beam Design Aids 415

Study Aids 423

Terms / 423

Self-Examinations / 427

Answers to Problems 433

Bibliography 437

Index 439